



## **Minipack-torre S.p.A.**

Via Provinciale, 54 - 24044 Dalmine (BG) - Italy

Tel. (035) 563525 – Fax (035) 564945

E-mail: [info@minipack-torre.it](mailto:info@minipack-torre.it)

<http://www.minipack-torre.it>

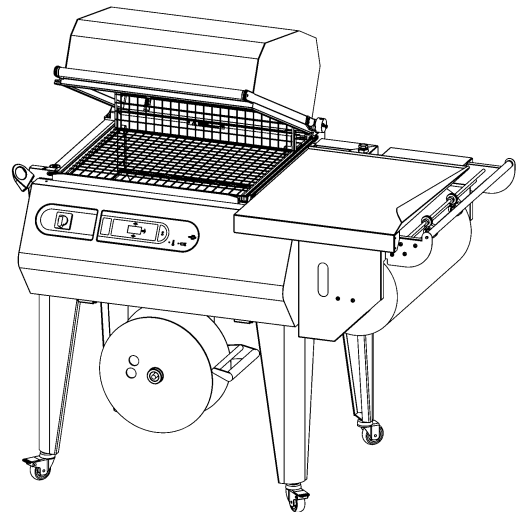
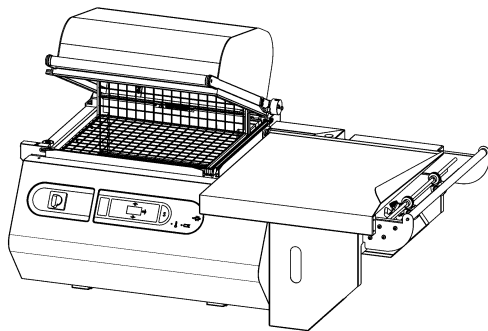


## **Spare parts catalogue**

*( Valid from serial number 104 dated 02.2009 up to serial number 743 dated 03.2010 )*

**mod. RP55 Basic**

**mod. RP55**



**CAREFULLY READ THIS CATALOGUE BEFORE ORDERING ANY SPARE PART**



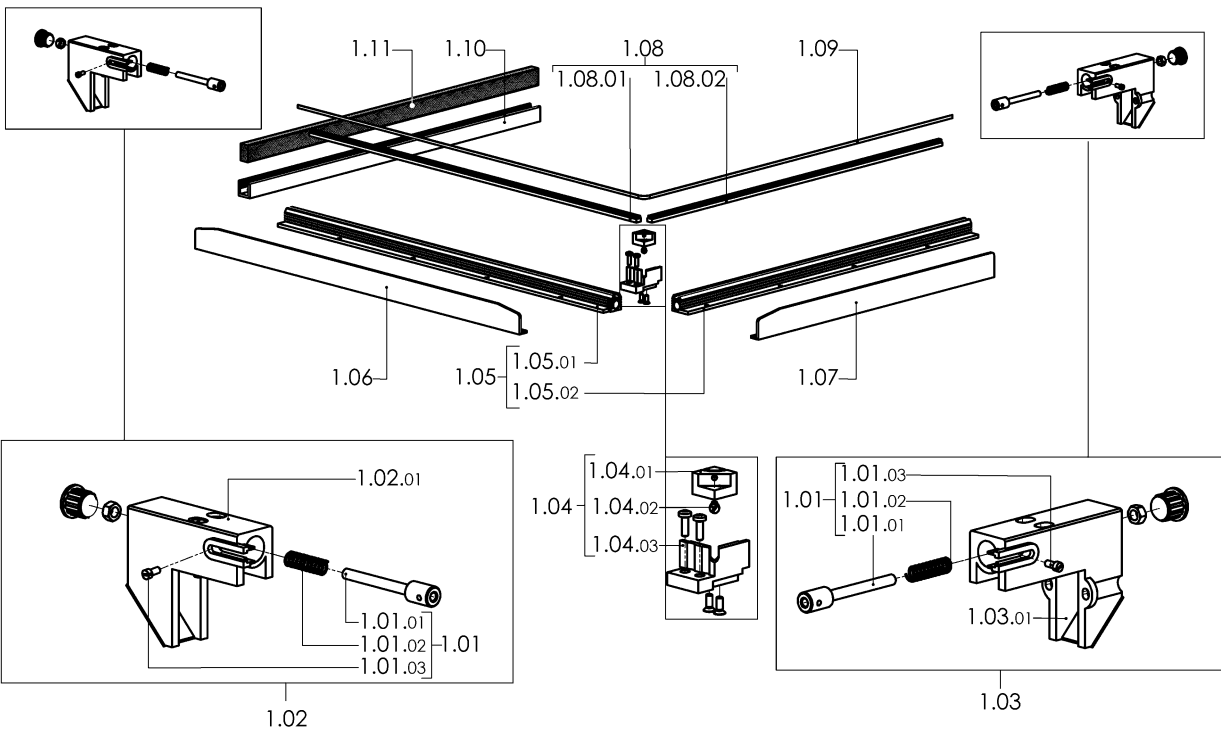
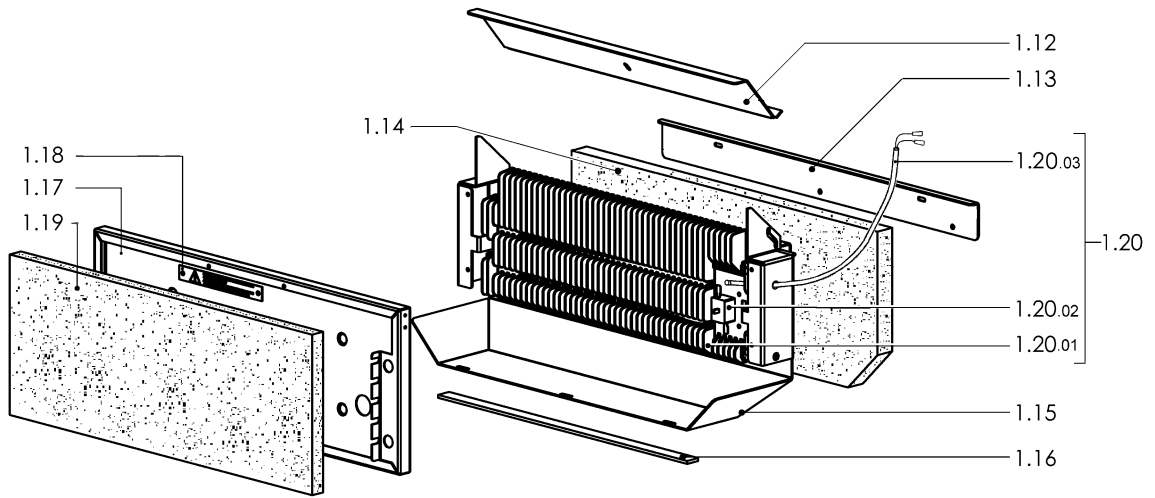
DOC. N. FM112165

REV. 0

Ed: 01.2014

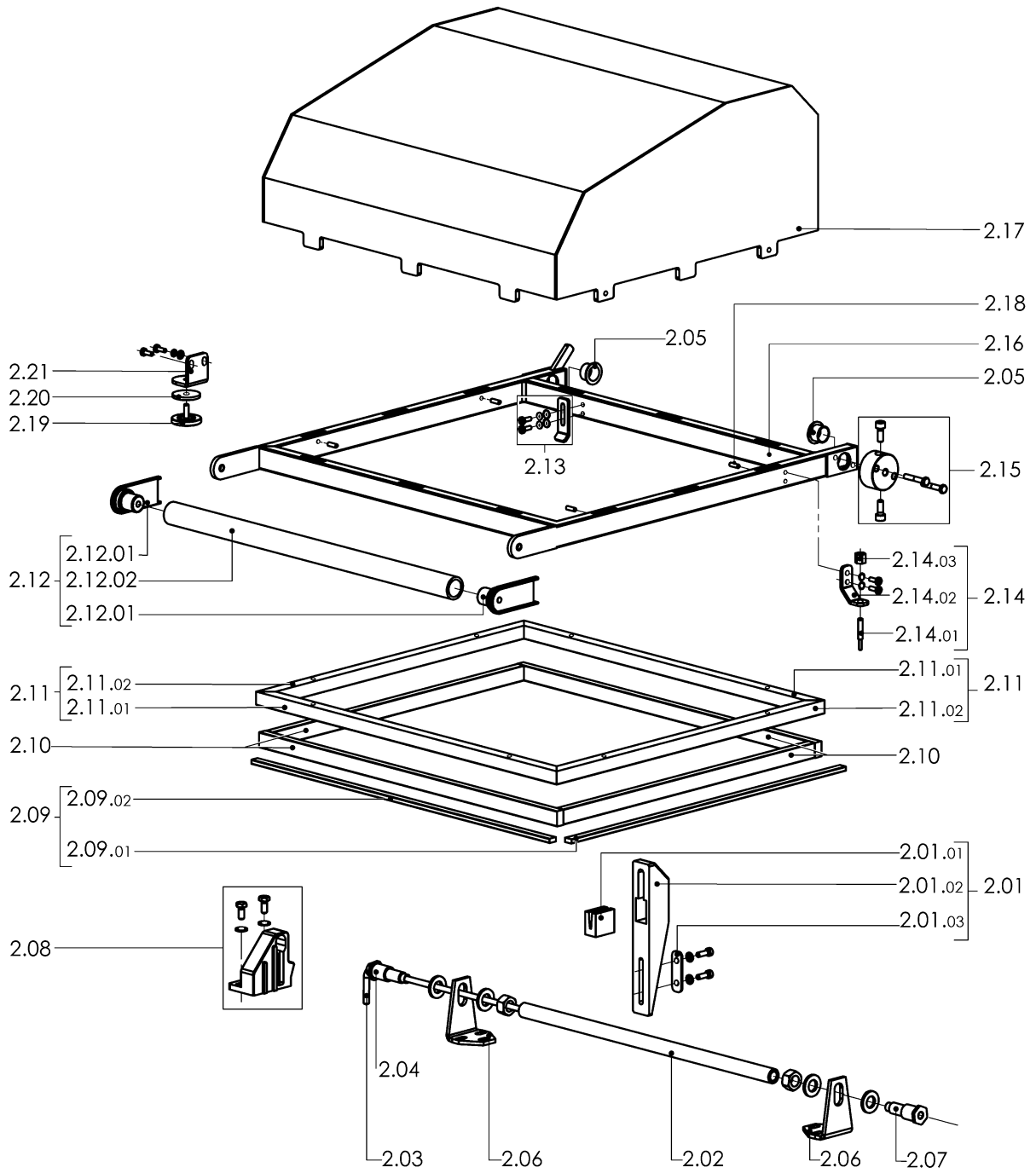
|                          |                 |
|--------------------------|-----------------|
| <b>ITEMS DESCRIPTION</b> | <b>SCHEME 1</b> |
|--------------------------|-----------------|

| <b>Pos.</b> | <b>Code</b> | <b>Description</b>                |
|-------------|-------------|-----------------------------------|
| 1.01        | SOK01112    | Blade tightener clamp kit         |
| 1.01.01     | FM210001    | Blade tightener clamp             |
| 1.01.02     | FM170101    | Spring                            |
| 1.01.03     | FM850703    | M3X8 screw                        |
| 1.02        | SOK00301    | Front clamp kit                   |
| 1.02.01     | FM290300    | Blade tightener front support     |
| 1.01        | SOK01112    | Blade tightener clamp kit         |
| 1.03        | SOK00302    | Rear clamp kit                    |
| 1.03.01     | FM290301    | Blade tightener rear support      |
| 1.01        | SOK01112    | Blade tightener clamp kit         |
| 1.04        | SOK00306    | Blade holder central clamp kit    |
| 1.04.01     | FM180011    | Blade holder central clamp        |
| 1.04.02     | FM850703    | M3X8 screw                        |
| 1.04.03     | FM040058    | Insulating strip                  |
| 1.05        | S02A0306    | Infill holder channel kit         |
| 1.05.01     | FM220112    | Front infill blocks channel       |
| 1.05.02     | FM220122    | Side infill blocks channel        |
| 1.06        | S02A0901    | Front guard kit                   |
| 1.07        | S02A0902    | Side guard kit                    |
| 1.08        | S02A0310    | Infill blocks kit                 |
| 1.08.01     | FM050112    | Front blade support infill blocks |
| 1.08.02     | FM050113    | Side blade support infill blocks  |
| 1.09        | FE385602    | Teflon-coated sealing blade       |
| 1.10        | FM220265    | Lower rubber holder side channel  |
| 1.11        | FM350006    | 15X10 Lg.530 Neoprene rubber      |
| 1.12        | FM281334    | Heating chamber flap              |
| 1.13        | FM091185    | Rear reinforcement                |
| 1.14        | FM195112    | Rock wool panel                   |
| 1.15        | FM091123    | Heaters rear plate                |
| 1.16        | GM590027    | Silicone 3X15 (mt.0,55)           |
| 1.17        | FM091124    | Heaters front plate               |
| 1.18        | FM110552    | High temperature plate            |
| 1.19        | FM195111    | Glass wool panel                  |
| 1.20        | KR320A01    | W2800 V230 Heat sink kit          |
|             | KR320D01    | W2800 V200 Heat sink kit          |
| 1.20.01     | FM390024    | W2800 V230 Heat sink              |
|             | FM390023    | W2800 V200 Heat sink              |
| 1.20.02     | SOK01210    | Safety thermostat                 |
| 1.20.03     | FE435011    | Thermocouple                      |



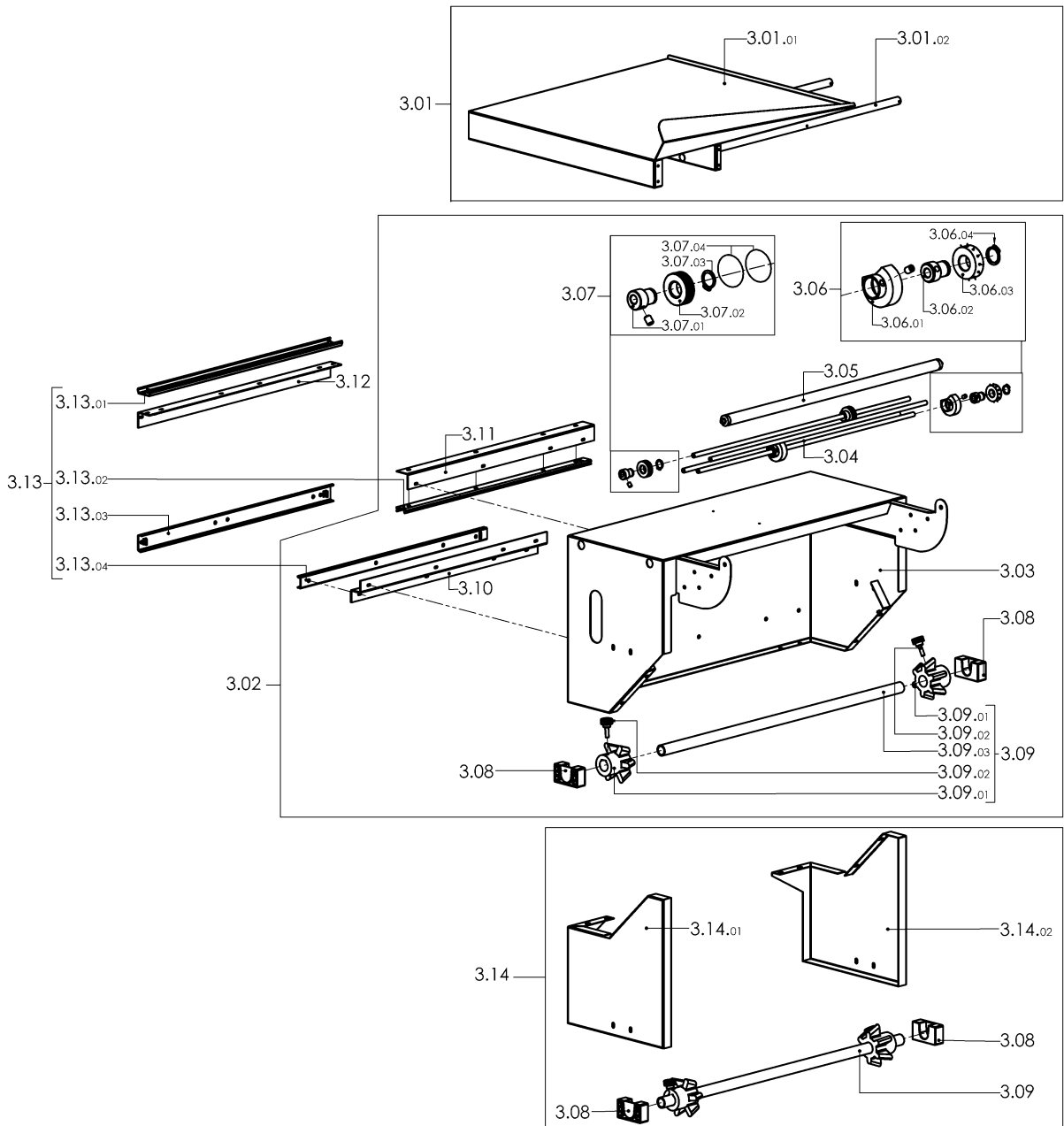
|                          |                 |
|--------------------------|-----------------|
| <b>ITEMS DESCRIPTION</b> | <b>SCHEME 2</b> |
|--------------------------|-----------------|

| <b>Pos.</b> | <b>Code</b> | <b>Description</b>                     |
|-------------|-------------|--|
| 2.01        | GOK00011    | Hood shock absorber kit                |
| 2.01.01     | FM350001    | Shock absorber rubber washer           |
| 2.01.02     | FM290001    | Rubber washer holder bracket           |
| 2.01.03     | FM280304    | Rubber washer holder bracket plate     |
| 2.02        | FM250102    | Torsion bar tube                       |
| 2.03        | FM170002    | Torsion bar                            |
| 2.04        | SOK01005    | Hood rotation left pin kit             |
| 2.05        | FM540007    | Bush                                   |
| 2.06        | FM290101    | Hood support                           |
| 2.07        | SOK01002    | Hood rotation right pin kit            |
| 2.08        | SOK01004    | Torsion bar housing kit                |
| 2.09        | S02A0404    | Teflon kit                             |
| 2.09.01     | FM240003    | Teflon lining L530                     |
| 2.09.02     | FM240004    | Teflon lining L570                     |
| 2.10        | FM350009    | Neoprene rubber 17X10 L.2210mm         |
| 2.11        | KR320053    | Upper rubber holder channels kit       |
| 2.11.01     | FM220263    | Front and rear rubber holder channel   |
| 2.11.02     | FM220264    | Side rubber holder channel             |
| 2.12        | S02A0402    | Handgrip kit for hood                  |
| 2.12.01     | FM340005    | Handgrip bush                          |
| 2.12.02     | FM150003    | Handgrip                               |
| 2.13        | SOK00405    | Heating chamber flap opening lever kit |
| 2.14        | SOK00406    | Microswitch screw kit                  |
| 2.14.01     | FM160224    | Microswitch screw                      |
| 2.14.02     | FM280001    | Microswitch square holder              |
| 2.14.03     | FM160001    | Microswitch lock screw                 |
| 2.15        | SOK01001    | Torsion bar blocking flange kit        |
| 2.16        | FM300099    | Upper hood frame                       |
| 2.17        | FM081028    | Upper hood                             |
| 2.18        | FM852207    | M4X14 screw                            |
| 2.19        | FM160026    | Electromagnet contrast                 |
| 2.20        | FM350011    | Electromagnet contrast washer          |
| 2.21        | FM280011    | Electromagnet contrast square          |




|                          |                 |
|--------------------------|-----------------|
| <b>ITEMS DESCRIPTION</b> | <b>SCHEME 3</b> |
|--------------------------|-----------------|

| <b>Pos.</b> | <b>Code</b> | <b>Description</b>                      |
|-------------|-------------|---|
| 3.01        | PC32B001    | RAL7016B. packaging plate pre-assembly  |
| 3.01.01     | FM091137    | RAL7016B. packaging plate               |
| 3.01.02     | FM300097    | Packaging plate frame                   |
| 3.01.01     | FM091176    | Inox packaging plate (optional)         |
| 3.02        | PB32B001    | RAL7035B. roll support pre-assembly     |
| 3.03        | FM091132    | RAL7035B. roll support                  |
| 3.04        | FM030004    | Microperforator rod                     |
| 3.05        | FM710320    | Idle roll                               |
| 3.06        | S0K00605    | Microperforator with needles kit        |
| 3.06.01     | FM095137    | Carter                                  |
| 3.06.02     | FM340001    | Centred bush                            |
| 3.06.03     | FM160007    | Wheels with needles                     |
| 3.06.04     | FM520005    | Shafts seeger ring                      |
| 3.07        | S0K00607    | Slotted microperforator kit             |
| 3.07.01     | FM340003    | Eccentric bush                          |
| 3.07.02     | FM160010    | Wheel                                   |
| 3.07.03     | FM520005    | Shafts seeger ring                      |
| 3.07.04     | FM650115    | Gasket                                  |
| 3.08        | FM340510    | Support x reel holder roller            |
| 3.09        | S02A0602    | Film roll tube kit                      |
| 3.09.01     | FM340010    | Centering cone                          |
| 3.09.02     | FM510065    | M6X20 handwheel                         |
| 3.09.03     | FM250002    | Reel holder roller                      |
| 3.10        | FM220524    | "Z" shaped channel for male guide       |
| 3.11        | FM220522    | Upper male guide corner                 |
| 3.12        | FM220511    | Female guide corner                     |
| 3.13        | S02A0908    | Coupled guides kit                      |
| 3.13.01     | FM140004    | Female guide L600                       |
| 3.13.02     | FM140122    | Male guide L600                         |
| 3.13.03     | FM140004    | Female guide L600                       |
| 3.13.04     | FM140122    | Male guide L600                         |
| 3.14        | PB32N001    | Second film roll support kit (optional) |
| 3.14.01     | FM090333    | Left second film roll support           |
| 3.14.02     | FM090332    | Right second film roll support          |

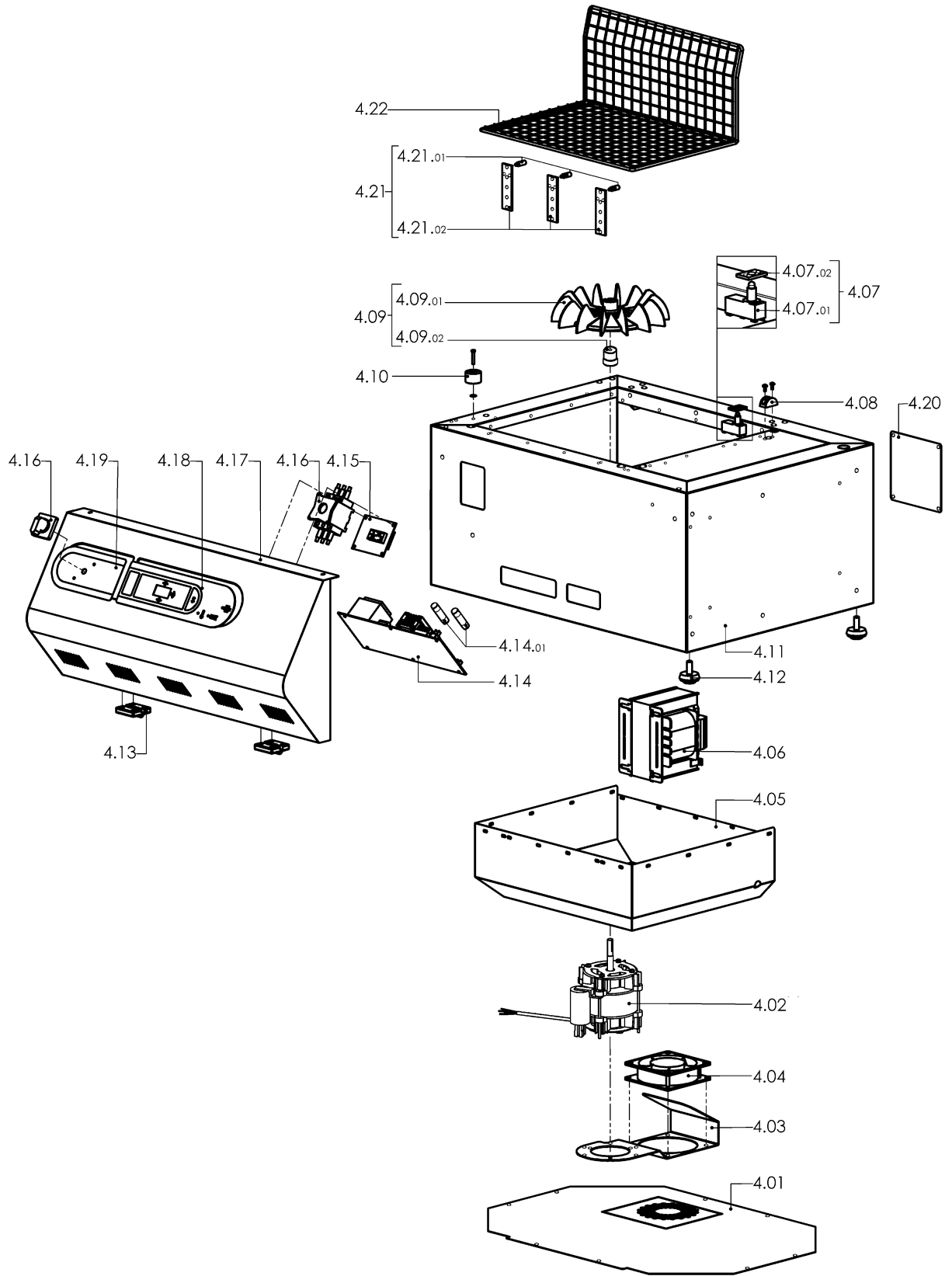


|                          |                 |
|--------------------------|-----------------|
| <b>ITEMS DESCRIPTION</b> | <b>SCHEME 4</b> |
|--------------------------|-----------------|

| <b>Pos.</b> | <b>Code</b>          | <b>Description</b>   |
|-------------|----------------------|--|
| 4.01        | FM090644             | Lower cover (valid from serial number xxx dated xxx)               |
|             | FM090640<br>(old)    | Lower cover (valid up to serial number xxx dated xxx)              |
| 4.02        | FE241057<br>FE240023 | Single-phase motor 230V<br>Single-phase motor 200V                 |
| 4.03        | FM090982             | Ventilator support   |
| 4.04        | FE260020<br>FE260022 | Ventilator 230V<br>Ventilator 200V                                 |
| 4.05        | FM090229             | Lower hood   |
| 4.06        | FE440618             | Transformer 2400VA (200-230V)                                      |
| 4.07        | S0K01208             | Hood microswitch kit   |
| 4.07.01     | FE220137             | Microswitch  |
| 4.07.02     | FM280216             | Microswitch plate  |
| 4.08        | FM230002             | Microswitch guard  |
| 4.09        | S0K01110             | Fan kit  |
| 4.09.01     | FM830003             | Fan  |
| 4.09.02     | FM340009             | Bush   |
| 4.10        | FE130013             | Electromagnet  |
| 4.11        | FM091181             | RAL7035B. fairing  |
| 4.12        | FM330001             | Adjusting foot (for the "RP55 Basic" version only)                 |
| 4.13        | FM510084             | Hinge  |
| 4.14        | FE120264             | Power board 230V (valid from serial number 223 dated 06.2009)      |
|             | FE120254<br>(old)    | Power board kit 230V (valid up to serial number 222 dated 06.2009) |
|             | FE120255             | Power board 200V   |
| 4.14.01     | FE290407             | Fuse 10.3X38 AM 16A (200/230V)                                     |
| 4.15        | FE120263             | Control board (valid from serial number 223 dated 06.2009)         |
|             | FE120253<br>(old)    | Control board kit (valid up to serial number 222 dated 06.2009)    |
| 4.16        | FE080001             | Main switch 20A (200-230V)   |
| 4.17        | FM091128             | RAL7035B. front panel  |
| 4.18        | FE120601             | Membrane keyboard  |
| 4.19        | FM110340             | Push button panel adhesive   |
| 4.20        | FM091148             | RAL7035B. rear panel   |
| 4.21        | S0K01301             | Screened plate front support                                       |
| 4.21.01     | FM200002             | Screened plate adjusting pin                                       |
| 4.21.02     | FM290105             | Screened plate front support                                       |
| 4.22        | FM130002             | Reticulated plate  |

|   |   |
|---|---|
|  | <p>The new power board FE120264 as well as the new control board FE120263 <u>are not interchangeable</u> with the previous boards FE120254 and FE120253.</p> <p>Therefore, if you need a power board for a machine with a serial number prior to the one reported, you must order code FE120254. <u>This way, you will receive a kit composed of the new power board with fuses and the new control board.</u></p> <p>If you need a control board, you must order code FE120253. <u>This way, you will receive the same new kit composed of the new power board with fuses and the new control board.</u></p> |
|---|---|

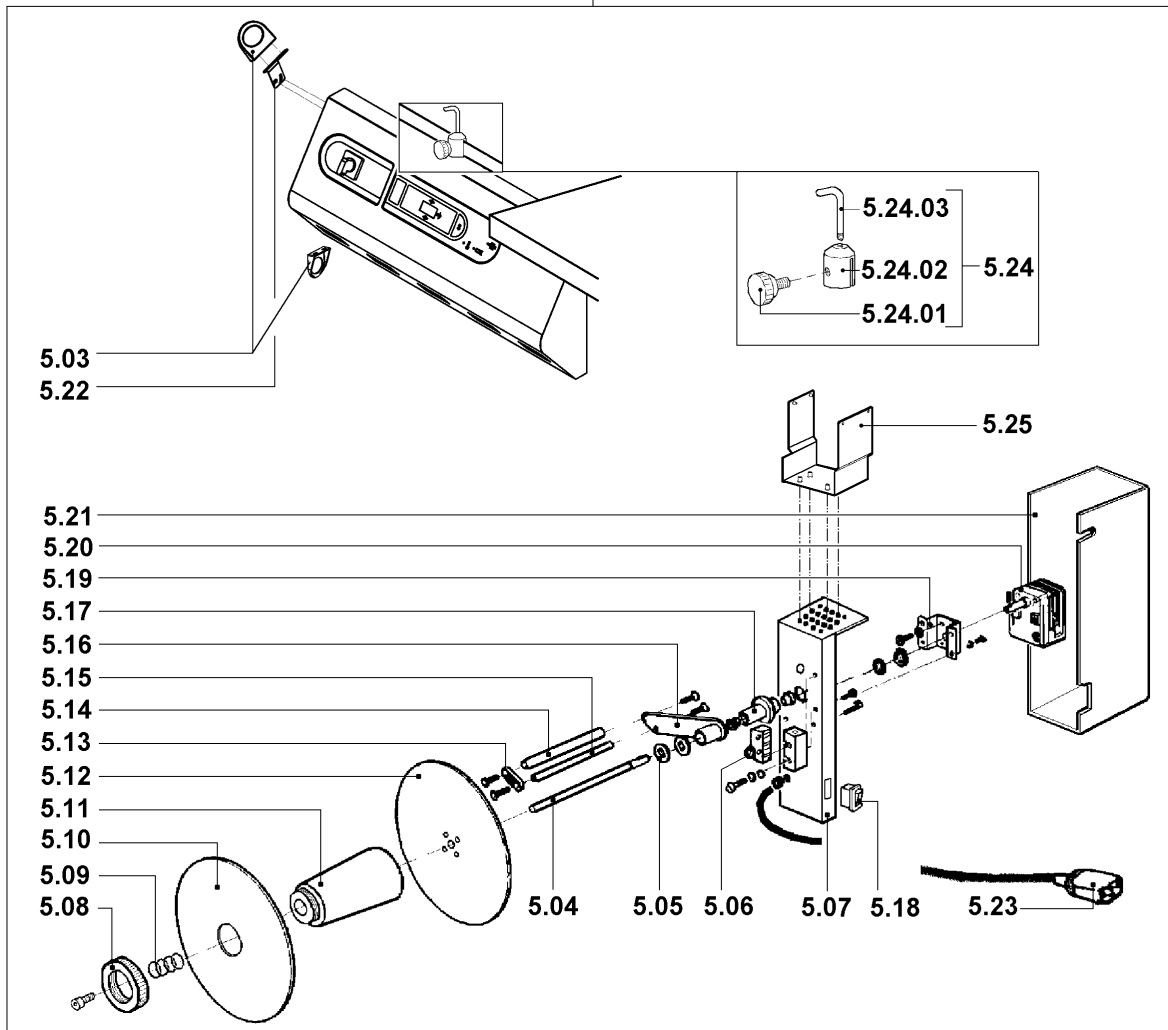




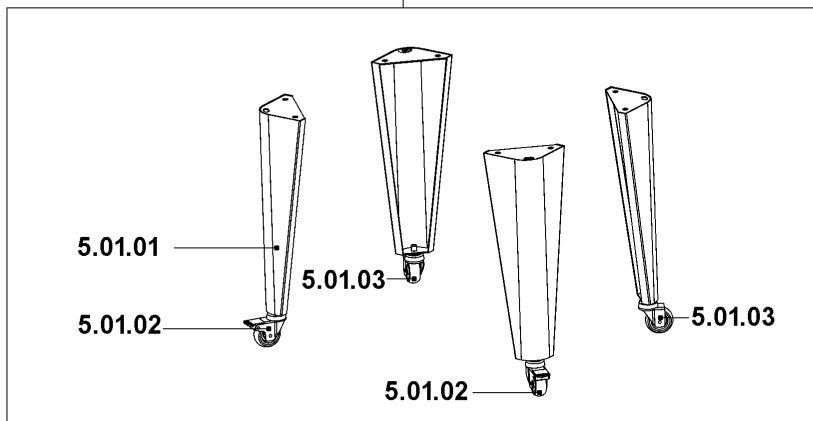
|                          |                 |
|--------------------------|-----------------|
| <b>ITEMS DESCRIPTION</b> | <b>SCHEME 5</b> |
|--------------------------|-----------------|

| <b>Pos.</b> | <b>Code</b> | <b>Description</b>         |
|-------------|-------------|----------------------------|
| 5.01        | GB31B001    | RAL7035B. supports kit     |
| 5.01.01     | FM091036    | RAL7035B. support          |
| 5.01.02     | FM770522    | Wheel Ø80 with brake       |
| 5.01.03     | FM770521    | Wheel Ø80                  |
| 5.02        | AV990A15    | (200-230V) Rewinder group  |
| 5.03        | FM160231    | Film guiding ring          |
| 5.04        | FM010041    | Film rewinder shaft        |
| 5.05        | FM160111    | Washer                     |
| 5.06        | FE220105    | Microswitch                |
| 5.07        | FM290175    | Rewinder support           |
| 5.08        | FM160104    | Ring nut                   |
| 5.09        | FM170161    | Spring                     |
| 5.10        | FM120040    | Movable flange             |
| 5.11        | FM250128    | Hub                        |
| 5.12        | FM120041    | Fixed flange               |
| 5.13        | FM280326    | Plate                      |
| 5.14        | FM250074    | Roller                     |
| 5.15        | FM030063    | Rod                        |
| 5.16        | FM060027    | Lever                      |
| 5.17        | FM290172    | Lever support              |
| 5.18        | FE190032    | Switch                     |
| 5.19        | FM290107    | Gearmotor support          |
| 5.20        | FE250016    | 200-220V gearmotor         |
| 5.21        | FM095138    | Case                       |
| 5.22        | FM290525    | Film guiding ring square   |
| 5.23        | FE310121    | Cable 3X0,75X1000          |
| 5.24        | SOK00407    | Film guide kit             |
| 5.24.01     | FM510035    | Knob                       |
| 5.24.02     | FM180007    | Film guide rod clamp       |
| 5.24.03     | FM030046    | Film guide rod             |
| 5.25        | FM290432    | RAL9005B. rewinder support |

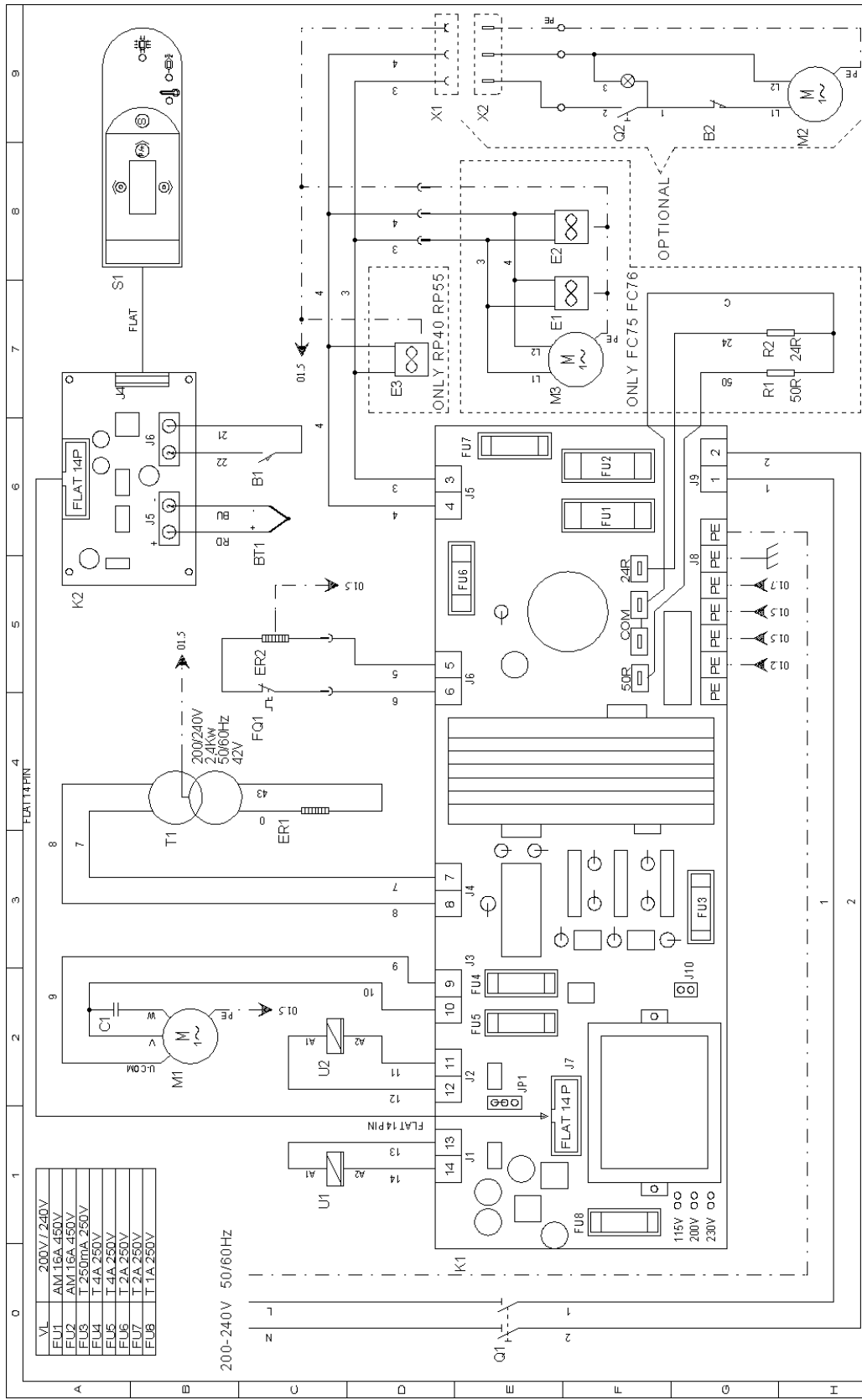
5.02



5.01



# 200-230V WIRING DIAGRAM



|                              |   |
|------------------------------|---|
|                              | PROGETTO: FOGLIO 01<br>CODICE: DI 01<br>DISEGNO NR: WDMF3101<br>TITOLO: SCHEMA ELETTICO |
|                              | DISEGNATORE: Boldori<br>DATA: 11.11.2008  |
|                              | MODIFICA  |
| 1 09/11/2009<br>2 11/11/2009 | FIRMA<br>DATA   |

## **WIRING DIAGRAM DESCRIPTION**

|              |   |
|--------------|---|
| <i>B1</i>    | <i>Cycle start limit switch</i>                     |
| <i>B2</i>    | <i>Rewinder limit switch</i>                        |
| <i>BT1</i>   | <i>Thermocouple</i>                                 |
| <i>C1</i>    | <i>Motor capacitor</i>                              |
| <i>E1/2</i>  | <i>Cooling fan</i>                                  |
| <i>E3</i>    | <i>Cooling fan</i>                                  |
| <i>ER1</i>   | <i>Sealing blade heater</i>                         |
| <i>ER2</i>   | <i>Shrinking heater</i>                             |
| <i>FQ1</i>   | <i>Safety thermostat</i>                            |
| <i>FU1/2</i> | <i>Line fuse 10.3X38</i>                            |
| <i>FU3</i>   | <i>Card supplier fuse 5X20</i>                      |
| <i>FU4/5</i> | <i>Fan motor fuse 5X20</i>                          |
| <i>FU6/7</i> | <i>Ventilator fuse, cooling pump, rewinder 5X20</i> |
| <br>         |   |
| <i>FU8</i>   | <i>Magnet fuse 5X20</i>                             |
| <i>K1</i>    | <i>Power board</i>                                  |
| <i>K2</i>    | <i>Control board</i>                                |
| <i>M1</i>    | <i>Fan motor</i>                                    |
| <i>M2</i>    | <i>Rewinder motor</i>                               |
| <i>M3</i>    | <i>Cooling pump motor</i>                           |
| <i>Q1</i>    | <i>Motor brake resistor</i>                         |
| <i>Q2</i>    | <i>Motor brake resistor</i>                         |
| <i>R1</i>    | <i>Main switch</i>                                  |
| <i>R2</i>    | <i>Rewinder switch</i>                              |
| <i>S1</i>    | <i>Membrane keyboard</i>                            |
| <i>T1</i>    | <i>Cutting transformer</i>                          |
| <i>U1</i>    | <i>Shrinking magnet</i>                             |
| <i>U2</i>    | <i>Sealing magnet</i>                               |
| <i>X1</i>    | <i>Rewinder power supply socket</i>                 |
| <i>X2</i>    | <i>Rewinder power supply plug</i>                   |



**Minipack-torre S.p.A.**

*Via Provinciale, 54 - 24044 DALMINE (BG) - ITALY*

*Tel. (035) 563525 – Fax (035) 564945*

*E-mail: [info@minipack-torre.it](mailto:info@minipack-torre.it)*

*Internet: [www.minipack-torre.it](http://www.minipack-torre.it)*