



**Minipack-torre S.p.A.**  
Via Provinciale, 54 - 24044 Dalmine (BG) - Italy  
Tel. (035) 563525 – Fax (035) 564945  
E-mail: [info@minipack-torre.it](mailto:info@minipack-torre.it)  
<http://www.minipack-torre.it>

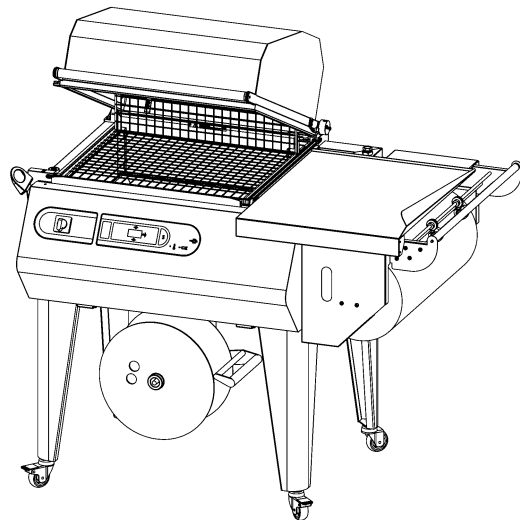
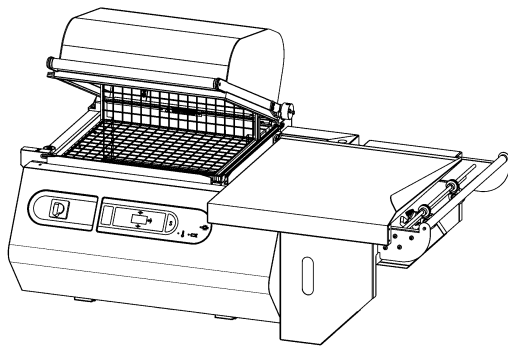


## **Spare parts catalogue**

( Valid from serial number 744 dated 03.2010 up to 2853 dated 04.2012 )

REV.01: On these machines we installed the following new parts: more powerful heat sink 2800W; new safety thermostat (FE430006).

**mod. RP55 Basic      mod. RP55**



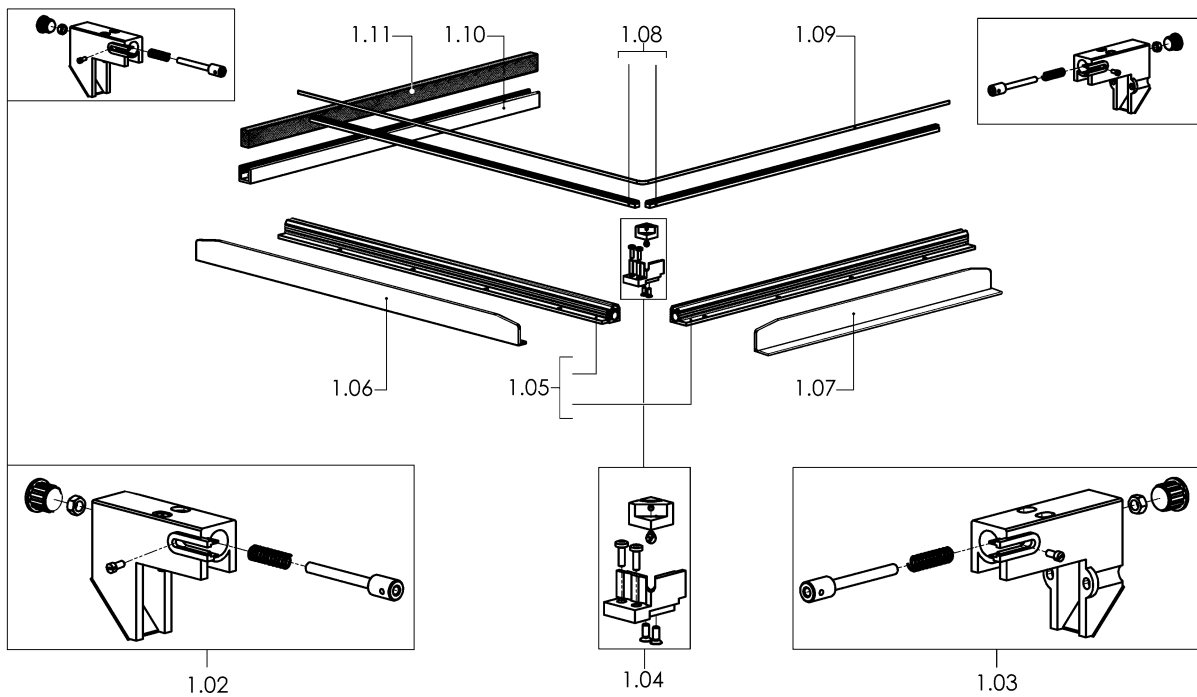
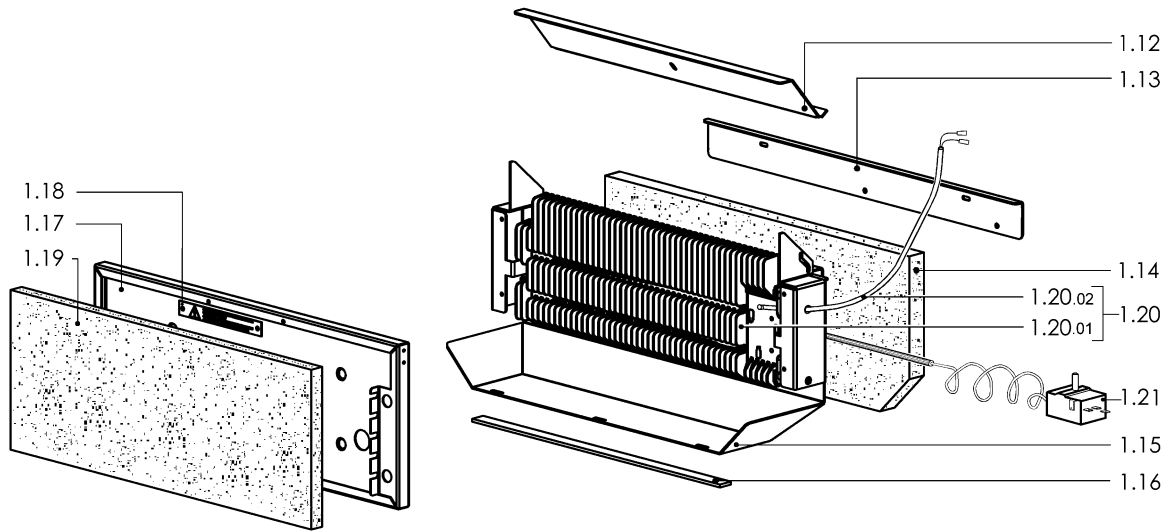
CAREFULLY READ THIS CATALOGUE BEFORE ORDERING ANY SPARE PART



DOC. N. FM112165  
REV. 01  
Ed: 01.2014

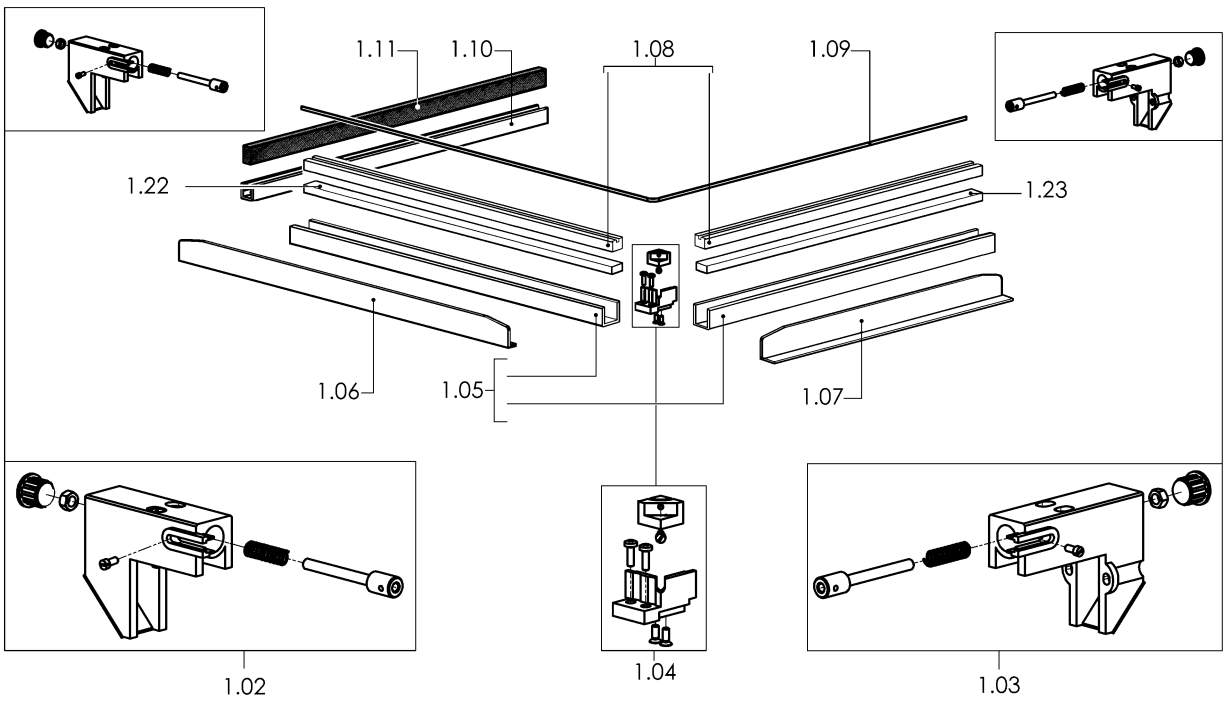
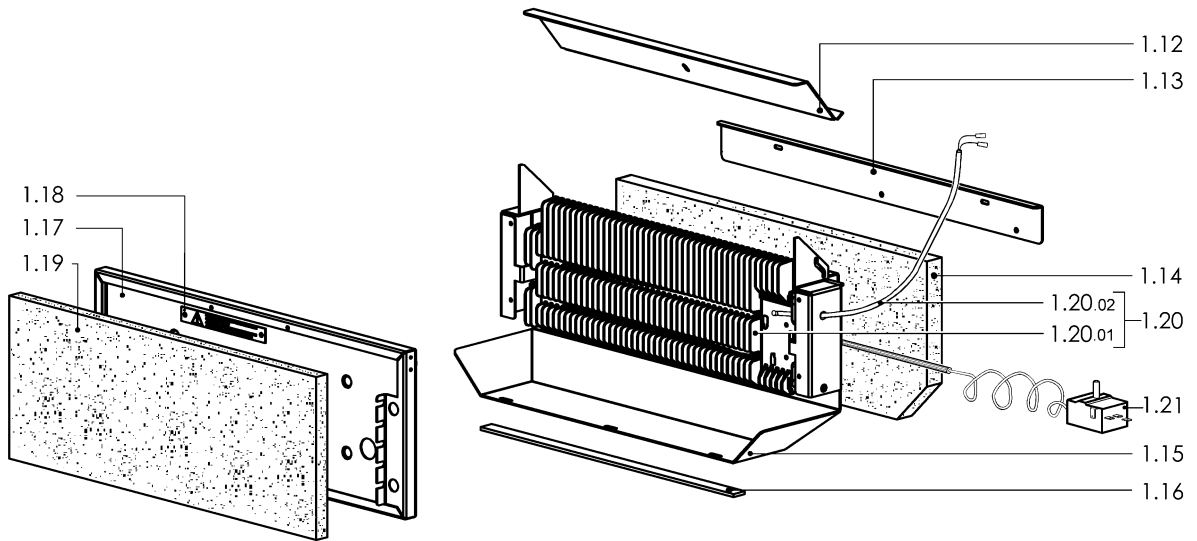
**ITEMS DESCRIPTION**  
(valid for 230V)**SCHEME 1**

<b>Pos.</b>	<b>Code</b>	<b>Description</b>
1.02	S0K00301	Front clamp kit
1.03	S0K00302	Rear clamp kit
1.04	S0K00306	Blade holder central clamp kit
1.05	S02A0306	Infill holder channel kit
1.06	S02A0901	Front guard kit
1.07	S02A0903	Side guard kit
1.08	S02A0310	Infill blocks kit
1.09	KR020001	Teflon-coated sealing blade
1.10	FM220265	Lower rubber holder side channel
1.11	FM350006	15X10 Lg.530 Neoprene rubber
1.12	FM281334	Heating chamber flap
1.13	FM091185	Rear reinforcement
1.14	FM195112	Rock wool panel
1.15	FM091123	Heaters rear plate
1.16	GM590027	Silicone 3X15 (mt.0,55)
1.17	FM091124	Heaters front plate
1.18	FM110552	High temperature plate
1.19	FM195111	Glass wool panel
1.20	KR320A02	W2800 V230 Heat sink kit
	KR320D02	W2800 V200 Heat sink kit
1.20.01	FM390024	W2800 V230 Heat sink
	FM390023	W2800 V200 Heat sink
1.20.02	FE435011	Thermocouple
1.21	FE430006	Safety thermostat



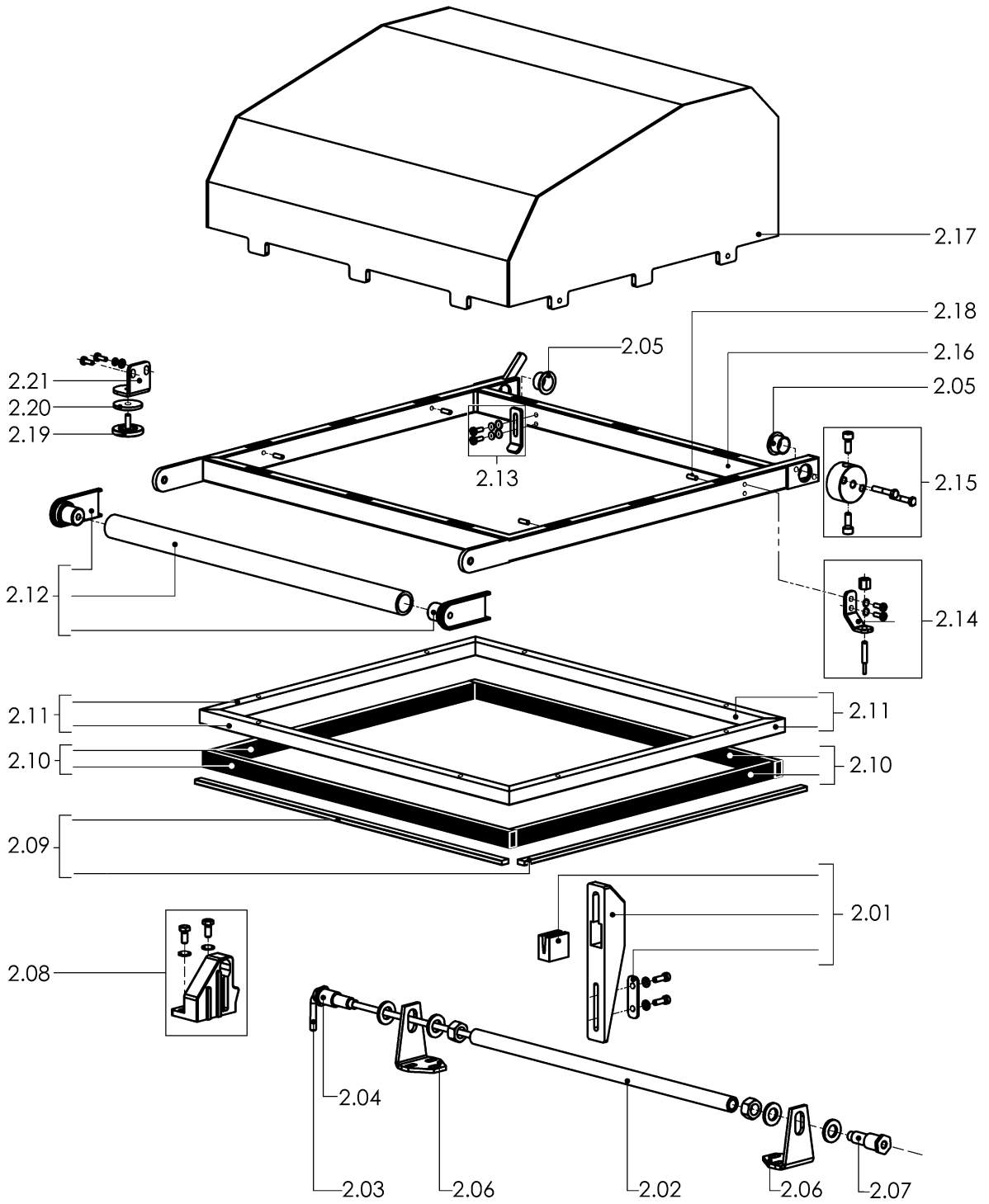
**ITEMS DESCRIPTION***(valid for 200V)***SCHEME 1.1**

<b>Pos.</b>	<b>Code</b>	<b>Description</b>
1.02	S0K00301	Front clamp kit
1.03	S0K00302	Rear clamp kit
1.04	S0K00306	Blade holder central clamp kit
1.05	S02A0311	Cutter channels kit
1.06	S02A0901	Front guard kit
1.07	S02A0903	Side guard kit
1.08	S02A0305	Blade holder bar kit
1.09	KR020001	Teflon-coated sealing blade
1.10	FM220265	Lower rubber holder side channel
1.11	FM350006	15X10 Lg.530 Neoprene rubber
1.12	FM281334	Heating chamber flap
1.13	FM091185	Rear reinforcement
1.14	FM195112	Rock wool panel
1.15	FM091123	Heaters rear plate
1.16	GM590027	Silicone 3X15 (mt.0,55)
1.17	FM091124	Heaters front plate
1.18	FM110552	High temperature plate
1.19	FM195111	Glass wool panel
1.20	KR320A02	W2800 V230 Heat sink kit
	KR320D02	W2800 V200 Heat sink kit
1.20.01	FM390024	W2800 V230 Heat sink
	FM390023	W2800 V200 Heat sink
1.20.02	FE435011	Thermocouple
1.21	FE430006	Safety thermostat
1.22	FM220402	Front thickness
1.23	FM220405	Side thickness



<b>ITEMS DESCRIPTION</b>	<b>SCHEME 2</b>
--------------------------	-----------------

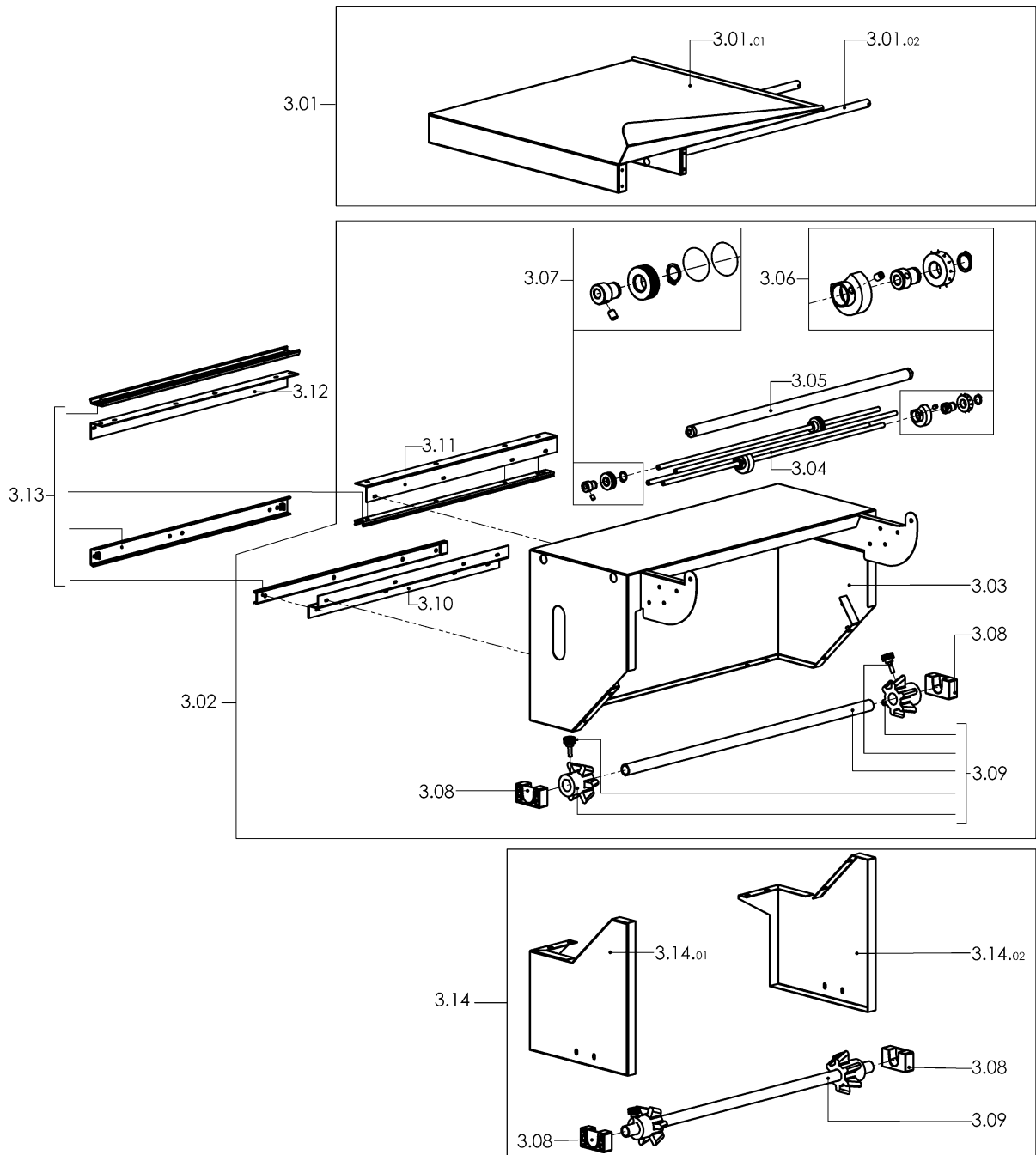
<b>Pos.</b>	<b>Code</b>	<b>Description</b>
2.01	GOK00011	Hood shock absorber kit
2.02	FM250102	Torsion bar tube
2.03	FM170002	Torsion bar
2.04	SOK01005	Hood rotation left pin kit
2.05	FM540007	Bush
2.06	FM290101	Hood support
2.07	SOK01002	Hood rotation right pin kit
2.08	SOK01004	Torsion bar housing kit
2.09	KR020002	Teflon kit
2.10	FM350095	Neoprene rubber 17x10 L.2300mm
2.11	KR320053	Upper rubber holder channels kit
2.12	S02A0402	Handgrip kit for hood
2.13	SOK00405	Heating chamber flap opening lever kit
2.14	SOK00406	Microswitch screw kit
2.15	SOK01001	Torsion bar blocking flange kit
2.16	FM300099	Upper hood frame
2.17	FM081028	Upper hood
2.18	FM852207	M4x14 screw
2.19	FM160026	Electromagnet contrast
2.20	FM350011	Electromagnet contrast washer
2.21	FM280011	Electromagnet contrast square



<b>ITEMS DESCRIPTION</b>	<b>SCHEME 3</b>
--------------------------	-----------------


<b>Pos.</b>	<b>Code</b>	<b>Description</b>
3.01	PC32B001	RAL7016B. packaging plate pre-assembly
3.01.01	FM091137	RAL7016B. packaging plate
3.01.02	FM300097	Packaging plate frame
3.01.01	FM091176	Inox packaging plate (optional)
3.02	PB32B001	RAL7035B. roll support pre-assembly
3.03	FM091132	RAL7035B. roll support
3.04	FM030004	Microperforator rod
3.05	FM710320	Idle roll
3.06	S0K00605	Microperforator with needles kit
3.07	S0K00607	Slotted microperforator kit
3.08	FM340510	Support x reel holder roller
3.09	S02A0602	Film roll tube kit
3.10	FM220524	"Z" shaped channel for male guide
3.11	FM220522	Upper male guide corner
3.12	FM220511	Female guide corner
3.13	S02A0908	Coupled guides kit
3.14	PB32N001	Second film roll support kit (optional)
3.14.01	FM090333	Left second film roll support
3.14.02	FM090332	Right second film roll support

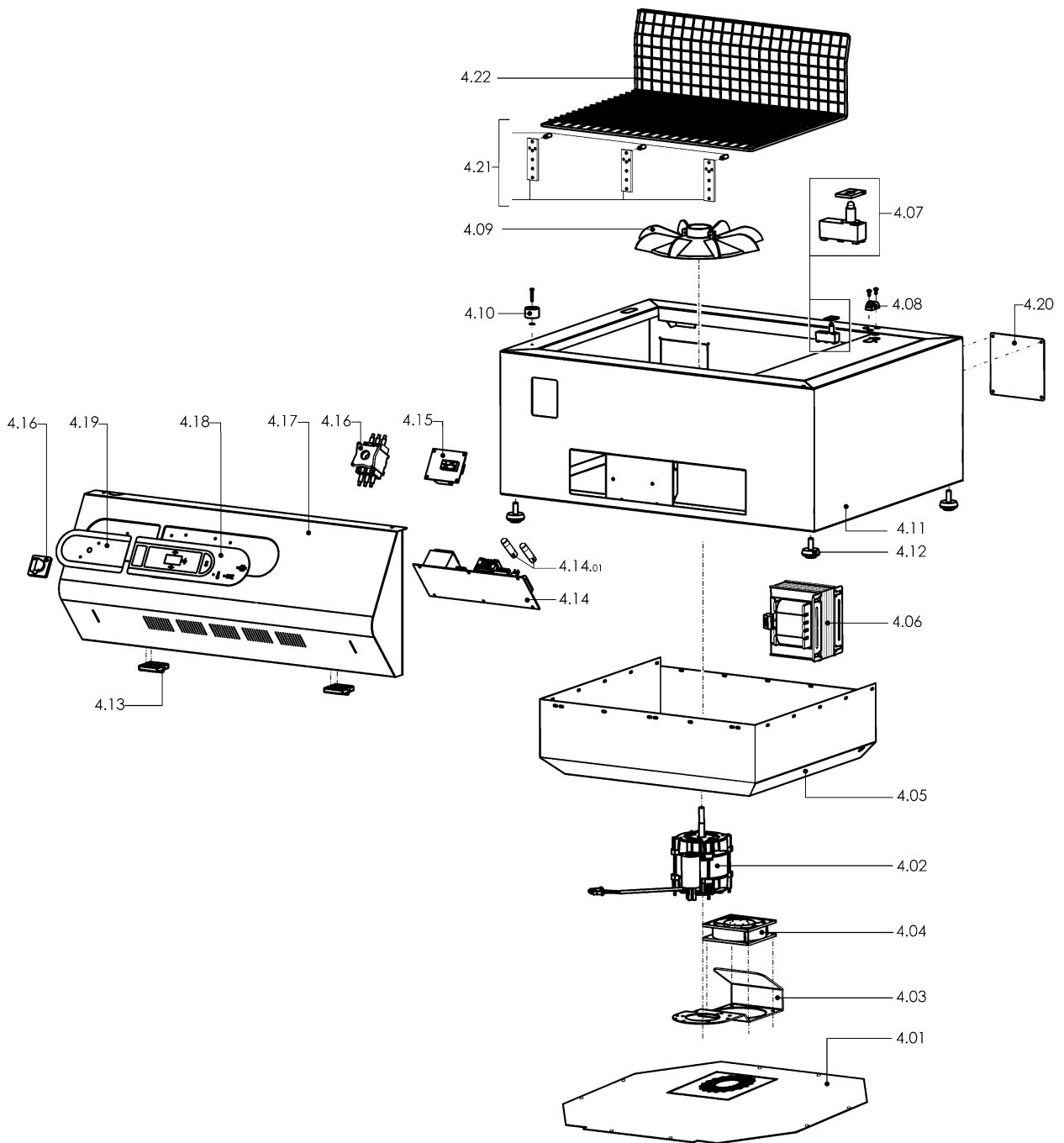




<b>ITEMS DESCRIPTION</b>	<b>SCHEME 4</b>
--------------------------	-----------------

<b>Pos.</b>	<b>Code</b>	<b>Description</b>
4.01	FM090644	Lower cover (valid from serial number xxx dated xxx)
	FM090640 (old)	Lower cover (valid up to serial number xxx dated xxx)
4.02	FE241057 FE240023	Single-phase motor 230V Single-phase motor 200V
4.03	FM090982	Ventilator support
4.04	FE260020 FE260022	Ventilator 230V Ventilator 200V
4.05	FM090229	Lower hood
4.06	FE440618	Transformer 2400VA (200-230V)
4.07	S0K01208	Hood microswitch kit
4.08	FM230002	Microswitch guard
4.09	S0K01120	Fan kit
4.10	FE130013	Electromagnet
4.11	FM091181	RAL7035B. fairing
4.12	FM330001	Adjusting foot (for the "RP55 Basic" version only)
4.13	FM510084	Hinge
4.14	FE120264	Power board 230V (valid from serial number 223 dated 06.2009)
	FE120254 (old)	Power board kit 230V (valid up to serial number 222 dated 06.2009)
	FE120255	Power board 200V
4.14.01	FE290407	Fuse 10.3X38 AM 16A (200/230V)
4.15	FE120263	Control board (valid from serial number 223 dated 06.2009)
	FE120253 (old)	Control board kit (valid up to serial number 222 dated 06.2009)
4.16	FE080001	Main switch 20A (200-230V)
4.17	FM091128	RAL7035B. front panel
4.18	FE120601	Membrane keyboard
4.19	FM110340	Push button panel adhesive
4.20	FM091148	RAL7035B. rear panel
4.21	S0K01301	Screened plate front support
4.22	FM130002	Reticulated plate

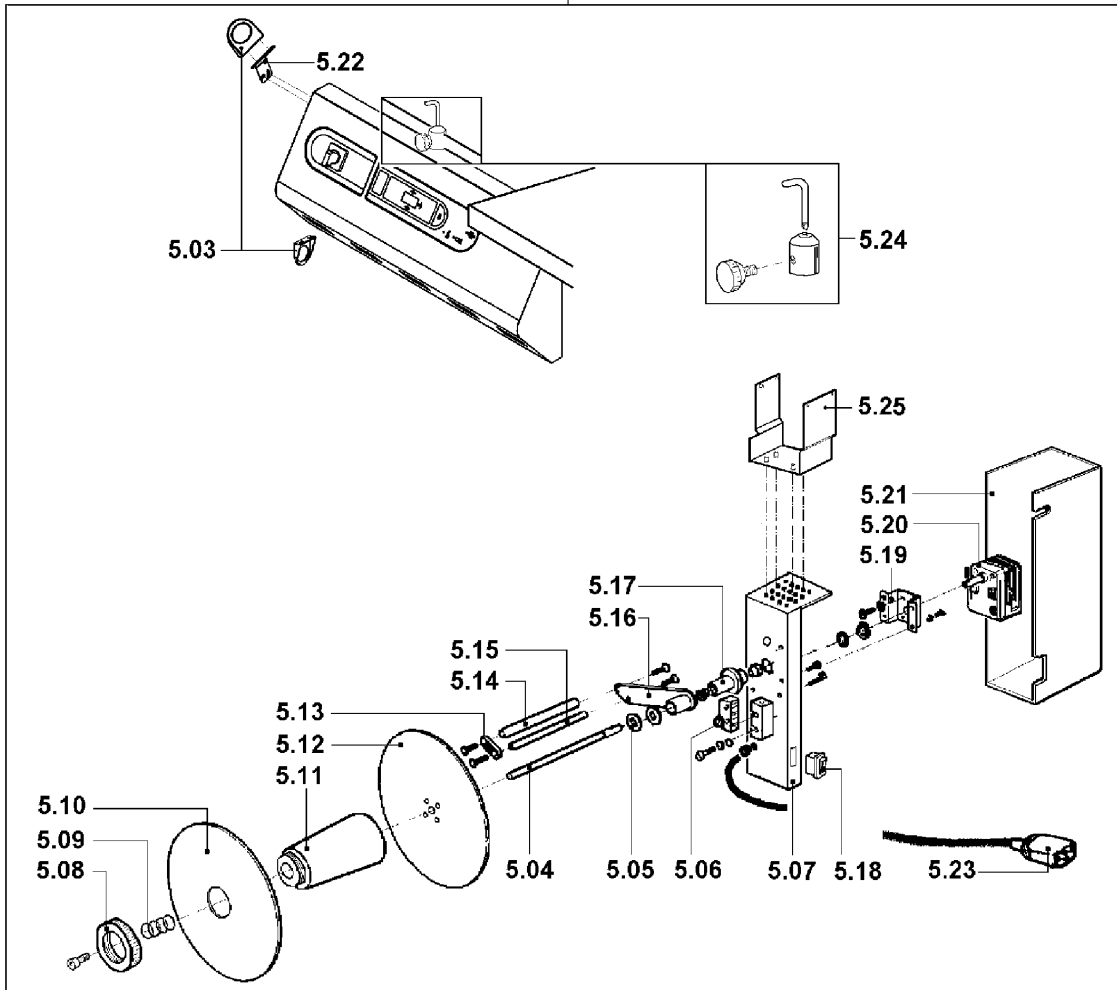
	<p>The new power board FE120264 as well as the new control board FE120263 <u>are not interchangeable with the previous boards FE120254 and FE120253.</u></p> <p>Therefore, if you need a power board for a machine with a serial number prior to the one reported, you must order code FE120254. <u>This way, you will receive a kit composed of the new power board with fuses and the new control board.</u></p> <p>If you need a control board, you must order code FE120253. <u>This way, you will receive the same new kit composed of the new power board with fuses and the new control board.</u></p>
---	---



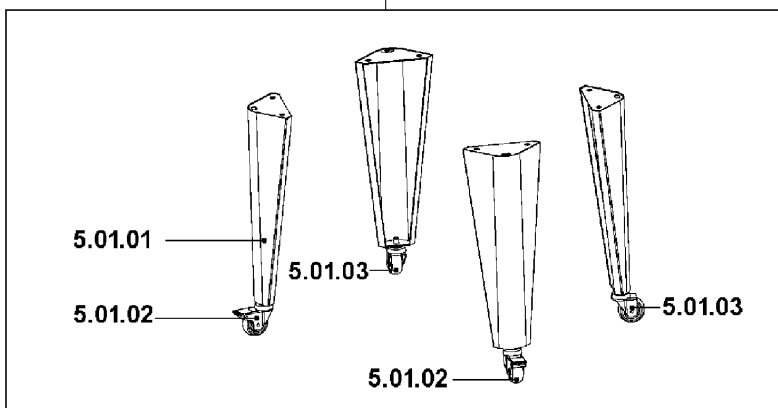
<b>ITEMS DESCRIPTION</b>	<b>SCHEME 5</b>
--------------------------	-----------------

<b>Pos.</b>	<b>Code</b>	<b>Description</b>
5.01	GB31B001	RAL7035B. supports kit
5.01.01	FM091036	RAL7035B. support
5.01.02	FM770522	Wheel Ø80 with brake
5.01.03	FM770521	Wheel Ø80
5.02	AV990A15	(200-230V) Rewinder group
5.03	FM160231	Film guiding ring
5.04	FM010041	Film rewinder shaft
5.05	FM160111	Washer
5.06	FE220105	Microswitch
5.07	FM290175	Rewinder support
5.08	FM160104	Ring nut
5.09	FM170161	Spring
5.10	FM120040	Movable flange
5.11	FM250128	Hub
5.12	FM120041	Fixed flange
5.13	FM280326	Plate
5.14	FM250074	Roller
5.15	FM030063	Rod
5.16	FM060027	Lever
5.17	FM290172	Lever support
5.18	FE190032	Switch
5.19	FM290107	Gearmotor support
5.20	FE250016	200-220V gearmotor
5.21	FM095138	Case
5.22	FM290525	Film guiding ring square
5.23	FE310121	Cable 3X0,75X1000
5.24	S0K00407	Film guide kit
5.25	FM290432	RAL9005B. rewinder support

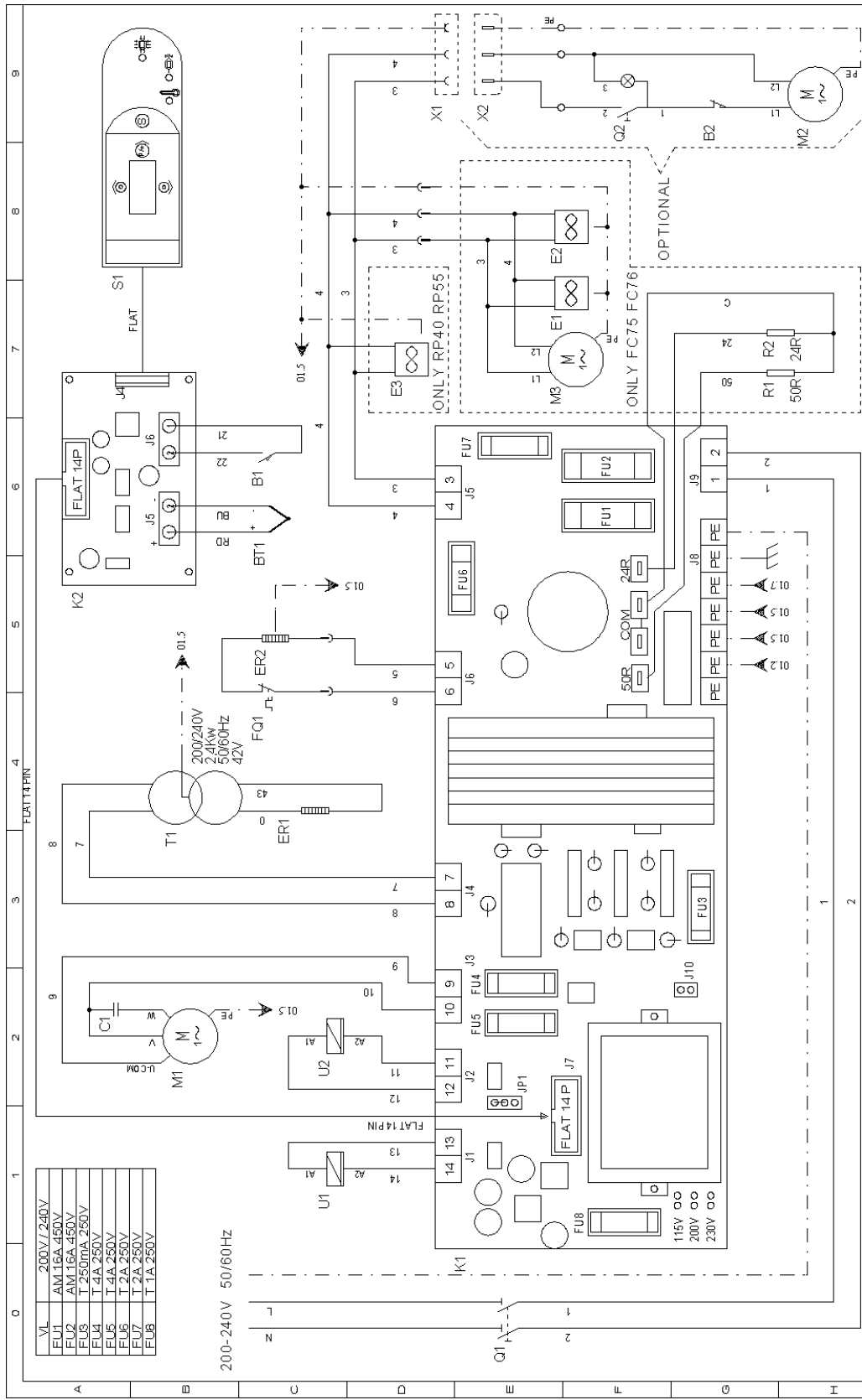
5.02



5.01



# 200-230V WIRING DIAGRAM



	PROGETTO: FOGLIO 01 CODICE: DI 01 DISEGNO NR: WDMF3101 TITOLO: SCHEMA ELETTICO
	DISEGNATORE: Boldori DATA: 11.11.2008
	MODIFICA
1	09/11/2009
2	11/11/2009
REV	DATA FIRMA

## **WIRING DIAGRAM DESCRIPTION**

<i>B1</i>	<i>Cycle start limit switch</i>
<i>B2</i>	<i>Rewinder limit switch</i>
<i>BT1</i>	<i>Thermocouple</i>
<i>C1</i>	<i>Motor capacitor</i>
<i>E1/2</i>	<i>Cooling fan</i>
<i>E3</i>	<i>Cooling fan</i>
<i>ER1</i>	<i>Sealing blade heater</i>
<i>ER2</i>	<i>Shrinking heater</i>
<i>FQ1</i>	<i>Safety thermostat</i>
<i>FU1/2</i>	<i>Line fuse 10.3X38</i>
<i>FU3</i>	<i>Card supplier fuse 5X20</i>
<i>FU4/5</i>	<i>Fan motor fuse 5X20</i>
<i>FU6/7</i>	<i>Ventilator fuse, cooling pump, rewinder 5X20</i>
<i>FU8</i>	<i>Magnet fuse 5X20</i>
<i>K1</i>	<i>Power board</i>
<i>K2</i>	<i>Control board</i>
<i>M1</i>	<i>Fan motor</i>
<i>M2</i>	<i>Rewinder motor</i>
<i>M3</i>	<i>Cooling pump motor</i>
<i>Q1</i>	<i>Motor brake resistor</i>
<i>Q2</i>	<i>Motor brake resistor</i>
<i>R1</i>	<i>Main switch</i>
<i>R2</i>	<i>Rewinder switch</i>
<i>S1</i>	<i>Membrane keyboard</i>
<i>T1</i>	<i>Cutting transformer</i>
<i>U1</i>	<i>Shrinking magnet</i>
<i>U2</i>	<i>Sealing magnet</i>
<i>X1</i>	<i>Rewinder power supply socket</i>
<i>X2</i>	<i>Rewinder power supply plug</i>



***Minipack-torre S.p.A.***

*Via Provinciale, 54 - 24044 DALMINE (BG) - ITALY*

*Tel. (035) 563525 – Fax (035) 564945*

*E-mail: [info@minipack-torre.it](mailto:info@minipack-torre.it)*

*Internet: [www.minipack-torre.it](http://www.minipack-torre.it)*