



Minipack-torre S.p.A.
Via Provinciale, 54 - 24044 Dalmine (BG) - Italy
Tel. (035) 563525 – Fax (035) 564945
E-mail: info@minipack-torre.it
<http://www.minipack-torre.it>



Replay 55 evo

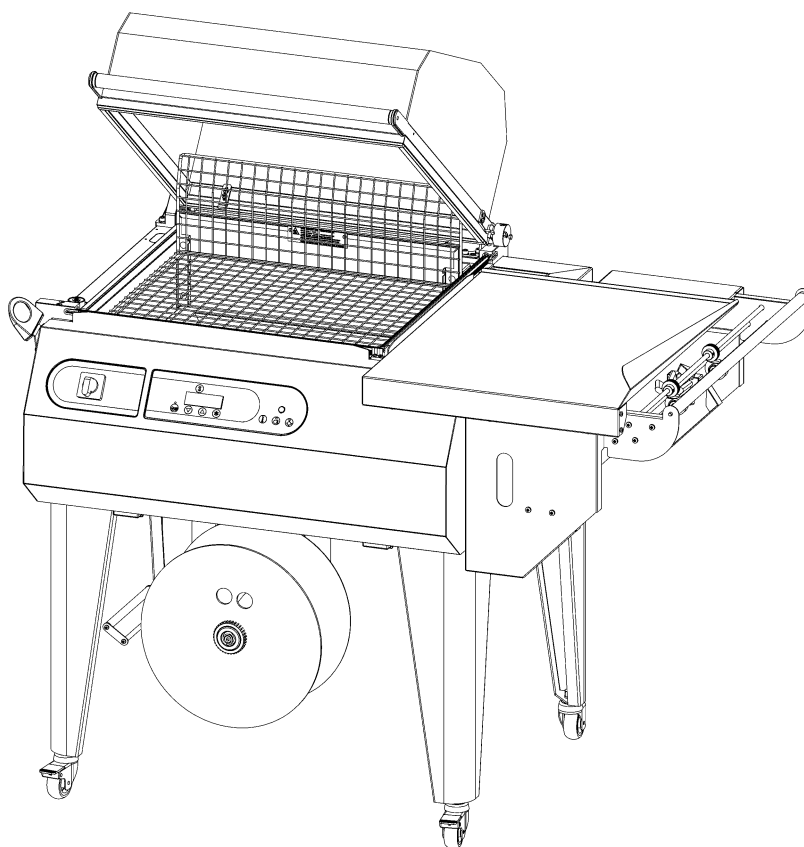
(Machine code: **MF32BA20 – MF32BA21 – MF32BD20**)

Spare parts catalogue

MF32BA20: Valid from s.n. 106 dated 11.2015 up to 1801012 dated 03.2018

MF32BA21: Valid from s.n. 106 dated 11.2015 up to 1800529 dated 02.2018

MF32BD20: Valid from s.n. 106 dated 11.2015 up to 2435 dated 11.2017



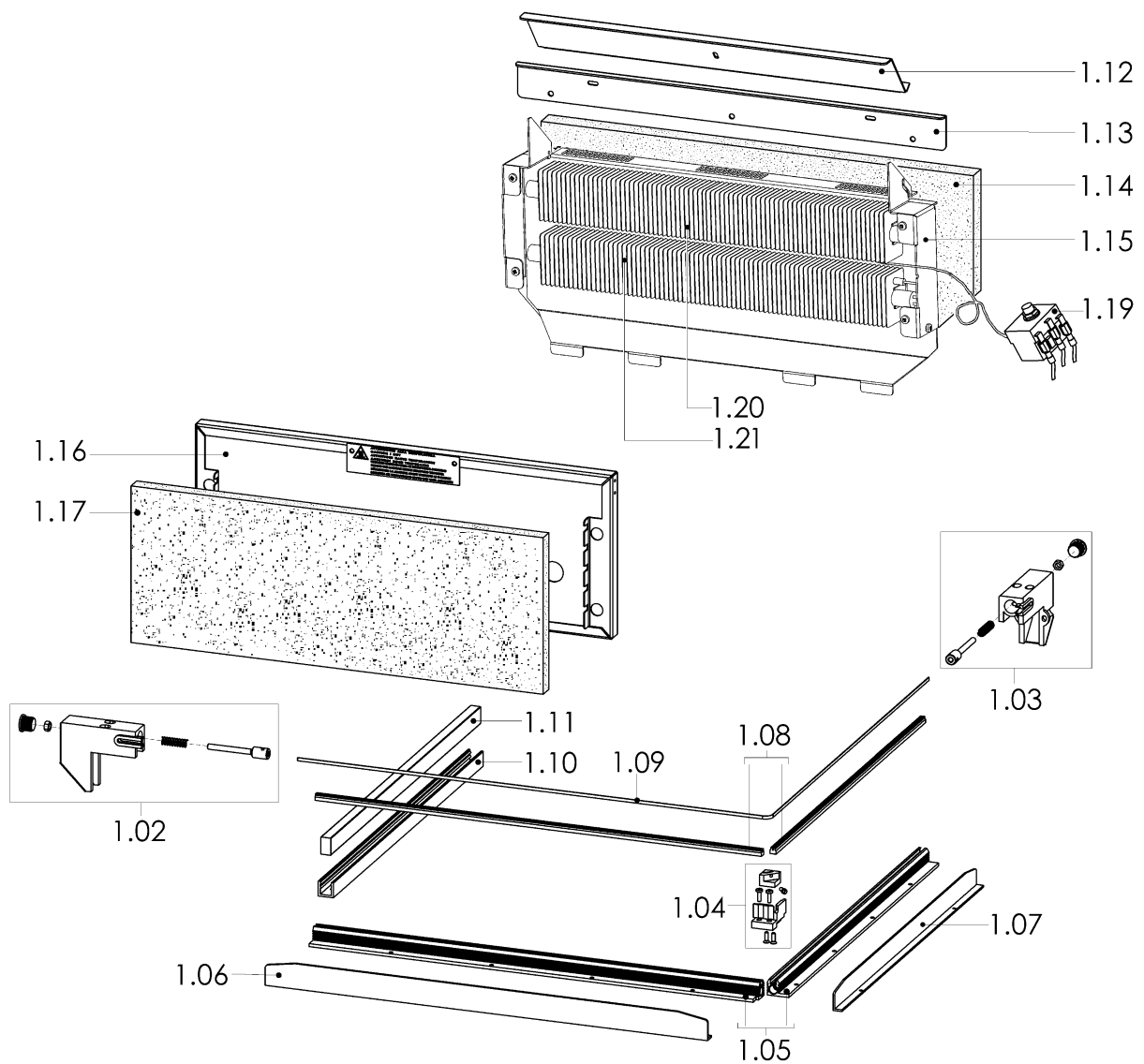
CAREFULLY READ THIS CATALOGUE BEFORE ORDERING ANY SPARE PART



DOC. N. FM112264
REV. 0
Ed: 04.2019

ITEMS DESCRIPTION (valid for 230V)	SCHEME 1
--	-----------------

Pos.	Code	Description
1.02	S0K00301	Front clamp kit
1.03	S0K00302	Rear clamp kit
1.04	S0K00306	Blade holder central clamp kit
1.05	S02A0306	Infill holder channel kit
1.06	S02A0901	Front guard kit
1.07	S02A0903	Side guard kit
1.08	S02A0310	Infill blocks kit
1.09	KR020001	Teflon-coated sealing blade
1.10	FM220265	Lower rubber holder side channel
1.11	FM350006	15x10 lg.530mm Neoprene rubber
1.12	FM281334	Heating chamber flap
1.13	FM091185	Rear reinforcement
1.14	FM195123	Rock wool panel
1.15	FM091370	Heaters rear plate
1.16	FM091124	Heaters front plate
1.17	FM195111	Glass wool panel
1.19	FE430013	Safety thermostat (See the position 4.24)
1.20	FE380812	Strip heater W1100 V90 TC (for 230V)
1.21	FE380811	Strip heater W1700 V140 (for 230V)

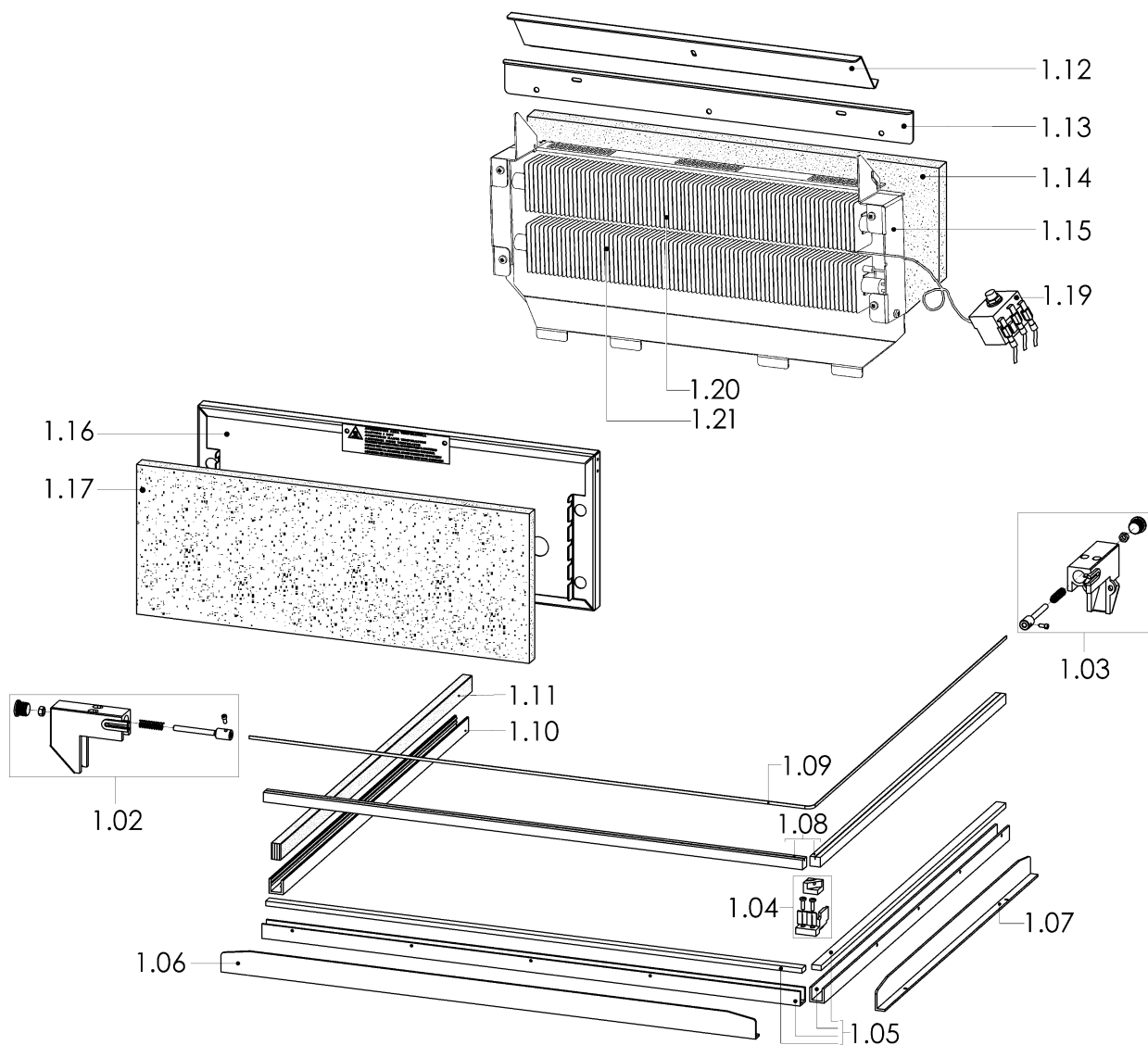


ITEMS DESCRIPTION

(valid for 200V)

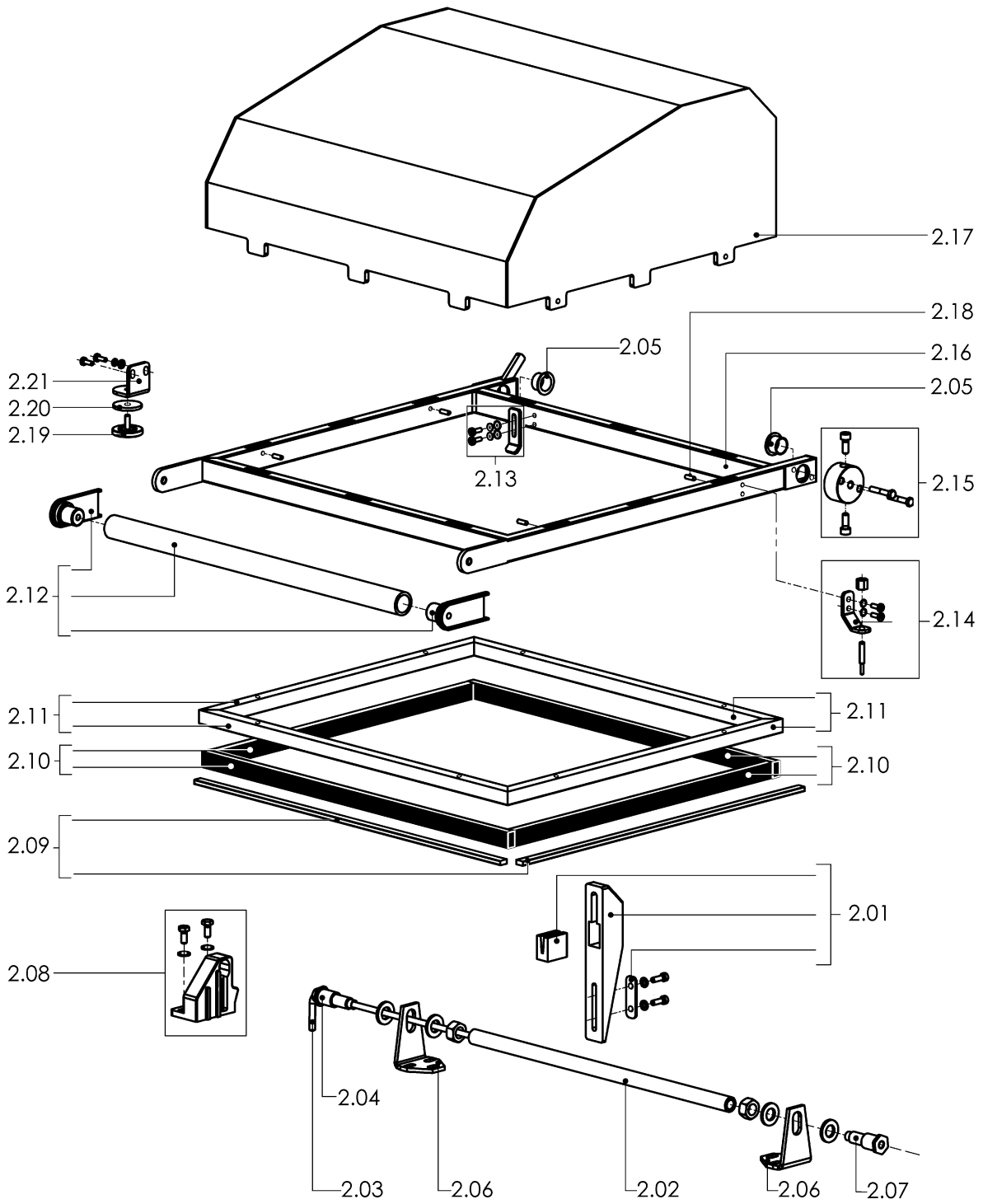
SCHEME 1.1

Pos.	Code	Description
1.02	S0K00301	Front clamp kit
1.03	S0K00302	Rear clamp kit
1.04	S0K00306	Blade holder central clamp kit
1.05	S02A0311	Cutter channels kit
1.06	S02A0901	Front guard kit
1.07	S02A0903	Side guard kit
1.08	S02A0305	Blade holder bar kit
1.09	KR020001	Teflon-coated sealing blade
1.10	FM220265	Lower rubber holder side channel
1.11	FM350006	15x10 lg.530mm Neoprene rubber
1.12	FM281334	Heating chamber flap
1.13	FM091185	Rear reinforcement
1.14	FM195123	Rock wool panel
1.15	FM091370	Heaters rear plate
1.16	FM091124	Heaters front plate
1.17	FM195111	Glass wool panel
1.19	FE430013	Safety thermostat (See the position 4.24)
1.20	FE380814	Strip heater W1100 V77 TC (for 200V)
1.21	FE380813	Strip heater W1700 V123 (for 200V)



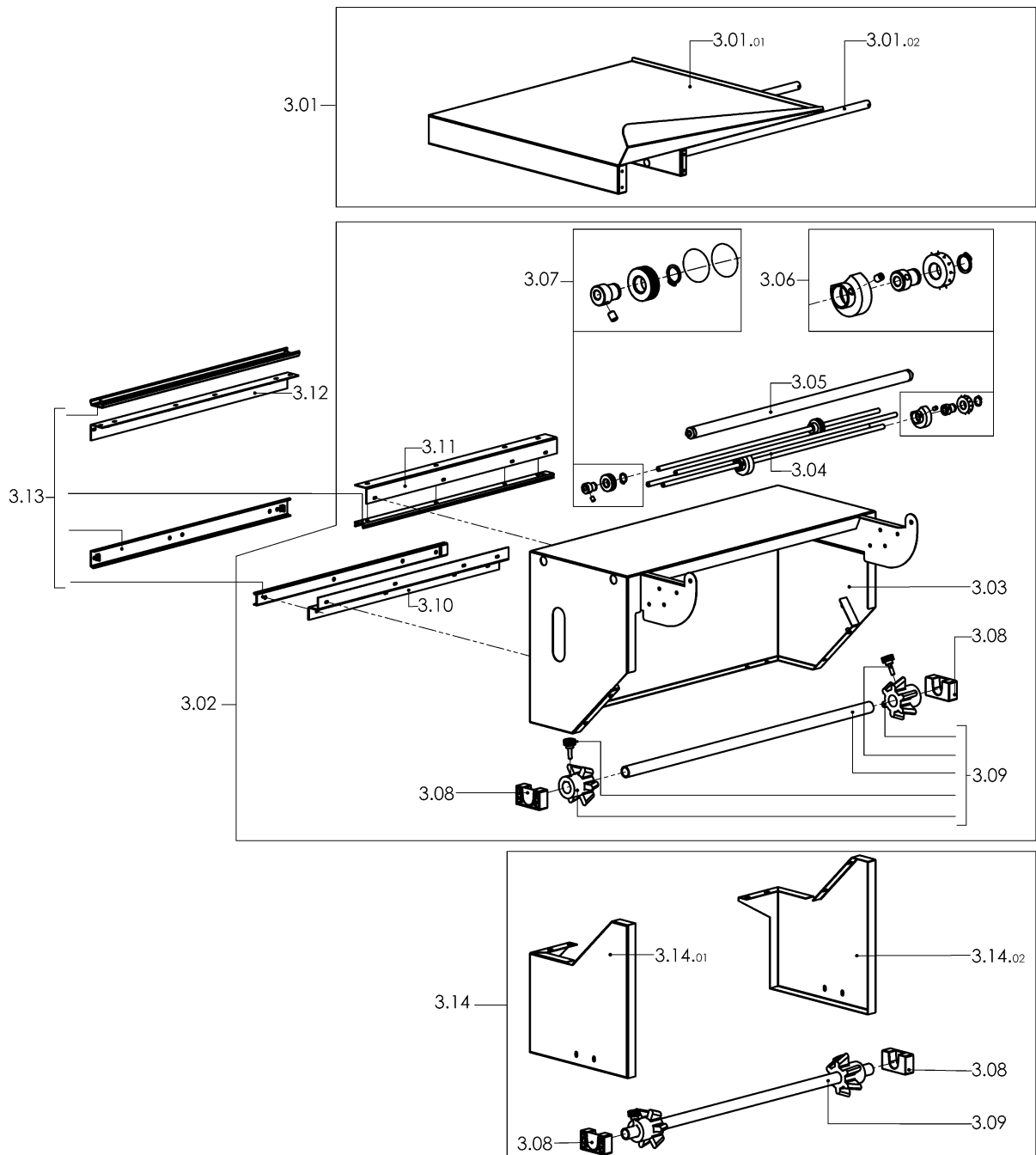
ITEMS DESCRIPTION	SCHEME 2
--------------------------	-----------------

Pos.	Code	Description
2.01	G0K00011	Hood shock absorber kit
2.02	FM250102	Torsion bar tube
2.03	FM170002	Torsion bar
2.04	S0K01005	Hood rotation left pin kit
2.05	FM540007	Bush
2.06	FM290101	Hood support
2.07	S0K01002	Hood rotation right pin kit
2.08	S0K01004	Torsion bar housing kit
2.09	KR020002	Teflon kit
2.10	FM350095	Neoprene rubber 17x10 lg.2300mm
2.11	KR320053	Upper rubber holder channels kit
2.12	S02A0402	Handgrip kit for hood
2.13	S0K00405	Heating chamber flap opening lever kit
2.14	S0K00406	Microswitch screw kit
2.15	S0K01001	Torsion bar blocking flange kit
2.16	FM300099	Upper hood frame
2.17	FM081028	Upper hood
2.18	FM852207	M4x14 screw
2.19	FM160026	Electromagnet contrast
2.20	FM350011	Electromagnet contrast washer
2.21	FM280011	Electromagnet contrast square



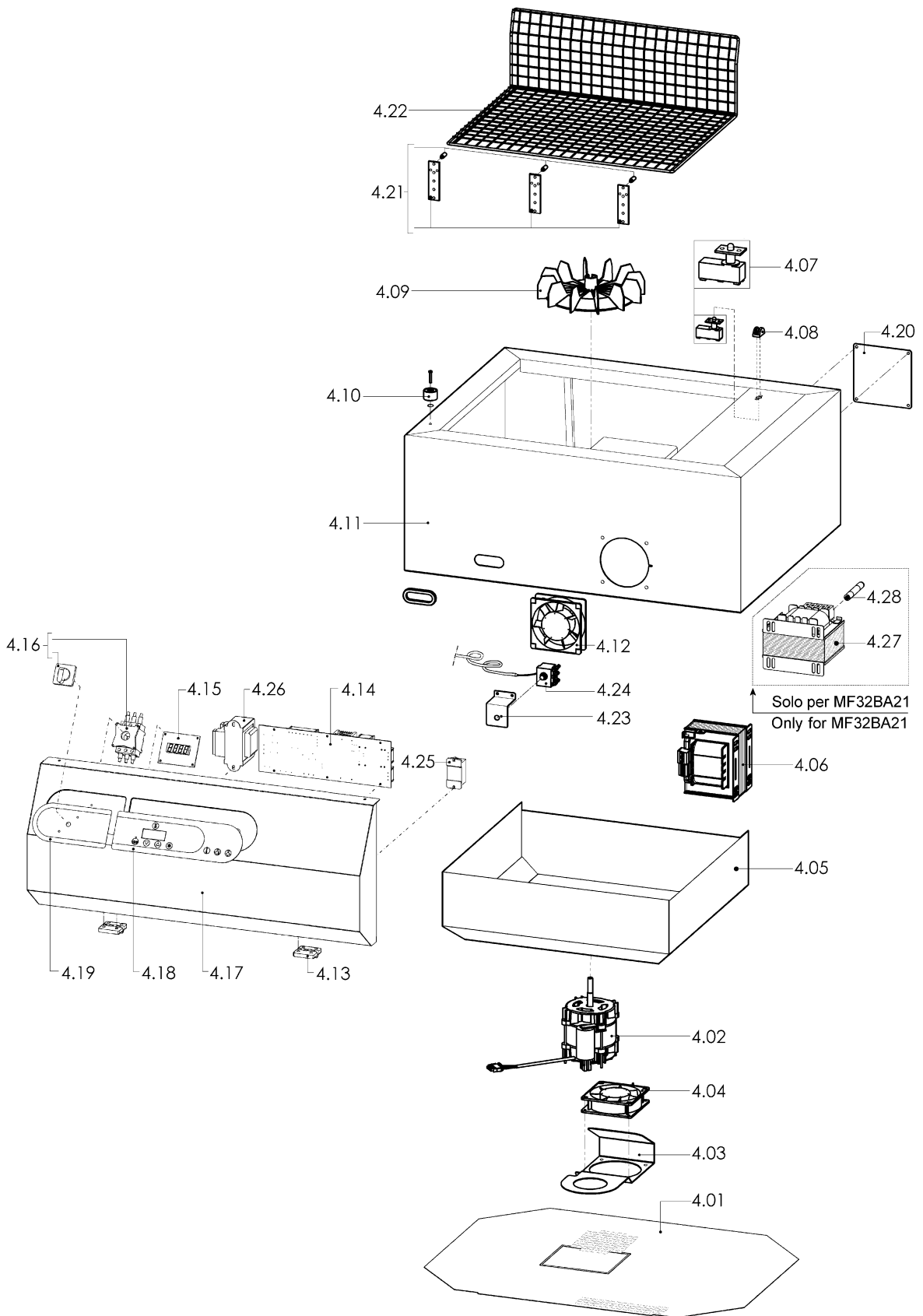
ITEMS DESCRIPTION	SCHEME 3
--------------------------	-----------------

Pos.	Code	Description
3.01	PC32B001	RAL7016B. packaging plate pre-assembly
3.01.01	FM091137	RAL7016B. packaging plate
3.01.02	FM300097	Packaging plate frame
3.01.01	FM091176	Inox packaging plate (optional)
3.02	PB32B001	RAL7035B. roll support pre-assembly
3.03	FM091132	RAL7035B. roll support
3.04	FM030004	Microperforator rod
3.05	FM710320	Idle roll
3.06	S0K00605	Microperforator with needles kit
3.07	S0K00607	Slotted microperforator kit
3.08	FM340510	Support x reel holder roller
3.09	S02A0602	Film roll tube kit
3.10	FM220524	"Z" shaped channel for male guide
3.11	FM220522	Upper male guide corner
3.12	FM220511	Female guide corner
3.13	S02A0908	Coupled guides kit
3.14	PB32N001	Second film roll support kit (optional)
3.14.01	FM090333	Left second film roll support
3.14.02	FM090332	Right second film roll support



ITEMS DESCRIPTION	SCHEME 4
--------------------------	-----------------

Pos.	Code	Description
4.01	FM090320	Lower cover
4.02	FE241057 FE240023	Single-phase motor (230V) Single-phase motor (200V)
4.03	FM090982 FM091418	Ventilator support (230V) Ventilator support (200V)
4.04	FE260020 FE260022	Ventilator (230V) Ventilator (200V)
4.05	FM090208	Lower hood
4.06	FE440618	Transformer 2400VA (200-230V)
4.07	S0K01208	Hood microswitch kit
4.08	FM230002	Microswitch guard
4.09	S0K01121	Fan kit
4.10	FE130015	Electromagnet
4.11	FM091221	RAL7035B. fairing
4.12	FE260020 FE260022	Ventilator (230V) Ventilator (200V)
4.13	FM510084	Hinge
4.14	FE120288	Power board (200-230V)
4.15	FE120287	Control board
4.16	FE080001	Main switch 20A (200-230V)
4.17	FM091413	RAL7035B. front panel
4.18	FE120606	Membrane keyboard
4.19	FM110626	Push button panel adhesive
4.20	FM091148	RAL7035B. rear panel
4.21	S0K01301	Screened plate front support
4.22	FM130002	Reticulated plate
4.23	FM095966	Support
4.24	FE430013	Safety thermostat (See the position 1.19)
4.25	FE370016	Relay
4.26	FE440031	Transformer 70VA (200-230V)
4.27	FE440202	Autotransformer 3500VA (180-190-200-210-230V) <i>(only for MF32BA21)</i>
4.28	FE290260	Fuse 6.3X32 T 20A <i>(only for MF32BA21)</i>

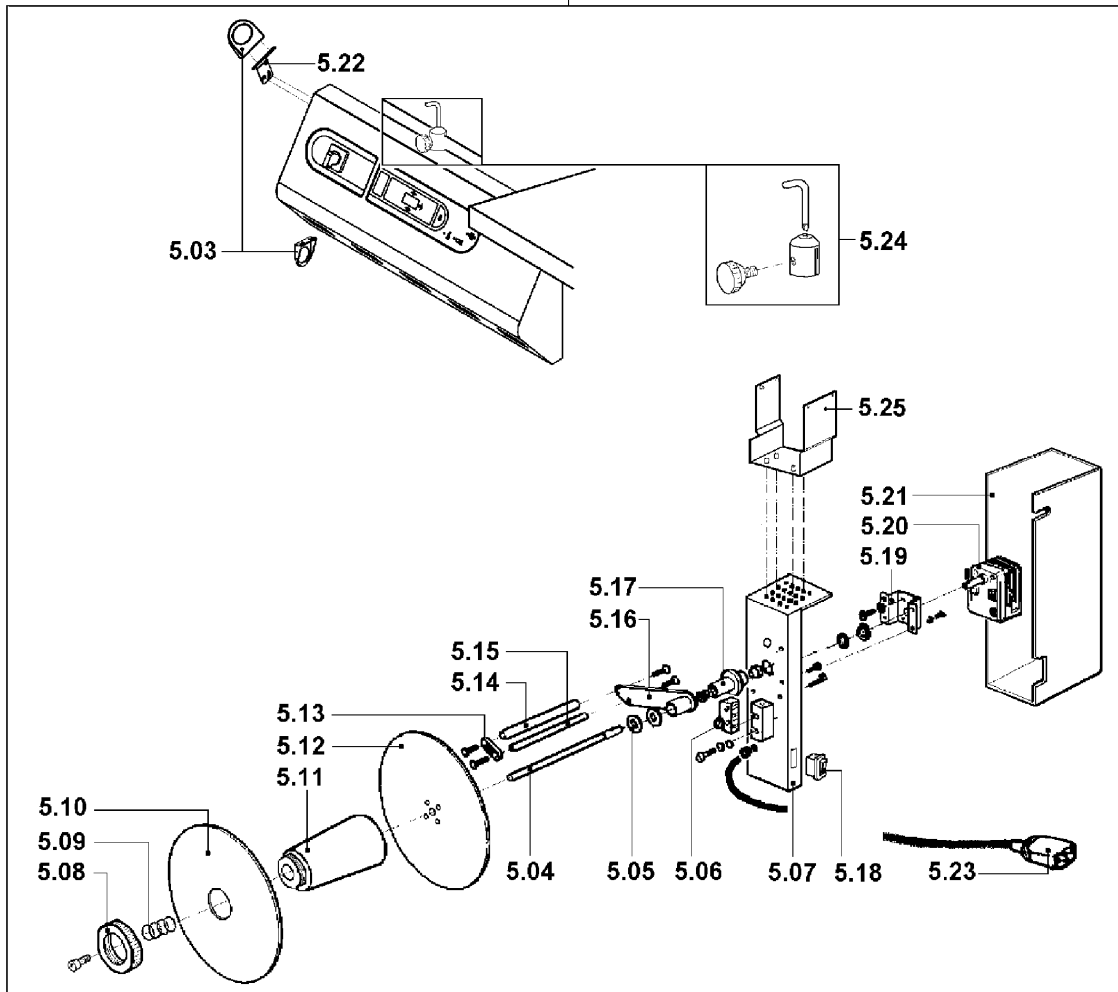


ITEMS DESCRIPTION	SCHEME 5
--------------------------	-----------------

Pos.	Code	Description
5.01	GB31B001	Valid for MF32BA20-MF32BA21 (230V)
5.01.01	FM091036	RAL7035B. grey legs kit (h= 482mm)
5.01.02	FM770522	RAL7035B. grey leg (h= 482mm)
5.01.03	FM770521	Wheel Ø80 with brake
		Wheel Ø80
5.01	GB31N001	Valid for MF32BD20 (200V)
5.01.01	FM091330	RAL9005B. black legs kit (h= 382mm)
5.01.02	FM770522	RAL9005B. black leg (h= 382mm)
5.01.03	FM770521	Wheel Ø80 with brake
		Wheel Ø80

5.02	AV990A15	(200-230V) Rewinder group
5.03	FM160231	Film guiding ring
5.04	FM010041	Film rewinder shaft
5.05	FM160111	Washer
5.06	FE220105	Microswitch
5.07	FM290175	Rewinder support
5.08	FM160104	Ring nut
5.09	FM170161	Spring
5.10	FM120040	Movable flange
5.11	FM250128	Hub
5.12	FM120041	Fixed flange
5.13	FM280326	Plate
5.14	FM250074	Roller
5.15	FM030076	Rod
5.16	FM060027	Lever
5.17	FM290172	Lever support
5.18	FE190032	Switch
5.19	FM290107	Gearmotor support
5.20	FE250016	Gearmotor (200-220V)
5.21	FM095138	Case
5.22	FM290525	Film guiding ring square
5.23	FE310121	Cable 3X0,75X1000
5.24	S0K00407	Film guide kit
5.25	FM290432	RAL9005B. rewinder support

5.02



5.01

