



**Minipack-torre S.p.A.**  
Via Provinciale, 54 - 24044 Dalmine (BG) - Italy  
Tel. (035) 563525  
E-mail: info@minipack.it  
<http://www.minipack.it>



# Media Matic

## Spare parts catalogue

(Valid from s.n. 1804442 dated 11.2018.  
With the exclusion of s.n. 1804484, 1805048, 1805049, 1805050)

REV.04: new safety microswitch



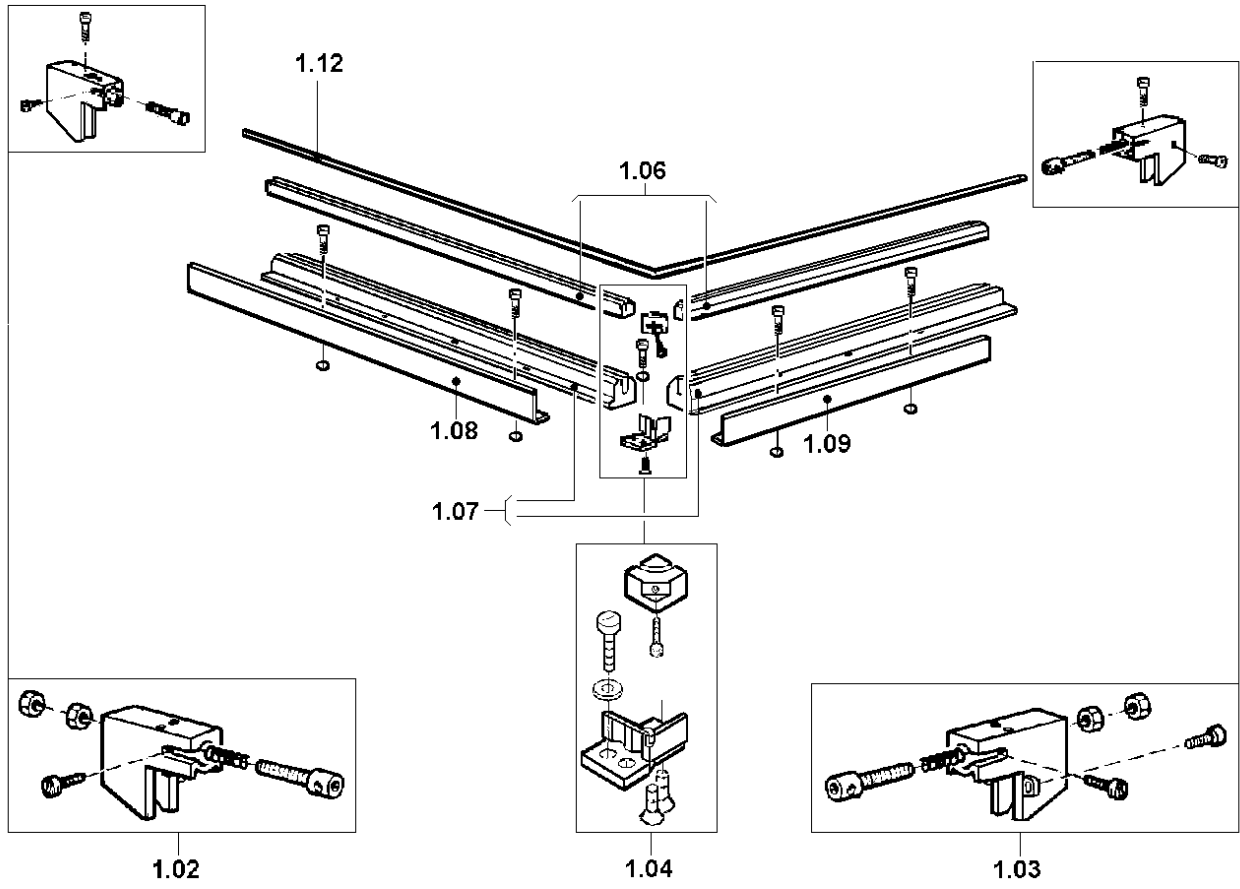
CAREFULLY READ THIS CATALOGUE BEFORE ORDERING ANY SPARE PART



DOC. N. FM112018  
REV. 04  
ED. 03.2023

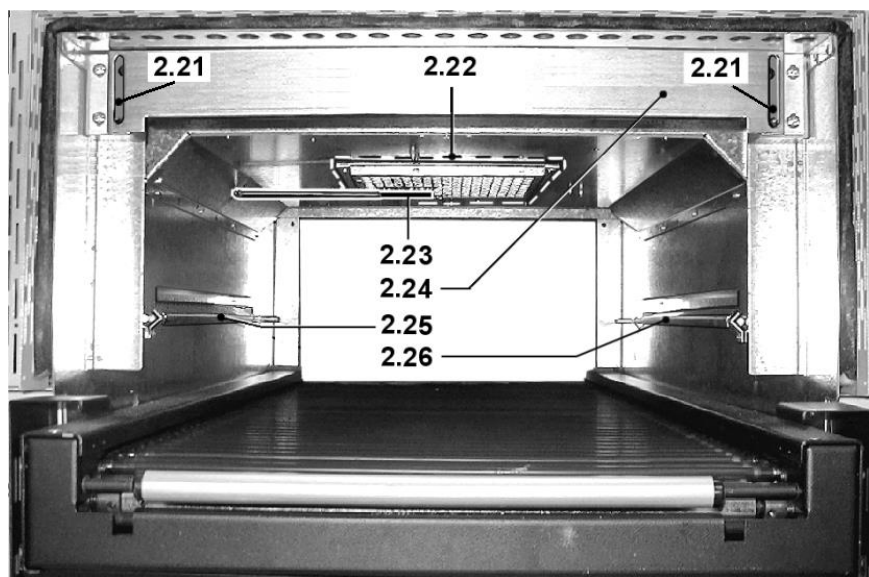
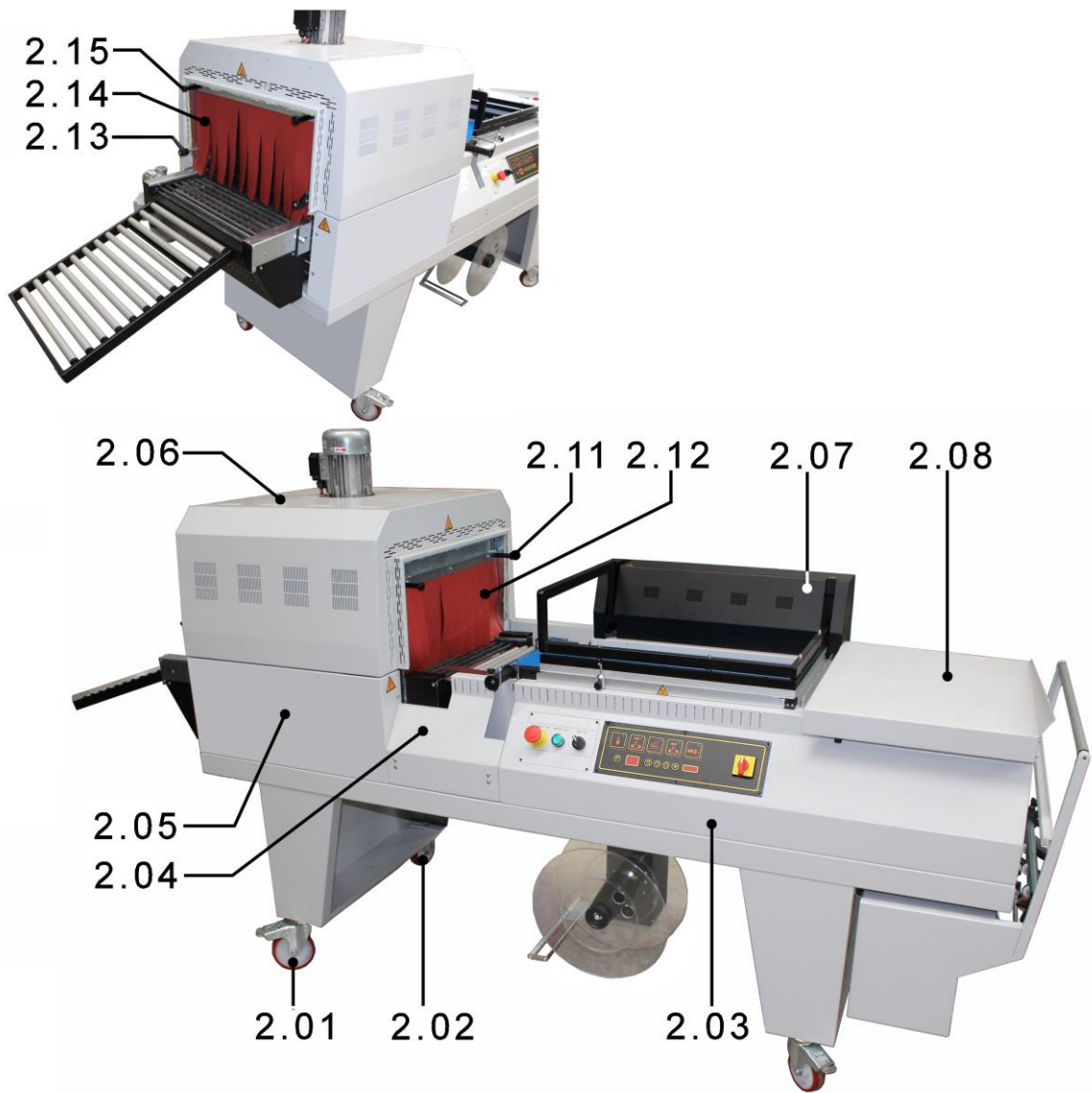
<b>ITEMS DESCRIPTION</b>	<b>SCHEME 1</b>
--------------------------	-----------------

<b>Pos.</b>	<b>Code</b>	<b>Description</b>
1.02	S0K00301	Front clamp kit
1.03	S0K00302	Rear clamp kit
1.04	S0K00306	Blade holder central clamp kit
1.06	S02A0310	Infill blocks kit
1.07	S02A0316	Infill holder channel kit
1.08	S02A0901	Front guard kit
1.09	S02A0903	Side guard kit
1.12	KR020001	Teflon-coated sealing blade



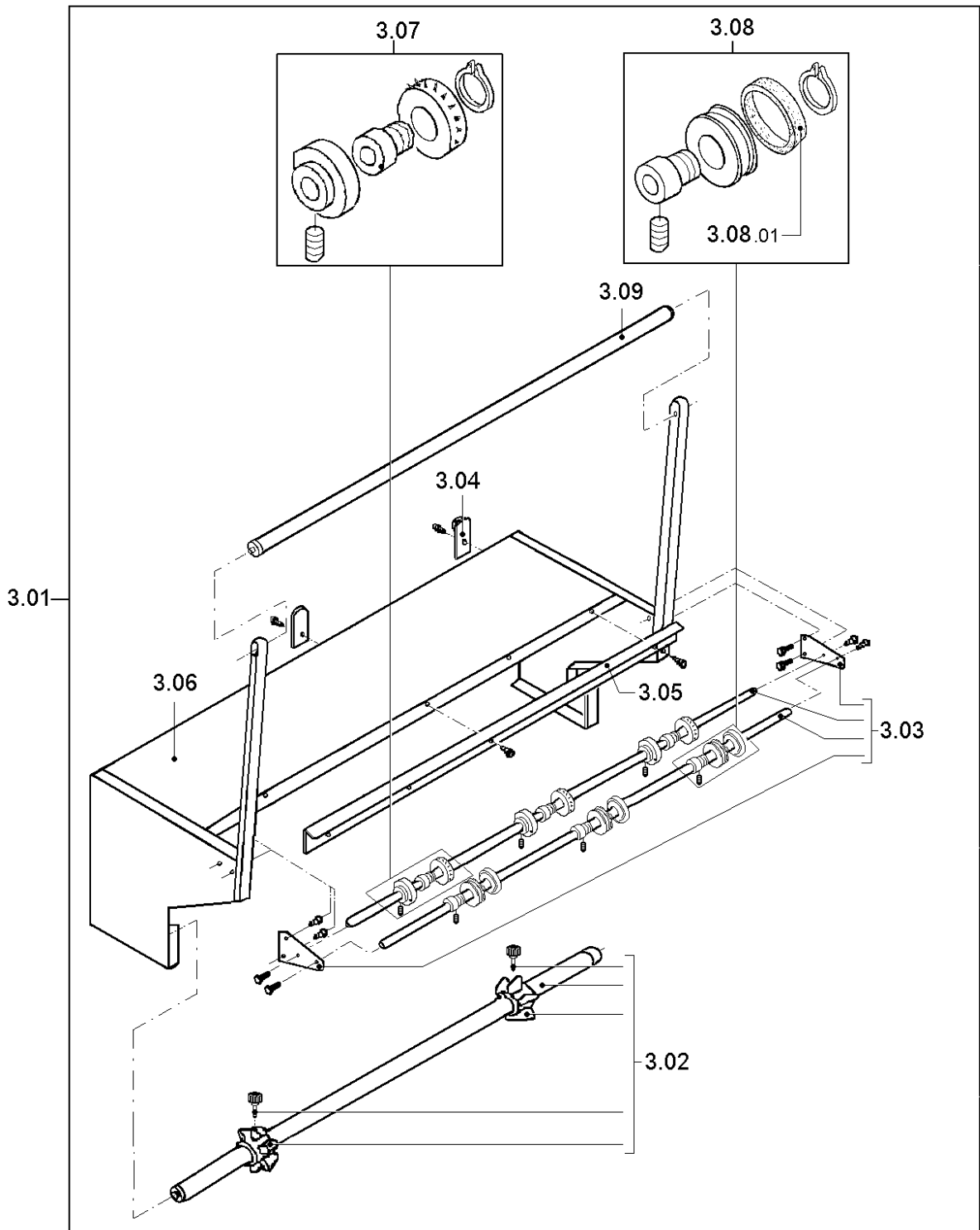
<b>ITEMS DESCRIPTION</b>	<b>SCHEME 2</b>
--------------------------	-----------------

<b>Pos.</b>	<b>Code</b>	<b>Description</b>
2.01	FM770511 FM770525	Wheel Ø100 Wheel Ø100 inox (for steel it version)
2.02	FM770512 FM770526	Wheel Ø100 with brake Wheel Ø100 with brake inox (for steel it version)
2.03	FM090928 FM096398	Fairing RAL7035B. Fairing steel it
2.04	FM095951 FM096399	Front carter RAL7035B. Front carter steel it
2.05	FM095955 FM096406	Front carter RAL7035B. Front carter steel it
2.06	FM095957 FM096408	Upper carter RAL7035B. Upper carter steel it
2.07	FM095518	Carter
2.08	PC02G004 PC02I001 PC02I002	Packaging plate kit RAL7035B. Packaging plate inox kit (optional) Packaging plate steel it kit
2.11	FM150105	Knob
2.12	P0K00510	Inlet curtain kit
2.13	FM510037	Fixed lever
2.14	P0K00511	Outlet curtain kit
2.15	FM150105	Knob
2.21	FM160072	Spacer
2.22	FM230012	Fan protection
2.23	FE435004	Thermocouple
2.24	FM290207	Curtain support
2.25	FM280070	Right air deflector
2.26	FM280071	Left air deflector



<b>ITEMS DESCRIPTION</b>	<b>SCHEME 3</b>
--------------------------	-----------------

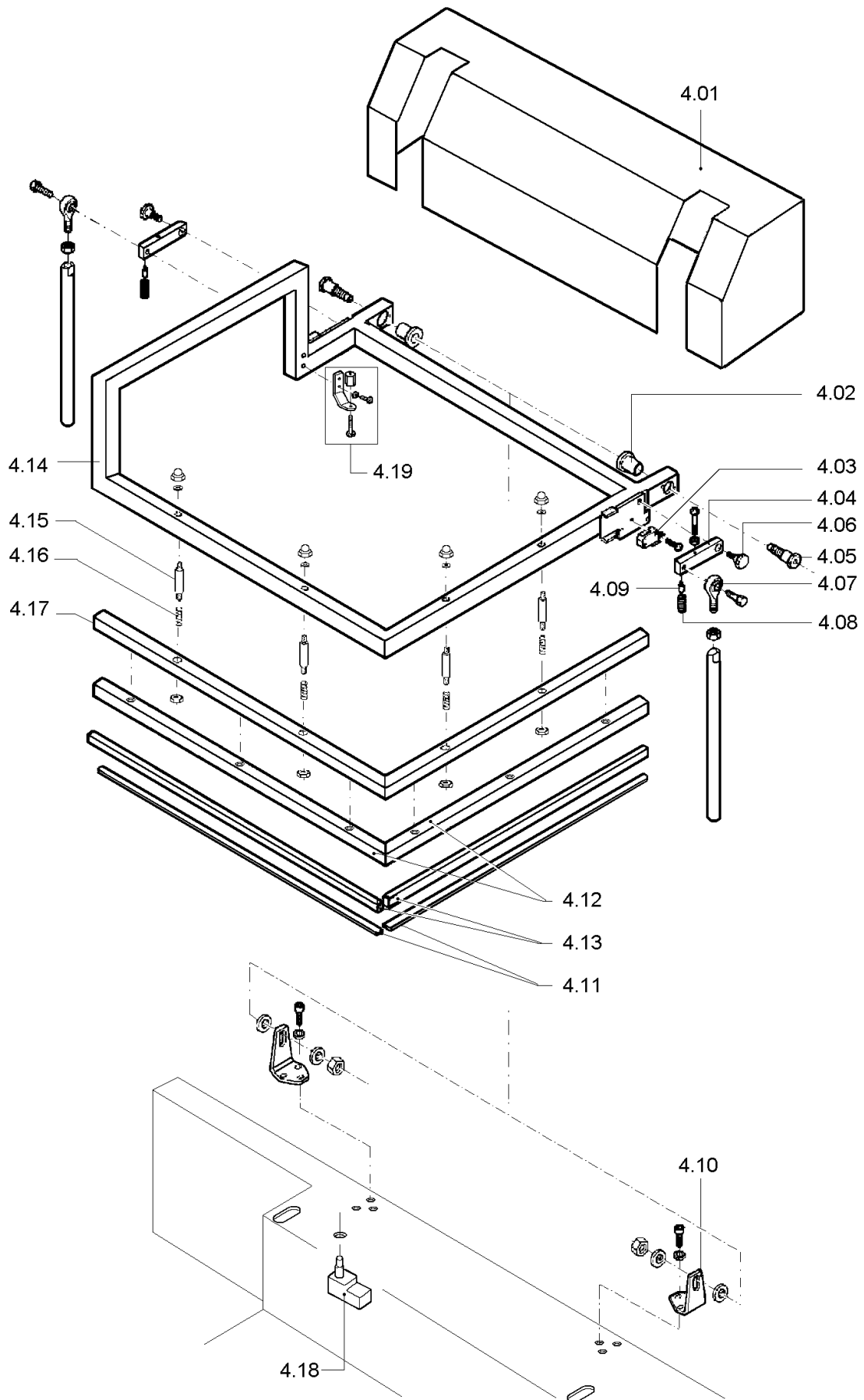
<b>Pos.</b>	<b>Code</b>	<b>Description</b>
3.01	PB17B003 PB17I003	Film roll support kit RAL7035B. Film roll support kit steel it
3.02	S08A0602	Film roll tube kit
3.03	S08A0603	Microperforator rods kit
3.04	FM660002	Wheeled trolley
3.05	FM220504	Guide corner
3.06	FM090884 FM096402	Film roll support RAL7035B. Film roll support steel it
3.07	S03A0605	Microperforator with needles kit
3.08	S03A0606	Slotted microperforator kit
3.08.01	S0K00610	Rubber rings kit for wheel (10 pcs)
3.09	FM710315	Film drive roller



**ITEMS DESCRIPTION****SCHEME 4**

<b>Pos.</b>	<b>Code</b>	<b>Description</b>
4.01	FM095518 FM096413	Case RAL9005B. Case steel it
4.02	FM540007	Bush
4.03	FE220133	Microswitch
4.04	FM060024	Security lever
4.05	S0K01002	Hood rotation right pin kit
4.06	FM200051	Pin
4.07	FM640002	Rod end
4.08	FM170101	Spring
4.09	FM160055	Lever blocking device
4.10	FM290101 FM291272	Hood support RAL9005B. Hood support steel it
4.11	KR020002	Teflon kit
4.12	S02A0405	Upper rubber holder channels kit
4.13	FM350023	White silicone rubber Lg.1105
4.14	FM300017 FM300399	Frame RAL9005B. Frame steel it
4.15	FM200071	Spacer
4.16	FM170117	Spring
4.17	FM290190 FM291271	Support RAL9005B. Support steel it
4.18	FE220136	Microswitch
4.19	S0K00412	Microswitch screw kit



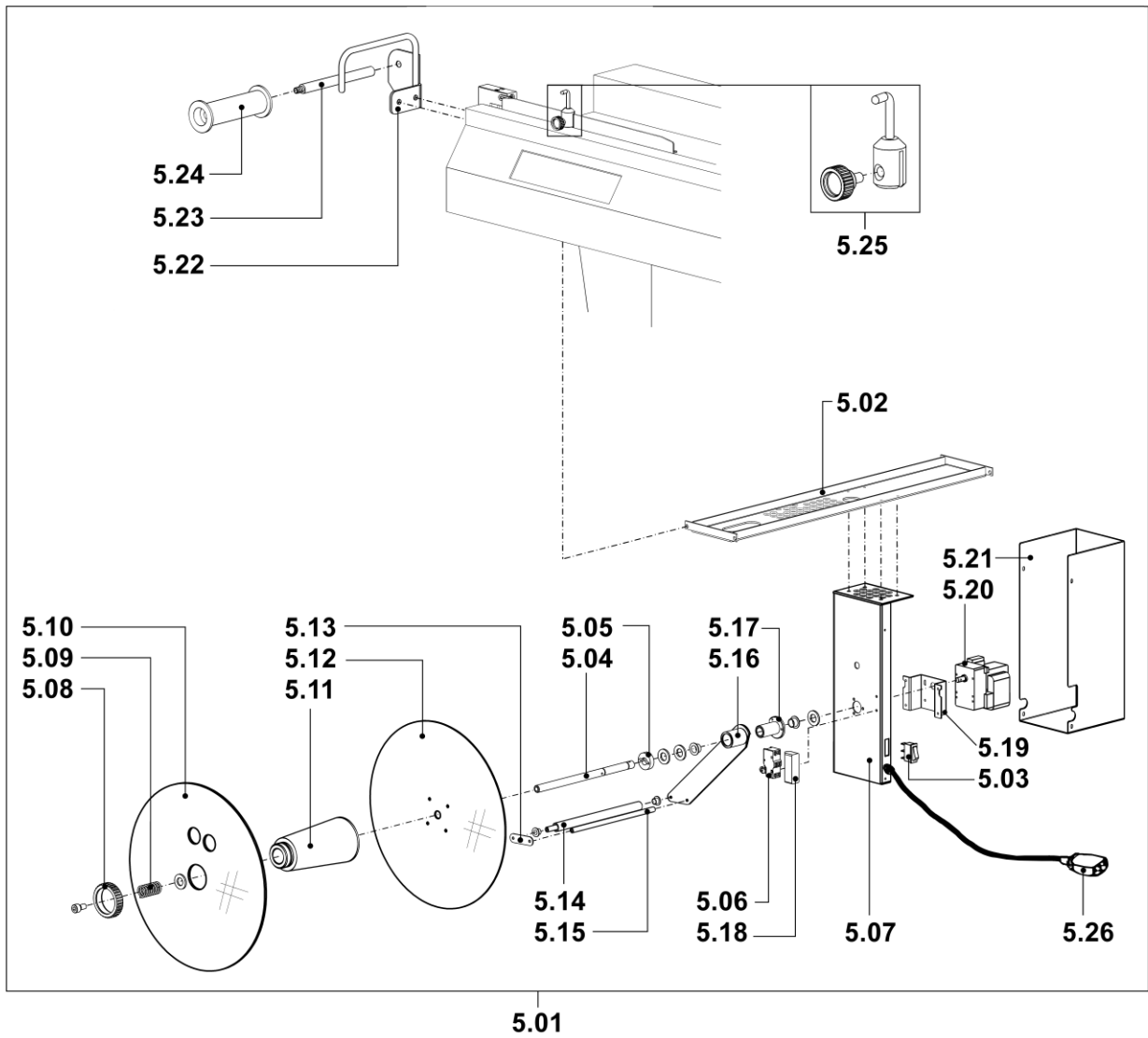


**ITEMS DESCRIPTION**
**SCHEME 5**

Old rewinder: valid up to s.n. **xxxxxx**

Pos.	Code	Description
5.01	AV170001	Rewinder group
	<b>No code</b>	Rewinder group steel it
5.02	FM300211	Crosspiece RAL9005B.
	<b>FM300398</b>	Crosspiece steel it
5.03	FE190032	Switch
5.04	FM010041	Shaft
5.05	FM160111	Washer
5.06	FE220105	Microswitch
5.07	FM290175	Rewinder support RAL9005B.
	<b>FM291277</b>	Rewinder support steel it
5.08	FM160104	Ring nut
5.09	FM170161	Spring
5.10	FM120040	Movable flange
5.11	FM250128	Hub
5.12	FM120041	Fixed flange
5.13	FM280326	Plate
5.14	FM250074	Roller
5.15	FM030063	Rod
5.16	FM060027	Lever
5.17	FM290172	Lever support
5.18	FE220101	Microswitch guard
5.19	FM290107	Gearmotor support
5.20	FE250015	Gearmotor
5.21	FM095138	Case RAL9005B.
	<b>FM096416</b>	Case steel it
5.22	FM290196	Film transmission support
5.23	FM200069	Pin
5.24	FM250049	Transmission roller
5.25	S0K00407	Film guide kit
5.26	FE310120	Cable 3x0,75 lg.1500

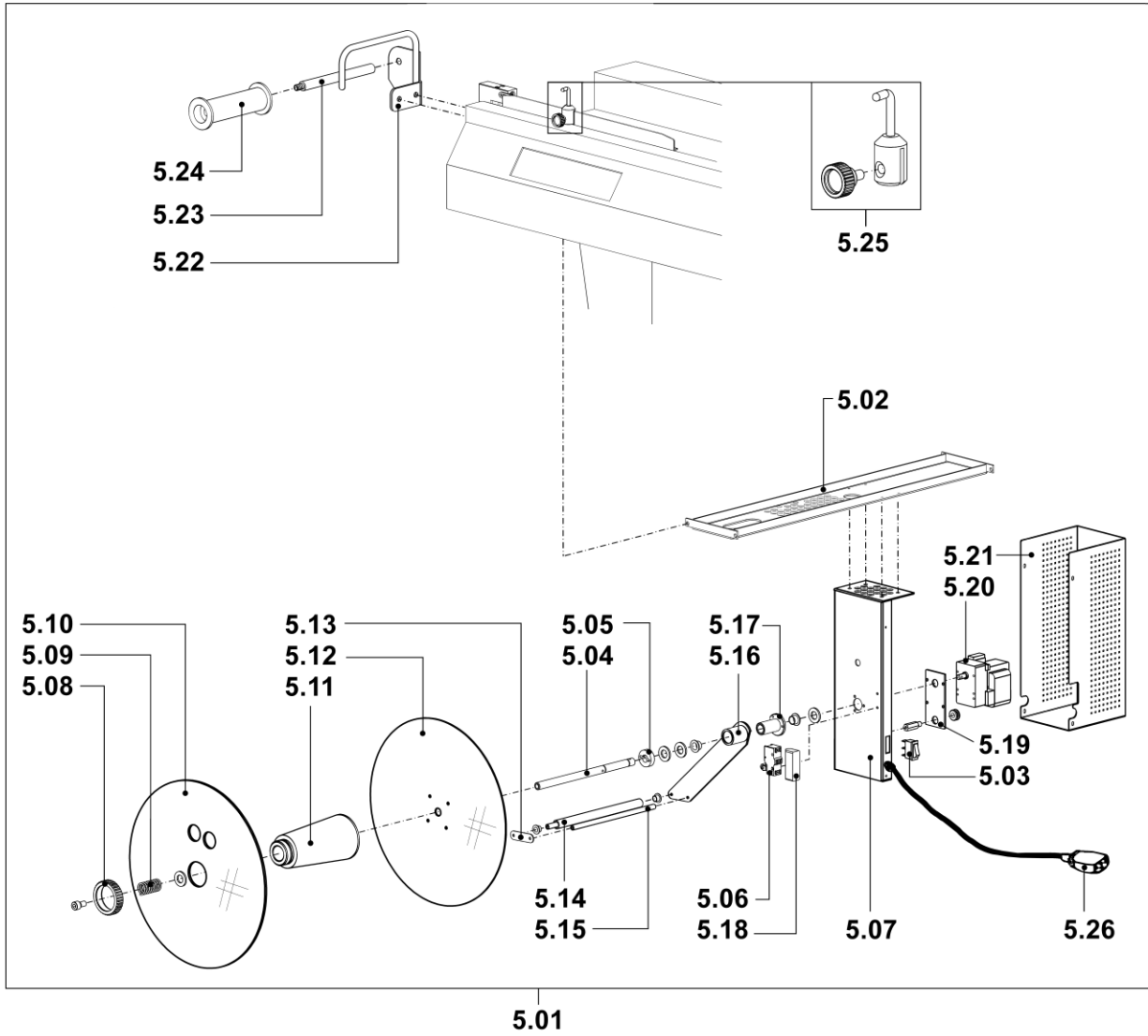
Old rewinder: valid up to s.n. **xxxxxxx**



**ITEMS DESCRIPTION****SCHEME 5.1****New rewinder:** valid from s.n. **XXXXXX**

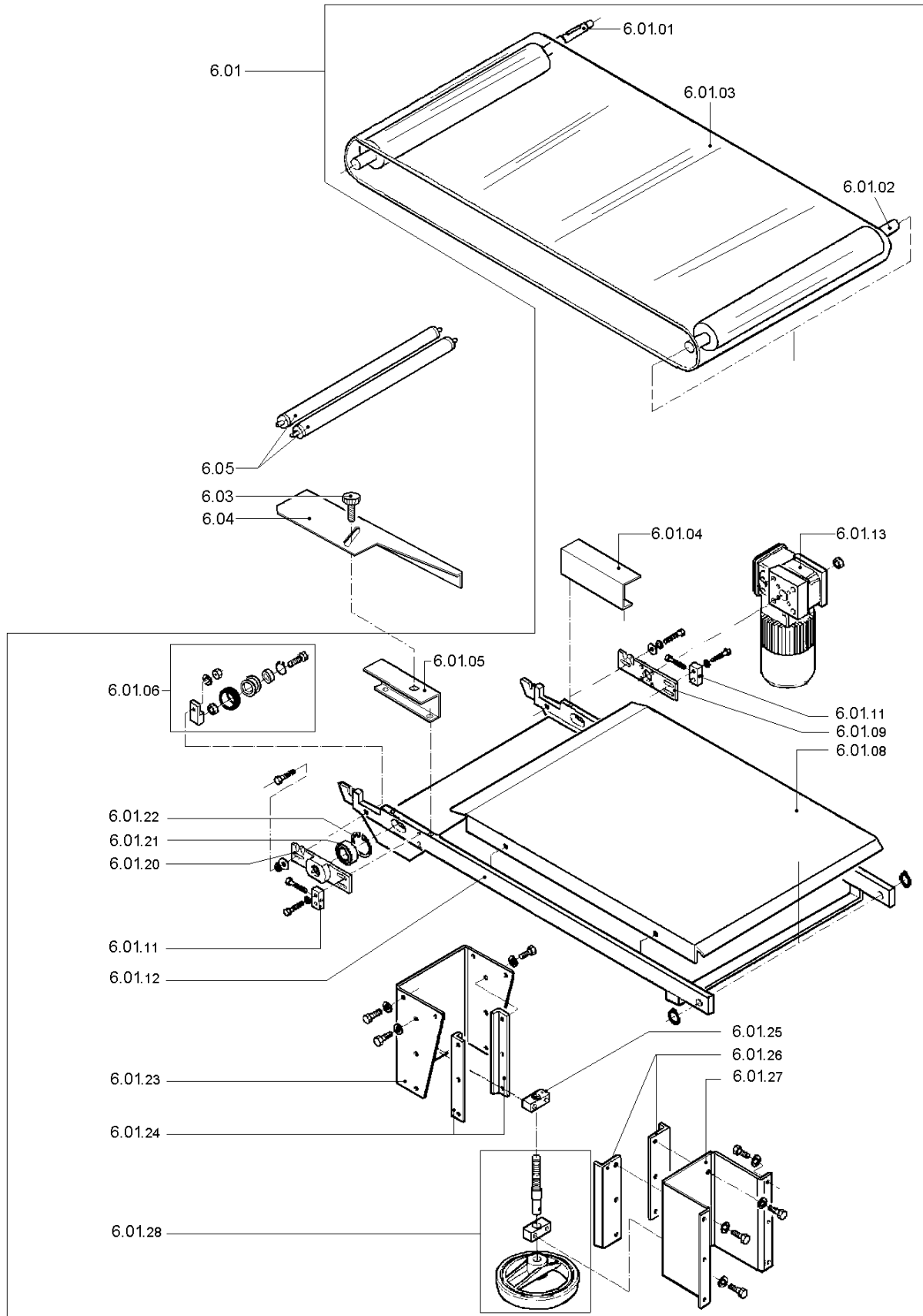
<b>Pos.</b>	<b>Code</b>	<b>Description</b>
5.01	AV170001	Rewinder group
5.02	FM300211	Crosspiece RAL9005B.
5.03	FE190032	Switch
5.04	FM010001	Shaft
5.05	FM160111	Washer
5.06	FE220105	Microswitch
5.07	FM090211	Motor case
5.08	FM160104	Ring nut
5.09	FM170161	Spring
5.10	FM120040	Movable flange
5.11	FM250128	Hub
5.12	FM120041	Fixed flange
5.13	FM280326	Plate
5.14	FM250074	Roller
5.15	FM030063	Rod
5.16	FM060027	Lever
5.17	FM290172	Lever support
5.18	FE220101	Microswitch guard
5.19	FM291403	Plate
5.20	FE250015	Gearmotor
5.21	FM096519	Case
5.22	FM290196	Film transmission support
5.23	FM200069	Pin
5.24	FM250049	Transmission roller
5.25	SOK00407	Film guide kit
5.26	FE310120	Cable 3x0,75 lg.1500

New rewinder: valid from s.n. **XXXXXX**



**ITEMS DESCRIPTION**
**SCHEME 6**

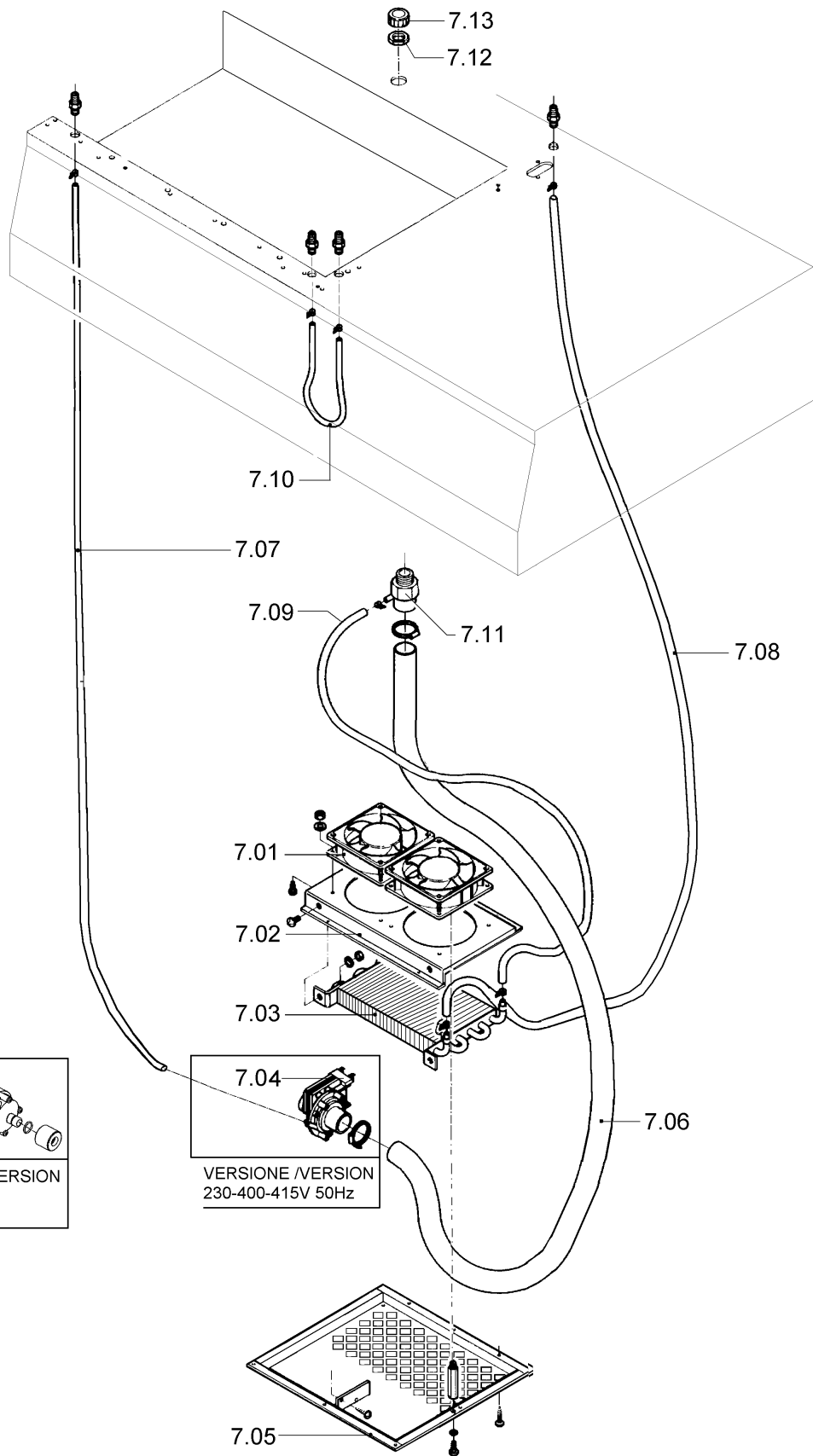
<b>Pos.</b>	<b>Code</b>	<b>Description</b>
6.01	NT170001	Transport belt kit
	<b>NT17I001</b>	Transport belt kit steel it
6.01.01	S0200023	Driving roller kit
6.01.02	S0200022	Transmission roller kit
6.01.03	FM710108	Conveyor belt (standard)
	FM710103	Food conveyor (optional)
6.01.04	FM281199	Rear square
6.01.05	FM281198	Front square
6.01.06	KR080002	Transmission roller kit.
6.01.08	FM090401	Sliding plane
6.01.09	FM280315	Gearmotor support plate
6.01.11	FM040008	Tensioning brake
6.01.12	FM300138	Belt frame RAL9005B.
	<b>FM300395</b>	Belt frame steel it
6.01.13	FE250043	Gearmotor
6.01.20	FM290281	Front support
6.01.21	FM610022	Bearing
6.01.22	FM520058	Seeger ring
6.01.23	FM290147	Support RAL9005B.
	<b>FM291269</b>	Support steel it
6.01.24	FM140019	Female guide support
6.01.25	FM040006	Adjusting brake
6.01.26	FM140020	Male guide support
6.01.27	FM290123	Support RAL9005B.
	<b>FM291270</b>	Support steel it
6.01.28	P02G0013	Handwheel group
6.03	FM510029	Knob
6.04	FM095058	Product guide
6.05	FM710327	Transmission roller



<b>ITEMS DESCRIPTION</b>	<b>SCHEME 7</b>
--------------------------	-----------------

<b>Pos.</b>	<b>Code</b>	<b>Description</b>
7.01	FE260020	Fan
7.02	FM290171 FM291276	Support RAL9005B. Support steel it
7.03	FM400001	Cooling system battery
7.04	S0K02000 S0K02002 S0K02004	Electropump kit (for 230-400-415V 50Hz) Electropump kit (for 208V 60 Hz) Electropump kit (for 400V 50/60Hz)
7.05	FM092001 FM096415	Base plane RAL9005B. Base plane steel it
7.06	FM250521	Tank tube Lg.400
7.07	FM250555	Cooling plant tube Lg.800
7.08	FM250551	Cooling plant tube Lg.400
7.09	FM250562	Cooling plant tube Lg.550
7.10	FM250551	Cooling plant tube Lg.400
7.11	FM160102	Cooling plant filler
7.12	FM160103	Lock nut
7.13	FM510302	Cap





7.04

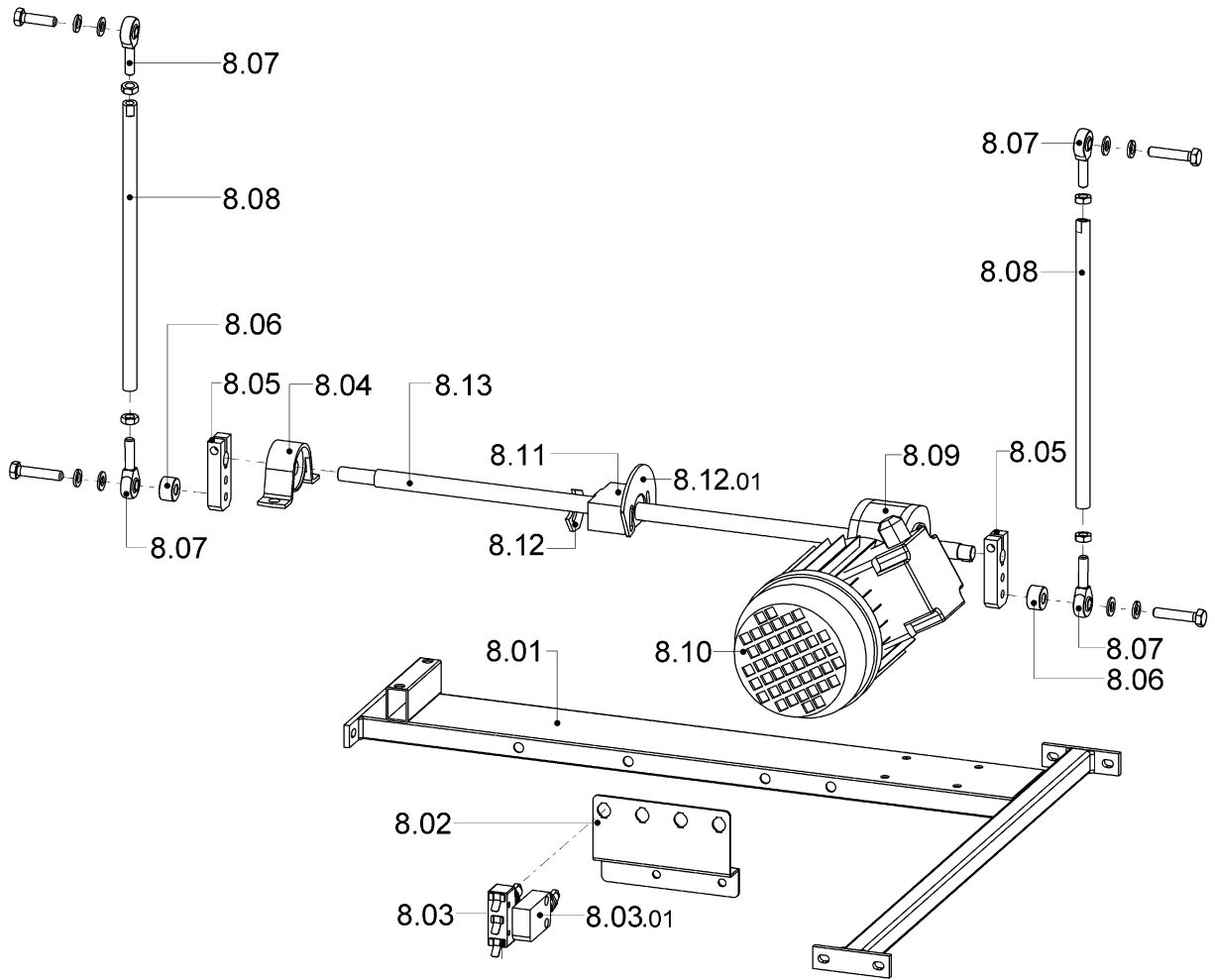
VERSIONE / VERSION  
208V 60Hz  
400V 50/60Hz

7.04

VERSIONE /VERSION  
230-400-415V 50Hz

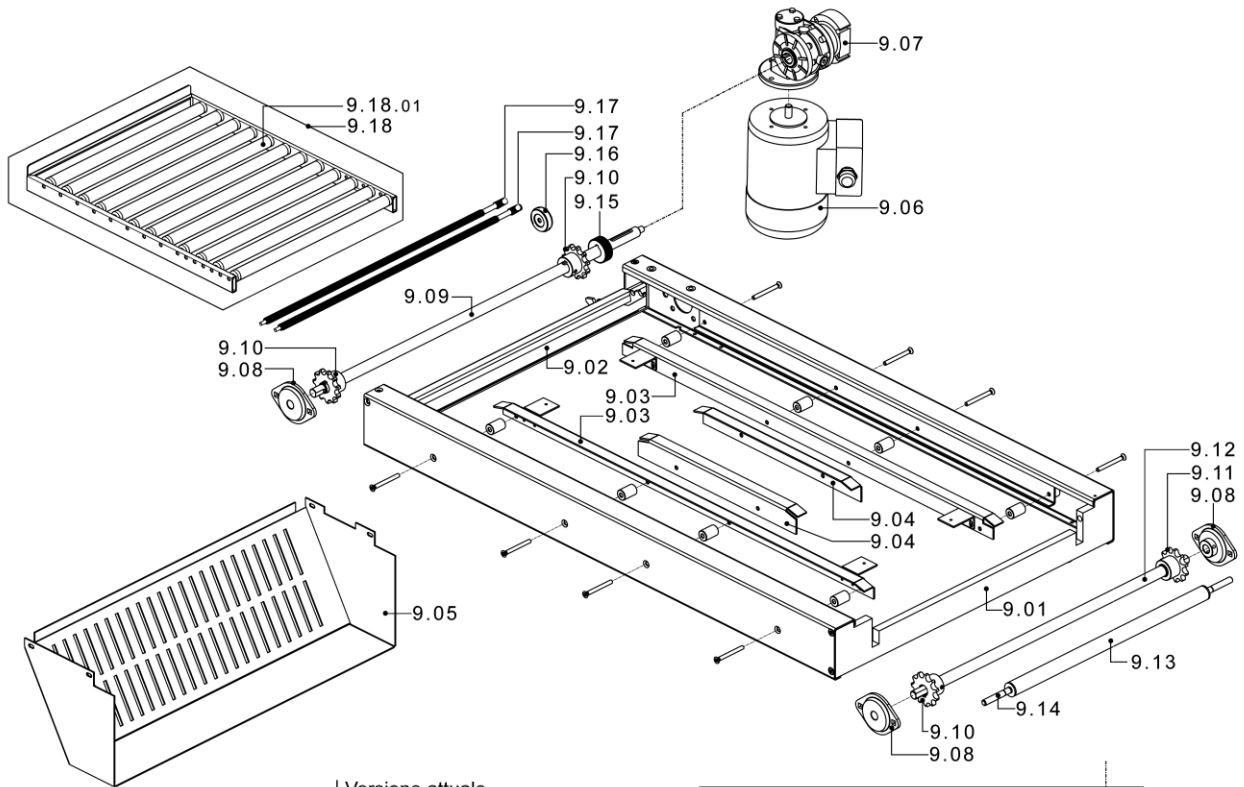
**ITEMS DESCRIPTION****SCHEME 8**

<b>Pos.</b>	<b>Code</b>	<b>Description</b>
8.01	FM300023 FM300400	Frame RAL9005B. Frame steel it
8.02	FM290138	Microswitch support
8.03	FE220135	Microswitch
8.03.01	FE220251	Microswitch
8.04	FM610709	NSK support
8.05	FM060020	Handle
8.06	FM160031	Spacer
8.07	FM640002	Rod end
8.08	FM060028	Connecting rod
8.09	FM760006 FM760005	Reduction gear 230-400V 50Hz Reduction gear 208-220 60Hz
8.10	FE245004 FE245006	Motor 230-400V 50Hz Motor 208-220V 60Hz
8.11	FM290223	Cams support
8.12	FM070024	Cam
8.12.01	FM070010	Cam
8.13	FM010027	Shaft



**ITEMS DESCRIPTION**
**SCHEME 9**

<b>Pos.</b>	<b>Code</b>	<b>Description</b>
9.01	FM300157 FM300397	Right crosspiece RAL9005B Right crosspiece steel it
9.02	FM300197 FM300396	Left belt crosspiece RAL9005. Left belt crosspiece steel it
9.03	FM140073	Sliding guide
9.04	FM140035	Sliding roll guide
9.05	FM095095 FM096411	Chain case RAL9005B. Chain case steel it
9.06	FE240080	Motor H56 kW0,09 B14
9.07	FM760023	RMI28 1-40 Reduction gear
9.08	FM610710	Support
9.09	FM010029	Motor shaft
9.10	KR090023	Pinion kit
9.11	KR090011	Idle pinion kit
9.12	FM010028	Countershaft
9.13	FM250046	Transmission roller
9.14	FM200089	Roller pin
9.15	FM250027	Belt motor roll
9.16	KR090025	Roll with gaskets kit
9.17	AS250026	Outfeed roll
9.18	RU020000 RU020003 RU020005	Roller table 40x50 RAL9005B. Stainless steel roller table 40x50 40x50 Roller plate steel it
9.18.01	FM710305	Idle roll
9.19	FM250005	Transmission roller
9.20	FM010002	Transmission shaft
9.21	KR170004	Countershaft pinion kit
9.22	FM010002	Transmission shaft

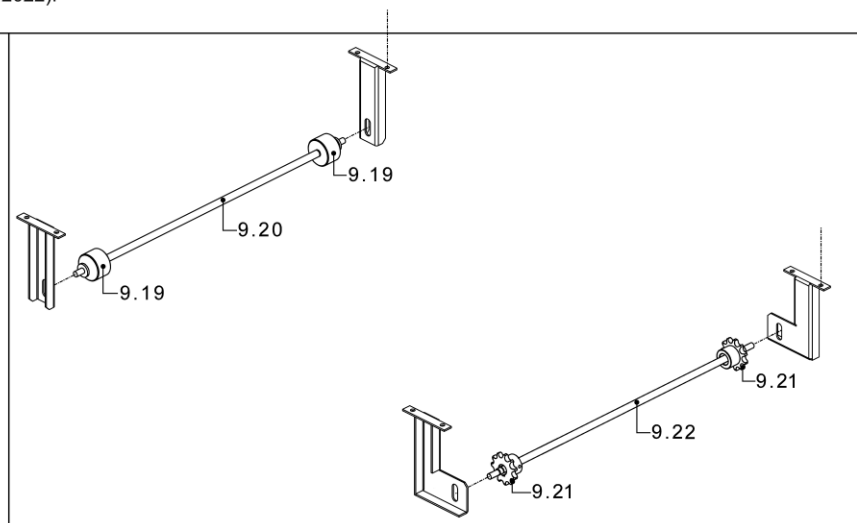
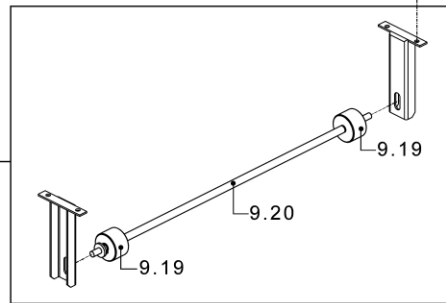


Versione attuale.  
 Valida dalla matr. 2237650 (06.2022).  
 Compresa la 2237525.

Current version.  
 Valid from s.n. 2237650 (06.2022).  
 Including 2237525.

Versione precedente.  
 Valida fino alla matricola 2237649 (06.2022).  
 Esclusa la 2237525.

Previous version.  
 Valid up to s.n. 2237649 (06.2022).  
 Excluding 2237525.

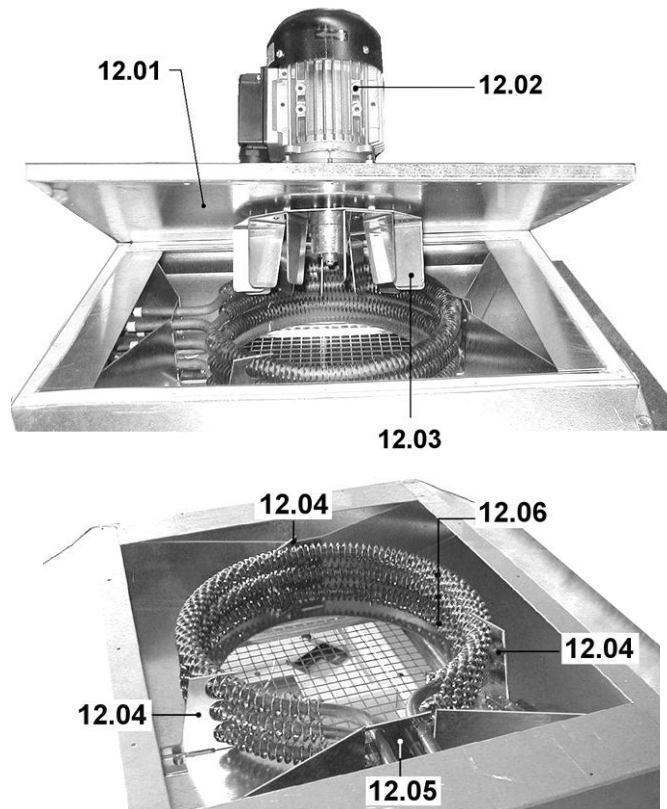
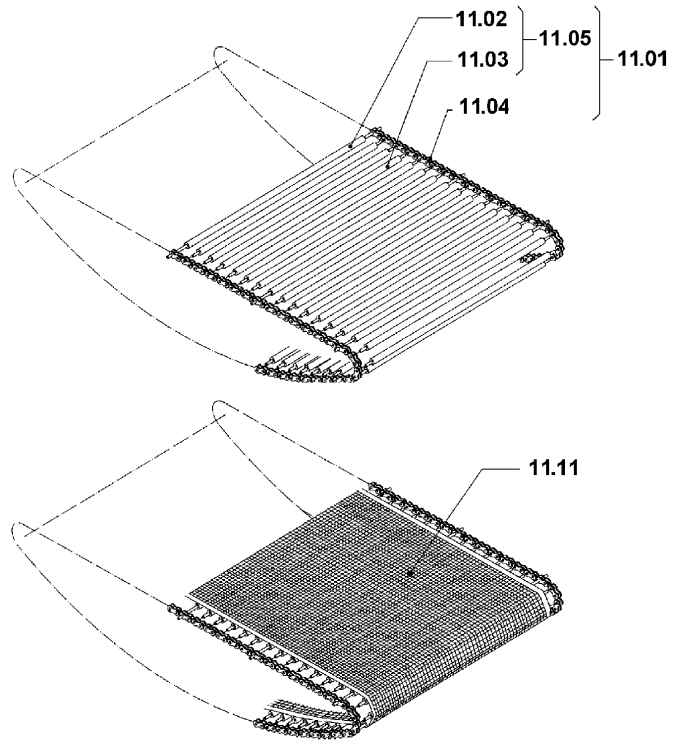


<b>ITEMS DESCRIPTION</b>	<b>SCHEME 11</b>
--------------------------	------------------

<b>Pos.</b>	<b>Code</b>	<b>Description</b>
11.01	CT400001	Chain pre-assembly (valid from s.n. 2237650 dated 06.2022. Including 2237525)
	CT170002	Chain pre-assembly (valid up to s.n. 2237649 dated 06.2022. Excluding 2237525)
11.02	AS250052	Chain fastening roll
11.03	AS250047	Roll for chain
11.04	FM100007	Chain with holed pins (valid from s.n. 2237650 dated 06.2022. Including 2237525)
	FM100017	Chain with holed pins (valid up to s.n. 2237649 dated 06.2022. Excluding 2237525)
11.05	KR170023	Rollers kit
11.11	FM710013	Teflon conveyor belt (optional) (valid from s.n. 2237650 dated 06.2022. Including 2237525)
	FM710016	Teflon conveyor belt (optional) (valid up to s.n. 2237649 dated 06.2022. Excluding 2237525)

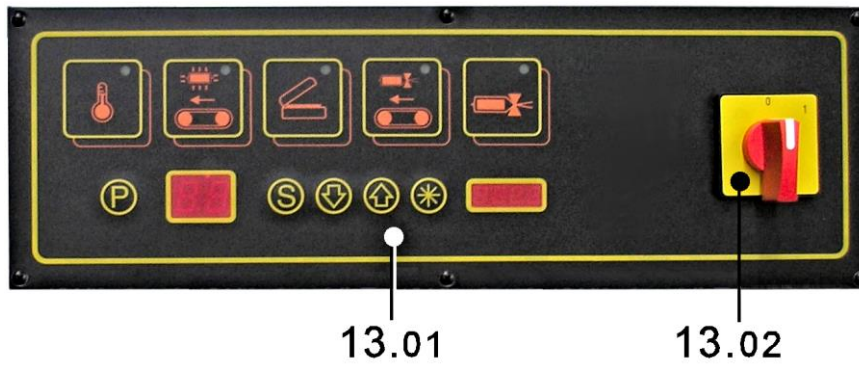
<b>ITEMS DESCRIPTION</b>	<b>SCHEME 12</b>
--------------------------	------------------

<b>Pos.</b>	<b>Code</b>	<b>Description</b>
12.01	FM290119	Motor support plate
12.02	FE240070	Three-phase motor 230-400V
	FE240071	Three-phase motor 200-208V
12.03	FM410003	Fan
12.04	FM290149	Single resistor support
12.05	FM290150	Double resistor support
12.06	FE380015	Resistor 400V
	FE380020	Resistor 230V
	FE380019	Resistor 200-208V



**MACHINE DETAIL DRAWING**

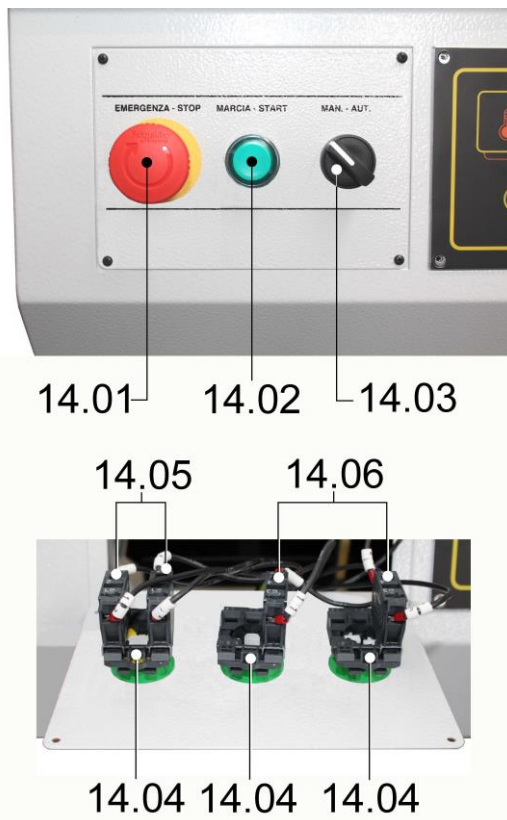
**SCHEME 13**



Pos.	Code	Description
13.01	S0190115	Panel + electronic board
13.02	FE080001	Switch 20A

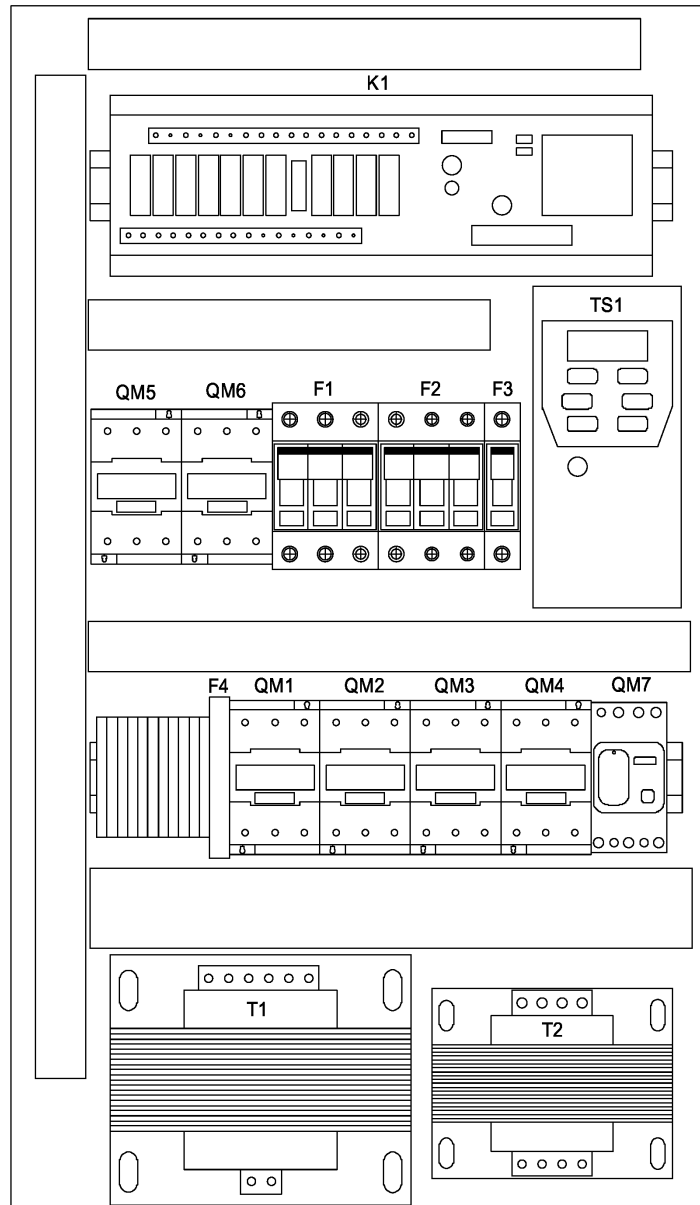
**MACHINE DETAIL DRAWING**

**SCHEME 14**



Pos.	Code	Description
14.01	FE340005	Emergency pushbutton
14.02	FE340001	Start button
14.03	FE085004	MAN-AUT selector
14.04	FE340501	Contacts holder
14.05	FE340506	"NC" contact
14.06	FE340505	"NO" contact





Pos.	Code	Description
F1	FE290456 FE290407 FE290408	Fuse 10.3X38 gG 10A (400V) Fuse 10.3X38 AM 16A (230V) Fuse 10.3X38 AM 20A (200-208V)
F2	FE290401	Fuse 10.3X38 AM 2A
F3	FE290401	Fuse 10.3X38 AM 2A
F4	FE290121	Fuse 5X20 T 2A
QM1	FE110615	Contactor LC1-D18B7
QM2	FE110602 FE110615	Contactor LC1-D09B7 (400V) Contactor LC1-D18B7 (200-208-230V)
QM3/4/5/6	FE110602	Contactor LC1-D09B7
QM7	FE370006	Relay 24VAC
K1	FE120353	Electronic control board
TS1	KR170001 KR170005	Inverter (Schneider) Inverter (Control Techniques)
T1	FE440613 FE440612	Transformer 2400VA (400V) Transformer 2400VA (200-208-230V)
T2	FE440026 FE440025	Transformer 400VA (400V) Transformer 400VA (200-208-230V)