



Minipack-torre S.p.A.
Via Provinciale, 54 - 24044 Dalmine (BG) - Italy
Tel. (035) 563525 – Fax (035) 564945
E-mail: info@minipack-torre.it
<http://www.minipack-torre.it>



Media Matic

Spare parts catalogue

(Valid from s.n. 1284 dated 01.2011 up to s.n. 1804366 dated 11.2018, and the same for 1804484, 1805048, 1805049, 1805050)

REV.03: modified colour from grey RAL7032 to grey RAL7035.



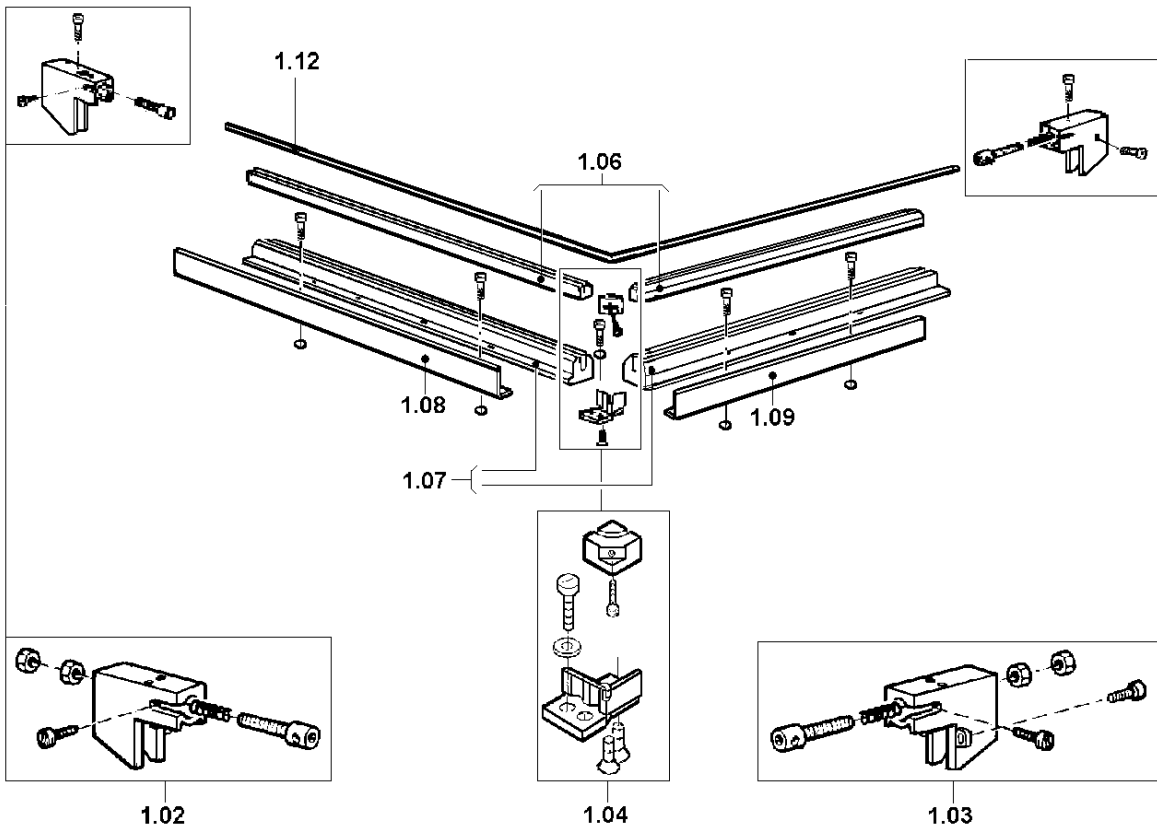
CAREFULLY READ THIS CATALOGUE BEFORE ORDERING ANY SPARE PART



DOC. N. FM112018
REV. 03
ED. 01.2019

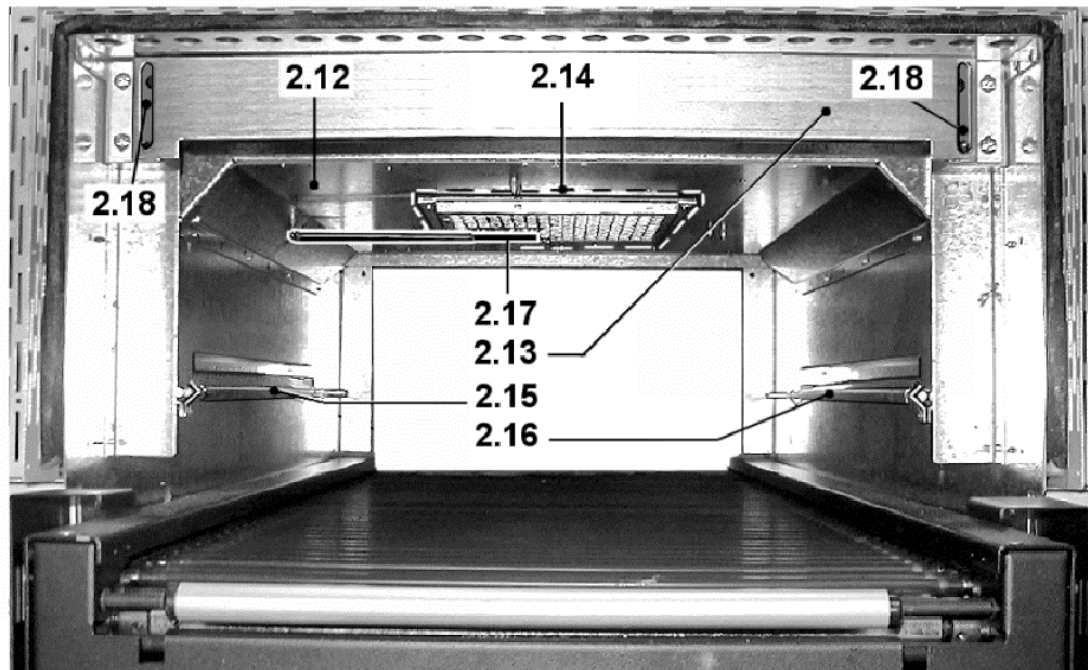
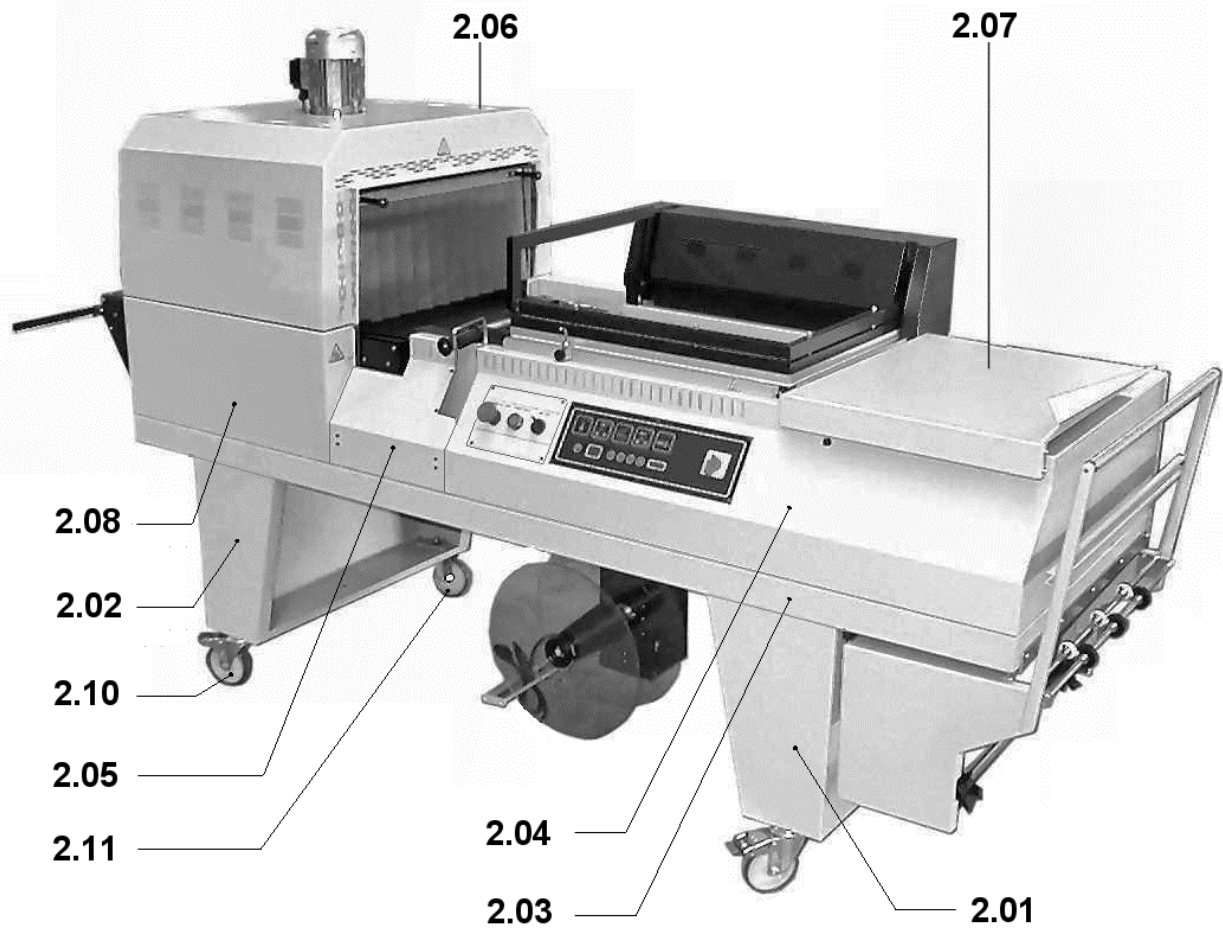
ITEMS DESCRIPTION	SCHEME 1
--------------------------	-----------------

Pos.	Code	Description
1.02	S0K00301	Front clamp kit
1.03	S0K00302	Rear clamp kit
1.04	S0K00306	Blade holder central clamp kit
1.06	S02A0310	Infill blocks kit
1.07	S02A0316	Infill holder channel kit
1.08	S02A0901	Front guard kit
1.09	S02A0903	Side guard kit
1.12	KR020001	Teflon-coated sealing blade



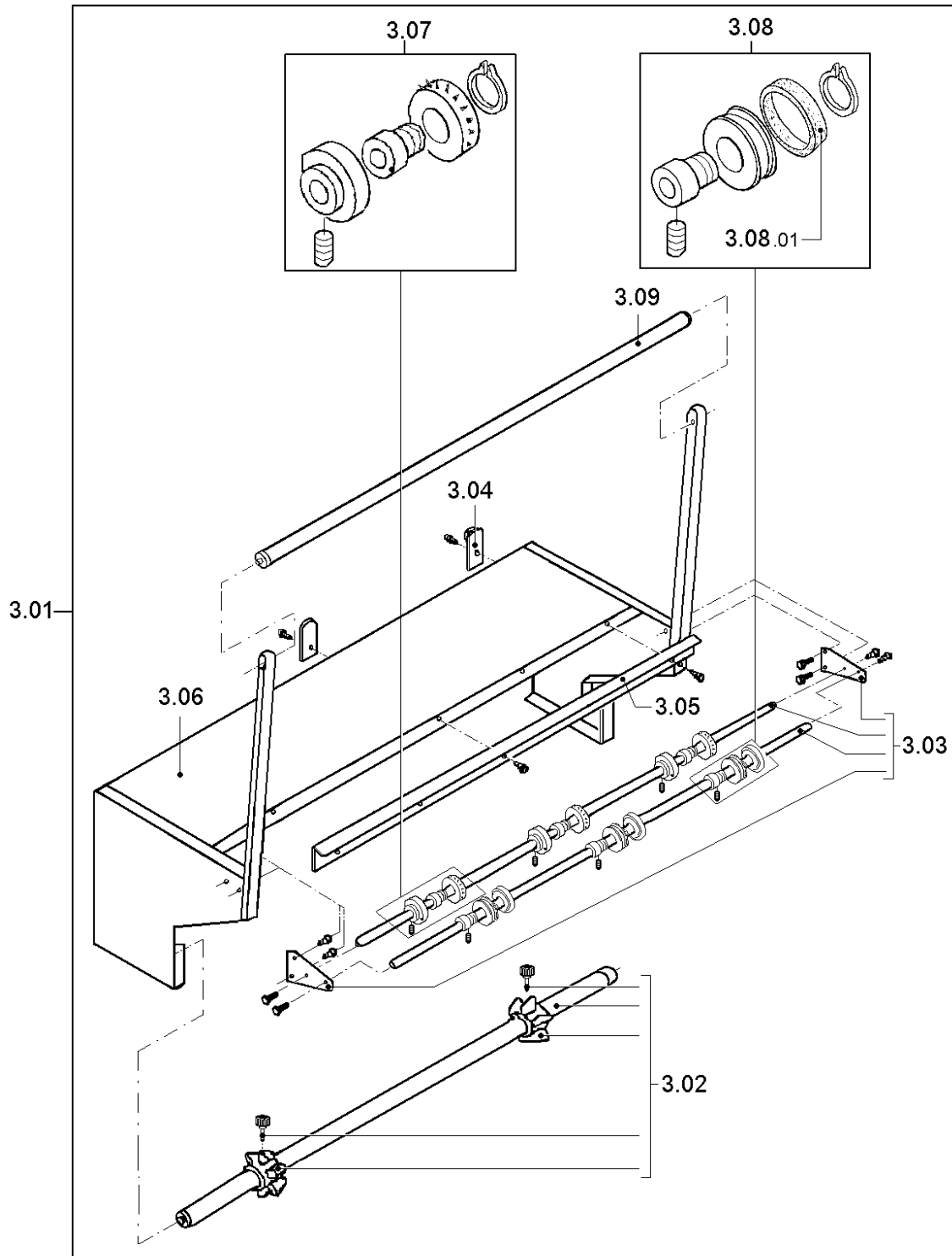
ITEMS DESCRIPTION	SCHEME 2
--------------------------	-----------------

Pos.	Code	Description
2.01	FM090955 FM096404	Right support RAL7035B. Right support steel it
2.02	FM090956 FM096405	Left support RAL7035B. Left support steel it
2.03	FM300267 FM300394	Frame fairing RAL7035B. Frame fairing steel it
2.04	FM090928 FM096398	Fairing RAL7035B. Fairing steel it
2.05	FM095951 FM096399	Front carter RAL7035B. Front carter steel it
2.06	FM095957 FM096408	Upper carter RAL7035B. Upper carter steel it
2.07	PC02G004 PC021001 PC021002	Packaging plate kit RAL7035B. Packaging plate inox kit (optional) Packaging plate steel it kit
2.08	FM095955 FM096406	Front carter RAL7035B. Front carter steel it
2.10	FM770511 FM770525	Wheel Ø100 Wheel Ø100 inox (for steel it version)
2.11	FM770512 FM770526	Wheel Ø100 with brake Wheel Ø100 with brake inox (for steel it version)
2.12	FM090523	Tunnel fairing
2.13	FM290207	Curtain support
2.14	FM230012	Fan protection
2.15	FM280070	Right air deflector
2.16	FM280071	Left air deflector
2.17	FE435004	Thermocouple
2.18	FM160072	Spacer



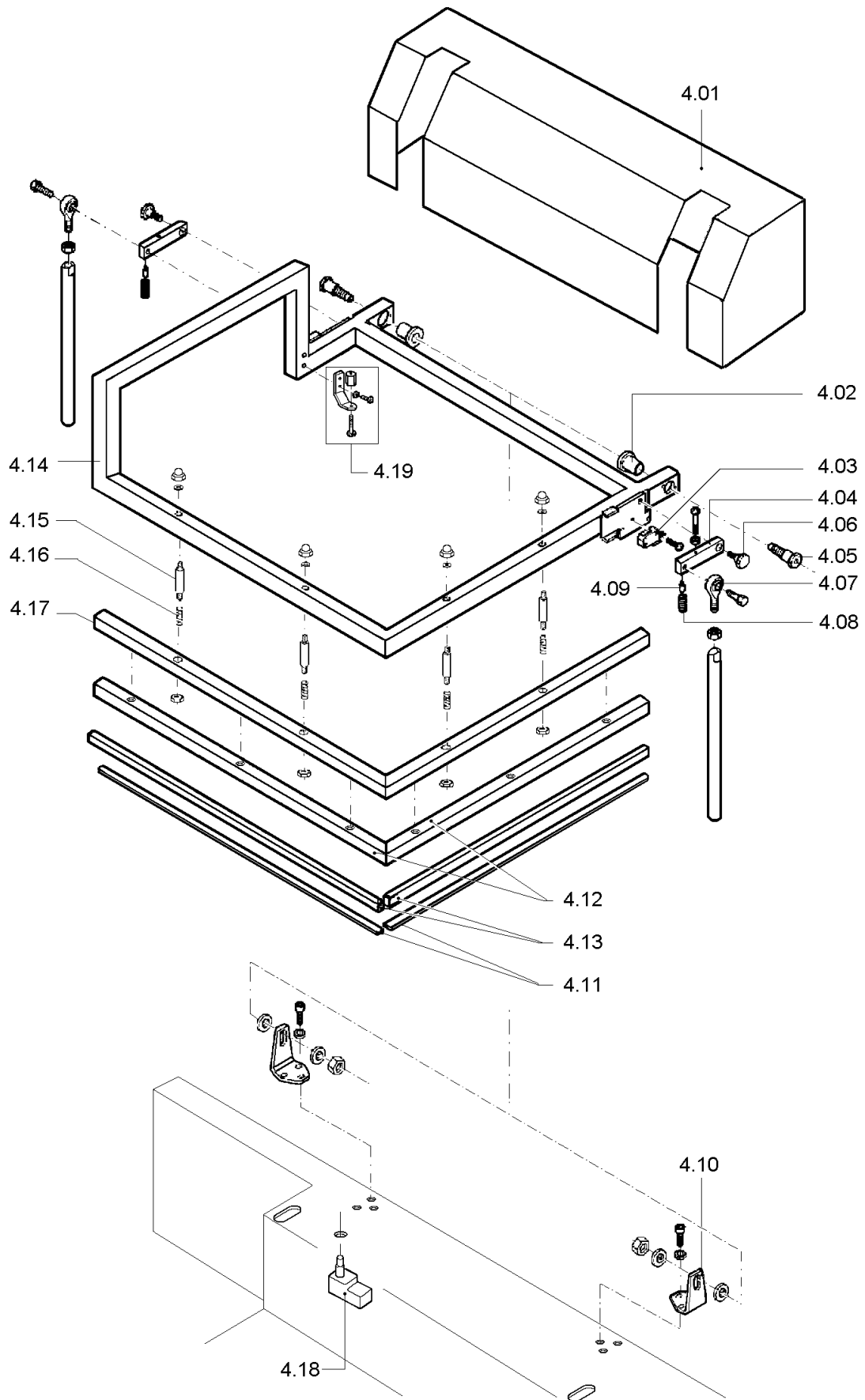
ITEMS DESCRIPTION	SCHEME 3
--------------------------	-----------------

Pos.	Code	Description
3.01	PB17B003 PB17I003	Film roll support kit RAL7035B. Film roll support kit steel it
3.02	S08A0602	Film roll tube kit
3.03	S08A0603	Microperforator rods kit
3.04	FM660002	Wheeled trolley
3.05	FM220504	Guide corner
3.06	FM090884 FM096402	Film roll support RAL7035B. Film roll support steel it
3.07	S03A0605	Microperforator with needles kit
3.08	S03A0606	Slotted microperforator kit
3.08.01	S0K00610	Rubber rings kit for wheel (10 pcs)
3.09	FM710315	Film drive roller



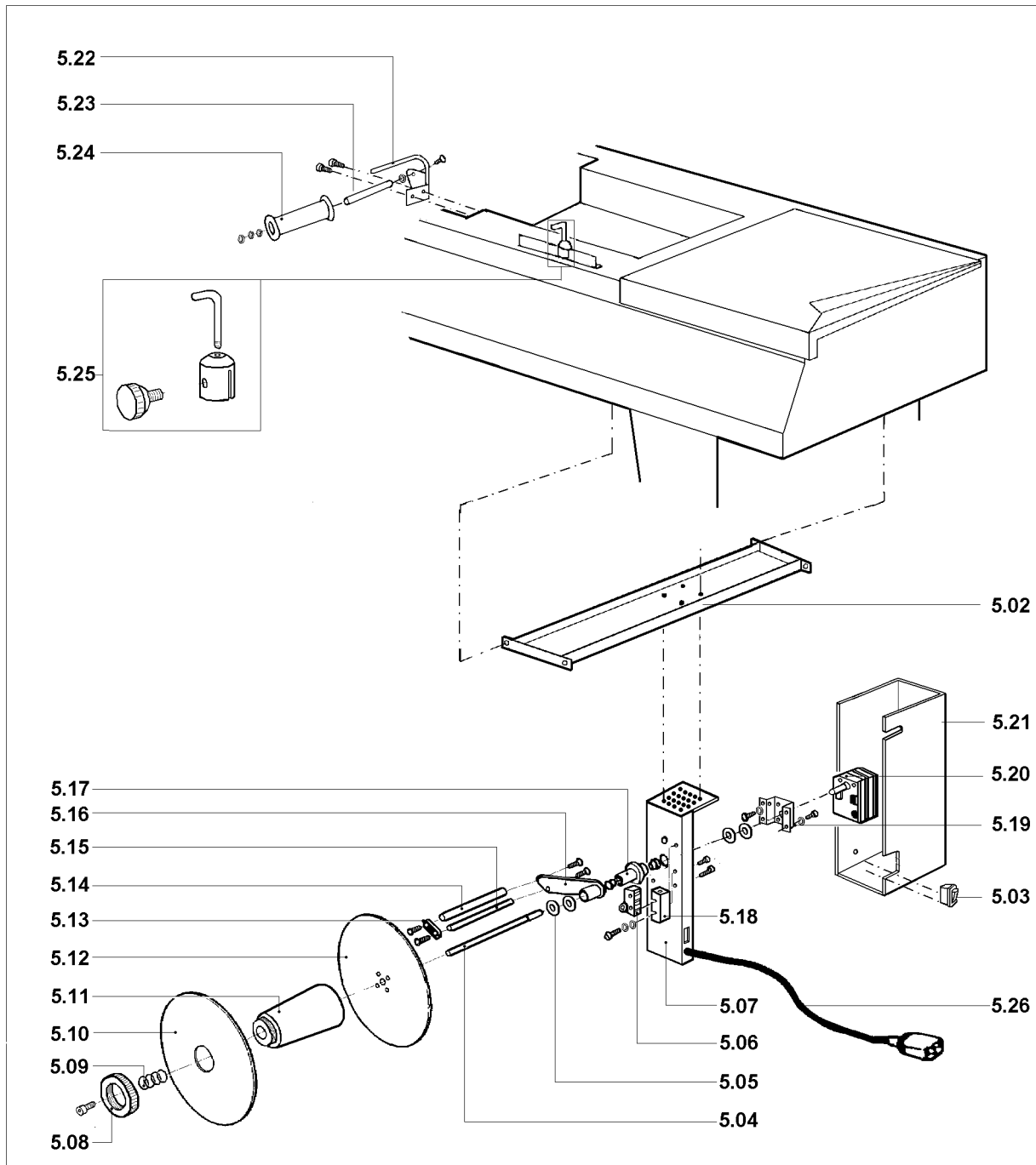
ITEMS DESCRIPTION**SCHEME 4**

Pos.	Code	Description
4.01	FM095518 FM096413	Case RAL9005B. Case steel it
4.02	FM540007	Bush
4.03	FE220133	Microswitch
4.04	FM060024	Security lever
4.05	S0K01002	Hood rotation right pin kit
4.06	FM200051	Pin
4.07	FM640002	Rod end
4.08	FM170101	Spring
4.09	FM160055	Lever blocking device
4.10	FM290101 FM291272	Hood support RAL9005B. Hood support steel it
4.11	KR020002	Teflon kit
4.12	S02A0405	Upper rubber holder channels kit
4.13	FM350023	White silicone rubber Lg.1105
4.14	FM300017 FM300399	Frame RAL9005B. Frame steel it
4.15	FM200071	Spacer
4.16	FM170117	Spring
4.17	FM290190 FM291271	Support RAL9005B. Support steel it
4.18	FE220136	Microswitch
4.19	S0K00412	Microswitch screw kit



ITEMS DESCRIPTION	SCHEME 5
--------------------------	-----------------

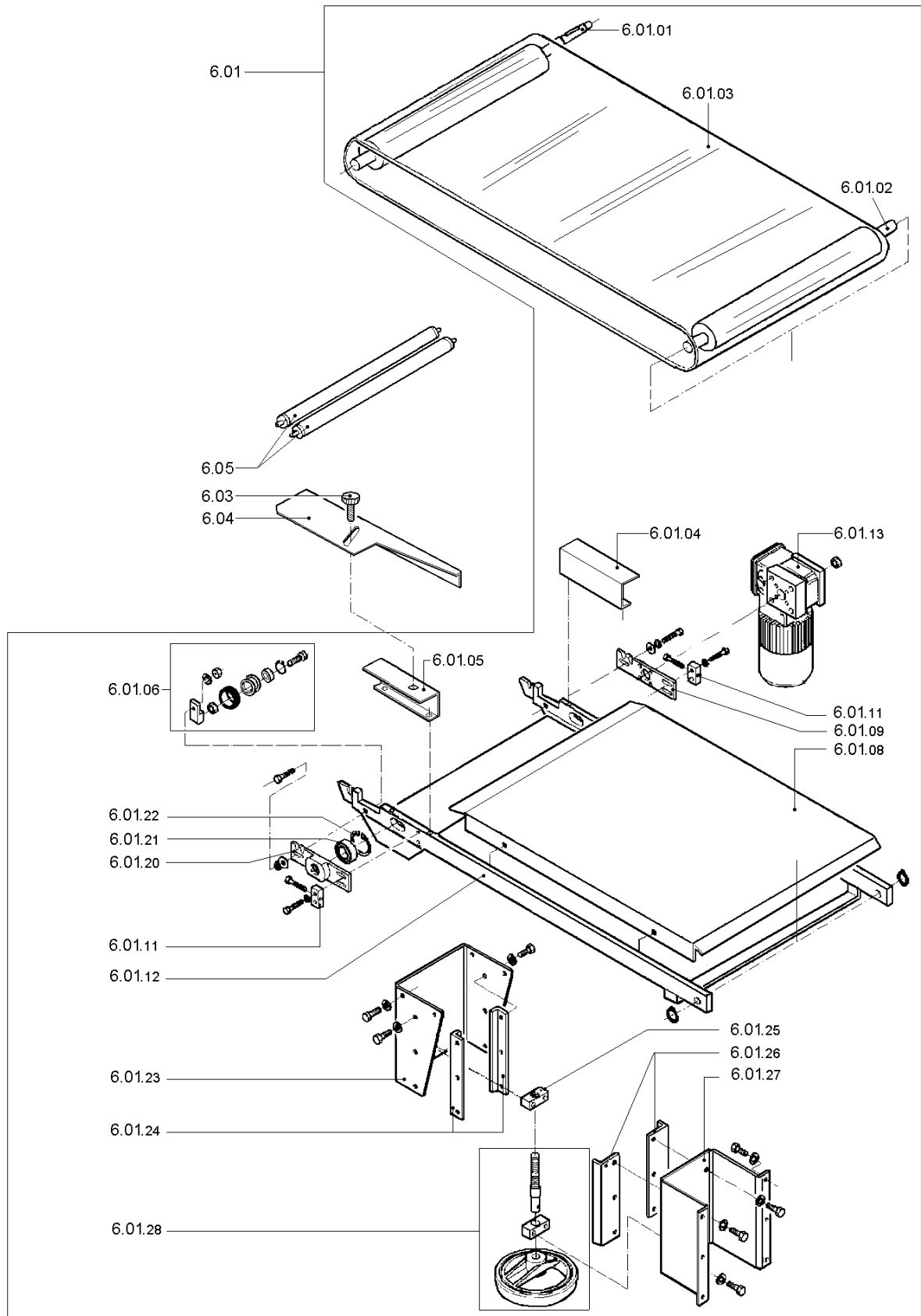
Pos.	Code	Description
5.01	AV170001 No code	Rewinder group Rewinder group steel it
5.02	FM300211 FM300398	Crosspiece RAL9005B. Crosspiece steel it
5.03	FE190032	Switch
5.04	FM010041	Film rewinder shaft
5.05	FM160111	Washer
5.06	FE220105	Microswitch
5.07	FM290175 FM291277	Rewinder support RAL9005B. Rewinder support steel it
5.08	FM160104	Ring nut
5.09	FM170161	Spring
5.10	FM120040	Movable flange
5.11	FM250128	Hub
5.12	FM120041	Fixed flange
5.13	FM280326	Plate
5.14	FM250074	Roller
5.15	FM030063	Rod
5.16	FM060027	Lever
5.17	FM290172	Lever support
5.18	FE220101	Microswitch guard
5.19	FM290107	Gearmotor support
5.20	FE250016	Gearmotor
5.21	FM095138 FM096416	Case RAL9005B. Case steel it
5.22	FM290196	Film transmission support
5.23	FM200069	Transmission roller pin
5.24	FM250049	Transmission roller
5.25	S0K00407	Film guide kit
5.26	FE310120	Cable 3x0,75 lg.1500



ITEMS DESCRIPTION

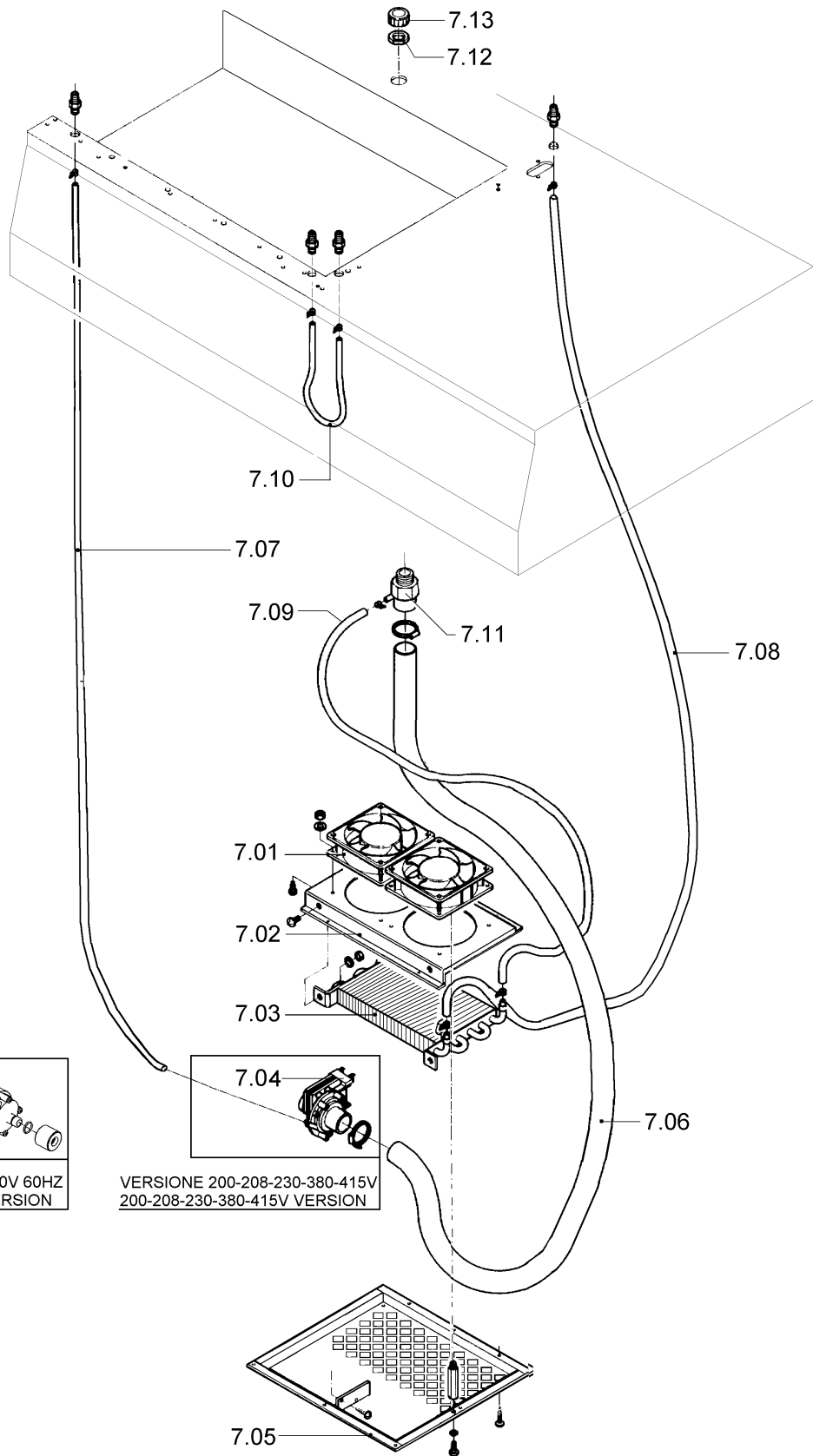
SCHEME 6

Pos.	Code	Description
6.01	NT170001	Transport belt kit
	NT171001	Transport belt kit steel it
6.01.01	S0200023	Driving roller kit
6.01.02	S0200022	Transmission roller kit
6.01.03	FM710108	Conveyor belt (standard)
	FM710103	Food conveyor (optional)
6.01.04	FM281199	Rear square
6.01.05	FM281198	Front square
6.01.06	KR080002	Transmission roller kit.
6.01.08	FM090401	Sliding plane
6.01.09	FM280315	Gearmotor support plate
6.01.11	FM040008	Tensioning brake
6.01.12	FM300138	Belt frame RAL9005B.
	FM300395	Belt frame steel it
6.01.13	FE250043	Gearmotor
6.01.20	FM290281	Front support
6.01.21	FM610022	Bearing
6.01.22	FM520058	Seeger ring
6.01.23	FM290147	Support RAL9005B.
	FM291269	Support steel it
6.01.24	FM140019	Female guide support
6.01.25	FM040006	Adjusting brake
6.01.26	FM140020	Male guide support
6.01.27	FM290123	Support RAL9005B.
	FM291270	Support steel it
6.01.28	P02G0013	Handwheel group
6.03	FM510029	Knob
6.04	FM095058	Product guide
6.05	FM710327	Transmission roller



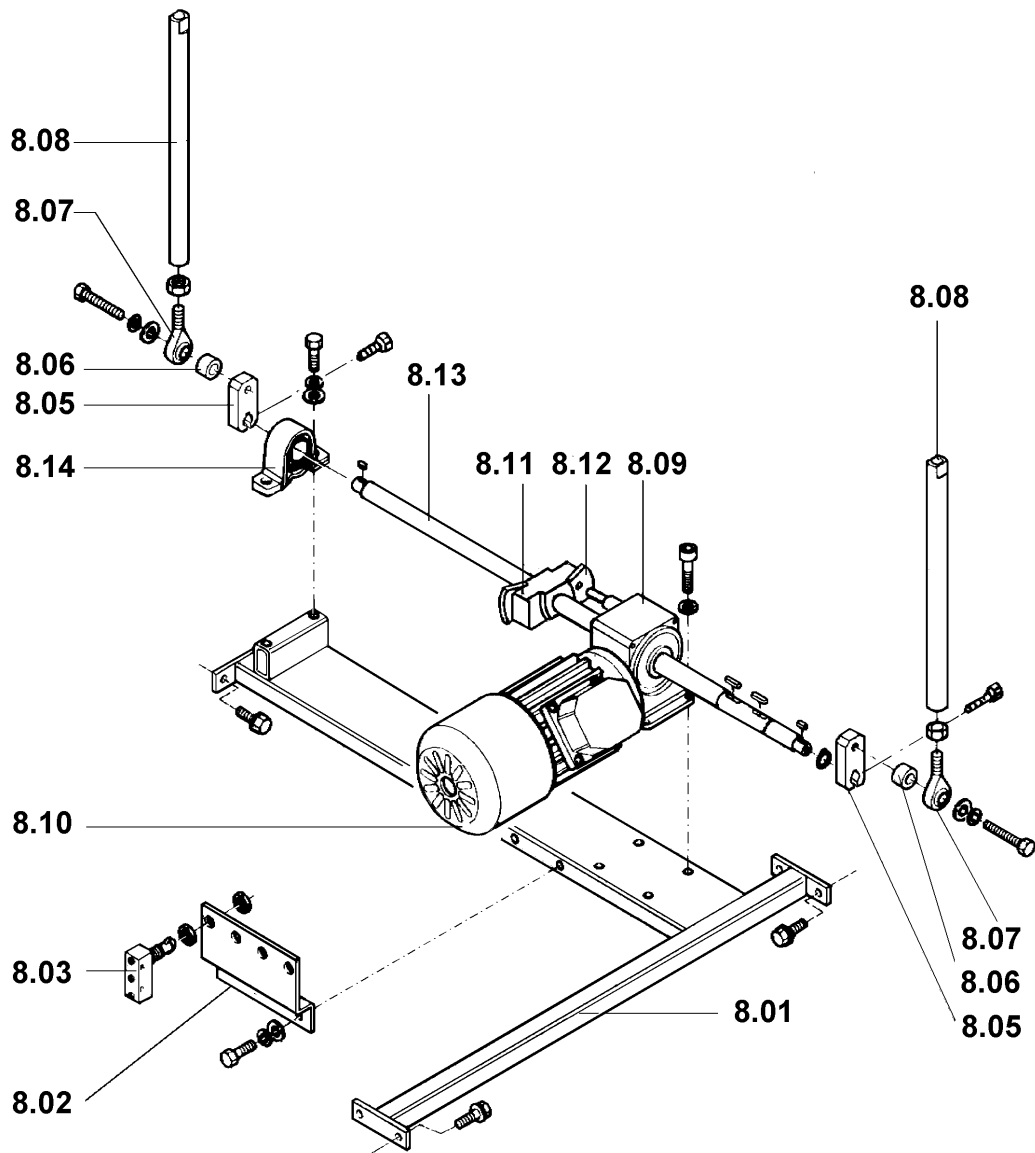
ITEMS DESCRIPTION	SCHEME 7
--------------------------	-----------------

Pos.	Code	Description
7.01	FE260020	Fan
7.02	FM290171 FM291276	Support RAL9005B. Support steel it
7.03	FM400001	Cooling system battery
7.04	S0K02000 S0K02002 S0K02004	Electropump kit (for 200-230-380-415V 50Hz) Electropump kit (for 208V 60 Hz) Electropump kit (for 380V 60Hz)
7.05	FM092001 FM096415	Base plane RAL9005B. Base plane steel it
7.06	FM250521	Tank tube Lg.400
7.07	FM250555	Cooling plant tube Lg.800
7.08	FM250551	Cooling plant tube Lg.400
7.09	FM250562	Cooling plant tube Lg.550
7.10	FM250551	Cooling plant tube Lg.400
7.11	FM160102	Cooling plant filler
7.12	FM160103	Lock nut
7.13	FM510302	Cap



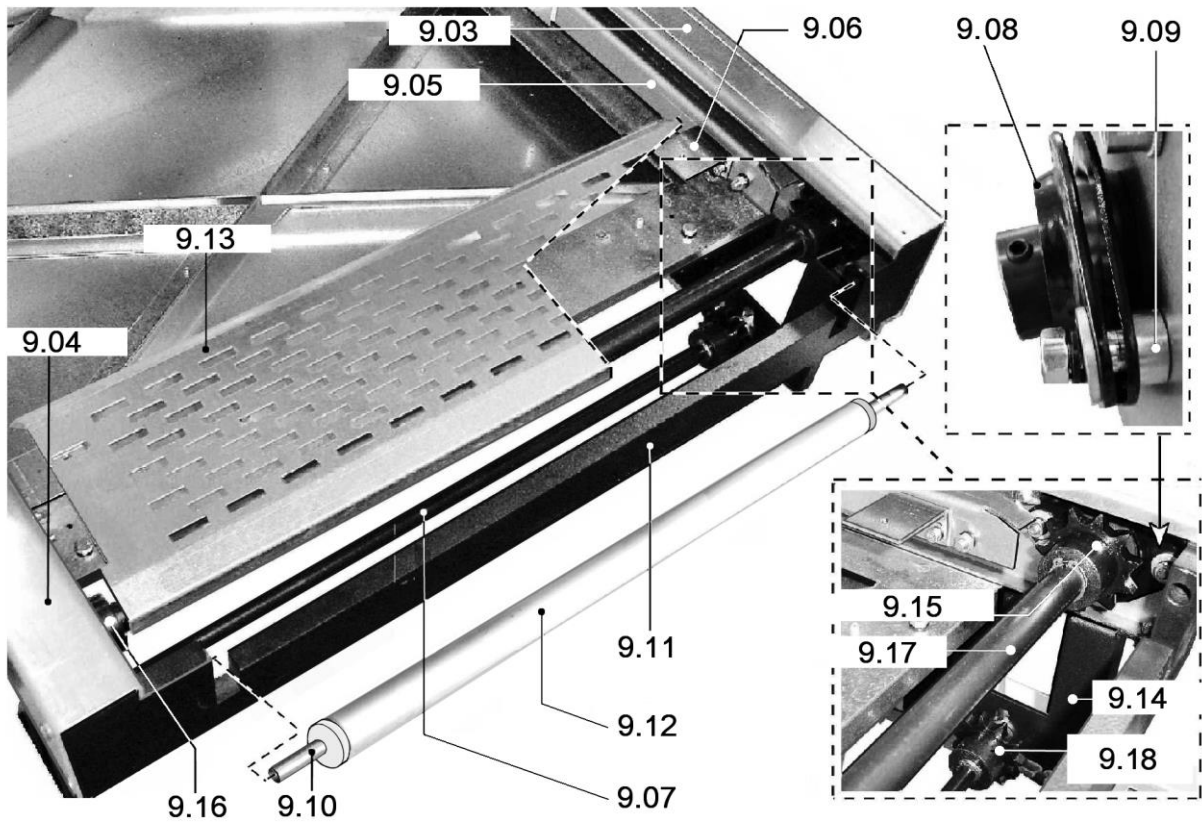
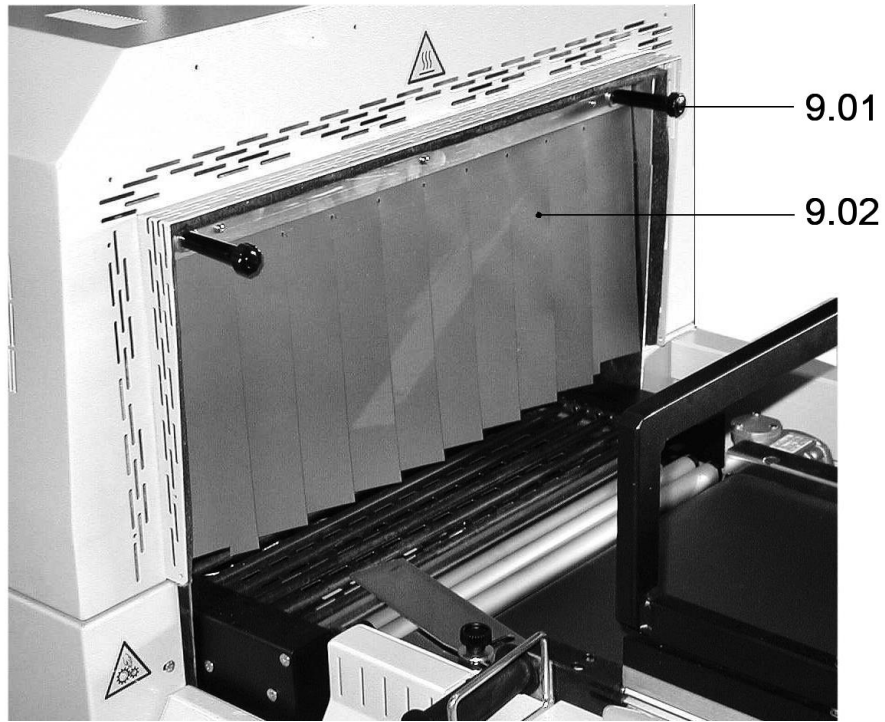
ITEMS DESCRIPTION	SCHEME 8
--------------------------	-----------------

Pos.	Code	Description
8.01	FM300023 FM300400	Frame RAL9005B. Frame steel it
8.02	FM290138	Microswitch support
8.03	FE220135	Microswitch
8.05	FM060020	Handle
8.06	FM160031	Spacer
8.07	FM640002	Rod end
8.08	FM060028	Connecting rod
8.09	FM760005 FM760006	Reduction gear 208-220 60Hz Reduction gear 200-220-380-415-440V 50Hz
8.10	FE245004 FE245006 FE245008	Motor 220-380-415/440V 50Hz Motor 208-220V 60Hz Motor 200V 50Hz
8.11	FM290223	Cams support
8.12	FM070024	Cam
8.13	FM010027	Shaft
8.14	FM610709	NSK support



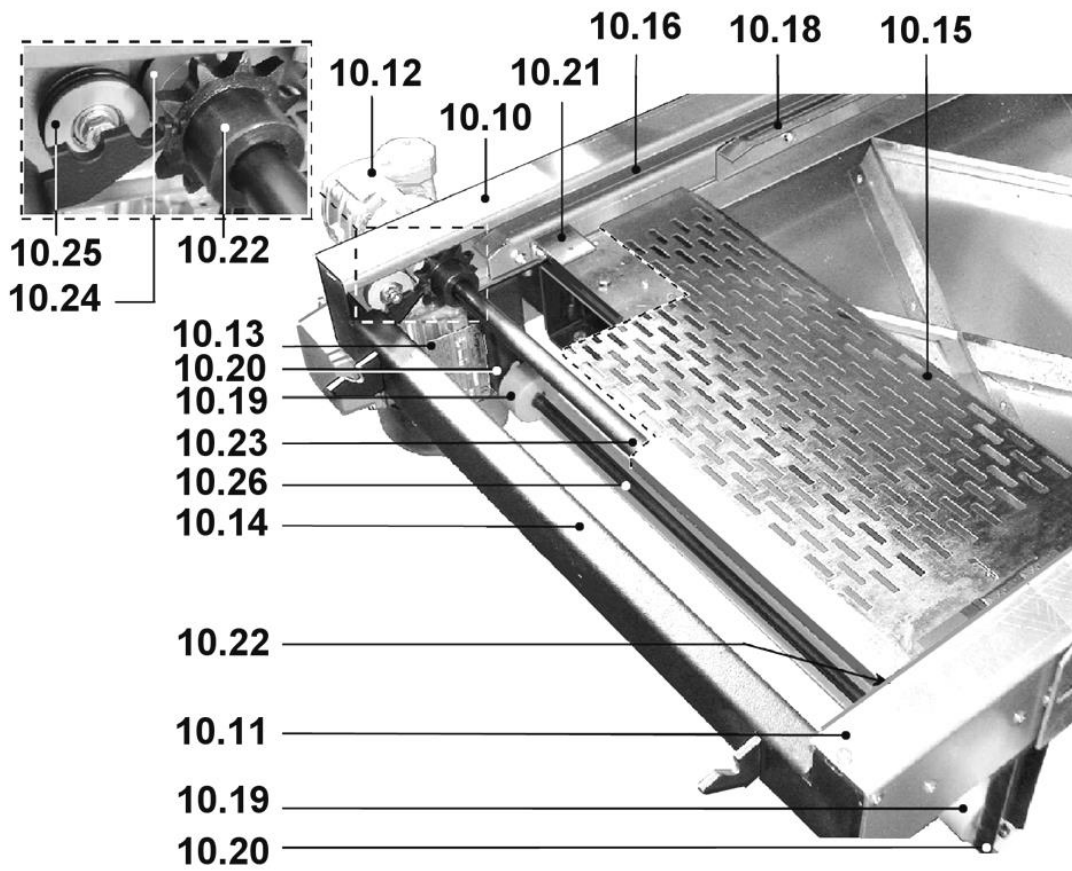
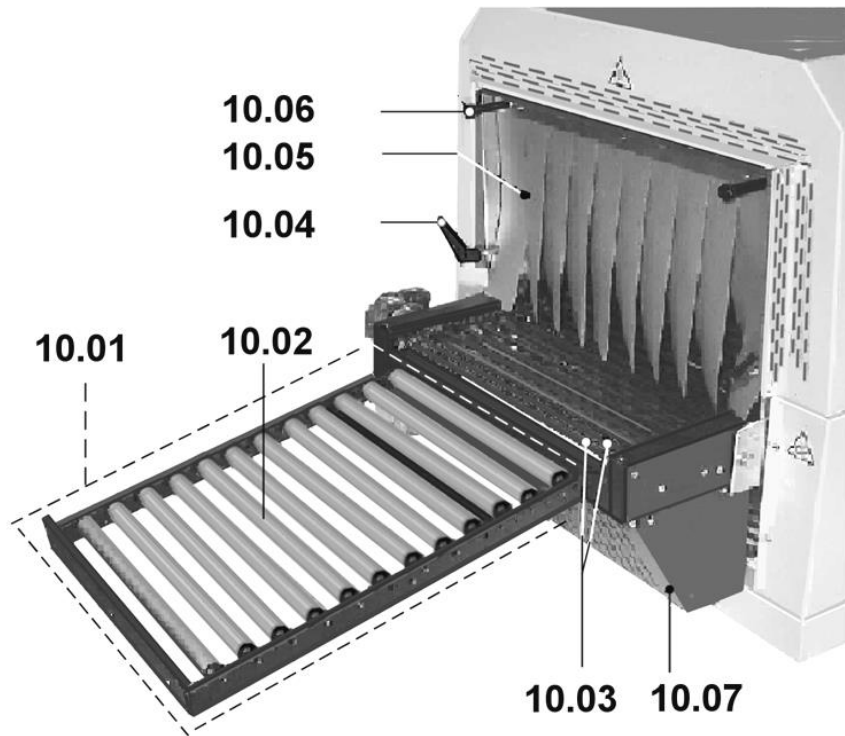
ITEMS DESCRIPTION	SCHEME 9
--------------------------	-----------------

Pos.	Code	Description
9.01	FM150105	Knob
9.02	P0K00510	Inlet curtain kit
9.03	FM270079	Rear shoulder
9.04	FM270078	Front shoulder
9.05	FM140073	Sliding guide
9.06	FM280033	Roll guide fastening square
9.07	FM010002	Countershaft
9.08	FM610710	Support
9.09	FM160214	Spacer
9.10	FM200089	Roller pin
9.11	FM300157	Right crosspiece RAL9005B
	FM300397	Right crosspiece steel it
9.12	FM250046	Transmission roller
9.13	FM095206	Belt inlet protection case
9.14	FM290145	Support
9.15	KR090011	Idle pinion kit
9.16	KR090023	Pinion kit
9.17	FM010028	Belt countershaft
9.18	KR170004	Countershaft pinion kit



ITEMS DESCRIPTION**SCHEME 10**

Pos.	Code	Description
10.01	RU020000 RU020003 RU020005	Roller table 40x50 RAL9005B. Stainless steel roller table 40x50 (optional) 40x50 Roller plate steel it
10.02	FM710305	Idle roll
10.03	AS250026	Outfeed rool
10.04	FM510037	Fixed lever
10.05	P0K00511	Outlet curtain kit
10.06	FM150105	Knob
10.07	FM095095 FM096411	Chain case RAL9005B. Chain case steel it
10.10	FM270079	Rear shoulder
10.11	FM270078	Front shoulder
10.12	FM760023	Reduction gear
10.13	FE240080	Motor H56 HP0,12 B14
10.14	FM300197 FM300396	Left belt crosspiece RAL9005. Left belt crosspiece steel it
10.15	FM095207	Belt outlet protection case
10.16	FM140073	Chain sliding roll guide
10.18	FM140035	Tunnel sliding roll guide
10.19	FM250005	Transmission roll
10.20	FM290134 FM291273	Transmission support RAL9005B. Transmission support steel it
10.21	FM280033	Roll guide fastening square
10.22	KR090023	Pinion kit
10.23	FM010029	Conveyor belt motor shaft
10.24	FM250027	Belt motor roll
10.25	KR090025	Roll with gaskets kit
10.26	FM010002	Transmission shaft



ITEMS DESCRIPTION	SCHEME 11
--------------------------	------------------

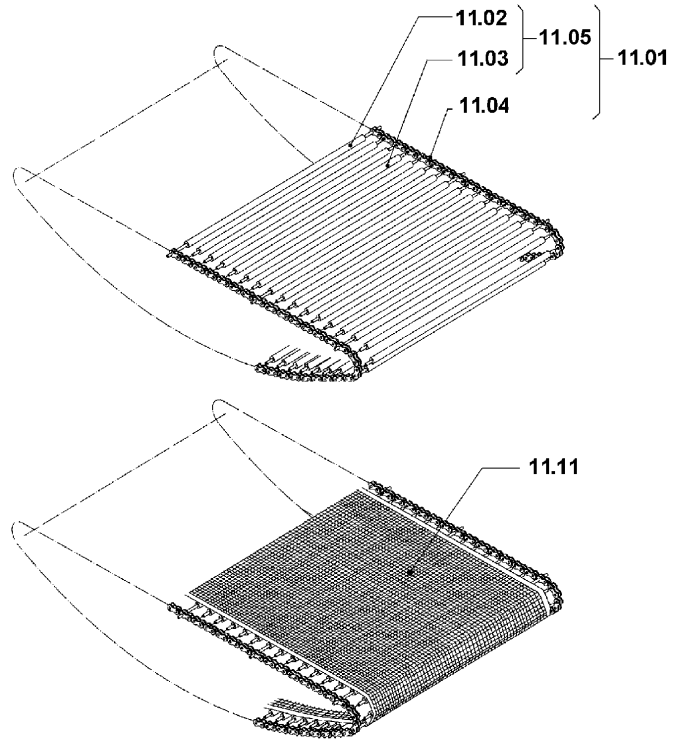
Pos.	Code	Description
11.01	CT170002	Standard complete conveyor belt
11.02	AS250052	Chain fastening roll
11.03	AS250047	Roll for chain
11.04	FM100017	Chain with holed pins
11.05	KR170023	Rollers kit
11.11	FM710013	Teflon conveyor belt (optional)

ITEMS DESCRIPTION	SCHEME 12
--------------------------	------------------

Pos.	Code	Description
12.01	FM290119	Motor support plate
12.02	FE240070	Three-phase motor 230-380-415V
	FE240071	Three-phase motor 200-208V
12.03	FM410003	Fan
12.04	FM290149	Single resistor support
12.05	FM290150	Double resistor support
12.06	FE380015	Resistor 380-415V
	FE380020	Resistor 230V
	FE380019	Resistor 200-208V

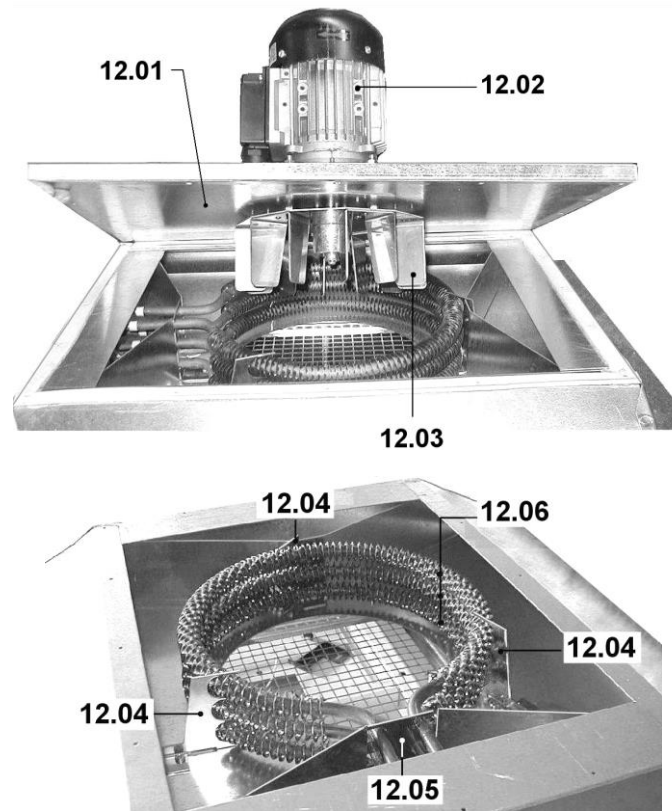
MACHINE DETAIL DRAWING

SCHEME 11



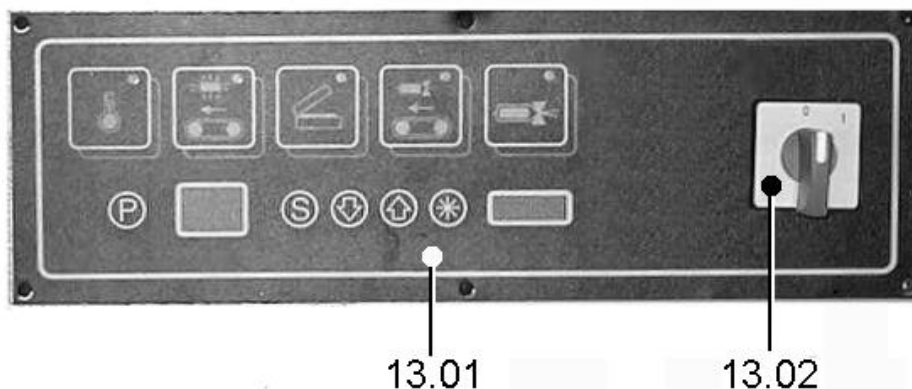
MACHINE DETAIL DRAWING

SCHEME 12



MACHINE DETAIL DRAWING

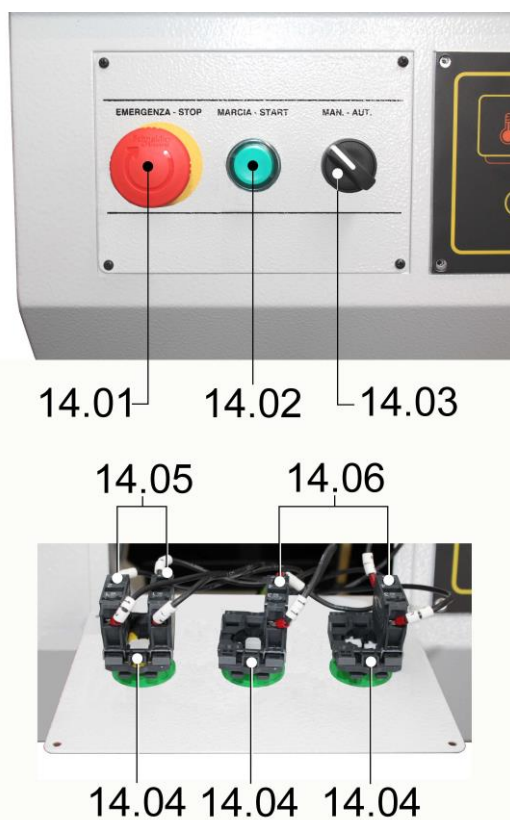
SCHEME 13



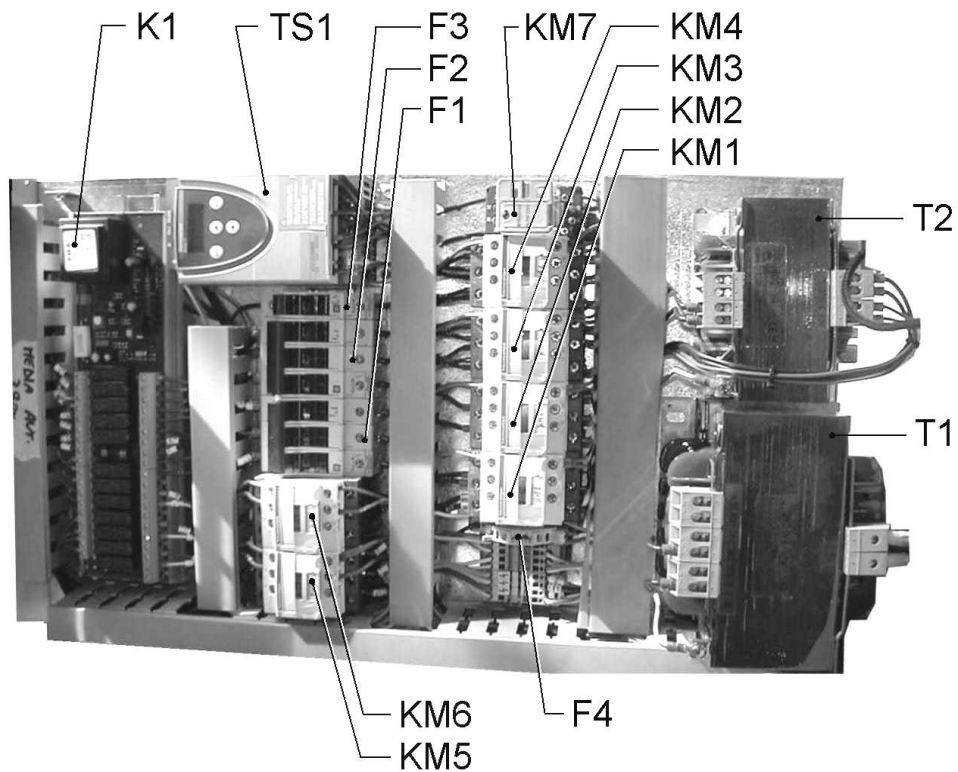
Pos.	Code	Description
13.01	S0190056 FE120363 SM190016 FM110144	Panel + electronic board Electronic board Panel Adhesive membrane for electronic board
13.02	FE080001	Switch 20A

MACHINE DETAIL DRAWING

SCHEME 14

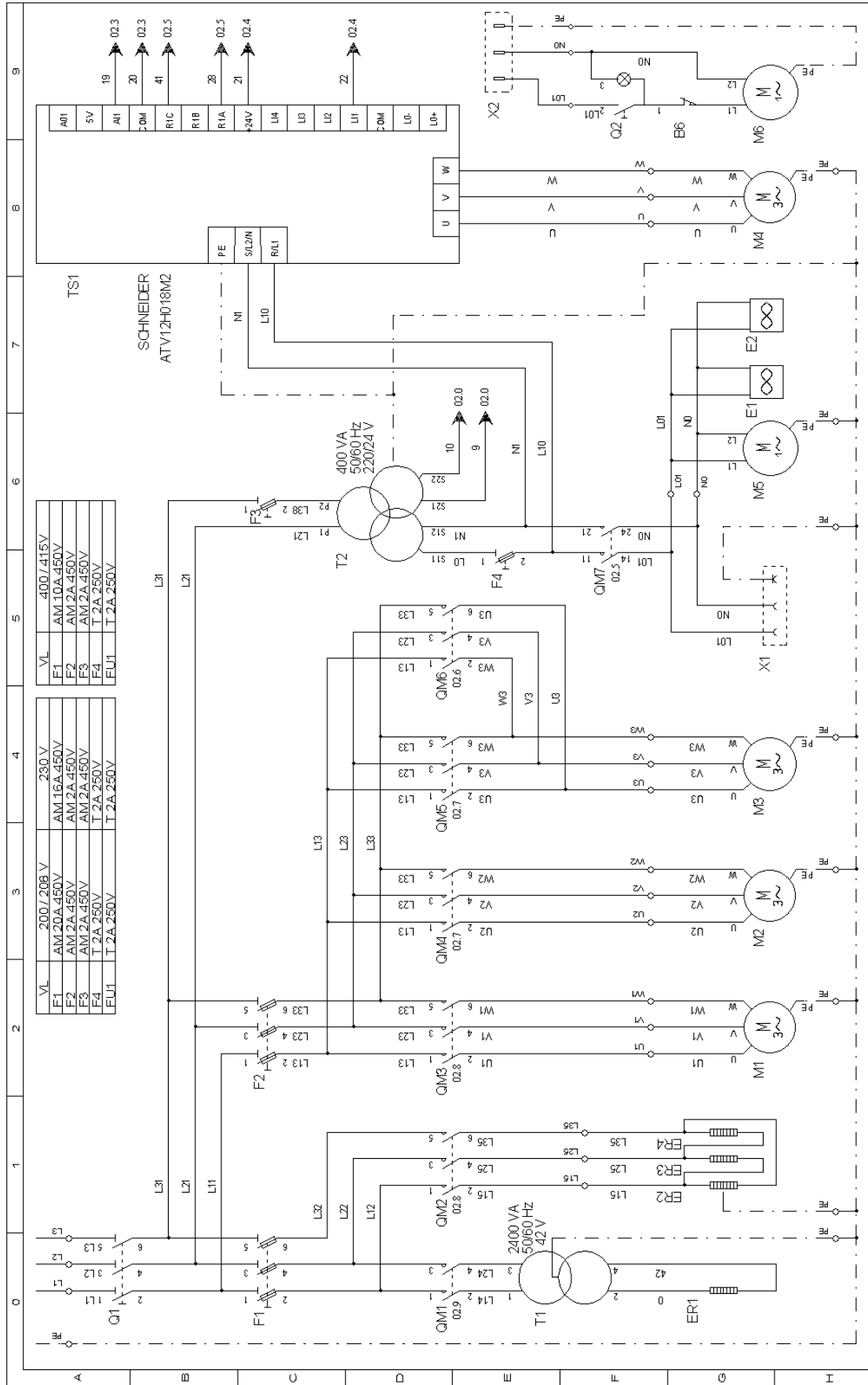


Pos.	Code	Description
14.01	FE340005	Emergency pushbutton
14.02	FE340001	Start button
14.03	FE085004	MAN-AUT selector
14.04	FE340501	Contacts holder
14.05	FE340506	"NC" contact
14.06	FE340505	"NO" contact



Pos.	Code	Description
F1	FE290405 FE290407 FE290408	Fuse 10.3X38 AM 10A (380-415V) Fuse 10.3X38 AM 16A (230V) Fuse 10.3X38 AM 20A (200-208V)
F2	FE290401	Fuse 10.3X38 AM 2A
F3	FE290401	Fuse 10.3X38 AM 2A
F4	FE290121	Fuse 5X20 T 2A
KM1	FE110615	Contacteur LC1-D18B7
KM2	FE110602 FE110615	Contacteur LC1-D09B7 (380-415V) Contacteur LC1-D18B7 (200-208-230V)
KM3/4/5/6	FE110602	Contacteur LC1-D09B7
KM7	FE370006	Relay 24VAC
K1	FE120353	Electronic control board
TS1	KR170001	Inverter
T1	FE440613 FE440612	Transformer 2400VA (380-415V) Transformer 2400VA (200-208-230V)
T2	FE440026 FE440025	Transformer 400VA (380-415V) Transformer 400VA (200-208-230V)

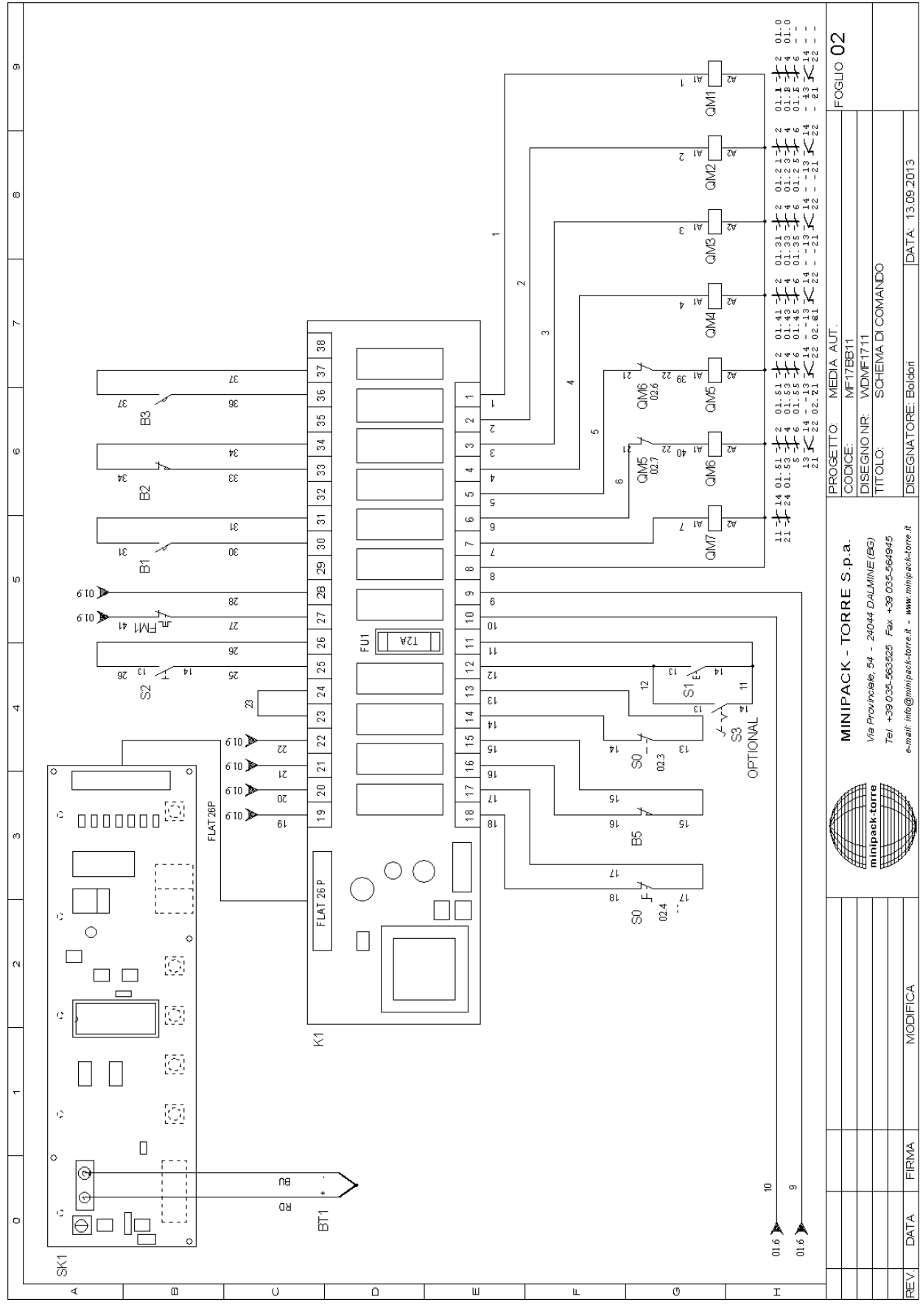
WIRING DIAGRAM



VL	200 / 208 V	400 / 415 V
F1	AM 20A 450V	AM 10A 450V
F2	AM 2A 450V	AM 2A 450V
F3	AM 2A 450V	AM 2A 450V
F4	T 2A 250V	T 2A 250V
FLU1	T 2A 250V	T 2A 250V

		MINIPACK - TORRE S.p.a. Via Provinciale, 54 - 24044 DALMINO (BG) Tel. +39 035-563525 Fax. +39 035-564945 e-mail: info@minipack-torre.it - www.minipack-torre.it
REV.	DATA	FIRMA
MODIFICA		Foglio 01
		PROGETTO: MEDIA AUT. CODICE: MF17BB11 Disegno nr: WDMF1711 Titolo: SCHEMA DI POTENZA Disegnatore: Boldoni DATA: 13.09.2013

WIRING DIAGRAM



		MINIPACK - TORRE S.p.a. Via Provinciale, 54 - 24044 DALMINE (BG) Tel. +39 035-563525 Fax +39 035-564945 e-mail: info@minipack-torre.it - www.minipack-torre.it	
PROGETTO: MEDIA AUT.		CODICE: MF17BB11	
DISEGNO NR: WDMF1711		TITOLO: SCHEMA DI COMANDO	
DISEGNATORE: Boldoni		DATA: 13.09.2013	
FOGGIO 02		REV: DATA FIRMA MODIFICA	

WIRING DIAGRAM DESCRIPTION

B1	Frame lowering limit switch	
B2	Frame lifting limit switch	
B3	Frame safety device cutting out limit switch	
B5	Frame safety limit switch	
B6	Rewinder limit switch	
BT1	Thermocouple	
E1/2	Cooling fan	
ER1	Cutting resistance	
ER2	Heater	
ER3	Heater	
ER4	Heater	
F1	Sealing blade / heaters fuse 10.3X38	
F2	Fan / belt / frame motor fuse 10.3X38	
F3	Auxiliary transformer fuse 10.3X38	
F4	Ventilator / pump motor fuse 5X20	
FU1	Board fuse 5X20	
K1	Power board	
M1	Fan motor	
M2	Belt motor	
M3	Frame drive motor	
M4	Belt oven motor	
M5	Ventilator motor	
M6	Rewinder motor	
Q1	Main switch	
Q2	Rewinder switch	
QM1	Cutting contactor	
QM2	Heaters contactor	
QM3	Fan contactor	
QM4	Sealing belt contactor	
QM5	Frame descent contactor	
QM6	Frame rise contactor	
QM7	Accessories contactor	
S0	Emergency pushbutton	
S1	Start button	
S2	Manual selector	
S3	Foot pedal (optional)	
SK1	Control board	
T1	Cut transformer	
T2	Auxiliary transformer	
TS1	Inverter	
X1	Rewinder power supply socket	
X2	Rewinder power supply plug	