



Minipack-torre S.p.A.
Via Provinciale, 54 - 24044 Dalmine (BG) - Italy
Tel. (035) 563525 – Fax (035) 564945
E-mail: info@minipack-torre.it
[http:// www.minipack-torre.it](http://www.minipack-torre.it)

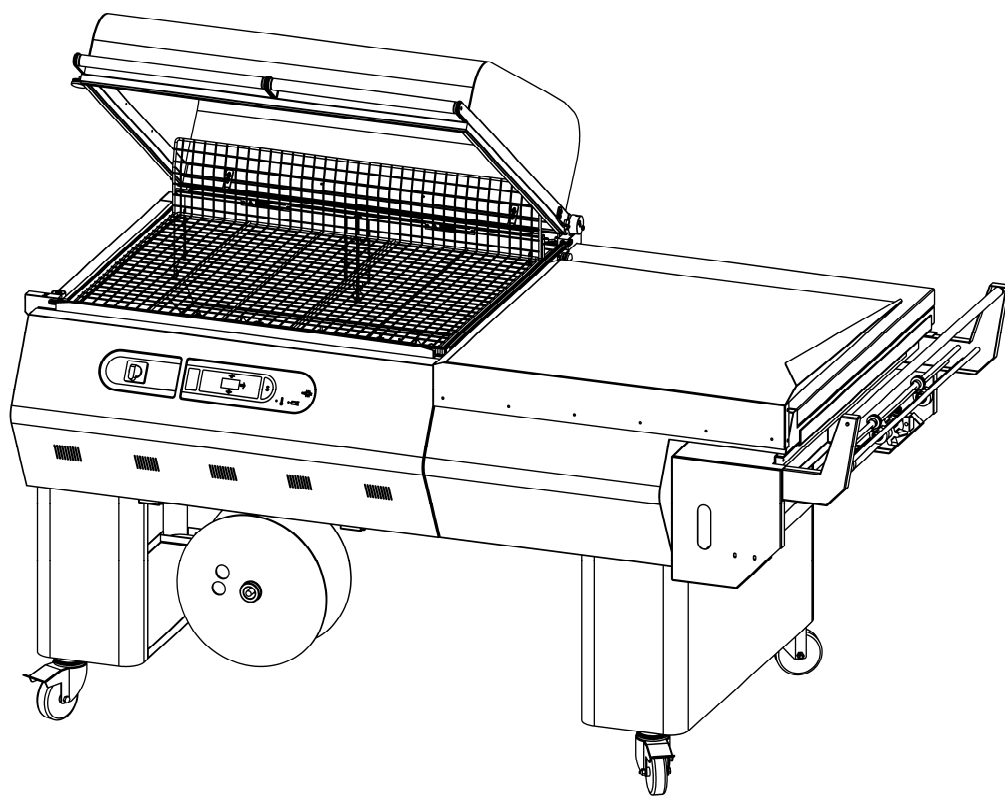


RP85

Spare parts catalogue

(Valid from serial number 2901 dated 06.2012 up to 4625 dated 09.2013.
With the exclusion of 4119, 4120, 4121.)

REV.02: Version with new thermostat FE430013.



CAREFULLY READ THIS CATALOGUE BEFORE ORDERING ANY SPARE PART



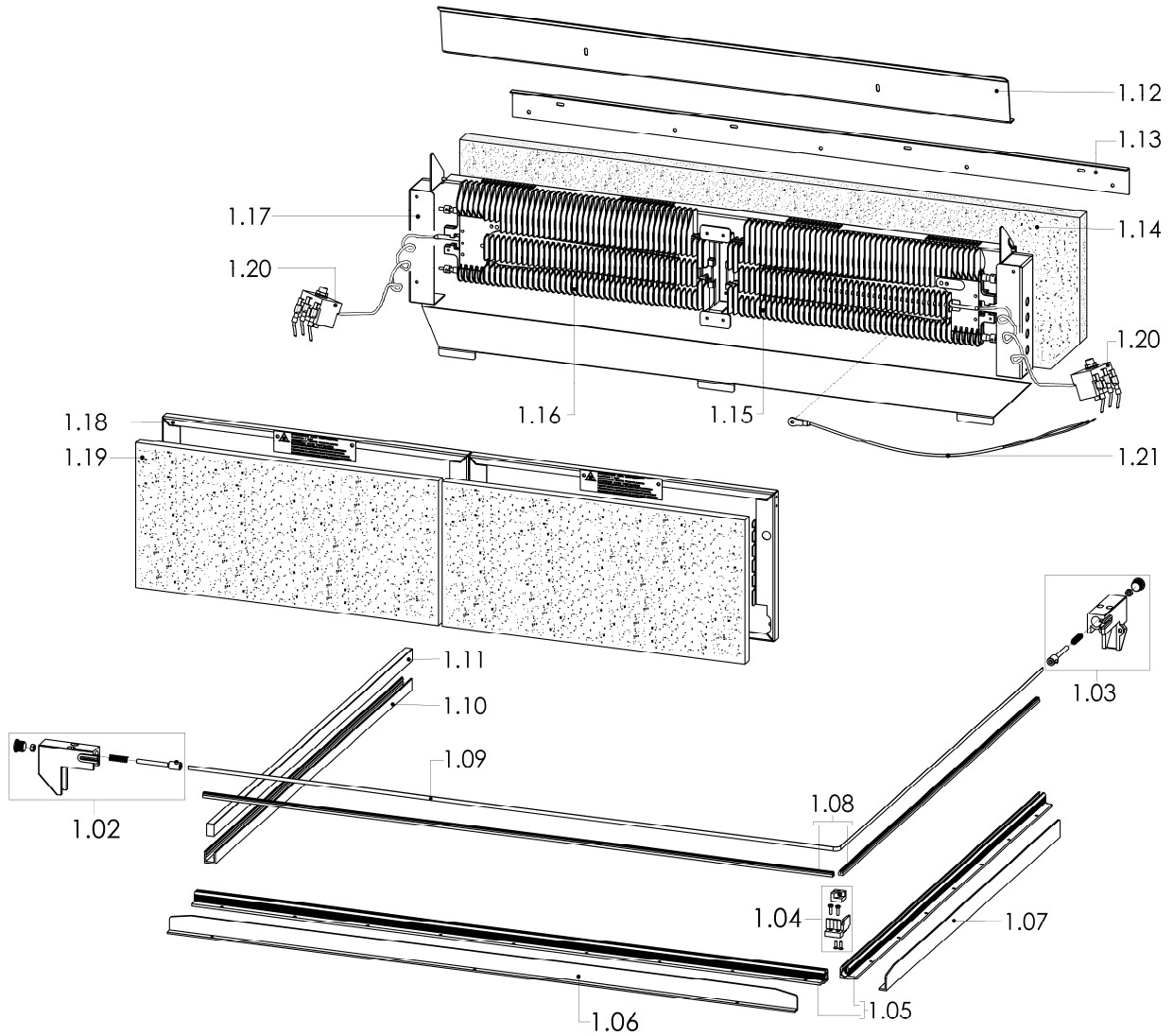
DOC. N. FM112171
REV. 02
Ed: 10.2013

ITEMS DESCRIPTION	SCHEME 1
--------------------------	-----------------

Version valid up to serial number 3249 dated 09.2012

Pos.	Code	Description
1.02	S0K00303	Front clamp kit
1.03	S0K00304	Rear clamp kit
1.04	S03A0306	Blade holder central clamp kit
1.05	S03A0309	Infill holder channel kit
1.06	S03A0901	Front guard kit
1.07	S03A0902	Side guard kit
1.08	S03A0310	Infill blocks kit
1.09	KR030001	Teflon-coated sealing blade
1.10	FM220269	Lower rubber holder side channel
1.11	FM350007	15x10 lg.720mm Neoprene rubber
1.12	FM281521	Heating chamber flap
1.13	FM091186	Rear reinforcement
1.14	FM195116	Rock wool panel
1.15	FM390064 FM390063 FM390062	W2100 V230 Heat sink W2100 V200-208 Heat sink W2100 V400 Heat sink
1.16	FM390064 FM390063 FM390062	W2100 V230 Heat sink W2100 V200-208 Heat sink W2100 V400 Heat sink
1.17	FM091323	Heaters rear plate
1.18	FM091038	Heaters front plate
1.19	FM195115	Glass wool panel
1.20	FE430013	Safety thermostat (See the position 4.34)
1.21	FE435011	Thermocouple

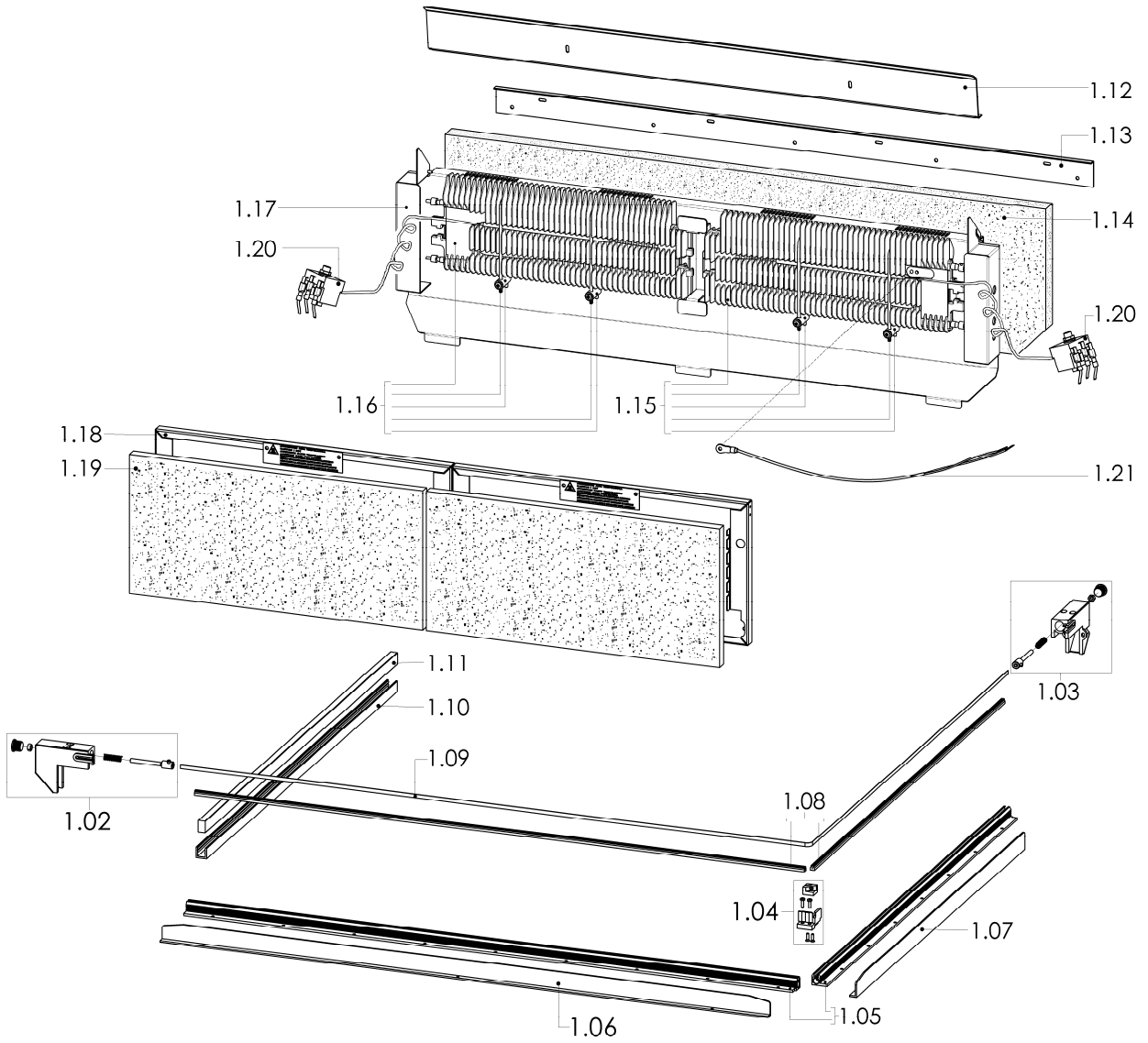
Version valid up to serial number 3249 dated 09.2012



ITEMS DESCRIPTION**SCHEME 1.1****Version valid from serial number 3250 dated 10.2012**

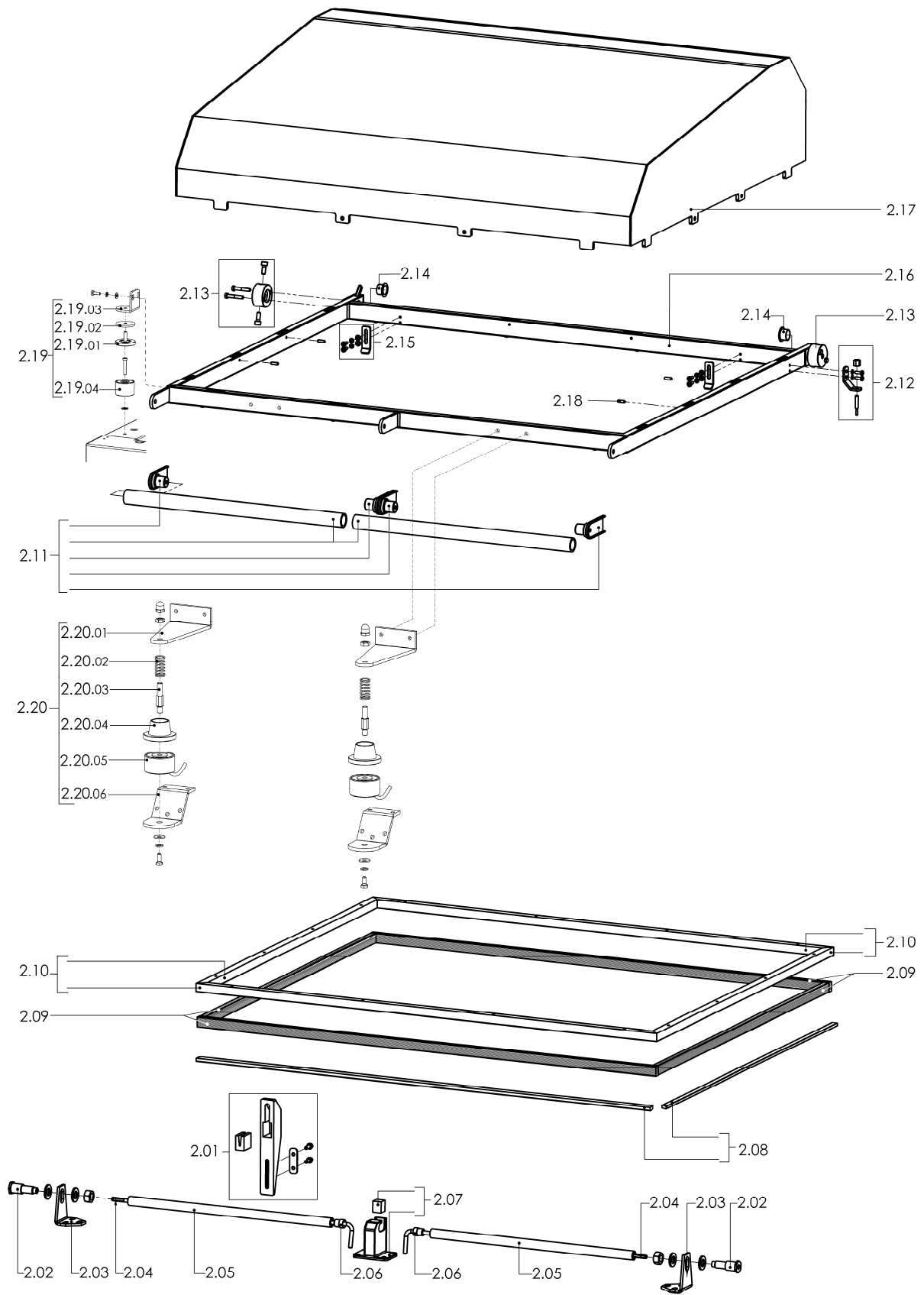
Pos.	Code	Description
1.02	S0K00303	Front clamp kit
1.03	S0K00304	Rear clamp kit
1.04	S03A0306	Blade holder central clamp kit
1.05	S03A0309	Infill holder channel kit
1.06	S03A0901	Front guard kit
1.07	S03A0902	Side guard kit
1.08	S03A0310	Infill blocks kit
1.09	KR030001	Teflon-coated sealing blade
1.10	FM220269	Lower rubber holder side channel
1.11	FM350007	15x10 lg.720mm Neoprene rubber
1.12	FM281521	Heating chamber flap
1.13	FM091186	Rear reinforcement
1.14	FM195116	Rock wool panel
1.15	KR310A03 KR310D03 KR350B05	W2100 V230 Heat sink kit W2100 V200-208 Heat sink kit W2100 V400 Heat sink kit
1.16	KR310A03 KR310D03 KR350B05	W2100 V230 Heat sink kit W2100 V200-208 Heat sink kit W2100 V400 Heat sink kit
1.17	FM091323	Heaters rear plate
1.18	FM091038	Heaters front plate
1.19	FM195115	Glass wool panel
1.20	FE430013	Safety thermostat (See the position 4.34)
1.21	FE435011	Thermocouple

Version valid from serial number 3250 dated 10.2012



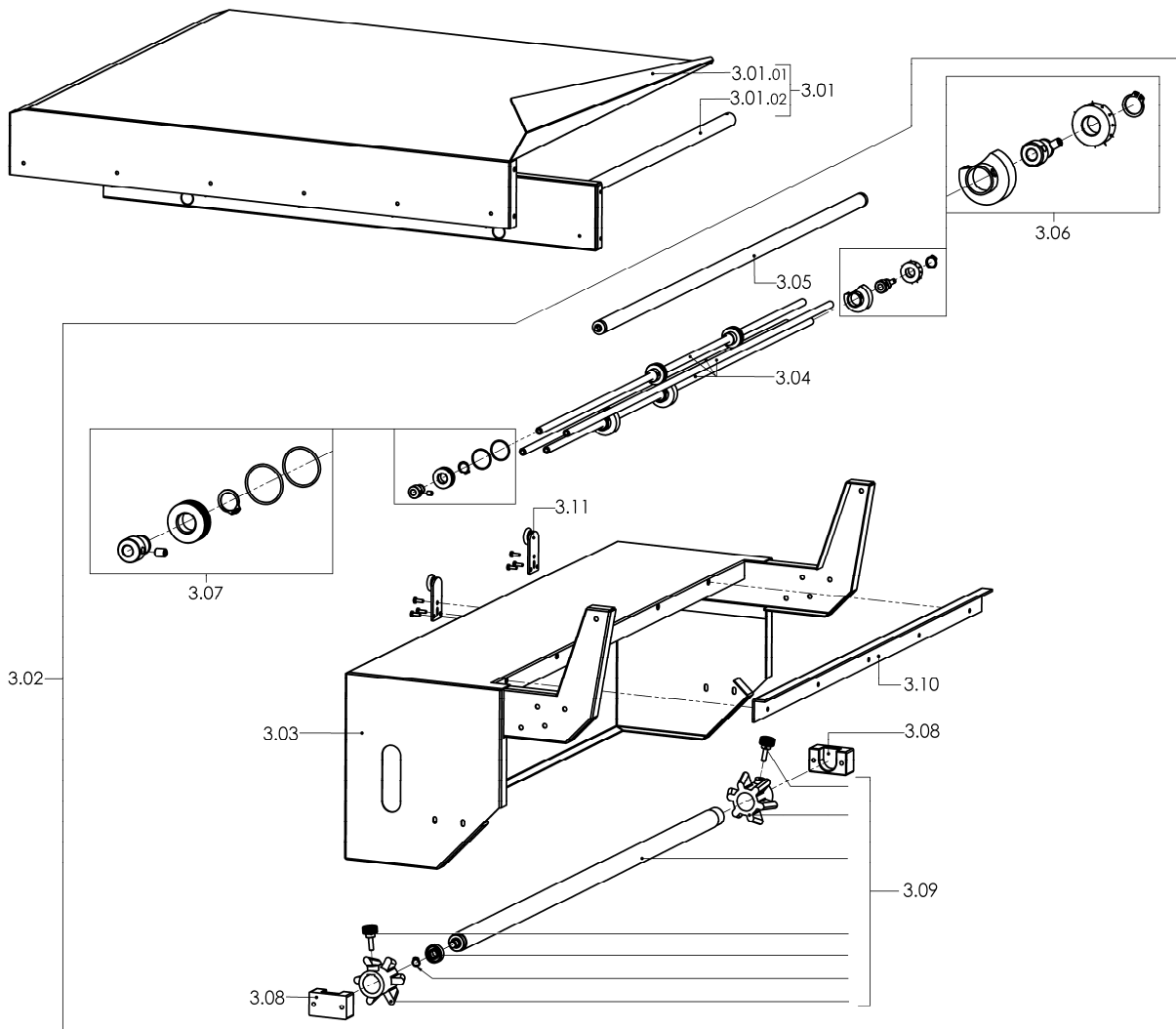
ITEMS DESCRIPTION	SCHEME 2
--------------------------	-----------------

Pos.	Code	Description
2.01	G0K00011	Hood shock absorber kit
2.02	S0K01002	Hood rotation pin kit
2.03	FM290101	Hood support
2.04	FM170003	Torsion bar
2.05	FM250103	Torsion bar tube
2.06	FM340100	Torsion bar bush
2.07	S03A1004	Torsion bar housing kit
2.08	KR030002	Teflon kit
2.09	FM350010	Neoprene rubber 17x10 lg.3190mm
2.10	KR350053	Upper rubber holder channels kit
2.11	S03A0402	Handgrip kit x hood
2.12	S0K00406	Microswitch screw kit
2.13	S0K01001	Torsion bar blocking flange kit
2.14	FM540007	Bush
2.15	S0K00405	Heating chamber flap opening lever kit
2.16	FM300248	Upper hood frame
2.17	FM081030	Upper hood h.200mm (standard)
	FM081035	Upper hood h.300mm (optional)
	FM081036	Upper hood h.490mm (optional)
2.18	FM852207	M4x14 screw
2.19	MR350001	Magnet pressing group (standard)
2.19.01	FM160026	Electromagnet contrast
2.19.02	FM350011	Electromagnet contrast washer
2.19.03	FM280011	Electromagnet contrast square
2.19.04	FE130013	Electromagnet
2.20	MS310001	Sealing magnet group (optional)
2.20.01	FM290156	Magnet contrast support
2.20.02	FM170105	Compression spring
2.20.03	FM200065	Electromagnet contrast pin
2.20.04	FM160032	Electromagnet contrast
2.20.05	FE130010	Electromagnet
2.20.06	FM290155	Magnet support



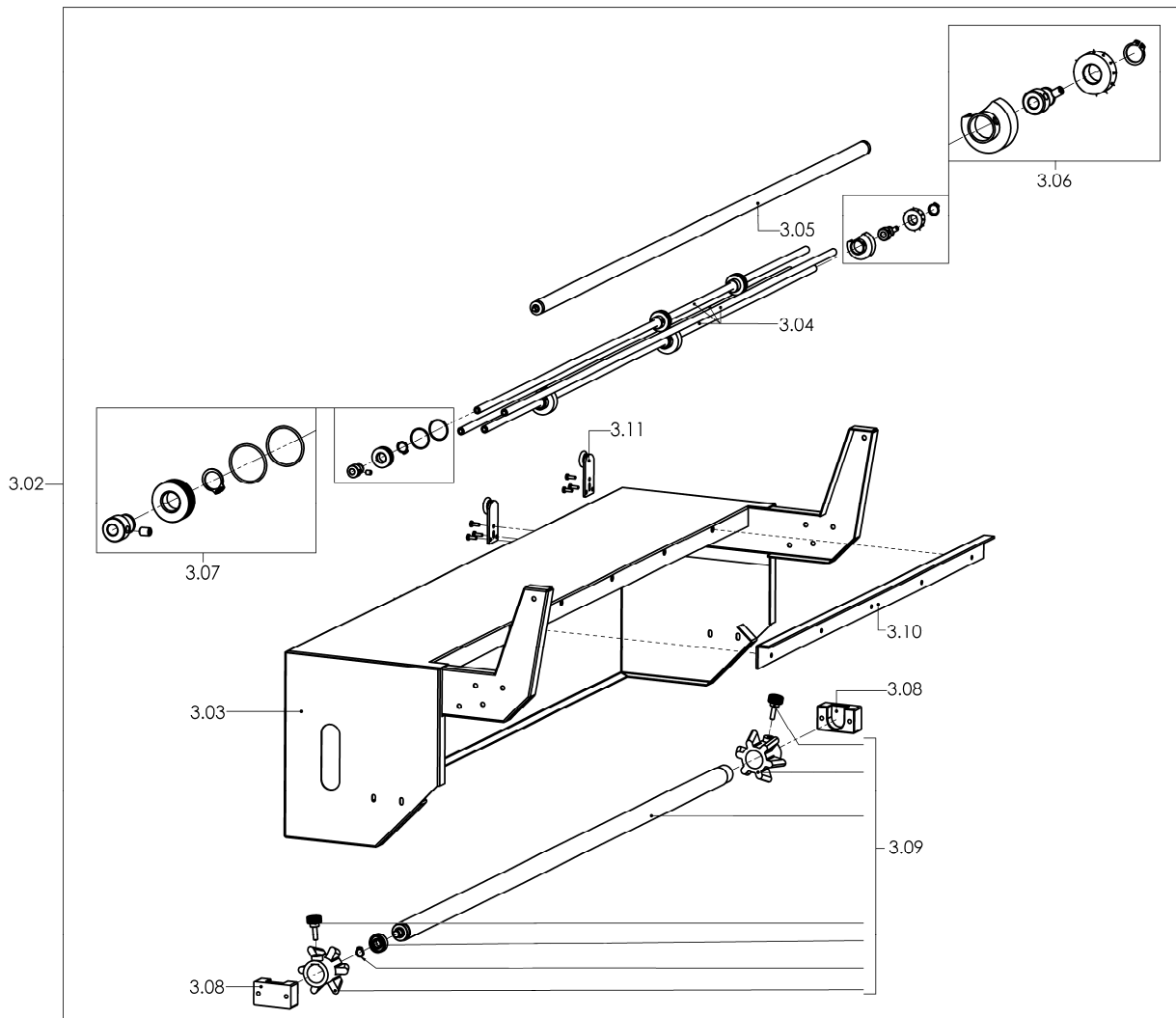
ITEMS DESCRIPTION	SCHEME 3
--------------------------	-----------------

Pos.	Code	Description
3.01	PC35B001	RAL7035B. packaging plate pre-assembly
3.01.01	FM090178	RAL7035B. packaging plate
3.01.02	FM300003	Packaging plate frame
3.01.01	FM090162	Inox packaging plate (optional)
3.02	PB35B001	RAL7035B. roll support pre-assembly
3.03	FM091190	RAL7035B. roll support
3.04	FM030021	Microperforator rod
3.05	FM710318	Film drive roller
3.06	S03A0605	Microperforator with needles kit
3.07	S0K00608	Slotted microperforator kit
3.08	FM340525	Reel holder roller support
3.09	S03A0602	Film roll tube kit
3.10	FM220501	Roll support guide corner
3.11	FM660002	Wheeled trolley



ITEMS DESCRIPTION (Optional)	SCHEME 3.1
---	-------------------

Pos.	Code	Description
3.02	PB35B002	RAL7035B. larger roll support pre-assembly
3.03	FM091199	RAL7035B. larger roll support
3.04	FM030035	Microperforator rod
3.05	FM710313	Film drive roller
3.06	S03A0605	Microperforator with needles kit
3.07	S0K00608	Slotted microperforator kit
3.08	FM340525	Reel holder roller support
3.09	No code	Film roll tube kit
3.10	FM220501	Roll support guide corner
3.11	FM660002	Wheeled trolley



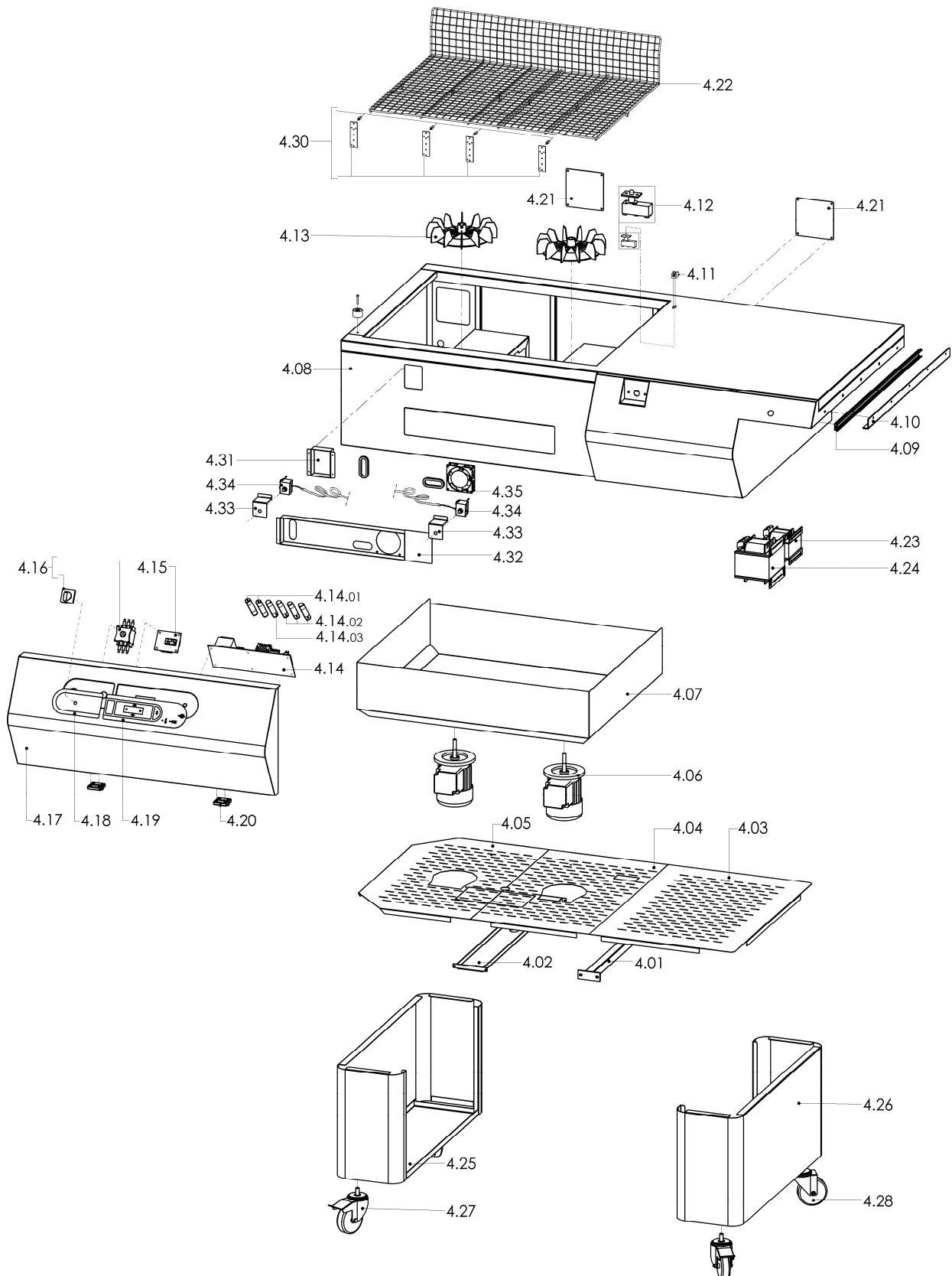
ITEMS DESCRIPTION

SCHEME 4

Version valid up to serial number 3275 dated 10.2012

Pos.	Code	Description
4.01	FM300018	Crosspiece
4.02	FM300141	Rewinder crosspiece
4.03	FM090665	Right lower cover
4.04	FM090627	Central lower cover
4.05	FM090626	Left lower cover
4.06	FE240004 FE240005 FE240006	Motor 200V 50Hz 3Ph Motor 208V 60Hz 3Ph Motor 230-400V 50Hz 3Ph
4.07	FM091324	Lower hood
4.08	FM091193	RAL7035B. grey fairing
4.09	FM140001	"ROLLGE 150" channel
4.10	FM220501	Guide corner
4.11	FM230002	Microswitch guard
4.12	S0K01208	Hood microswitch kit
4.13	S0K01121	Fan kit
4.14	FE120257 FE120262	Power board (400V) Power board (200-208-230V)
4.14.01	FE290405 FE290402	Fuse 10.3X38 AM 10A (200-208-230V) Fuse 10.3X38 AM 4A (400V)
4.14.02	FE290409 FE290407	Fuse 10.3X38 AM 25A (200-208-230V) Fuse 10.3X38 AM 16A (400V)
4.14.03	FE290402 FE290401	Fuse 10.3X38 AM 4A (200-208-230V) Fuse 10.3X38 AM 2A (400V)
4.15	FE120261	Control board
4.16	FE080001 FE080000	Switch 20A (400V) Switch 32A (200-208-230V)
4.17	FM091188	RAL7035B. grey front panel
4.18	FM110340	Push button panel adhesive
4.19	FE120601	Membrane keyboard
4.20	FM510084	Hinge
4.21	FM091148	RAL7035B. grey panel
4.22	FM130003	Reticulated plate
4.23	FE440026 FE440025	Transformer 400VA (400V) Transformer 400VA (200-208-230V)
4.24	FE440628 FE440627	Transformer 2500VA (400V) Transformer 2500VA (200-208-230V)
4.25	FM095796	RAL7035B. grey machine left support
4.26	FM095794	RAL7035B. grey machine right support
4.27	FM770510	Wheel Ø100 with brake
4.28	FM770509	Wheel Ø100
4.30	S03A1301	Screened plate front support
4.31	FM095964	Switch cover
4.32	FM095969	Boards cover
4.33	FM095966	Support
4.34	FE430013	Safety thermostat (See the position 1.20)
4.35	FE260030	Ventilator

Version valid up to serial number 3275 dated 10.2012



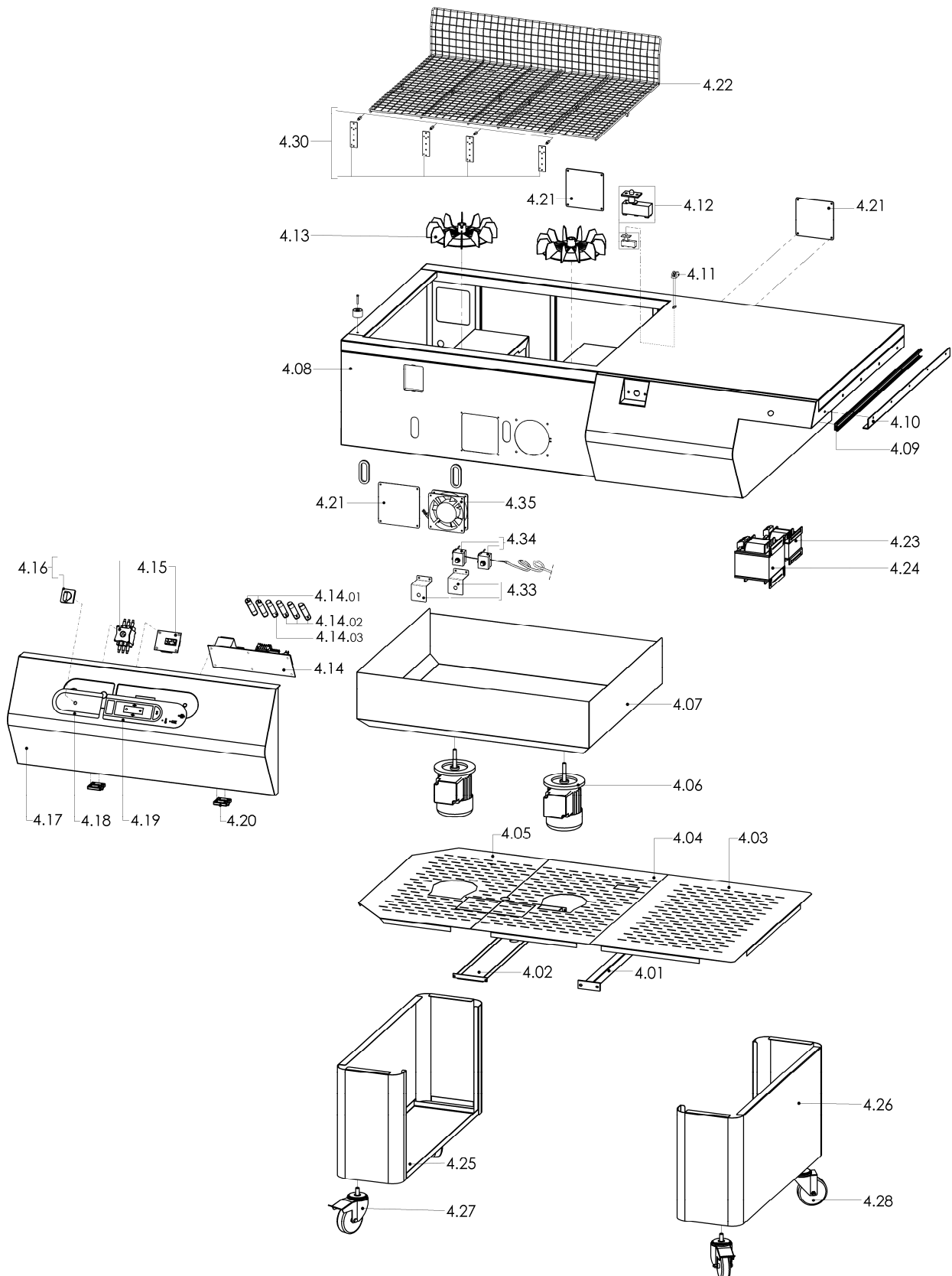
ITEMS DESCRIPTION

SCHEME 4.1

Version valid from serial number 3276 dated 10.2012

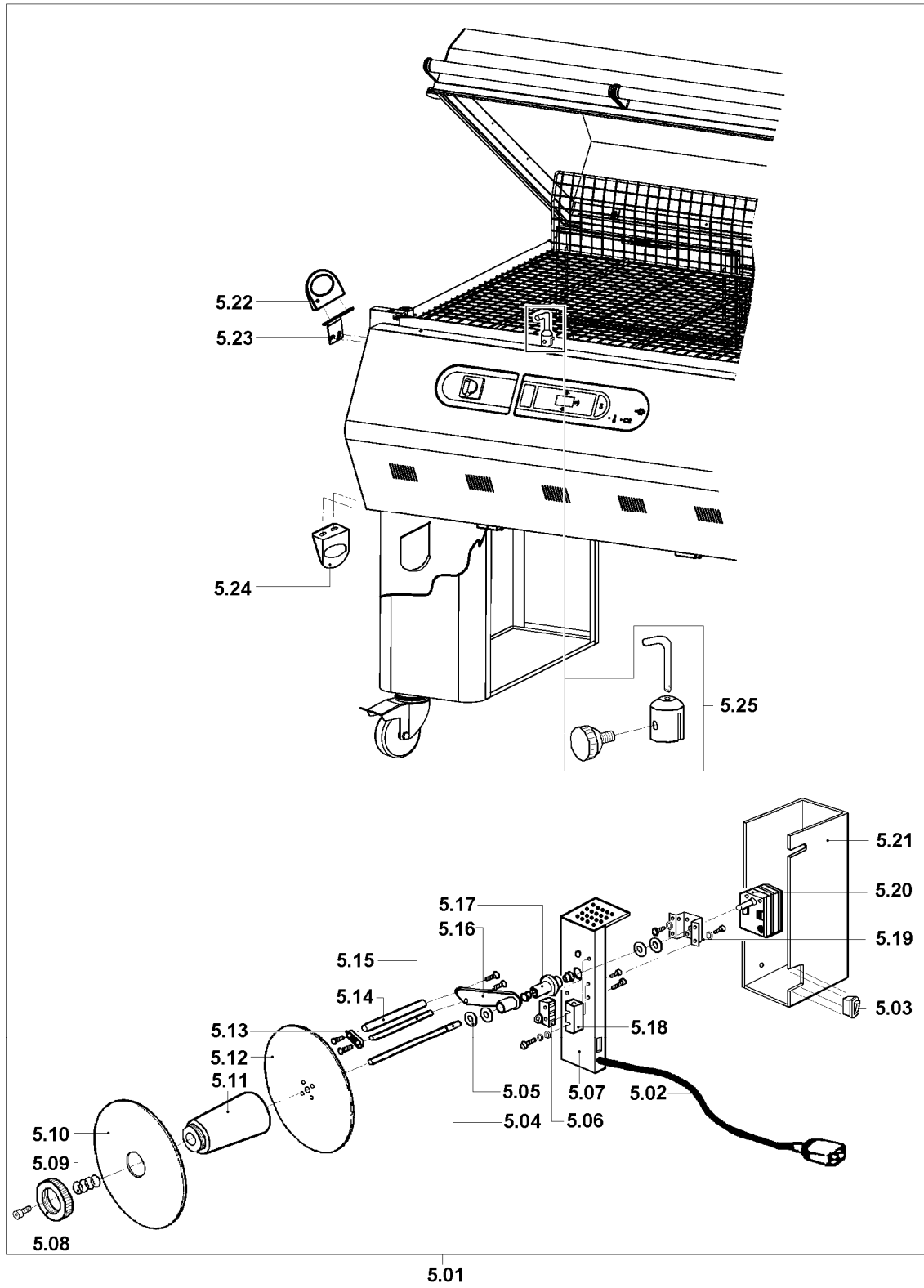
Pos.	Code	Description
4.01	FM300018	Crosspiece
4.02	FM300141	Rewinder crosspiece
4.03	FM090665	Right lower cover
4.04	FM090627	Central lower cover
4.05	FM090626	Left lower cover
4.06	FE240004 FE240005 FE240006	Motor 200V 50Hz 3Ph Motor 208V 60Hz 3Ph Motor 230-400V 50Hz 3Ph
4.07	FM091324	Lower hood
4.08	FM091227	RAL7035B. grey fairing
4.09	FM140001	"ROLLGE 150" channel
4.10	FM220501	Guide corner
4.11	FM230002	Microswitch guard
4.12	S0K01208	Hood microswitch kit
4.13	S0K01121	Fan kit
4.14	FE120257 FE120262	Power board (400V) Power board (200-208-230V)
4.14.01	FE290405 FE290402	Fuse 10.3X38 AM 10A (200-208-230V) Fuse 10.3X38 AM 4A (400V)
4.14.02	FE290409 FE290407	Fuse 10.3X38 AM 25A (200-208-230V) Fuse 10.3X38 AM 16A (400V)
4.14.03	FE290402 FE290401	Fuse 10.3X38 AM 4A (200-208-230V) Fuse 10.3X38 AM 2A (400V)
4.15	FE120261	Control board
4.16	FE080001 FE080000	Switch 20A (400V) Switch 32A (200-208-230V)
4.17	FM091197	RAL2004B. grey front panel
4.18	FM110340	Push button panel adhesive
4.19	FE120601	Membrane keyboard
4.20	FM510084	Hinge
4.21	FM091148	RAL7035B. grey panel
4.22	FM130003	Reticulated plate
4.23	FE440026 FE440025	Transformer 400VA (400V) Transformer 400VA (200-208-230V)
4.24	FE440628 FE440627	Transformer 2500VA (400V) Transformer 2500VA (200-208-230V)
4.25	FM095796	RAL7035B. grey machine left support
4.26	FM095794	RAL7035B. grey machine right support
4.27	FM770510	Wheel Ø100 with brake
4.28	FM770509	Wheel Ø100
4.30	S03A1301	Screened plate front support
4.33	FM095966	Support
4.34	FE430013	Safety thermostat (See the position 1.20)
4.35	FE260020	Ventilator

Version valid from serial number 3276 dated 10.2012

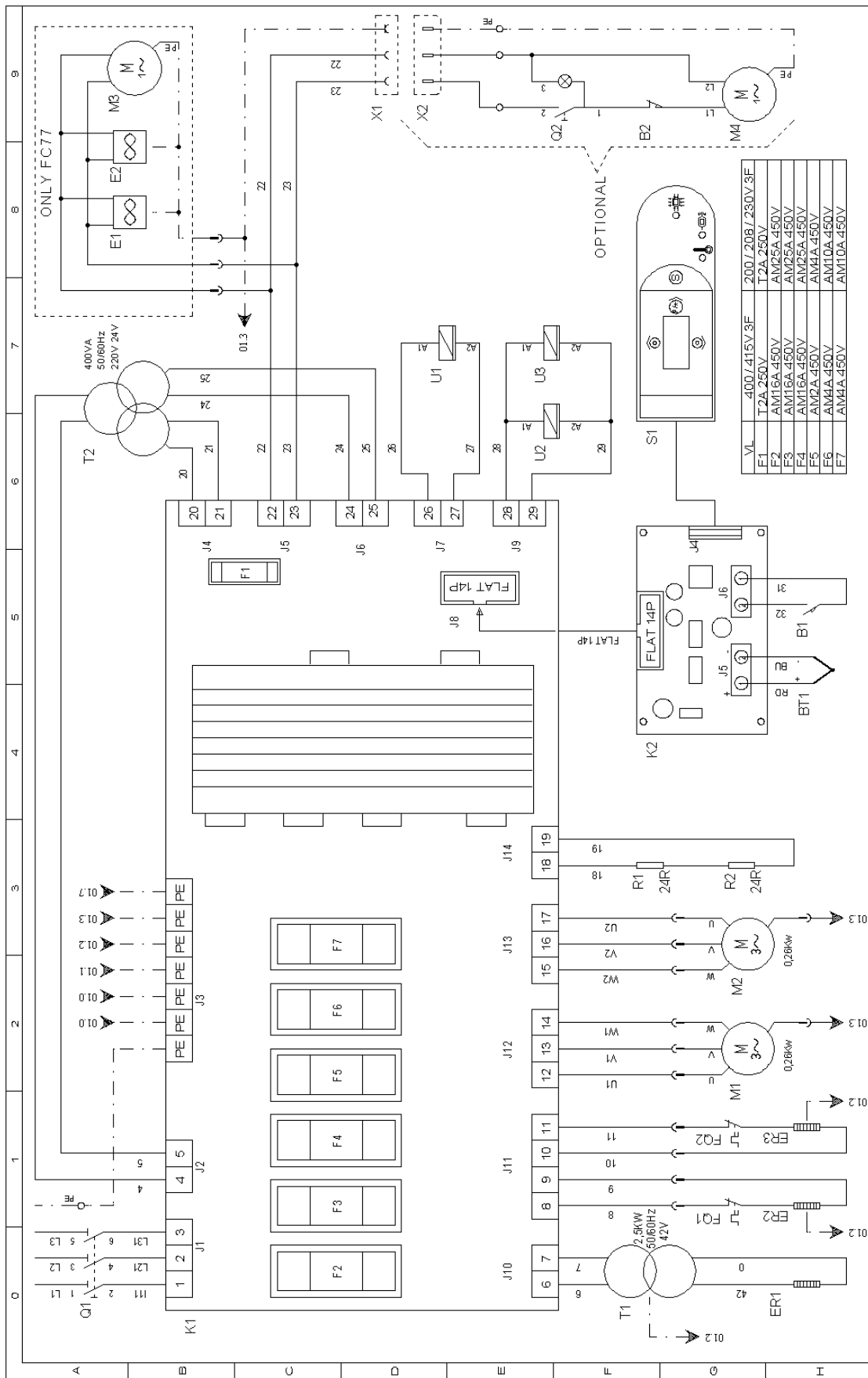


ITEMS DESCRIPTION (Optional)	SCHEME 5
---	-----------------

Pos.	Code	Description
5.01	AV030003	Rewinder group (optional)
5.02	FE310120	Cable 3X0,75X1500
5.03	FE190032	Switch
5.04	FM010041	Film rewinder shaft
5.05	FM160111	Washer
5.06	FE220105	Microswitch
5.07	FM290175	Rewinder support
5.08	FM160104	Ring nut
5.09	FM170161	Spring
5.10	FM120040	Movable flange
5.11	FM250128	Hub
5.12	FM120041	Fixed flange
5.13	FM280326	Plate
5.14	FM250074	Roller
5.15	FM030063	Rod
5.16	FM060027	Lever
5.17	FM290172	Lever support
5.18	FE220101	Microswitch guard
5.19	FM290107	Gearmotor support
5.20	FE250016	Gearmotor
5.21	FM095138	Case
5.22	FM160231	Film guiding ring
5.23	FM290525	Film guiding ring square
5.24	FM160231	Film guiding ring
5.25	S0K00407	Film guide kit



WIRING DIAGRAM 200-208-230-400V



PROGETTO:	FOGLIO 01		
CODICE:	DI 01		
DESEGNO NR: WDMF3501			
TITOLO: SCHEMA DI POTENZA			
DESEGNO NR: Boldotti	DATA: 17/06/2009		
REV	DATA	FIRMA	MODIFICA

WIRING DIAGRAM DESCRIPTION

B1	Cycle start limit switch
B2	Rewinder limit switch
BT1	Thermocouple
E1/2	Cooling fan
E3	Cooling fan
ER1	Sealing blade heater
ER2/3	Shrinking heater
FQ1/2	Safety thermostat
F1	Ventilator, cooling pump, rewinder fuse 5X20
F2/3/4	Line fuse 10.3X38
F5	Auxiliary transformer fuse 10.3X38
F6/7	Fan motor fuse 10.3X38
K1	Power board
K2	Control board
M1/2	Fan motor
M3	Cooling pump motor
M4	Rewinder motor
Q1	Motor brake resistor
Q2	Motor brake resistor
R1	Main switch
R2	Rewinder switch
S1	Membrane keyboard
T1	Cutting transformer
T2	Auxiliary transformer
U1	Shrinking magnet
U2/3	Sealing magnet
X1	Rewinder power supply socket
X2	Rewinder power supply plug



Minipack-torre S.p.A.

Via Provinciale, 54 - 24044 DALMINE (BG) - ITALY

Tel. (035) 563525 – Fax (035) 564945

E-mail: info@minipack-torre.it

Internet: www.minipack-torre.it