



Minipack-torre S.p.A.
Via Provinciale, 54 - 24044 Dalmine (BG) - Italy
Tel. (035) 563525 – Fax (035) 564945
E-mail: info@minipack-torre.it
[http:// www.minipack-torre.it](http://www.minipack-torre.it)

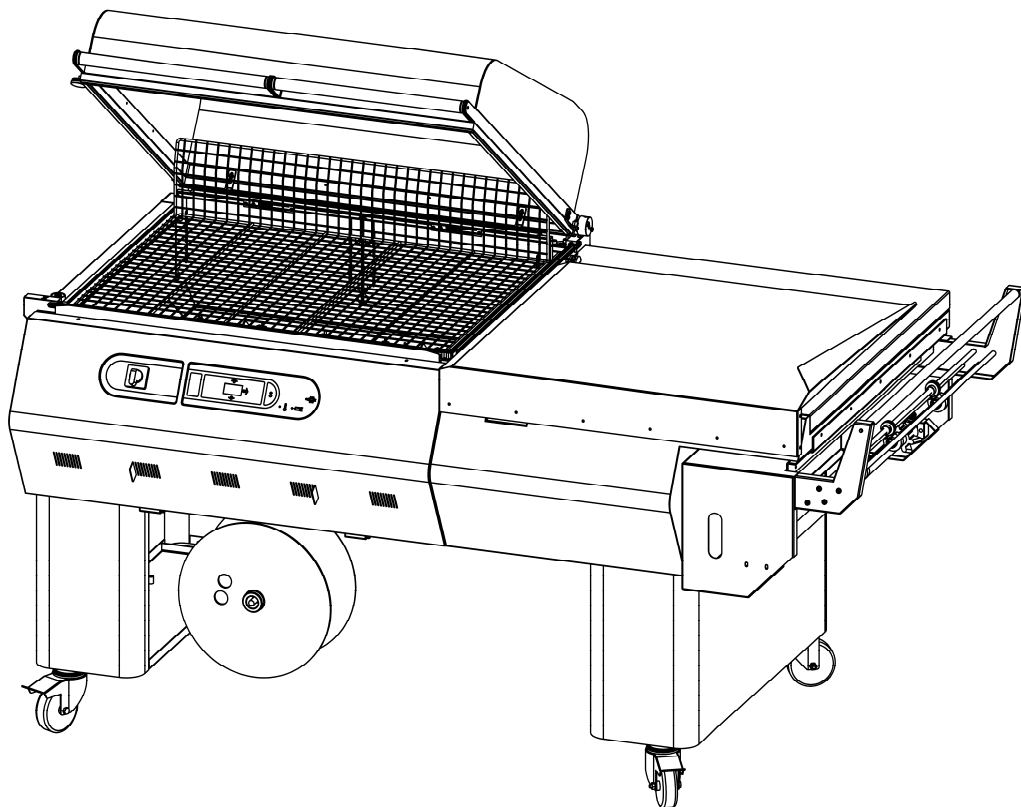


RP85

Spare parts catalogue

(Valid from serial number 790 dated 04.2010 up to 2900 dated 05.2012)

REV.01: On these machines we installed the following new parts: more powerful heat sink 2100W;
new safety thermostat (FE430006).



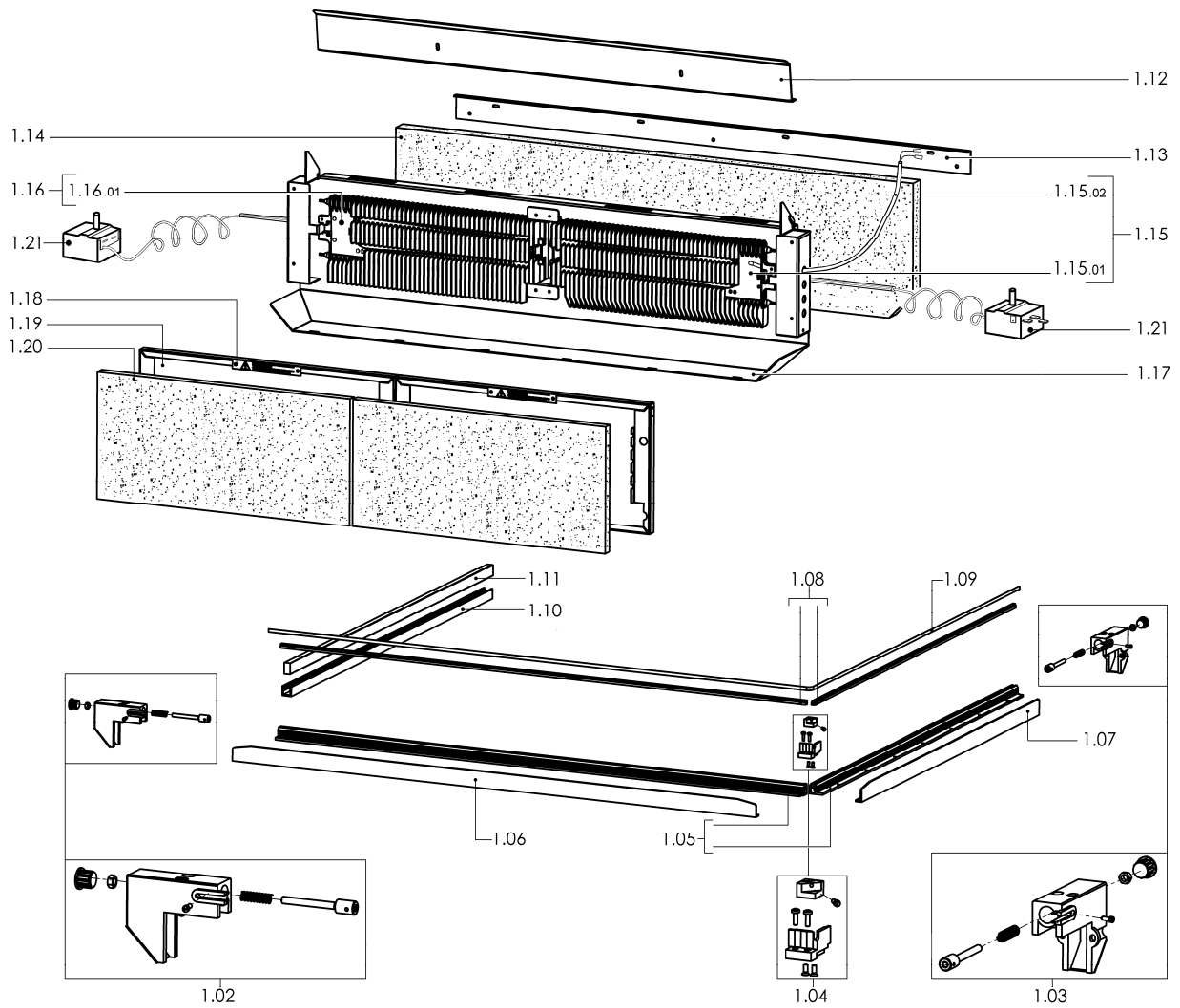
CAREFULLY READ THIS CATALOGUE BEFORE ORDERING ANY SPARE PART



DOC. N. FM112171
REV. 01
Ed: 07.2012

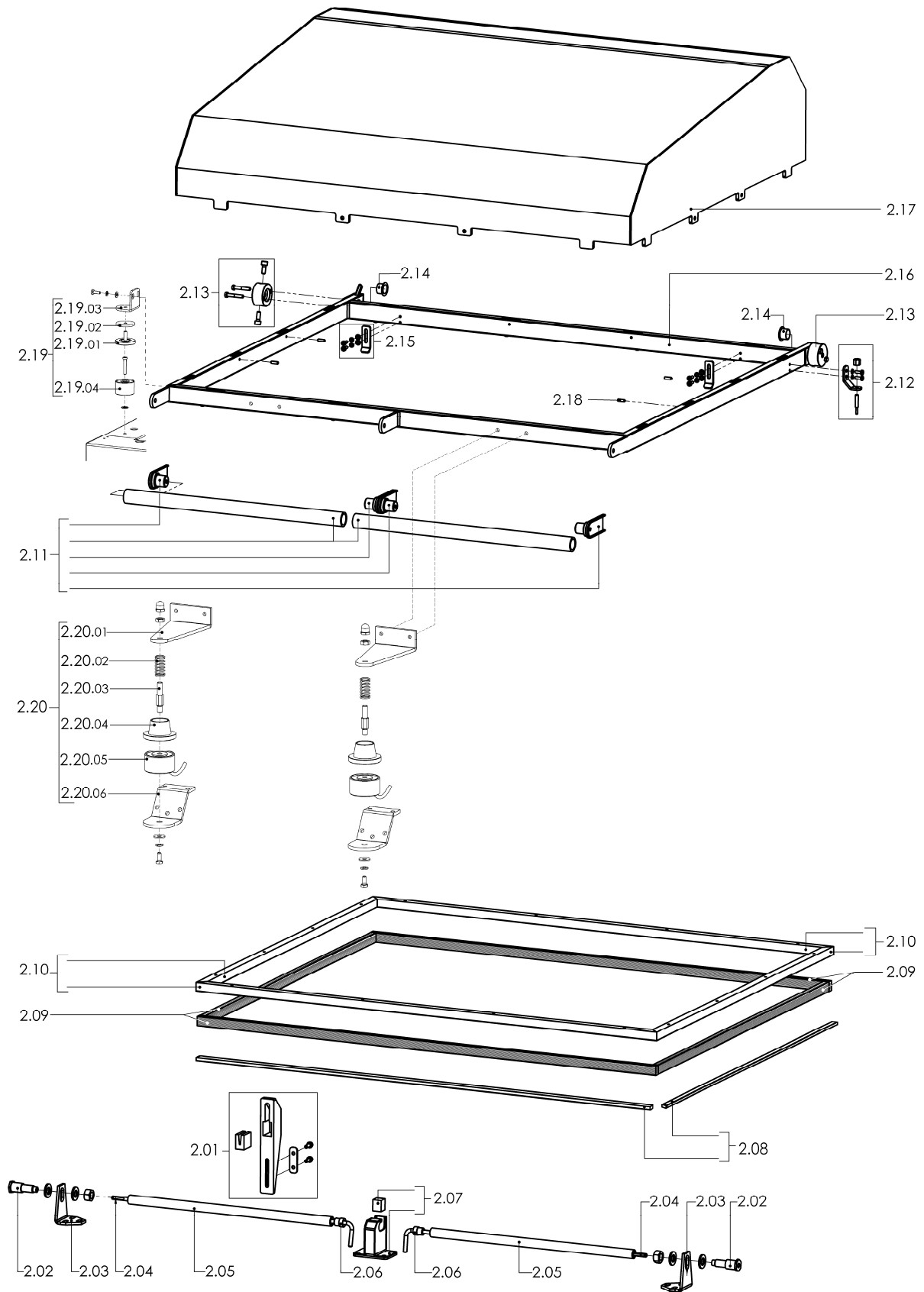
ITEMS DESCRIPTION	SCHEME 1
--------------------------	-----------------

Pos.	Code	Description
1.02	S0K00303	Front clamp kit
1.03	S0K00304	Rear clamp kit
1.04	S03A0306	Blade holder central clamp kit
1.05	S03A0309	Infill holder channel kit
1.06	S03A0901	Front guard kit
1.07	S03A0902	Side guard kit
1.08	S03A0310	Infill blocks kit
1.09	KR030001	Teflon-coated sealing blade
1.10	FM220269	Lower rubber holder side channel
1.11	FM350007	15X10 Lg.720 Neoprene rubber
1.12	FM281521	Heating chamber flap
1.13	FM091186	Rear reinforcement
1.14	FM195116	Rock wool panel
1.15	KR310A02	W2100 V230 Heat sink kit
	KR310D02	W2100 V200-208 Heat sink kit
	KR350B03	W2100 V400 Heat sink kit
1.15.01	FM390014	W2100 V230 Heat sink
	FM390013	W2100 V200-208 Heat sink
	FM390012	W2100 V400 Heat sink
1.15.02	FE435011	Thermocouple
1.16	KR350A04	W2100 V230 Left heat sink kit
	KR350D04	W2100 V200-208 Left heat sink kit
	KR350B04	W2100 V400 Left heat sink kit
1.16.01	FM390014	W2100 V230 Heat sink
	FM390013	W2100 V200-208 Heat sink
	FM390012	W2100 V400 Heat sink
1.17	FM091034	Heaters rear plate
1.18	FM110552	High temperature plate
1.19	FM091038	Heaters front plate
1.20	FM195115	Glass wool panel
1.21	FE430006	Safety thermostat



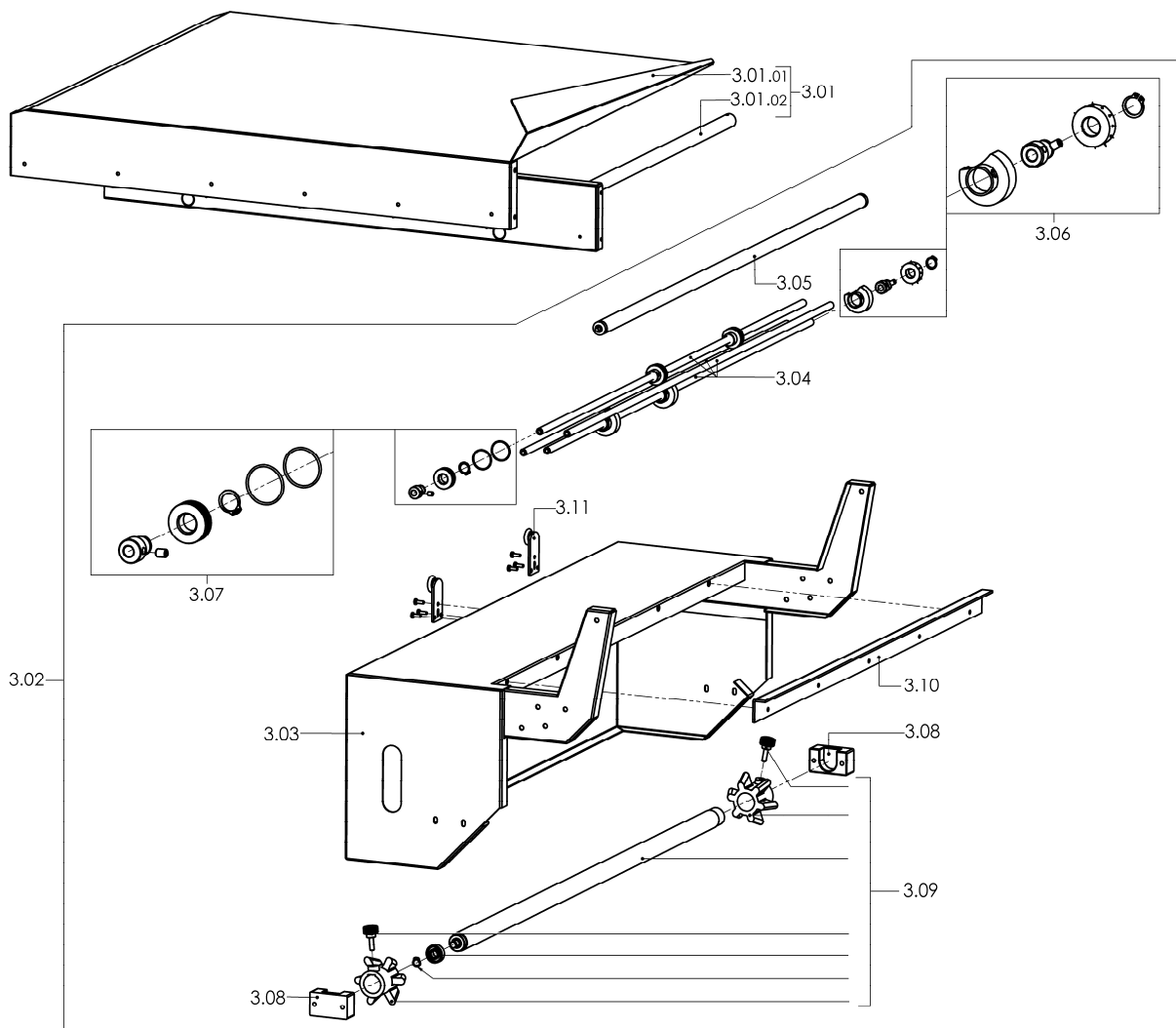
ITEMS DESCRIPTION	SCHEME 2
--------------------------	-----------------

Pos.	Code	Description
2.01	GOK00011	Hood shock absorber kit
2.02	SOK01002	Hood rotation pin kit
2.03	FM290101	Hood support
2.04	FM170003	Torsion bar
2.05	FM250103	Torsion bar tube
2.06	FM340100	Torsion bar bush
2.07	S03A1004	Torsion bar housing kit
2.08	KR030002	Teflon kit
2.09	FM350010	Neoprene rubber 17X10 L.3190mm
2.10	KR350053	Upper rubber holder channels kit
2.11	S03A0402	Handgrip kit x hood
2.12	SOK00406	Microswitch screw kit
2.13	SOK01001	Torsion bar blocking flange kit
2.14	FM540007	Bush
2.15	SOK00405	Heating chamber flap opening lever kit
2.16	FM300248	Upper hood frame
2.17	FM081030	Upper hood h.200mm (standard)
	FM081035	Upper hood h.300mm (optional)
	FM081036	Upper hood h.490mm (optional)
2.18	FM852207	M4X14 screw
2.19	MR350001	Magnet pressing group (standard)
2.19.01	FM160026	Electromagnet contrast
2.19.02	FM350011	Electromagnet contrast washer
2.19.03	FM280011	Electromagnet contrast square
2.19.04	FE130013	Electromagnet
2.20	MS310001	Sealing magnet group (optional)
2.20.01	FM290156	Magnet contrast support
2.20.02	FM170105	Compression spring
2.20.03	FM200065	Electromagnet contrast pin
2.20.04	FM160032	Electromagnet contrast
2.20.05	FE130010	Electromagnet
2.20.06	FM290155	Magnet support



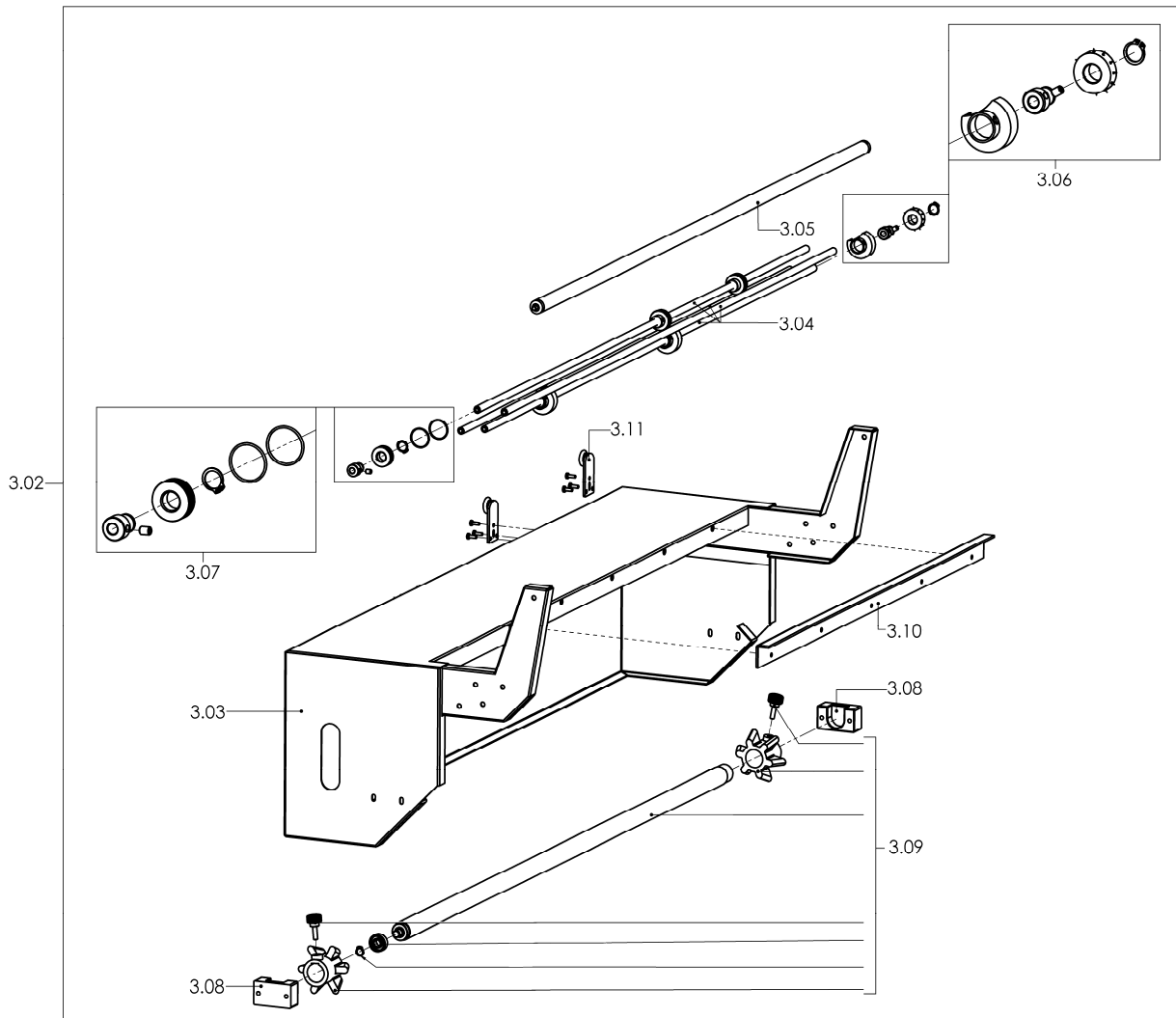
ITEMS DESCRIPTION	SCHEME 3
--------------------------	-----------------

Pos.	Code	Description
3.01	PC35B001	RAL7035B. packaging plate pre-assembly
3.01.01	FM090178	RAL7035B. packaging plate
3.01.02	FM300003	Packaging plate frame
3.01.01	FM090162	Inox packaging plate (optional)
3.02	PB35B001	RAL7035B. roll support pre-assembly
3.03	FM091190	RAL7035B. roll support
3.04	FM030021	Microperforator rod
3.05	FM710318	Film drive roller
3.06	S03A0605	Microperforator with needles kit
3.07	S0K00608	Slotted microperforator kit
3.08	FM340525	Reel holder roller support
3.09	S03A0602	Film roll tube kit
3.10	FM220501	Roll support guide corner
3.11	FM660002	Wheeled trolley



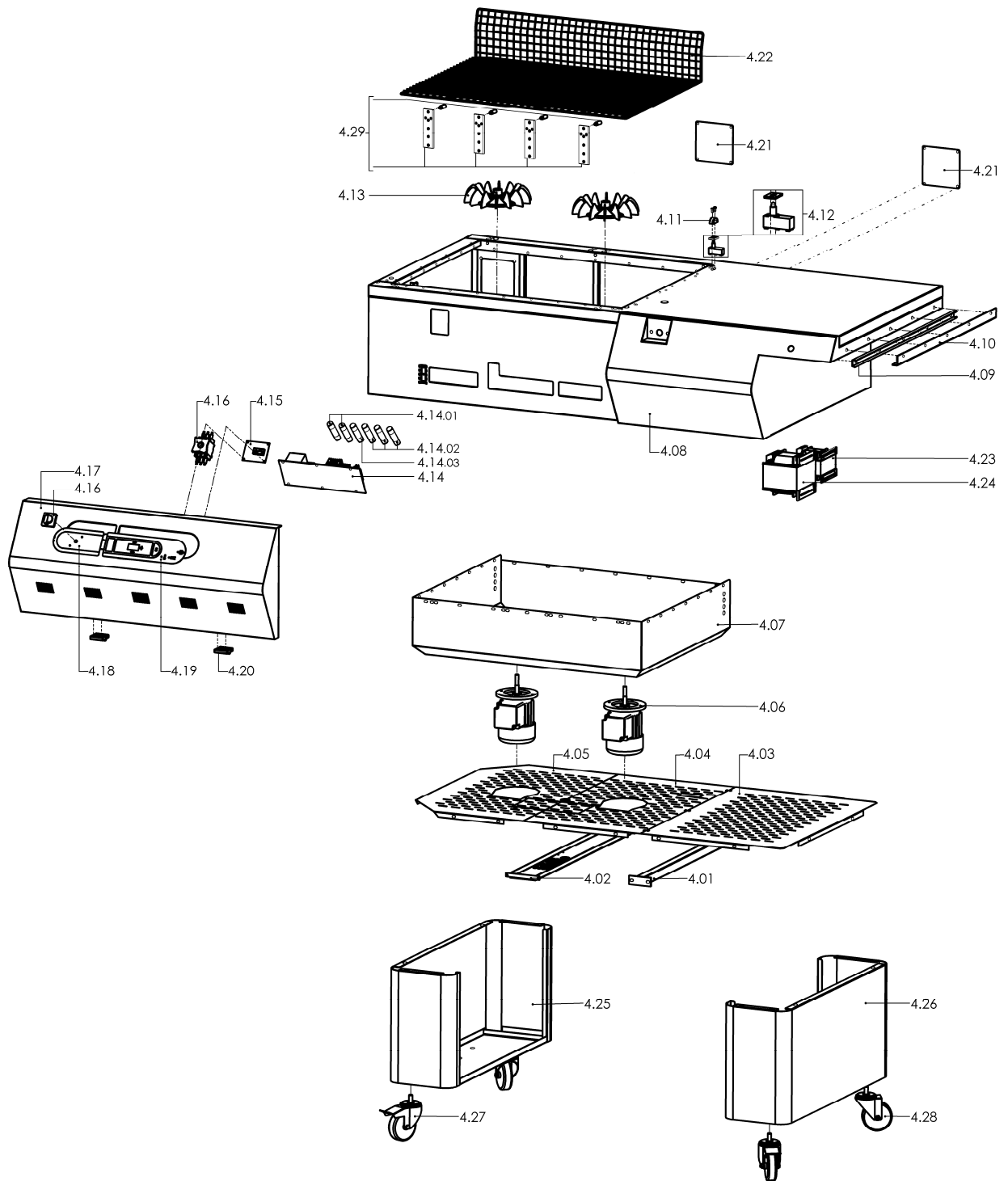
ITEMS DESCRIPTION (Optional)	SCHEME 3.1
---	-------------------

Pos.	Code	Description
3.02	PB35B002	RAL7035B. larger roll support pre-assembly
3.03	FM091199	RAL7035B. larger roll support
3.04	FM030035	Microperforator rod
3.05	FM710313	Film drive roller
3.06	S03A0605	Microperforator with needles kit
3.07	S0K00608	Slotted microperforator kit
3.08	FM340525	Reel holder roller support
3.09	No code	Film roll tube kit
3.10	FM220501	Roll support guide corner
3.11	FM660002	Wheeled trolley



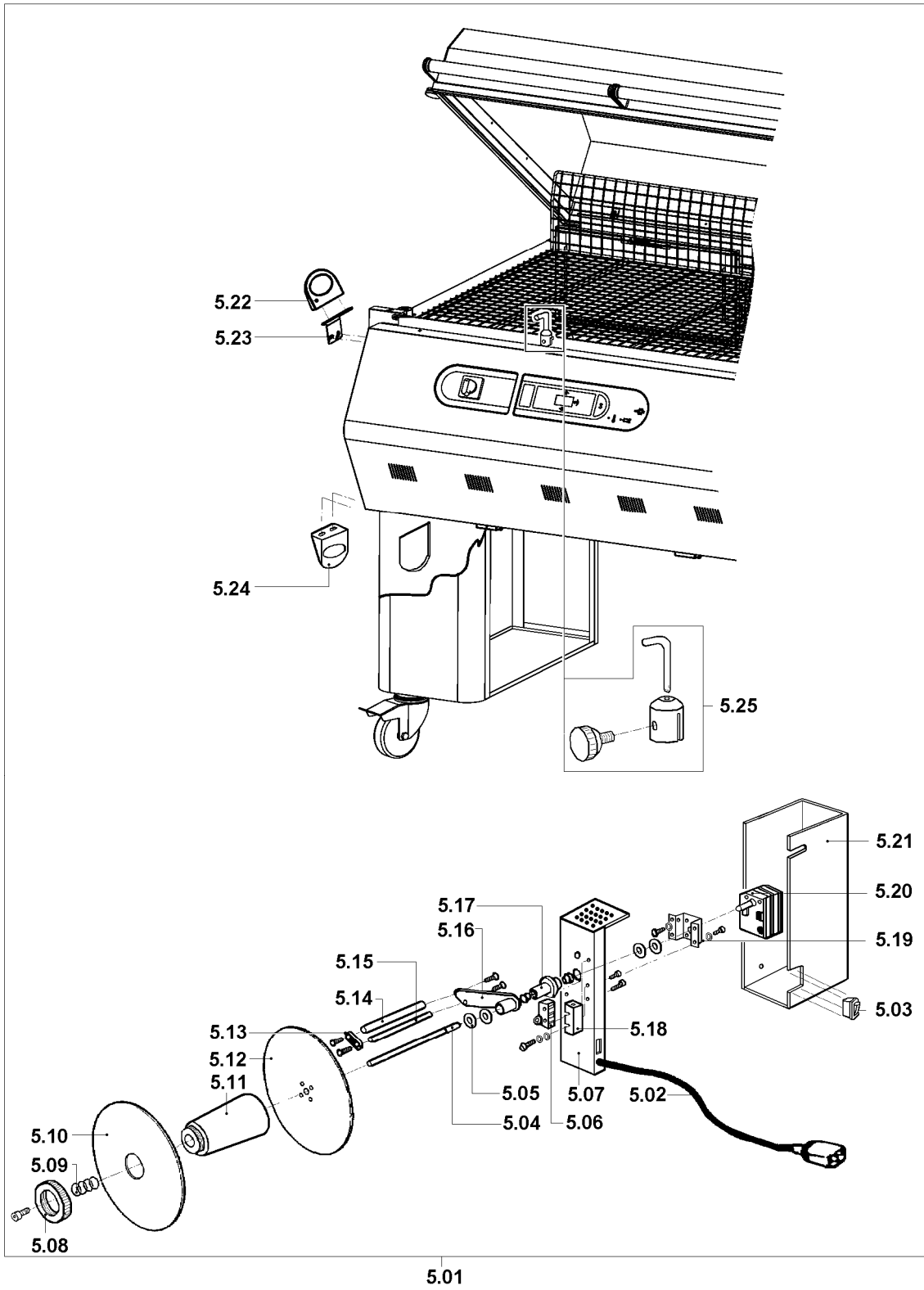
ITEMS DESCRIPTION	SCHEME 4
--------------------------	-----------------

Pos.	Code	Description
4.01	FM300018	Crosspiece
4.02	FM300141	Rewinder crosspiece
4.03	FM090665	Right lower cover
4.04	FM090627	Central lower cover
4.05	FM090626	Left lower cover
4.06	FE240004 FE240005 FE240006	Motor 200V 50Hz 3Ph Motor 208V 60Hz 3Ph Motor 230-400V 50Hz 3Ph
4.07	FM091033	Lower hood
4.08	FM091193	RAL7035B. fairing
4.09	FM140001	"ROLLGE 150" channel
4.10	FM220501	Guide corner
4.11	FM230002	Microswitch guard
4.12	S0K01208	Hood microswitch kit
4.13	S0K01120	Fan kit
4.14	FE120257 FE120262	Power board (400V) Power board (200-208-230V)
4.14.01	FE290405 FE290402	Fuse 10.3X38 AM 10A (200-208-230V) Fuse 10.3X38 AM 4A (400V)
4.14.02	FE290409 FE290407	Fuse 10.3X38 AM 25A (200-208-230V) Fuse 10.3X38 AM 16A (400V)
4.14.03	FE290402 FE290401	Fuse 10.3X38 AM 4A (200-208-230V) Fuse 10.3X38 AM 2A (400V)
4.15	FE120261	Control board
4.16	FE080001 FE080000	Switch 20A (400V) Switch 32A (200-208-230V)
4.17	FM091188	RAL7035B. front panel
4.18	FM110340	Push button panel adhesive
4.19	FE120601	Membrane keyboard
4.20	FM510084	Hinge
4.21	FM091148	RAL7035B. rear panel
4.22	FM130003	Reticulated plate
4.23	FE440026 FE440025	Transformer 400VA (400V) Transformer 400VA (200-208-230V)
4.24	FE440628 FE440627	Transformer 2500VA (400V) Transformer 2500VA (200-208-230V)
4.25	FM095796	RAL7035B. machine left support
4.26	FM095794	RAL7035B. machine right support
4.27	FM770510	Wheel Ø100 with brake
4.28	FM770509	Wheel Ø100
4.29	S03A1301	Screened plate front support

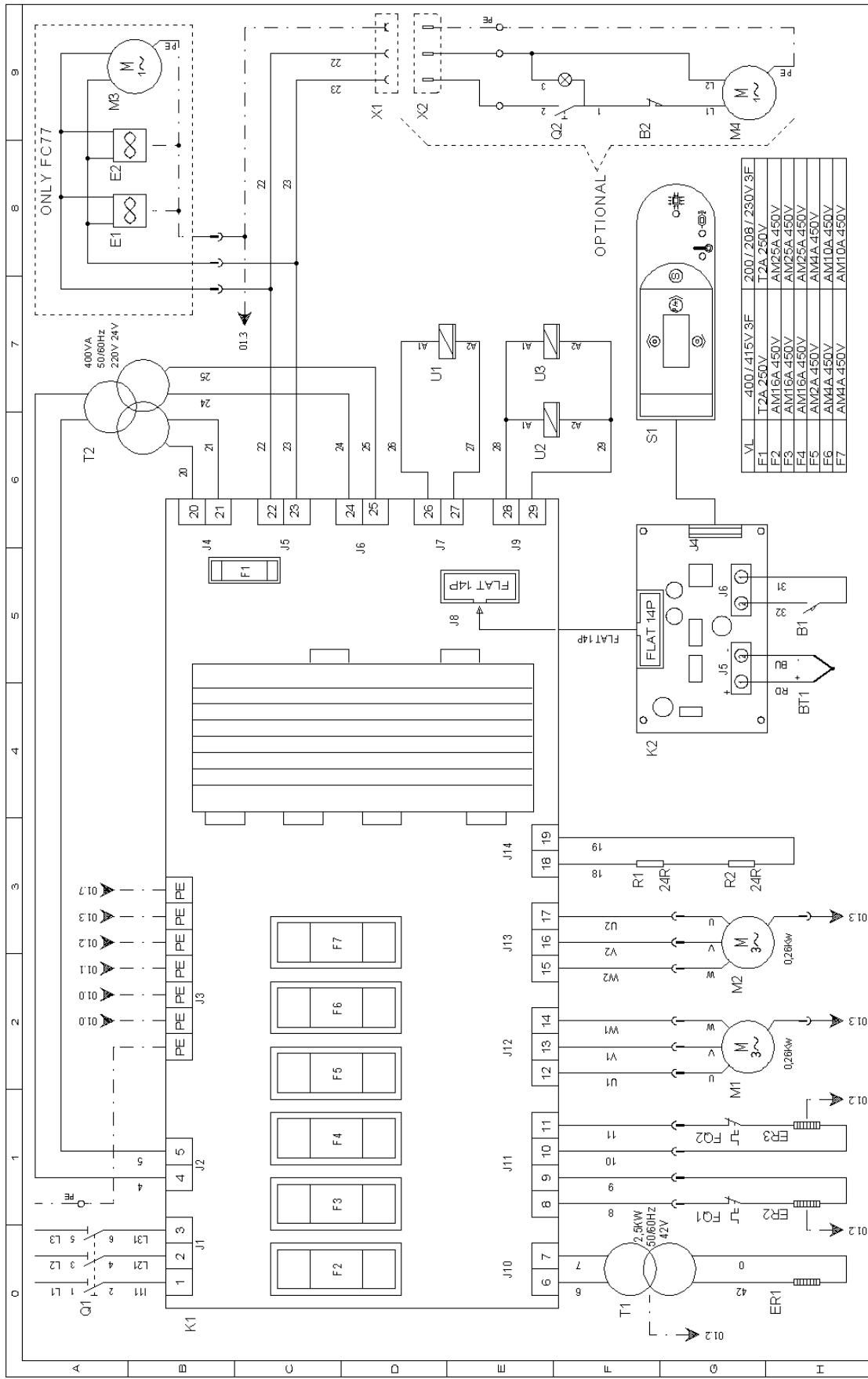


ITEMS DESCRIPTION (Optional)	SCHEME 5
---	-----------------

Pos.	Code	Description
5.01	AV030003	<i>Rewinder group (optional)</i>
5.02	FE310120	<i>Cable 3X0,75X1500</i>
5.03	FE190032	<i>Switch</i>
5.04	FM010041	<i>Film rewinder shaft</i>
5.05	FM160111	<i>Washer</i>
5.06	FE220105	<i>Microswitch</i>
5.07	FM290175	<i>Rewinder support</i>
5.08	FM160104	<i>Ring nut</i>
5.09	FM170161	<i>Spring</i>
5.10	FM120040	<i>Movable flange</i>
5.11	FM250128	<i>Hub</i>
5.12	FM120041	<i>Fixed flange</i>
5.13	FM280326	<i>Plate</i>
5.14	FM250074	<i>Roller</i>
5.15	FM030063	<i>Rod</i>
5.16	FM060027	<i>Lever</i>
5.17	FM290172	<i>Lever support</i>
5.18	FE220101	<i>Microswitch guard</i>
5.19	FM290107	<i>Gearmotor support</i>
5.20	FE250016	<i>Gearmotor</i>
5.21	FM095138	<i>Case</i>
5.22	FM160231	<i>Film guiding ring</i>
5.23	FM290525	<i>Film guiding ring square</i>
5.24	FM160231	<i>Film guiding ring</i>
5.25	S0K00407	<i>Film guide kit</i>



WIRING DIAGRAM 200-208-230-400V



PROGETTO:	FOGLIO 01		
CODICE:	DI 01		
DESEGN. NR:	WDMF3501		
TITOLO:	SCHEMA DI POTENZA		
DESEGNATORE:	Boldoni		
DATA:	17/06/2009		
REV	DATA	FIRMA	MODIFICA

WIRING DIAGRAM DESCRIPTION

B1	Cycle start limit switch
B2	Rewinder limit switch
BT1	Thermocouple
E1/2	Cooling fan
E3	Cooling fan
ER1	Sealing blade heater
ER2/3	Shrinking heater
FQ1/2	Safety thermostat
F1	Ventilator, cooling pump, rewinder fuse 5X20
F2/3/4	Line fuse 10.3X38
F5	Auxiliary transformer fuse 10.3X38
F6/7	Fan motor fuse 10.3X38
K1	Power board
K2	Control board
M1/2	Fan motor
M3	Cooling pump motor
M4	Rewinder motor
Q1	Motor brake resistor
Q2	Motor brake resistor
R1	Main switch
R2	Rewinder switch
S1	Membrane keyboard
T1	Cutting transformer
T2	Auxiliary transformer
U1	Shrinking magnet
U2/3	Sealing magnet
X1	Rewinder power supply socket
X2	Rewinder power supply plug



Minipack-torre S.p.A.

Via Provinciale, 54 - 24044 DALMINE (BG) - ITALY

Tel. (035) 563525 – Fax (035) 564945

E-mail: info@minipack-torre.it

Internet: www.minipack-torre.it