



Minipack-torre S.p.A.

Via Provinciale, 54 - 24044 Dalmine (BG) - Italy

Tel. (035) 563525 – Fax (035) 564945

E-mail: info@minipack-torre.it

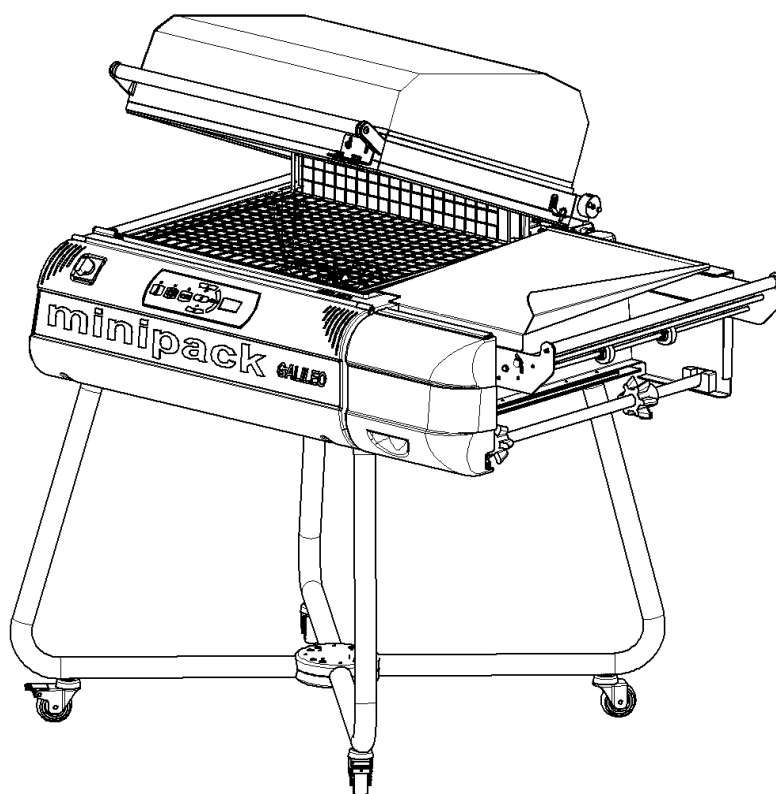
<http://www.minipack-torre.it>



Galileo Classic Galileo Office Galileo Food

Spare parts catalogue

(Valid from serial number 3068 dated 04.2010: new safety thermostat FE430006)



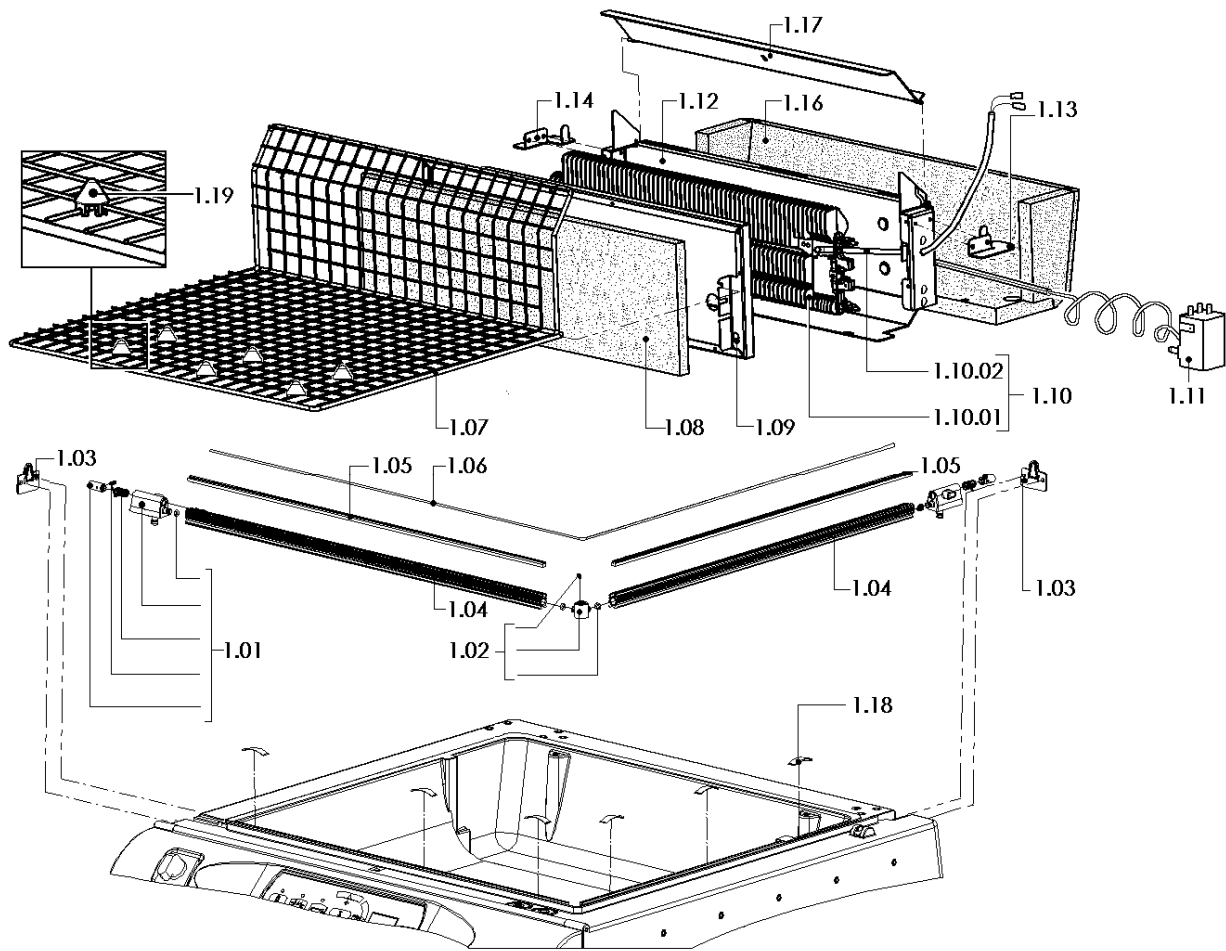
CAREFULLY READ THIS CATALOGUE BEFORE ORDERING ANY SPARE PART



DOC. N. FM112109
REV. 04
ED. 01.2012

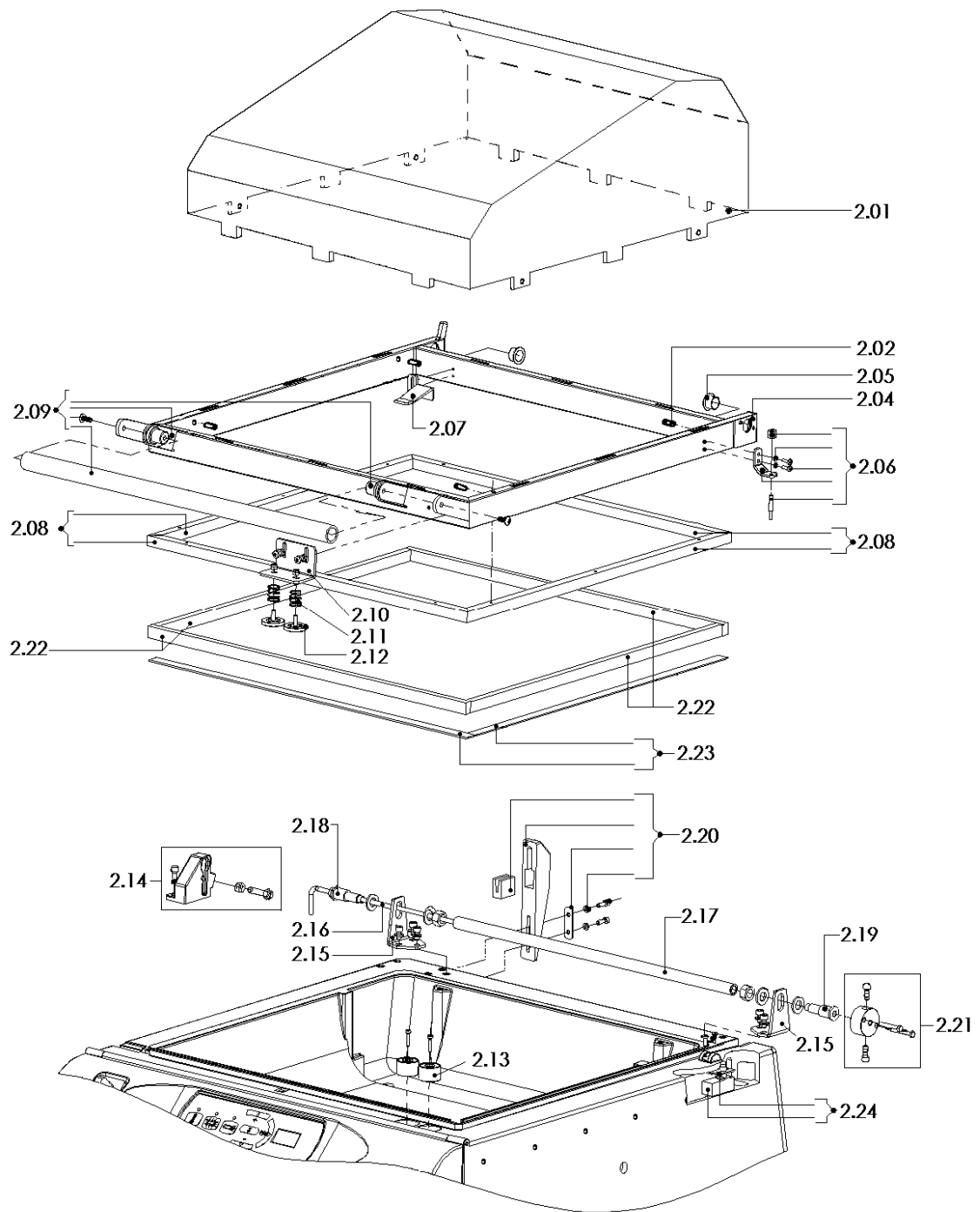
ITEMS DESCRIPTION	SCHEME 1
--------------------------	-----------------

Pos.	Code	Description
1.01	P0K00309	Front and back terminal pre-assembly
1.02	P0K00350	Central terminal pre-assembly
1.03	FM340505	Plug x blade stretcher support
1.04	FM220630	Insulator holder section
1.05	FM050118	Blade holder insulator
1.06	KR020001	Sealing blade
1.07	FM130016	Reticulated plate
1.08	FM195104	Glass wool panel
1.09	FM090296	Front heater plate
1.10	KR260A11	W2550 V230 Heat sink kit
	KR260D11	W2800 V200 Heat sink kit
1.10.01	FM390020	W2550 V230 Heat sink
	FM390023	W2800 V200 Heat sink
1.10.02	FE435011	Thermocouple
1.11	FE430006	Safety thermostat
1.12	FM091208	Back heater plate
1.13	FM090298	Right heating chamber cover
1.14	FM090299	Left heating chamber cover
1.16	FM195105	Insulating panel
1.17	FM281334	Heating chamber paddle
1.18	FM170179	Constrast spring
1.19	FM350604	Product support



ITEMS DESCRIPTION	SCHEME 2
--------------------------	-----------------

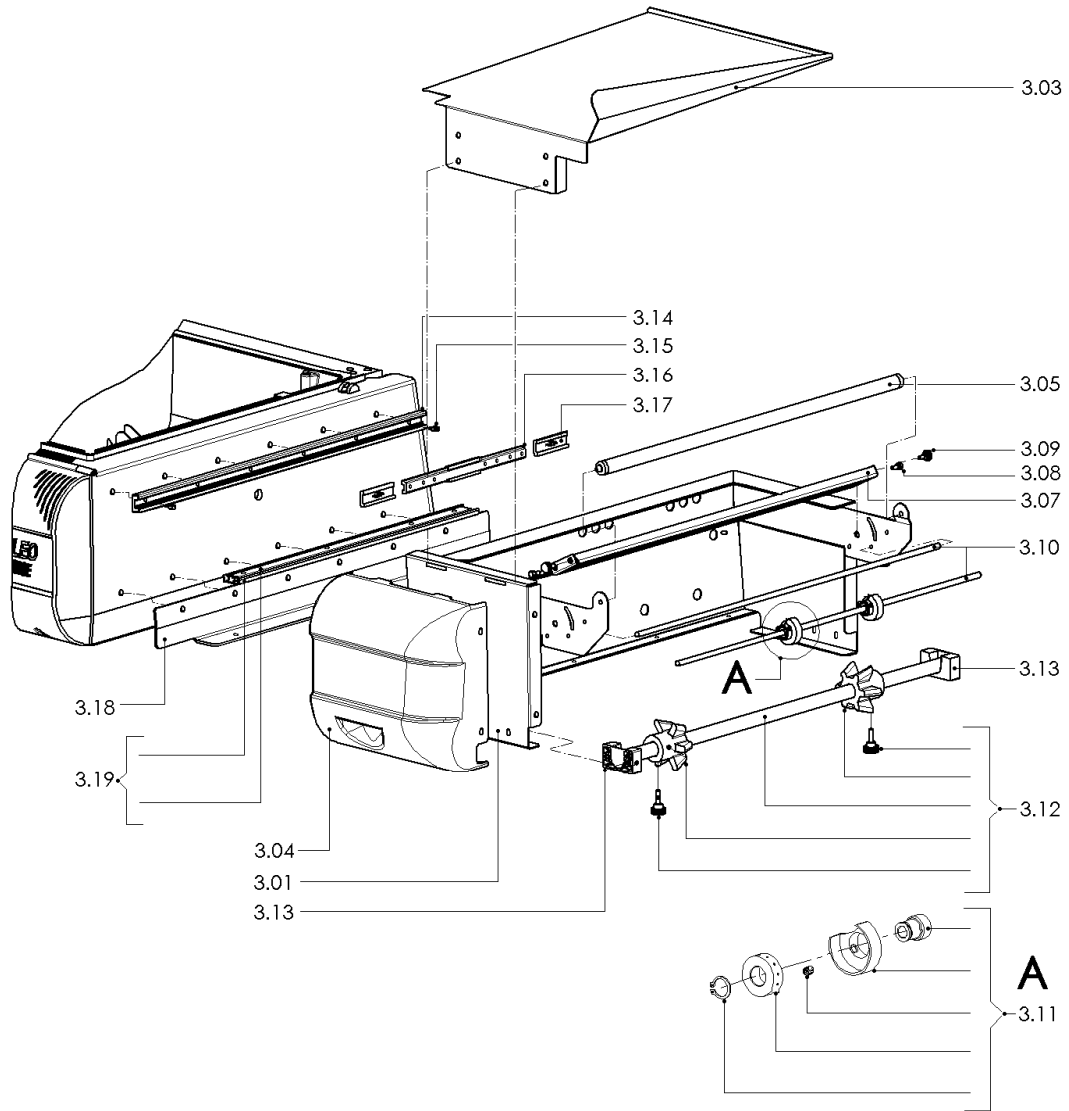
Pos.	Code	Description
2.01	FM081043	Upper hood (valid from serial number 2988 dated 01.2010)
2.02	FM852207	M4X14 screw
2.04	FM300250	Frame for upper hood (valid from serial number 2988 dated 01.2010)
2.05	FM540007	Bush
2.06	KR260007	Tracer point kit x microswitch
2.07	KR260013	Paddle opening lever kit
2.08	KR260009	Upper rubber holder section kit
2.09	S02A0402	Handgrip kit x hood
2.10	FM290523	Electromagnet contrast support
2.11	FM170177	Compression spring
2.12	FM160026	Electromagnet contrast
2.13	FE130013	Elettromagnet
2.14	KR260010	Torsion bar housing kit
2.15	FM290101	Hood support
2.16	FM170002	Torsion bar
2.17	FM250102	Tube x torsion bar
2.18	S0K01005	Left pin kit x hood rotation
2.19	S0K01002	Right pin kit x hood rotation
2.20	G0K00011	Hood shock absorber kit
2.21	S0K01001	Flange kit x torsion bar
2.22	FM350095	Neoprene rubber 17x10 L.2300mm
2.23	KR020002	Upper hood teflon kit
2.24	S0K01208	Hood microswitch kit
	S0K01209	Hood microswitch kit (ETL version)



ITEMS DESCRIPTION	SCHEME 3
--------------------------	-----------------


Pos.	Code	Description
3.01	FM090758 FM090759	Reel support RAL2004L. Reel support RAL7035L.
3.03	FM090860 FM090861 FM090862	Packaging plate RAL2004L. Packaging plate RAL7035L. Stainless steel packaging plate
3.04	FM081013 FM081016	Front panel x reel support RAL2004B. Front panel x reel support RAL7035B.
3.05	FM710306	Transmission roller
3.07	FM095747	Micropuncher needle contrast
3.08	FM200267	Pin
3.09	FM510064	Handwheel M5X10
3.10	FM030073	Micropuncher rod
3.11	S0K00605	Small wheel kit with needles
3.12	KR260002	Reel holder roller kit
3.13	FM340510	Support x reel holder roller
3.14	FM220609	Profile x guide
3.15	FM200265	Clamping pin
3.16	FM220610	Profile x internal guide
3.17	FM340506	Sliding block x internal guide profile
3.18	FM090966 FM090971	Square x guide RAL2004L. Square x guide RAL7035L.
3.19	KR260003	Reel support guide kit

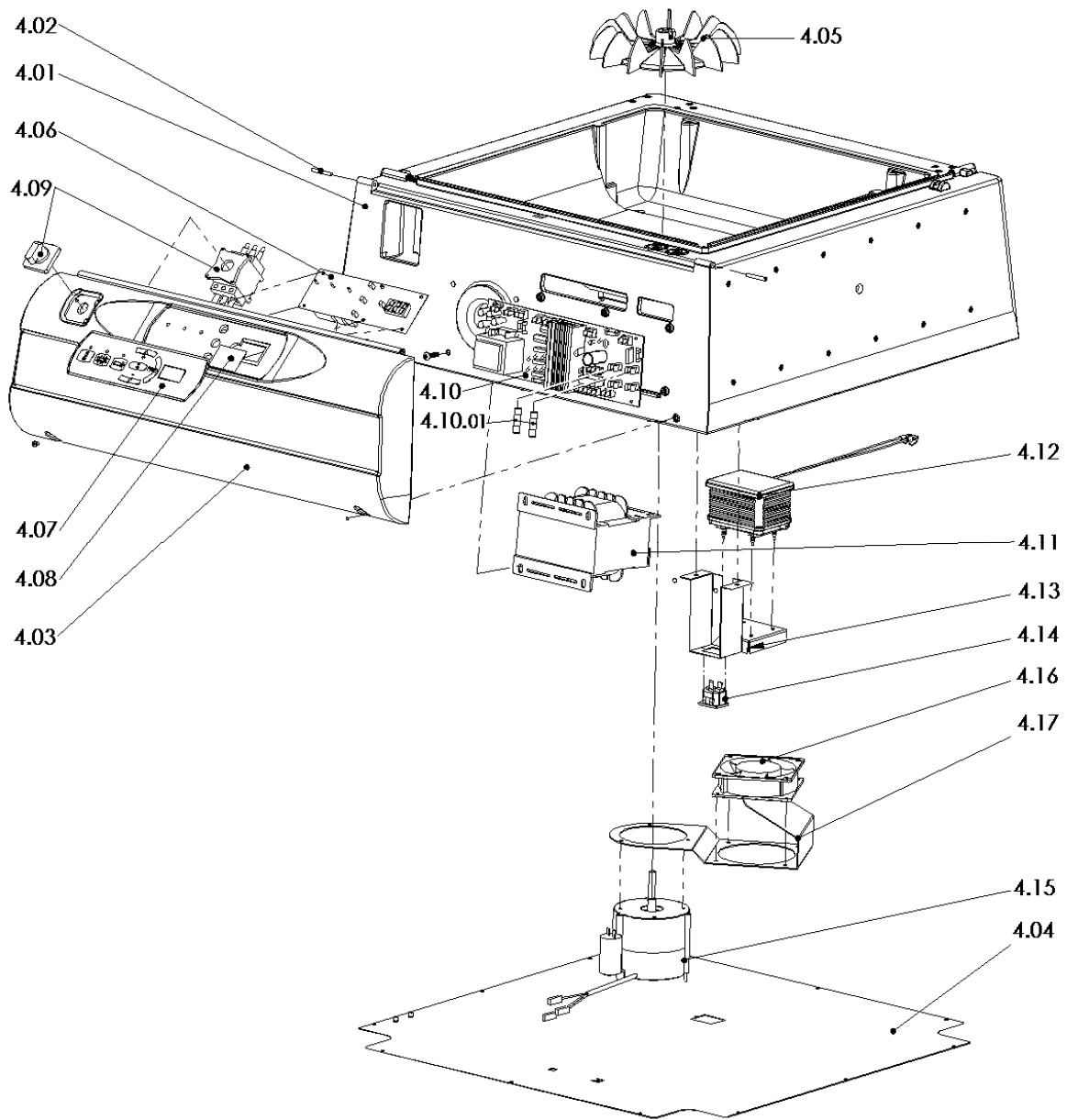
(single packaging plate version)



ITEMS DESCRIPTION	SCHEME 4
--------------------------	-----------------

Pos.	Code	Description
4.01	FM081010 FM081014	Fairing RAL2004B. Fairing RAL7035B.
4.02	FM200266	Pin x hinge
4.03	FM081011 FM081015	Front panel x fairing RAL2004B. Front panel x fairing RAL7035B.
4.04	FM090963	Lower cover
4.05	KR260001	Fan kit
4.06	FE120263	Control board (valid from serial number 2843 dated 07.2009)
	FE120380 (old)	Control board (valid up to serial number 2842 dated 07.2009)
4.07	FE120605	Membrane keyboard (valid from serial number 2843 dated 07.2009)
	FM110300 (old)	Adhesive membrane x control board (valid up to serial number 2842 dated 07.2009)
4.08	FM230507	Small glass x display (valid up to serial number 2842 dated 07.2009)
4.09	FE080001	Main switch
4.10	FE120264	Power board 230V (valid from serial number 2843 dated 07.2009)
	FE120381 (old)	Power board 230V with fuses (valid up to serial number 2842 dated 07.2009)
	FE120388 (old)	Power board 230V with fuses (ETL version) (valid up to serial number 2842 dated 07.2009)
	FE120383	Power board 200V
4.10.01	FE290407 FE290701	Fuse 10.3X38 AM 16A (230V) Fuse 10.3X38 FNM 15A (230V ETL)
4.11	FE440616 FE440556	Transformer 2400VA 200-230V Transformer 700VA 230V (ETL version)
4.12	FE280005	Pump 230V (valid from serial number 558 dated 03.2006)
	FE280007	Pump 200V
4.13	FM090970	Pump support (valid from serial number 558 dated 03.2006)
4.14	FE310051	In-built socket
4.15	FE241020 FE241021	Single-phase motor 230V Single-phase motor 200V
4.16	FE260020 FE260022	Ventilator 230V Ventilator 200V
4.17	FM090982	Ventilator support (valid from serial number 680 dated 04.2006)

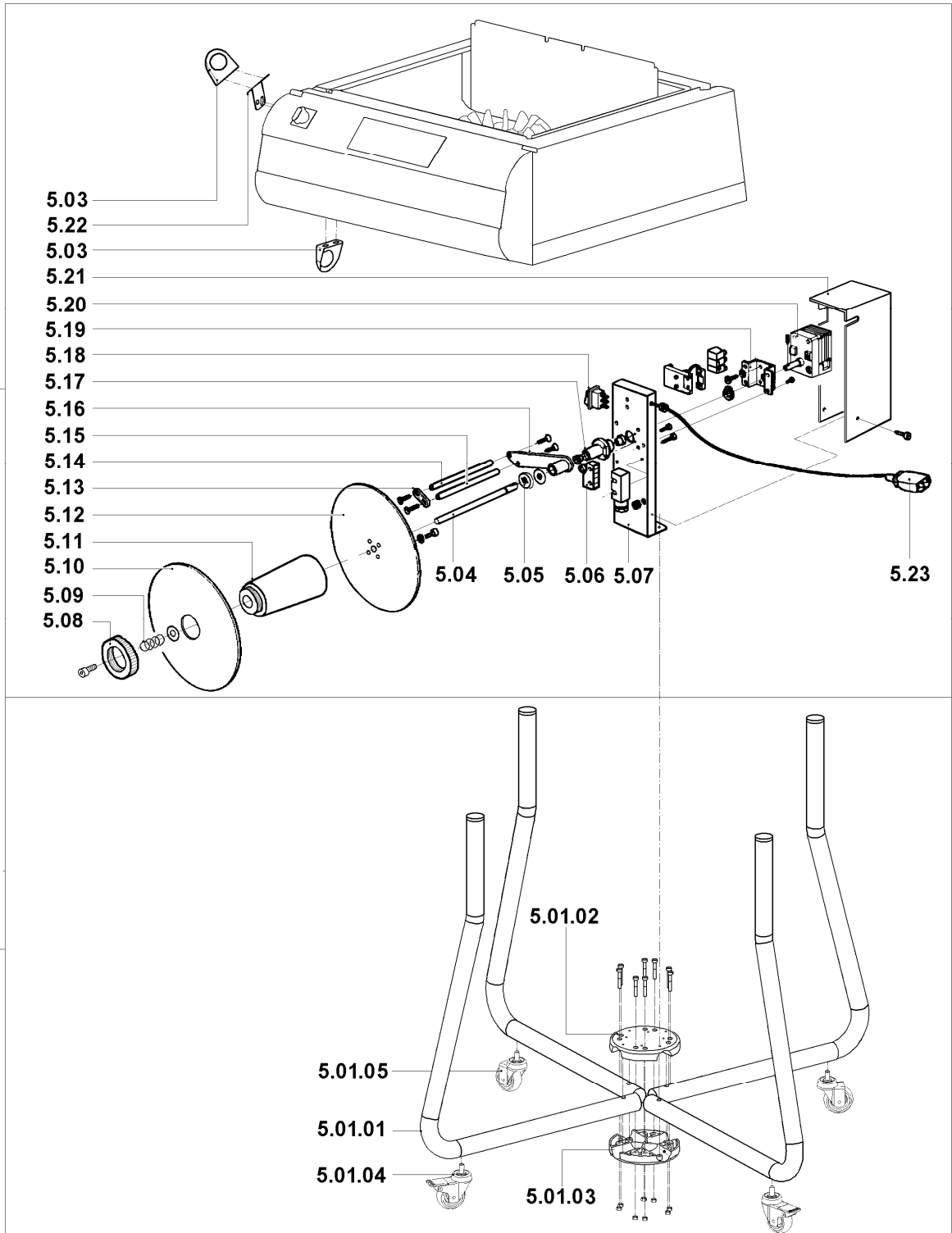
	<p style="color: red;">Machines from serial nr 2888 up to 2895 and from serial nr 2898 up to 2905 dated 10.2009 have been produced according to the previous configuration, that is with control board (code FE120380), adhesive membrane (code FM110300) and power board (code FE120381).</p>
---	--



ITEMS DESCRIPTION	SCHEME 5
--------------------------	-----------------

Pos.	Code	Description
5.01	CA26N001 CA26I001	Black trolley RAL9005B. Inox trolley.
5.01. 01	FM300214 FM300216	Support RAL9005B. Chromium-plated support
5.01. 02	FM040176	Upper flange RAL9005B.
5.01. 03	FM040177	Lower flange RAL9005B.
5.01. 04	FM770546	Wheel Ø60 with brake
5.01. 05	FM770545	Wheel Ø60

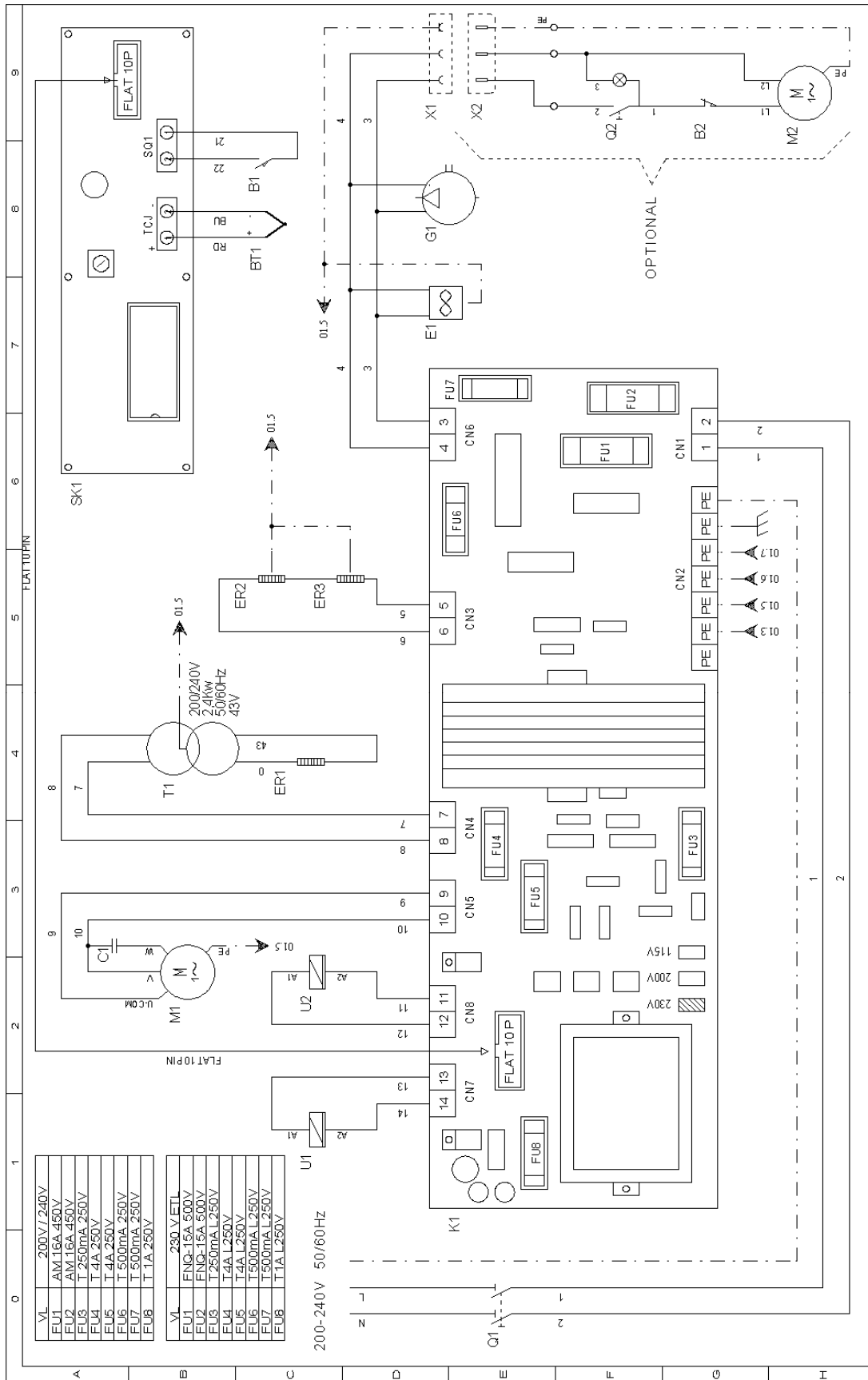
5.02	AV260A01	200-230V Rewinder group (optional)
5.03	FM160231	Film guiding ring
5.04	FM010041	Film rewinder shaft
5.05	FM160111	Washer
5.06	FE220105	Microswitch
5.07	FM290175	Rewinder support
5.08	FM160104	Ring nut
5.09	FM170161	Spring
5.10	FM120040	Movable flange
5.11	FM250128	Hub
5.12	FM120041	Fixed flange
5.13	FM280326	Plate
5.14	FM250074	Roller
5.15	FM030063	Rod
5.16	FM060027	Lever
5.17	FM290172	Lever support
5.18	FE190032	Switch
5.19	FM290107	Gearmotor support
5.20	FE250016	200-220V gearmotor
5.21	FM095138	Case
5.22	FM290525	Square
5.23	FE310121	Cable 3X0,75X1000



<i>B1</i>	<i>Cycle start limit switch</i>
<i>B2</i>	<i>Rewinder limit switch</i>
<i>BT1</i>	<i>Thermocouple</i>
<i>E1</i>	<i>Cooling fan</i>
<i>ER1</i>	<i>Sealing blade heater</i>
<i>ER2/3</i>	<i>Heaters</i>
<i>FU1/2</i>	<i>Line fuse 10.3X38</i>
<i>FU3</i>	<i>Card supplier fuse 5X20</i>
<i>FU4/5</i>	<i>Fan fuse 5X20</i>
<i>FU6/7</i>	<i>Ventilator fuse, cooling pump, rewinder 5X20</i>
<i>FU8</i>	<i>Magnet fuse 5X20</i>
<i>G1</i>	<i>Cooling pump</i>
<i>K1</i>	<i>Electronic control board</i>
<i>M1</i>	<i>Fan motor</i>
<i>M2</i>	<i>Rewinder motor</i>
<i>Q1</i>	<i>Main switch</i>
<i>Q2</i>	<i>Rewinder switch</i>
<i>SK1</i>	<i>Control board</i>
<i>T1</i>	<i>Cutting transformer</i>
<i>U1</i>	<i>Shrinking magnet</i>
<i>U2</i>	<i>Sealing magnet</i>
<i>X1</i>	<i>Rewinder power supply socket</i>
<i>X2</i>	<i>Rewinder power supply plug</i>

WIRING DIAGRAM

SCHEME 6



PROGETTO:	FOGLIO 01		
CODICE:	DI 01		
DISEGNO NR:	WDMF2601		
TITOLO:	SCHEMA ELETTRICO		
DISEGNATORE: Bidleri	DATA: 12.10.2005		
REV	DATA	FIRMA	MODIFICA



Minipack-torre S.p.A.

Via Provinciale, 54 - 24044 DALMINE (BG) - ITALY

Tel. (035) 563525 – Fax (035) 564945

E-mail: info@minipack-torre.it

Internet: www.minipack-torre.it