



Minipack-torre S.p.A.
Via Provinciale, 54 - 24044 Dalmine (BG) - Italy
Tel. (035) 563525
E-mail: info@minipack.it
<http://www.minipack.it>



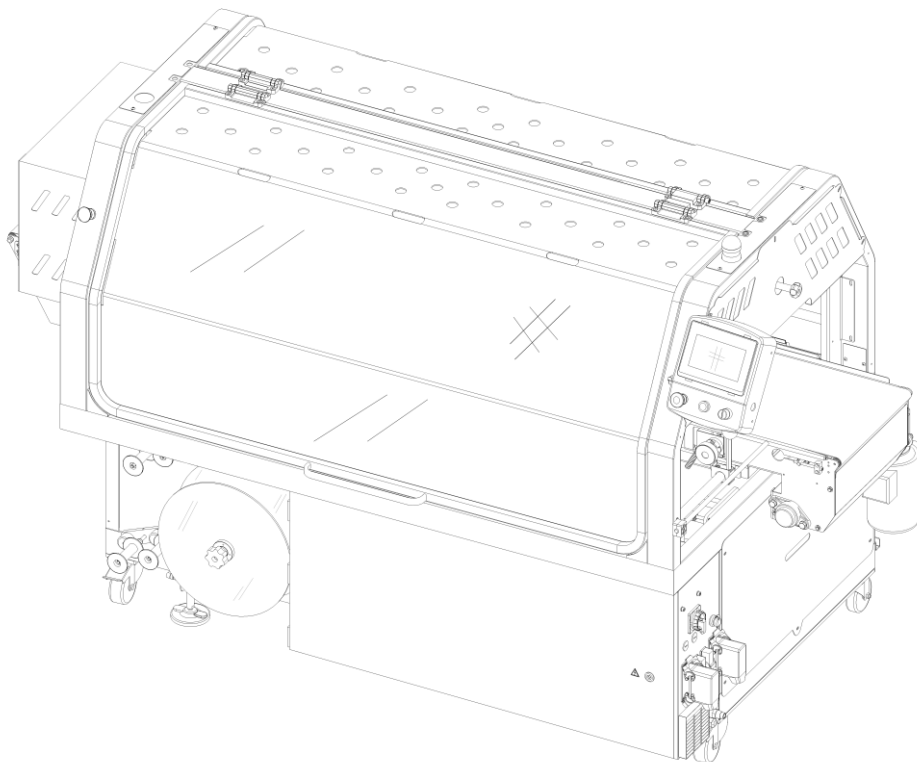
Pratika 56 MPE X2

(Machine code: **MF23BA94, MF23IA94, MF23BA94-1, MF23IA94-1**)

Note: "Analog" type connection between the automatic packaging machine and the belt (with connector).

Spare parts catalogue

(Valid from serial number 2009463 dated 03.2020)



CAREFULLY READ THIS CATALOGUE BEFORE ORDERING ANY SPARE PART



DOC. N. FM112318
REV. 0
Ed: 12.2022

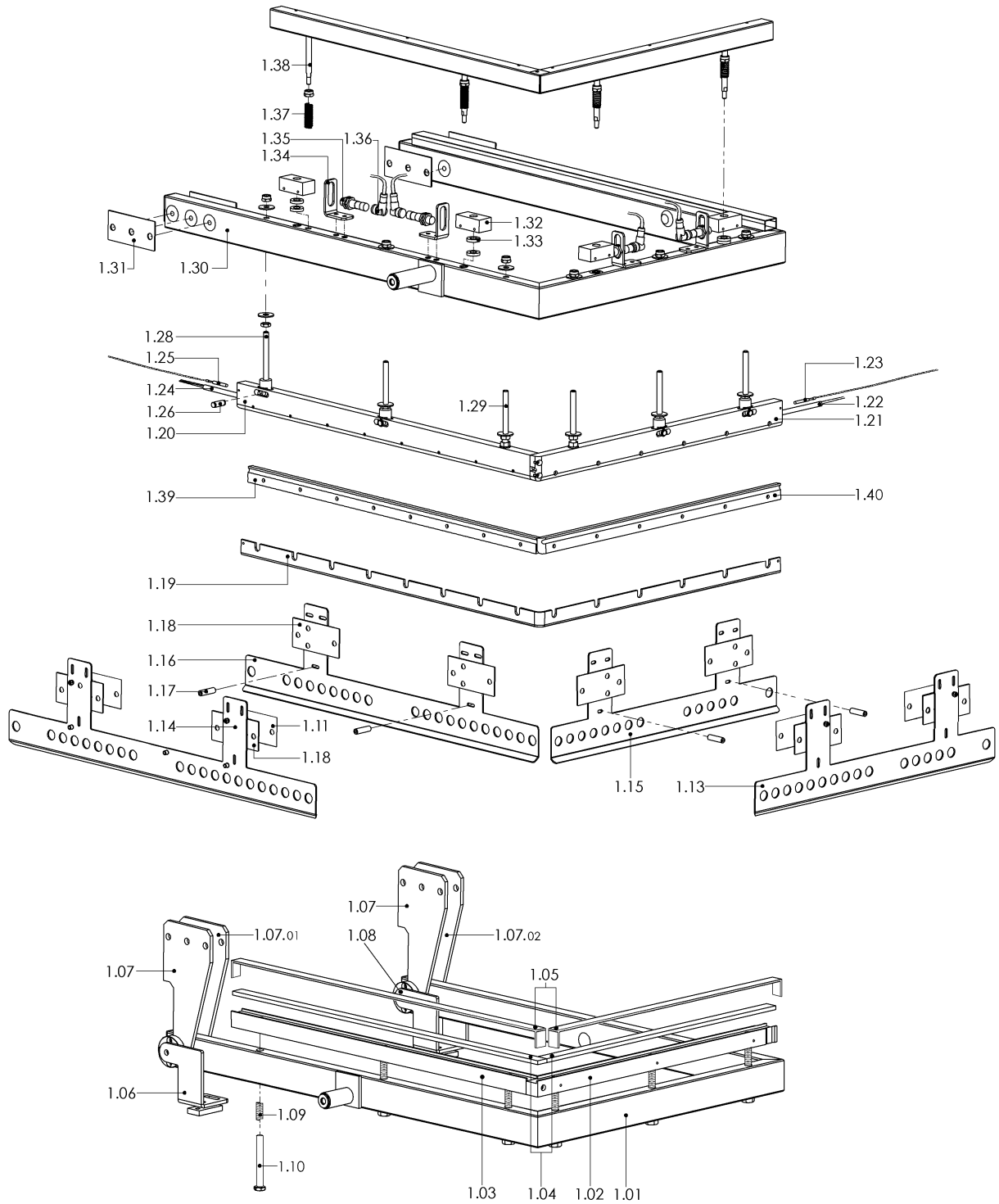
SEALING BARS GROUP

1.0

Pos.	Code	Description
1.01	FM300289 FM300382	Lower frame RAL9005B. Lower frame stainless steel
1.02	FM282069	Short contrast bar
1.03	FM282068	Long contrast bar
1.04	KR230002	Rubber 90 shore kit (long + short sealing bar)
1.05	KR210001	Teflon kit (long + short sealing bar)
1.06	FM282378	Right square
1.07	FM282366	Plate
1.07.01	FM282365	Plate
1.07.02	FM282367	Plate
1.08	FM282377	Left square
1.09	FM170129	Spring
1.10	FM850001 FM850051	Screw Screw stainless steel
1.11	FM282361	Thickness
1.13	FM230589	Outside fender
1.14	FM230591	Outside fender
1.15	FM230588	Inside fender
1.16	FM230590	Inside fender
1.17	FM160978	Spacer
1.18	FM283625	Plate
1.19	FE385618	Sealing blade
1.20	FM282064	Long sealing bar plate
1.21	FM282066	Short sealing bar plate
1.22	FE380073	Short sealing bar heater
1.23	FE435056	Termocouple "PT1000" Ø4x30 lg.1800mm
1.24	FE380072	Long sealing bar heater
1.25	FE435055	Termocouple "PT1000" Ø4x30 lg.3300mm
1.26	FM200152	Pin
1.28	FM851754	Tie rod
1.29	FM851755	Tie rod
1.30	FM300290 FM300377	Upper frame RAL9005B. Upper frame stainless steel
1.31	FM282050	Thickness
1.32	FM040436	Bracket
1.33	FM350043	Rubber washer
1.34	FM290498	Sensor square
1.35	FE220175	Inductive sensor
1.36	FE220171	Connector
1.37	FM170197	Spring
1.38	FM200318	Screw
1.39	FM282065	Long sealing bar stop
1.40	FM282067	Short sealing bar stop

SEALING BARS GROUP

1.0

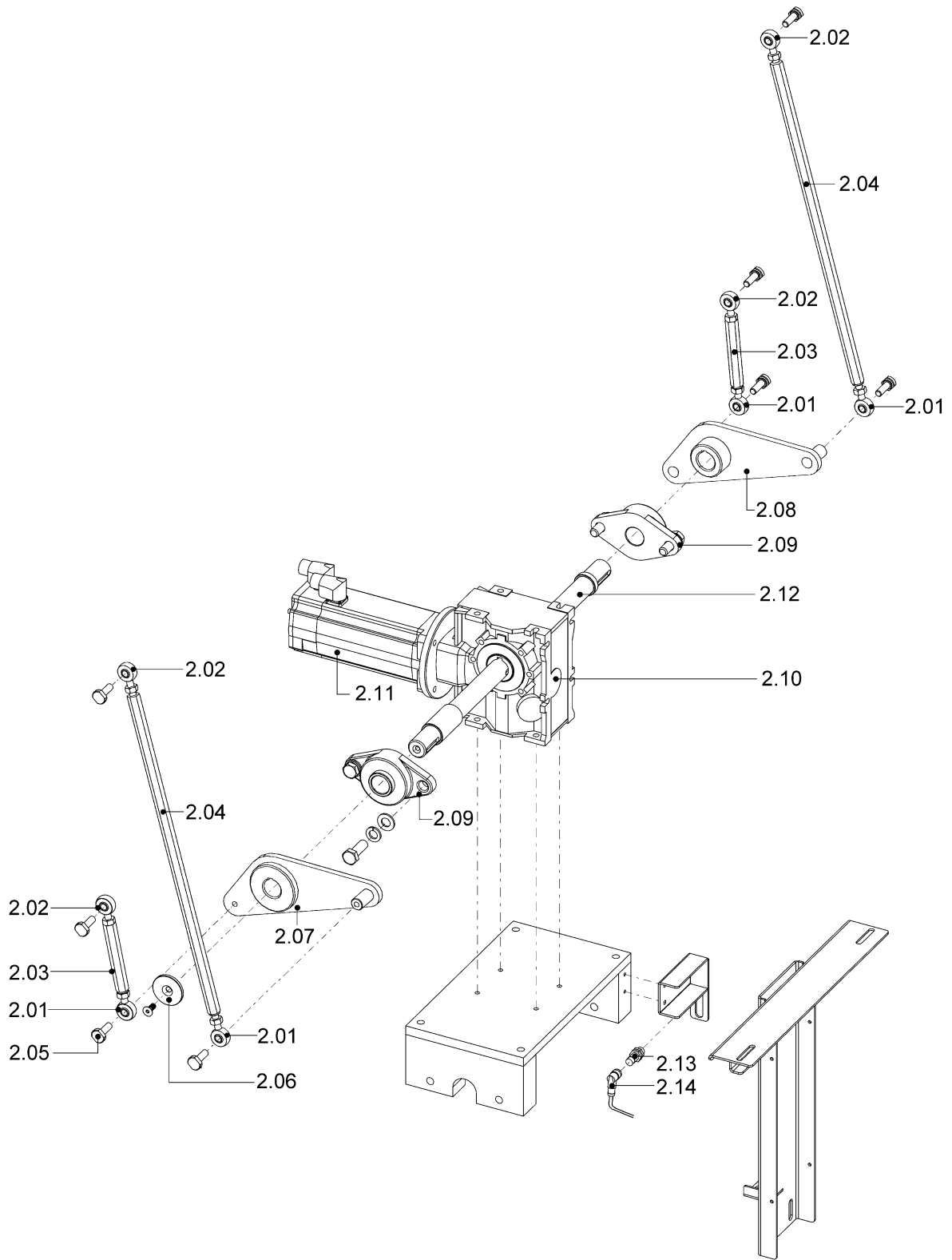


SEALING BAR LIFTING GROUP**2.0**

Pos.	Code	Description
2.01	FM640117	Rod end M10 left
2.02	FM640116	Rod end M10 right
2.03	FM160750 FM160919	Short bar Short bar stainless steel
2.04	FM160751 FM160920	Long bar Long bar stainless steel
2.05	FM160789	Pin
2.06	FM160455	Flared spacer
2.07	FM060093 FM060108	Right lever Right lever stainless steel
2.08	FM060094 FM060109	Left lever Left lever stainless steel
2.09	FM610723	Flange support
2.10	FM760037	Reduction gear
2.11	FE240018	Brushless motor
2.12	FM010188	Shaft
2.13	FE220175	Inductive sensor
2.14	FE220171	Connector

SEALING BAR LIFTING GROUP

2.0



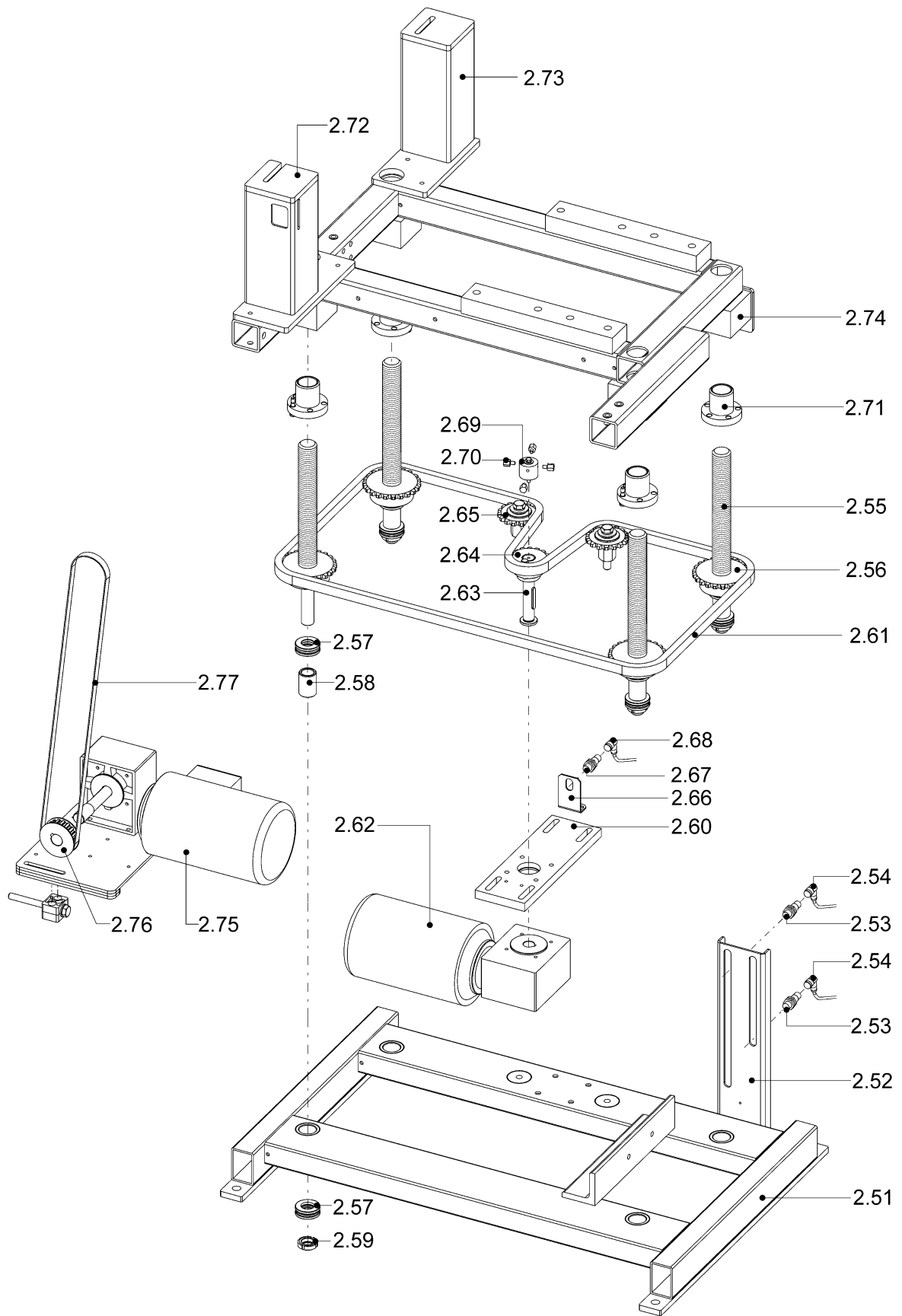
SEALING BAR LIFTING GROUP

2.1

Pos.	Code	Description
2.51	FM300199 FM300376	Lower frame RAL9005B. Lower frame stainless steel
2.52	FM290179 FM291156	Sensors support RAL9005B. Sensors support stainless steel
2.53	FE220175	Inductive sensor
2.54	FE220171	Connector
2.55	FM200215 FM200461	Adjustment bar Adjustment bar stainless steel
2.56	FM260362 FM260406	Pignon Pignon stainless steel
2.57	FM610201	Bearing
2.58	FM540040	Bush
2.59	FM860803 FM860905	Ring nut Ring nut stainless steel
2.60	FM283767 FM283774	Plate Plate stainless steel
2.61	KR230032	Chain kit
2.62	FE250057	Gearmotor
2.63	FM010213 FM010303	Shaft Shaft stainless steel
2.64	FM260094 FM260405	Pignon Pignon stainless steel
2.65	FM260048	Pignon
2.66	FM282139	Square
2.67	FE220175	Inductive sensor
2.68	FE220171	Connector
2.69	FM160301	Washer for readout group
2.70	FM160300	Pin for sensor readout
2.71	FM620001	Nut
2.72	FM300446 FM300488	Front and rear support RAL9005B. Front and rear support stainless steel
2.73	FM300306 FM300379	Rear support RAL9005B. Rear support stainless steel
2.74	FM300198 FM300375	Upper frame RAL9005B. Upper frame stainless steel
2.75	FE250097	Gearmotor
2.76	FM260063	Pulley
2.77	FM530007	Toothed belt

SEALING BAR LIFTING GROUP

2.1



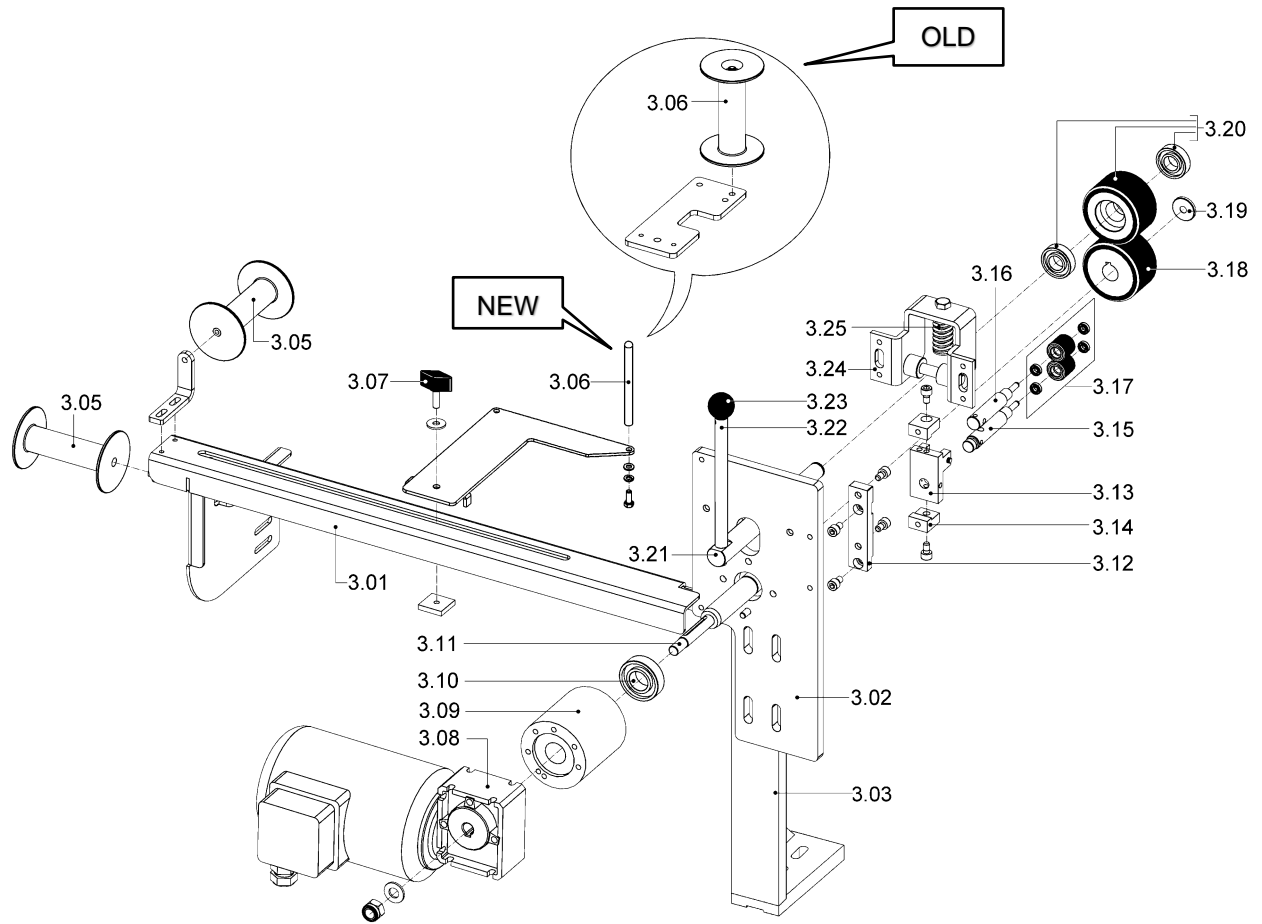
ENTRAINMENT FILM GROUP

3.0

Pos.	Code	Description
3.01	FM291476	Rollers crosspiece
3.02	FM283769	Plate
3.03	FM282140 FM283722	Square RAL9005B. Square stainless steel
3.05	FM250073	Rullo rinvio / Transmission roller
3.06	FM200309 FM250073	Transmission pin (from s.n. xx.xxxx) Transmission roller (up to s.n. xx.xxxx)
3.07	FM510058	Wing knob M6x20
3.08	FE250095	Gearmotor
3.09	FM120059	Flange
3.10	FM610070	Radial bearing
3.11	FM010211	Motor shaft
3.12	FM283010	Plate
3.13	FM290362	Support
3.14	FM283009	Plate
3.15	FM200219	Lower pin
3.16	FM200216	Upper pin
3.17	KR230021	Rollers kit
3.18	FM160713	Wheel
3.19	FM160336 FM160904	Spacer Spacer stainless steel
3.20	KR230022	Wheel kit
3.21	FM010212	Idle shaft
3.22	FM060005 FM060032	Lever Lever stainless steel
3.23	FM510034	Spheric handle
3.24	FM291158	Support
3.25	FM170157	Spring

ENTRAINMENT FILM GROUP

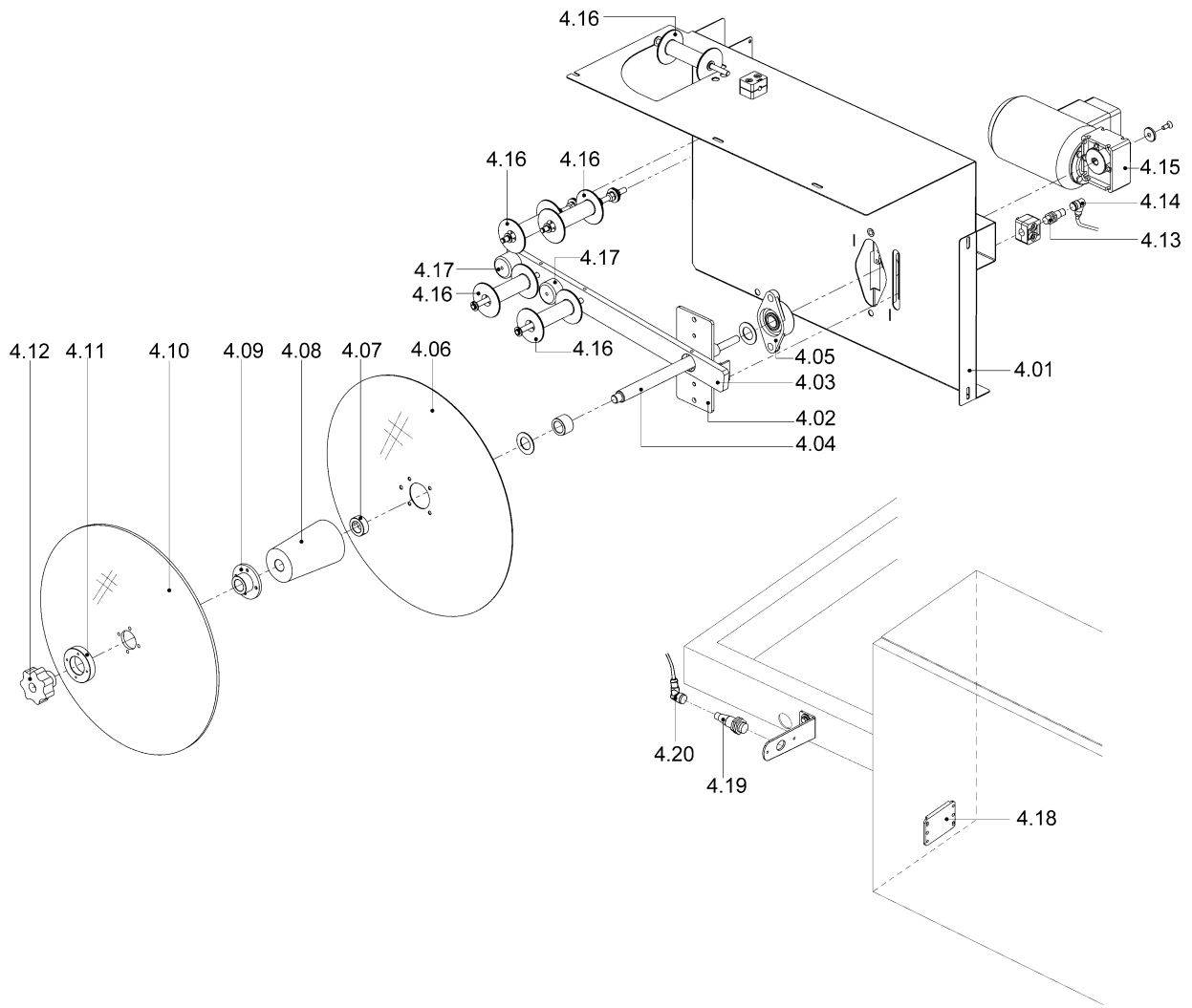
3.0



FILM SCRAP STATIONARY AND REWINDER GROUP

4.0

Pos.	Code	Description
4.01	FM091026 FM091702	Rewinder case RAL7035B. Rewinder case stainless steel
4.02	FM291439 FM291606	Plate Plate stainless steel
4.03	FM060167	Lever
4.04	FM200488 FM200510	Rewinder pin Rewinder pin stainless steel
4.05	FM610717	Flange support
4.06	FM120028	Rear flange
4.07	FM160963	Ring
4.08	FM250112	Hub
4.09	FM120060	Flange
4.10	FM120061	Front flange
4.11	FM040096	Bracket
4.12	FM510115	Handwheel
4.13	FE220175	Inductive sensor
4.14	FE220171	Connector
4.15	FE250093	Gearmotor
4.16	FM250073	Transmission roller
4.17	FM160360 FM160862	Bracket Bracket stainless steel
4.18	FE220164	Reflector
4.19	FE220183	Photocell
4.20	FE220171	Connector

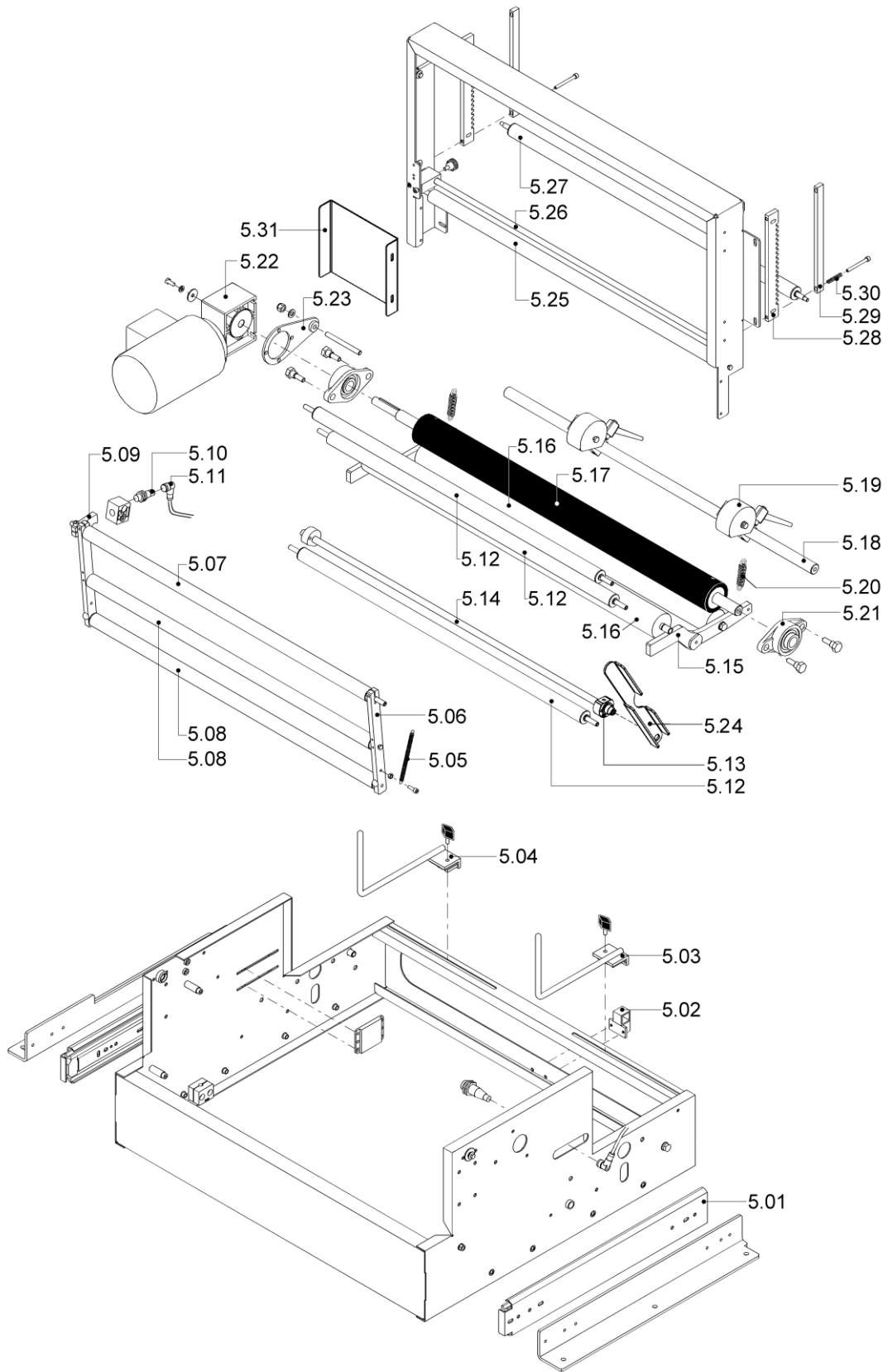


ROLL SUPPORT AND UNWINDER FILM GROUP
5.0

Pos.	Code	Description
5.01	FM140253	Guide couple
5.02	FM510119	Ratchet
5.03	FM140206	Guide
5.04	FM140208	Guide
5.05	FM170198	Spring
5.06	FM283545	Plate
5.07	KR230121	Rocker fulcrum roller kit
5.08	KR230101	Rocker fixed roller kit
5.09	FM283546	Plate
5.10	FE220175	Inductive sensor
5.11	FE220171	Connector
5.12	P0K00439	Roller pre-assembly
5.13	FM070033	Cam
5.14	FM010340	Shaft
5.15	FM283770 FM283771	Lever Lever stainless steel
5.16	FM710386	Idle roller
5.17	FM250328 FM250577	Rubber-coated roller (from s.n. xx.xxxx) Rubber-coated roller (up to s.n. xx.xxxx)
5.18	FM010201 FM010302	Shaft Shaft stainless steel
5.19	P0K00670 P0K00673	Microperforator with 32 needles pre-assembly Microperforator with 32 needles pre-assembly st.steel
5.20	FM170166	Spring
5.21	FM610717	Flange support
5.22	FE250094	Gearmotor
5.23	FE250061	Torque arm
5.24	FM060177	Lever
5.25	P0K00439	Deviafilm fixed roller pre-assembly
5.26	FM030109	Opening film rod
5.27	P0K00595 P0K01359	Roller pre-assembly Roller pre-assembly stainless steel
5.28	FM283552 FM283726	Plate Plate stainless steel
5.29	FM283551 FM283725	Plate Plate stainless steel
5.30	FM170187	Spring
5.31	FM091583 FM091705	Case RAL7035B. Case stainless steel

ROLL SUPPORT AND UNWINDER FILM GROUP

5.0



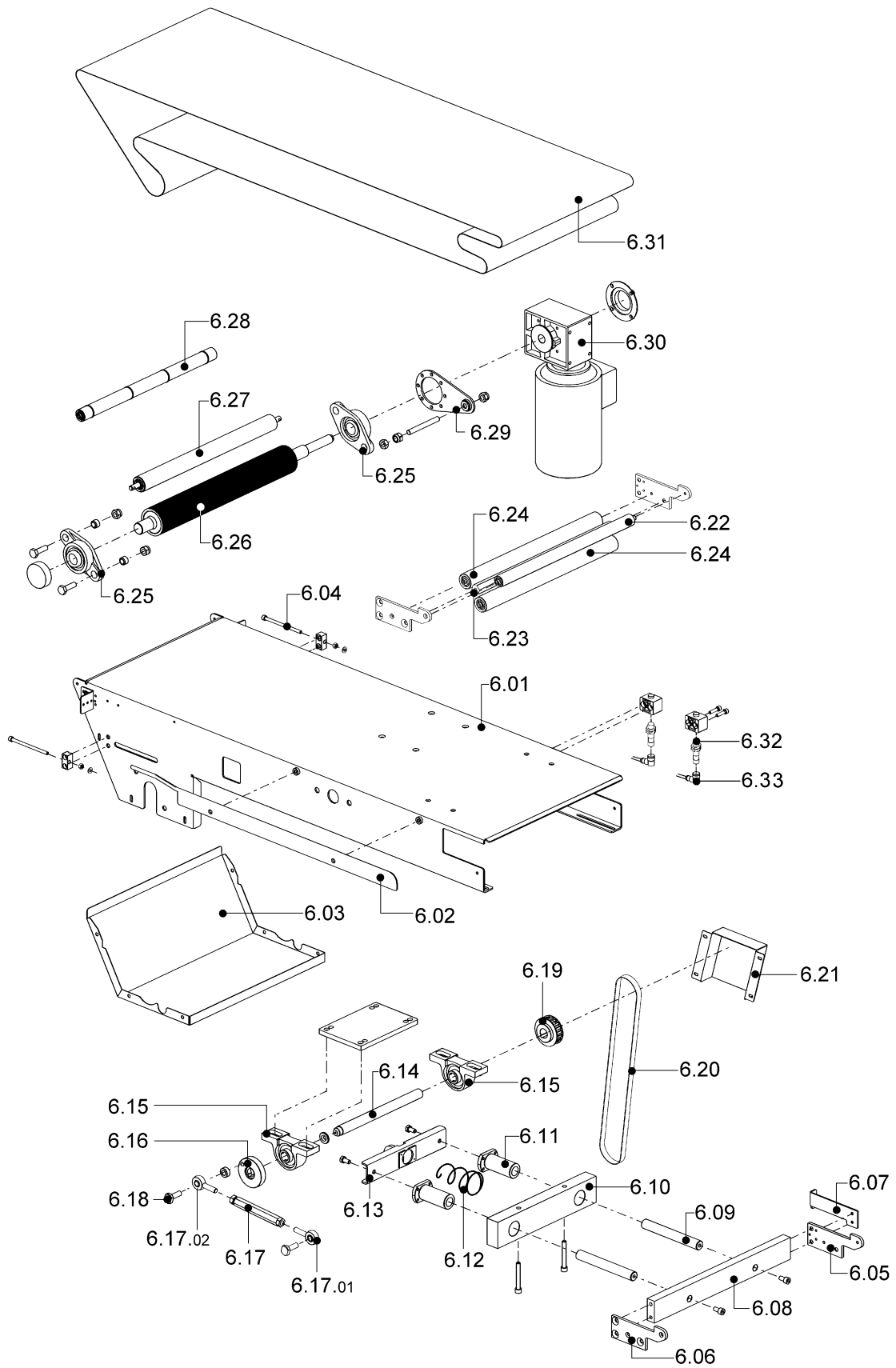
OUTFEED BELT GROUP

6.0

Pos.	Code	Description
6.01	FM096539 FM096769	Bed RAL7035B. Bed stainless steel
6.02	FM282370	Long side
6.03	FM091288 FM091708	Case RAL7035B. Case stainless steel
6.04	FM851227 FM851380	Screw Screw stainless steel
6.05	FM291455	Left support
6.06	FM291454	Right support
6.07	FM291523 FM291615	Sensor readout plate RAL7035B. Sensor readout plate stainless steel
6.08	FM283765	Pusher plate
6.09	FM030261	Bar
6.10	FM291522	Rods support
6.11	FM540215	Bush
6.12	FM170170	Spring
6.13	FM291521 FM291614	Pusher assembly RAL7035B. Pusher assembly stainless steel
6.14	FM010112 FM010117	Shaft Shaft stainless steel
6.15	FM610726	Straight support
6.16	FM060176 FM060189	Handle Handle stainless steel
6.17	FM160999	Bar
6.17.01	FM640116	Rod end M10 right
6.17.02	FM640117	Rod end M10 left
6.18	FM160789	Pin
6.19	FM260063	Pulley
6.20	FM530007	Toothed belt
6.21	FM091601 FM091707	Case RAL7035B. Case stainless steel
6.22	FM250248 FM250659	Roller Roller stainless steel
6.23	FM160474	Spacer
6.24	FM250252 FM250288	Roller Roller stainless steel
6.25	FM610715	Flange support
6.26	FM250250	Rubber-coated roller
6.27	P0K01220 P0K01307	Roller pre-assembly Roller pre-assembly stainless steel
6.28	P0K01245 P0K01306	Roller pre-assembly Roller pre-assembly stainless steel
6.29	FE250054	Reaction arm
6.30	FE250053	Gearmotor
6.31	FM710163	Belt
6.32	FE220175	Inductive sensor
6.33	FE220171	Connector

OUTFEED BELT GROUP

6.0

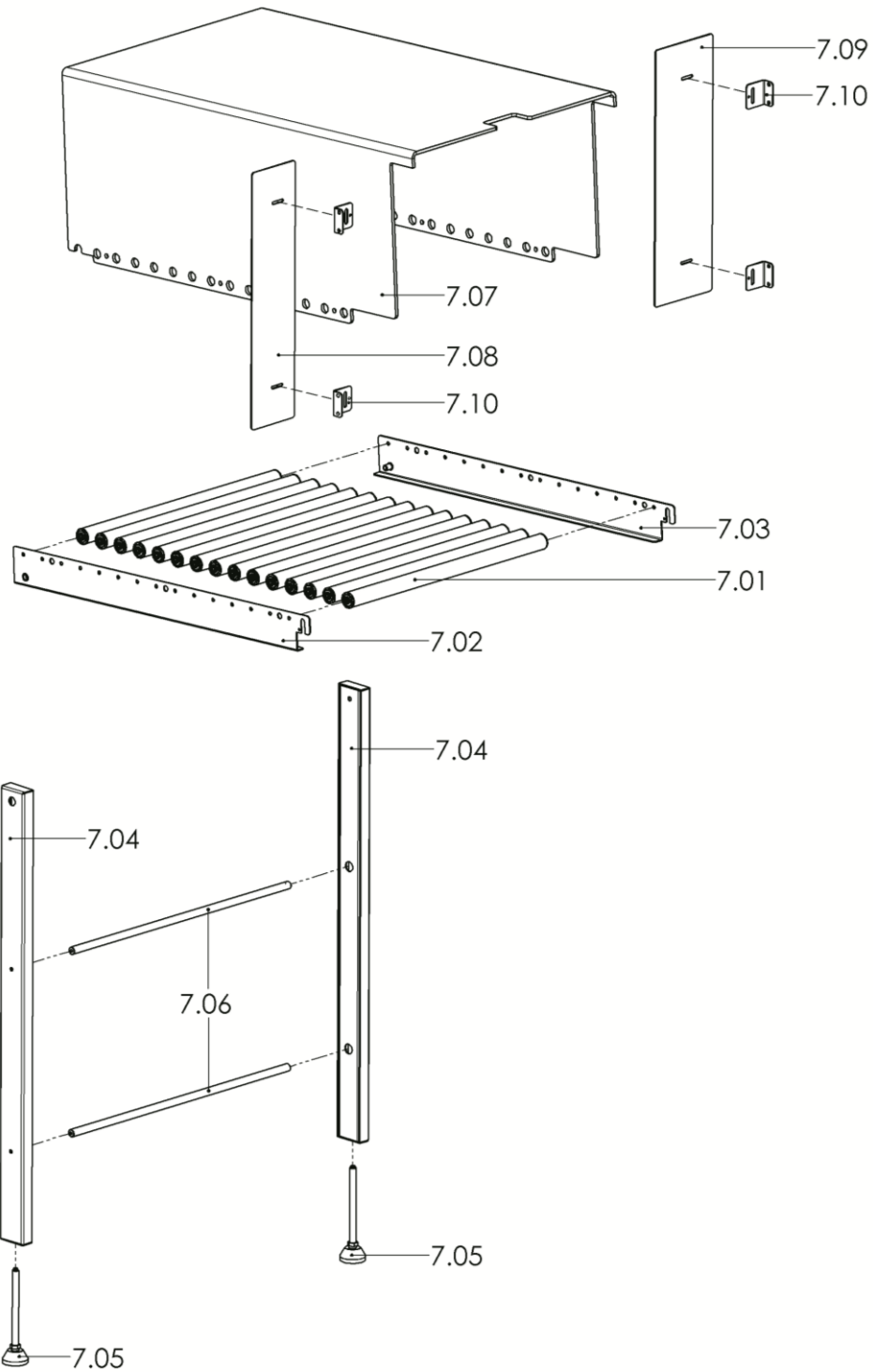


ROLLER PLATE GROUP (optional)**7.0****RU21B001: Roller plate (0,7m)**

Pos.	Code	Description
7.01	P0K00489	Roller pre-assembly
7.02	FM095977	Right side
7.03	FM095978	Left side
7.04	FM095979	Support
7.05	FM510068	Foot
7.06	FM160434	Spacer
7.07	FM230516	Roller protection
7.08	FM096006	Front closure sheet steel
7.09	FM096007	Rear closure sheet steel
7.10	FM290609	Square

ROLLER PLATE GROUP (optional)

7.0



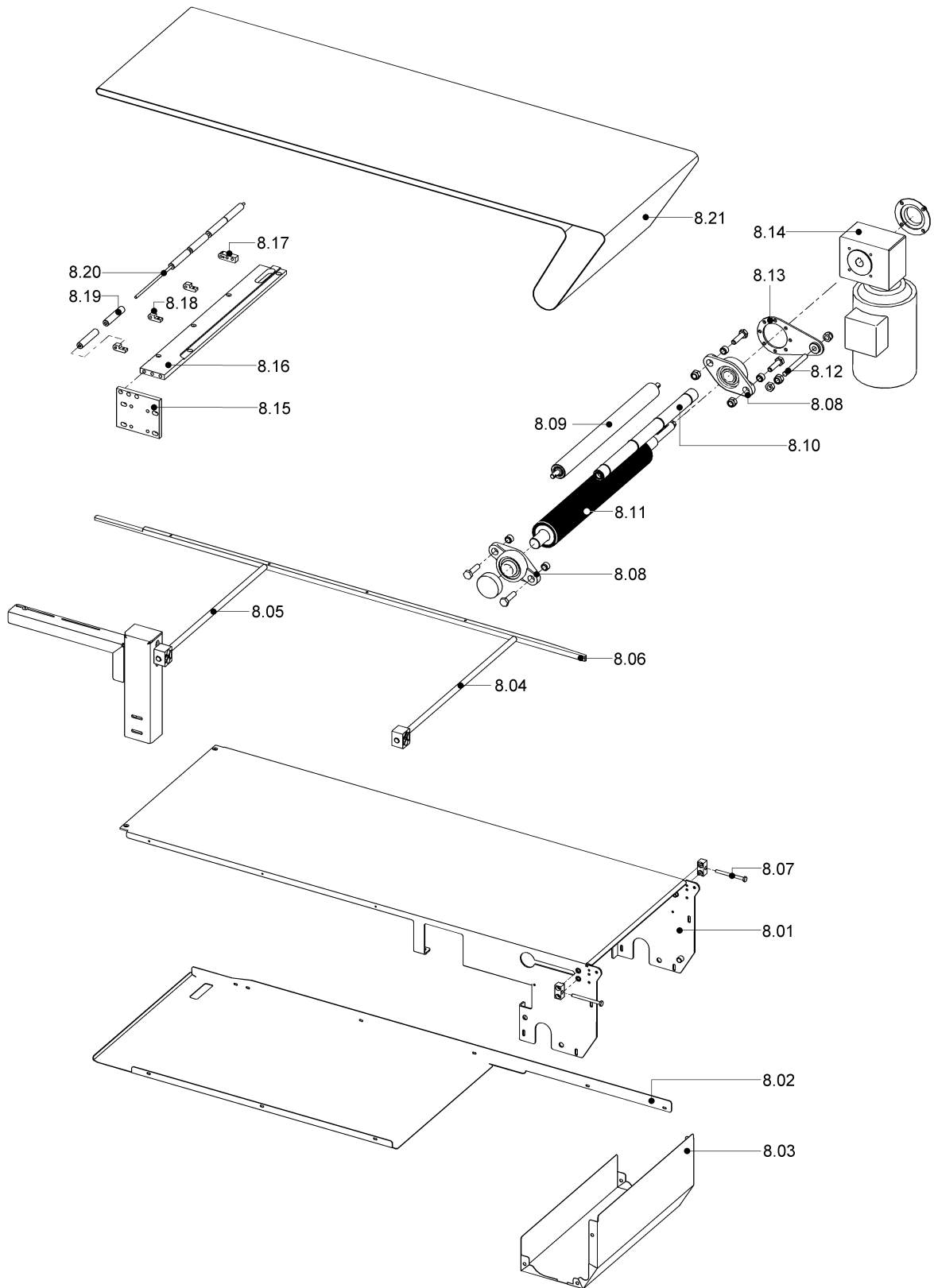
INFEED BELT GROUP

8.0

Pos.	Code	Description
8.01	FM096538 FM096768	Bed RAL7035B. Bed stainless steel
8.02	FM096003	Case
8.03	FM091287 FM091706	Case RAL7035B. Case stainless steel
8.04	FM030079	Rod
8.05	FM030081	Rod
8.06	FM291442	Product guide
8.07	FM851379	Screw
8.08	FM610715	Flange support
8.09	P0K01220 P0K01307	Roller pre-assembly Roller pre-assembly stainless steel
8.10	P0K01245 P0K01306	Roller pre-assembly Roller pre-assembly stainless steel
8.11	FM250250	Rubber-coated roller
8.12	FM851847 FM851836	Screw Screw stainless steel
8.13	FE250054	Torque arm
8.14	FE250053	Gearmotor
8.15	FM283581 FM283716	Plate Plate stainless steel
8.16	FM291456	Support
8.17	FM290606	Support
8.18	FM040417	Bracket
8.19	FM250176	Roller
8.20	FM030274	Rod
8.21	FM710163	Belt

INFEED BELT GROUP

8.0



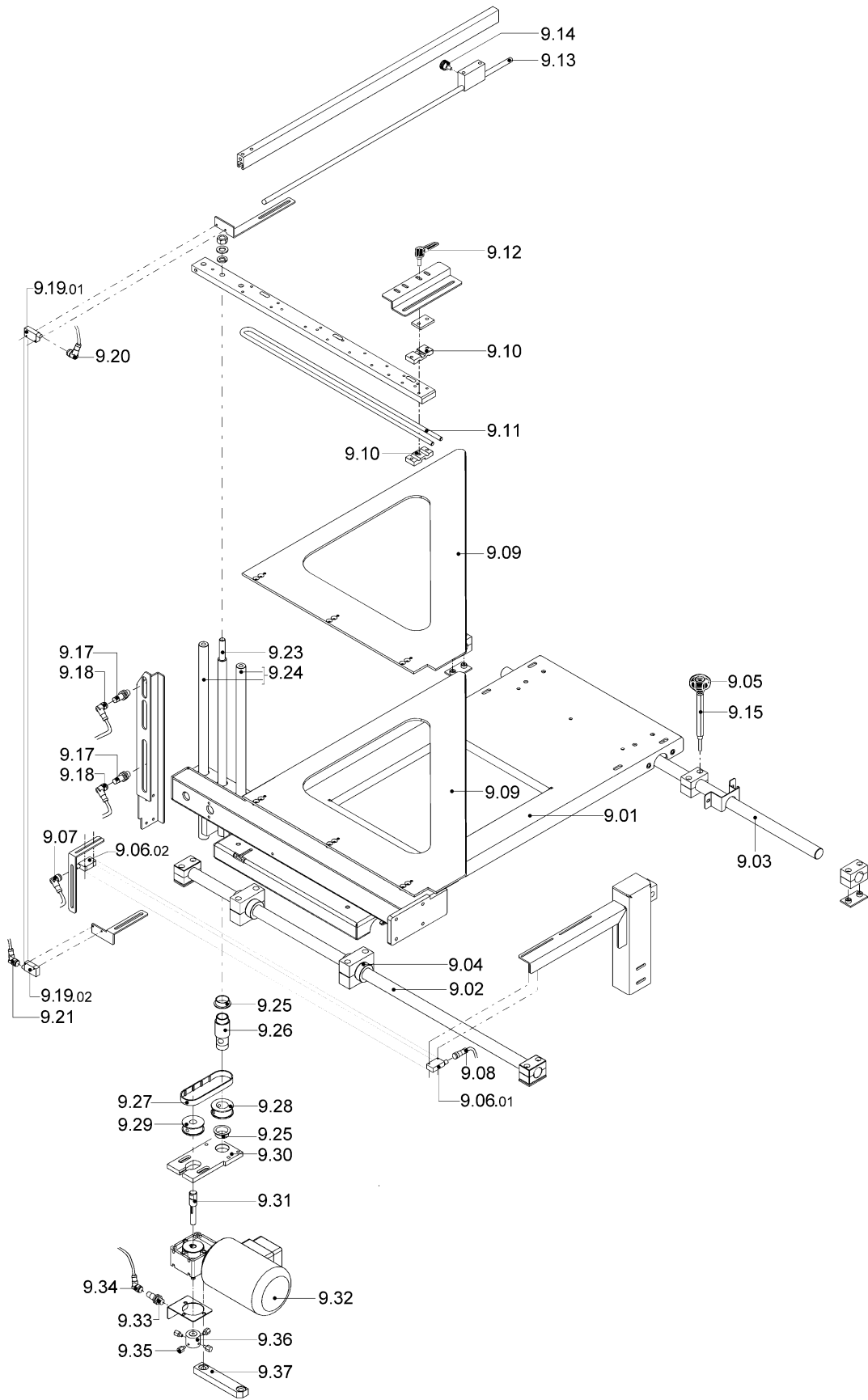
FILM OPENER GROUP

9.0

Pos.	Code	Description
9.01	FM096535 FM096767	Sheet steel RAL7035B Sheet steel stainless steel
9.02	FM030271 FM030285	Sliding rod Sliding rod stainless steel
9.03	FM030275 FM030286	Sliding rod Sliding rod stainless steel
9.04	FM540116	Bearing manifold
9.05	FM510052	Handwheel
9.06	FE220249	Photocell kit (transmitter +receiver)
...9.06.01	-	Transmitter
...9.06.02	-	Receiver
9.07	FE220173	Connector
9.08	FE220176	Connector
9.09	FM282146	Opening film triangle
9.10	FM040095	Rod bracket
9.11	FM030029	Rod
9.12	FM510203	Handle
9.13	FM030284	Rod
9.14	FM510035	Handwheel
9.15	FM200498 FM200514	Pin Pin stainless steel
9.17	FE220175	Inductive sensor
9.18	FE220171	Connector
9.19	FE220249	Photocell kit (transmitter +receiver)
...9.19.01	-	Transmitter
...9.19.02	-	Receiver
9.20	FE220173	Connector
9.21	FE220173	Connector
9.23	FM030093	Threaded rod
9.24	KR210077	Rods kit
9.25	FM540030	Bush
9.26	FM340144	Threaded bush
9.27	FM530002	Toothed belt
9.28	FM260081 FM260091	Driven pulley Driven pulley stainless steel
9.29	FM260082 FM260092	Motorized pulley Motorized pulley stainless steel
9.30	FM283558 FM283733	Gearmotor plate Gearmotor plate stainless steel
9.31	FM010162 FM010298	Gearmotor shaft Gearmotor shaft stainless steel
9.32	FE250056	Gearmotor
9.33	FE220175	Inductive sensor
9.34	FE220171	Connector
9.35	FM160300	Pin for Proximity readout
9.36	FM160301	Washer for sensor readout
9.37	FM290589 FM291172	Rod support Rod support stainless steel

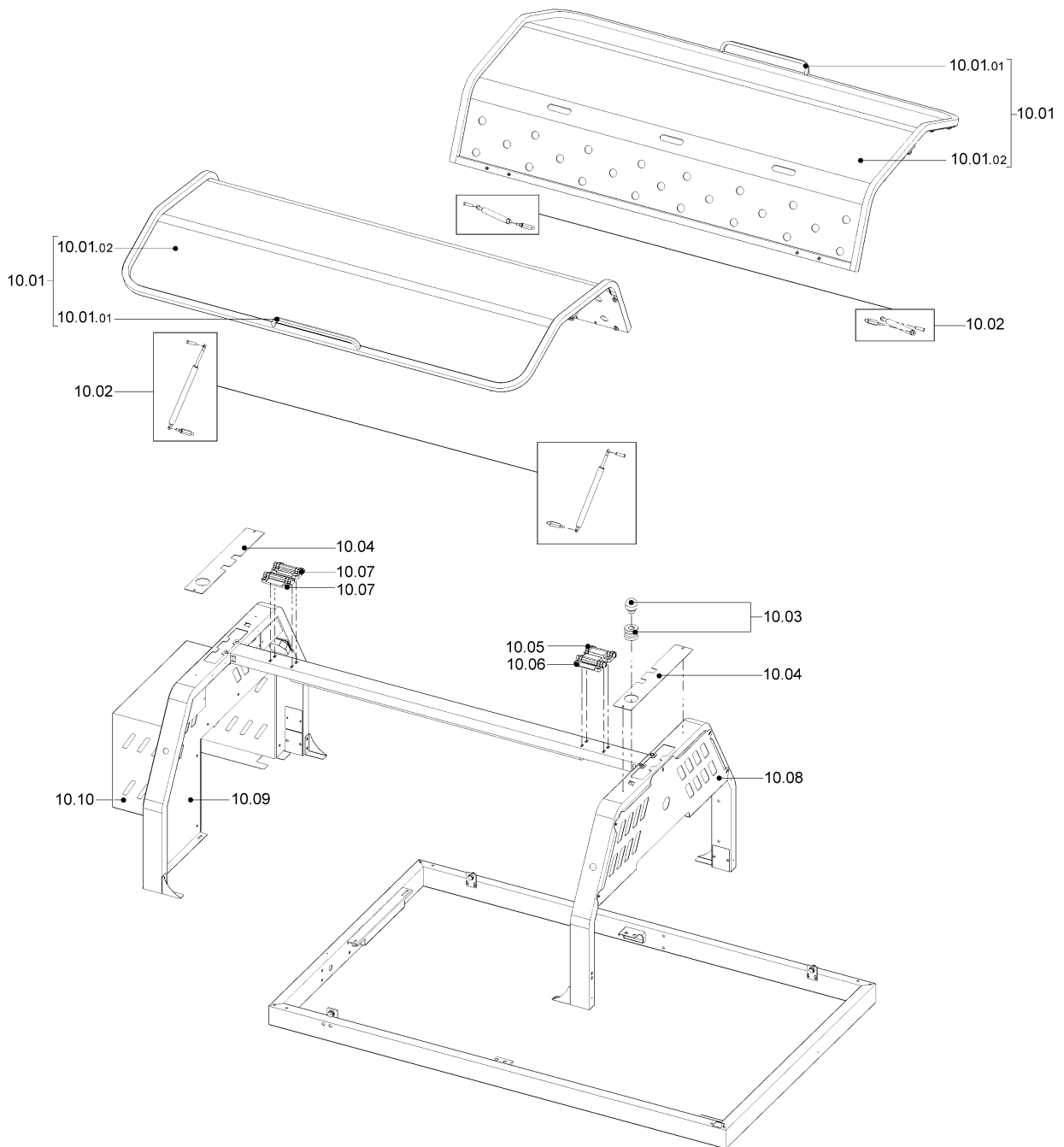
FILM OPENER GROUP

9.0



COVERAGE GROUP	10.0
-----------------------	-------------

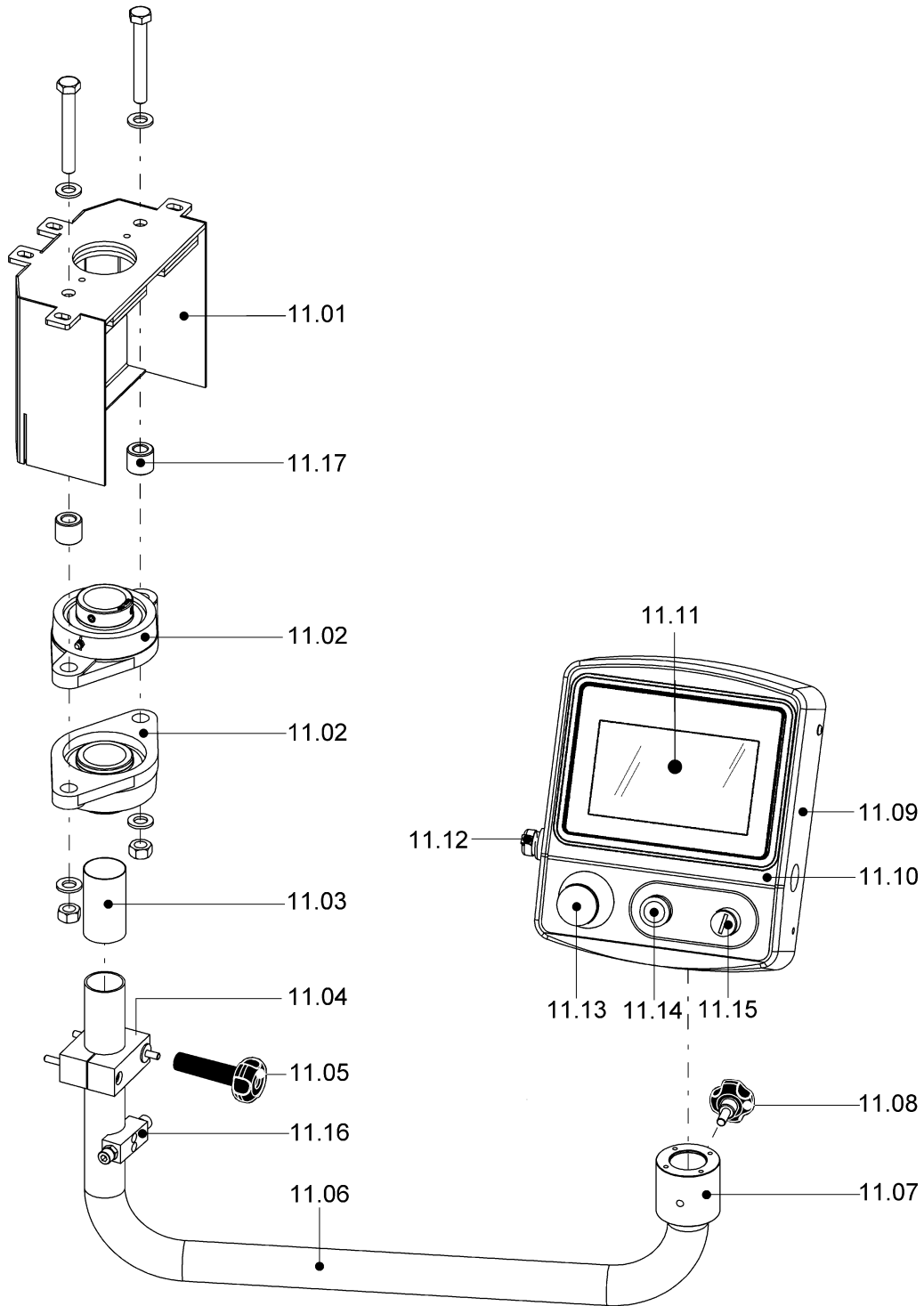
Pos.	Code	Description
10.01	P0K01195 P0K01356	Door pre-assembly Door pre-assembly stainless steel
10.01.01	FM510172	Handle
10.01.02	FM230606	Door fender
10.02	KR230122	2 gas springs kit
10.03	KR210121	Traffic light kit
10.04	FM096547 FM096763	Coverage RAL9005B. Coverage stainless steel
10.05	FE220257	Safety hinge
10.06	FE220258	Safety hinge
10.07	FM510183	Complementary hinge
10.08	FM096674 FM096764	Infeed case RAL7035B. Infeed case stainless steel
10.09	FM096675 FM096765	Outfeed case RAL7035B. Outfeed case stainless steel
10.10	FM096532 FM096766	Coverage RAL7035B. Coverage stainless steel



CONTROL PANEL GROUP

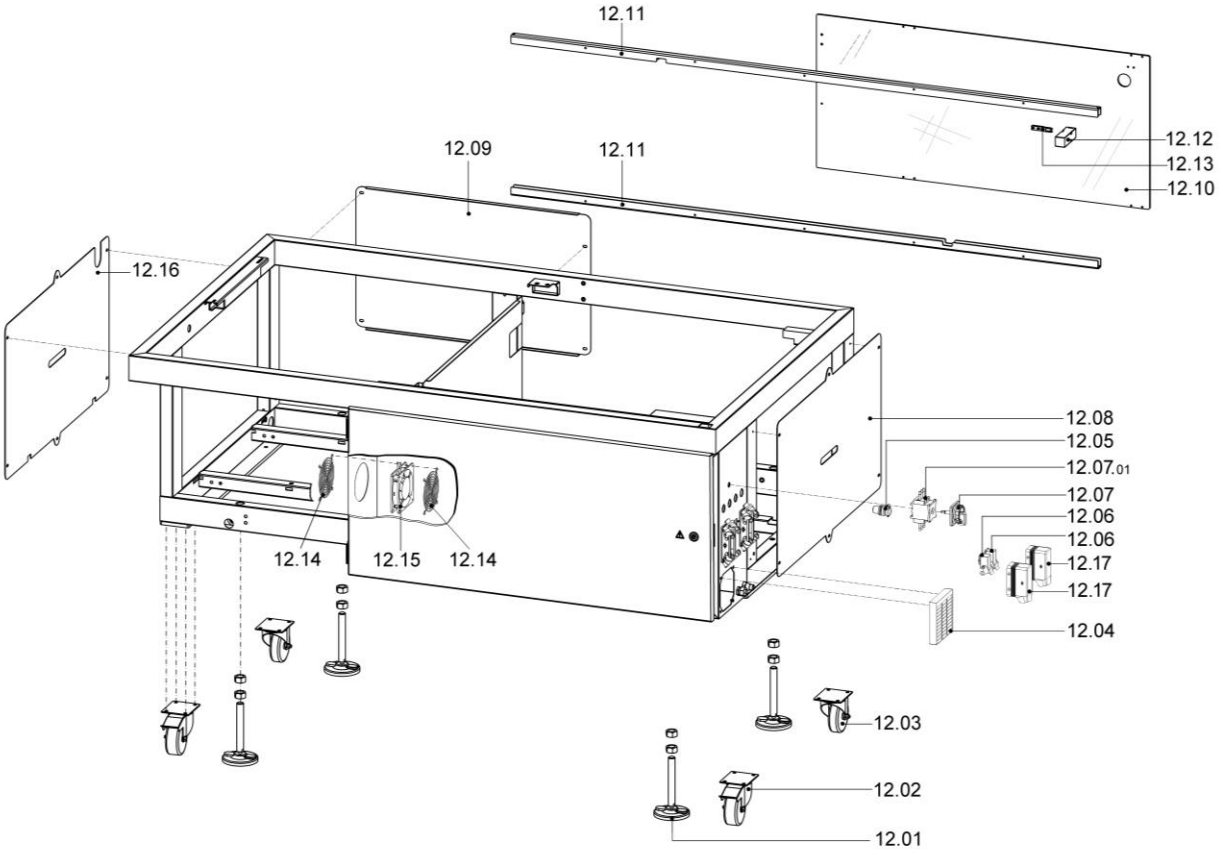
11.0

Pos.	Code	Description
11.01	FM291465 FM291607	Support RAL9005B. Support stainless steel
11.02	FM610734	Flange support
11.03	FM160475	Spacer
11.04	FM510170	Blocking collar
11.05	FM510163	Handwheel
11.06	FM300444 FM300494	Swivel arm Swivel arm stainless steel
11.07	FM120016	Flange
11.08	FM510052	Handwheel
11.09	FM081068 FM081068-1	MF23BA94, MF23IA94 Control panel coverage MF23BA94-1, MF23IA94-1 Control panel coverage
11.10	FM110704 FM110704-1	MF23BA94, MF23IA94 Adhesive MF23BA94-1, MF23IA94-1 Adhesive
11.11	KR230128 KR230091	MF23BA94, MF23IA94 Touch screen MF23BA94-1, MF23IA94-1 PLC-CNC-HMI Smart 7" Touchscreen
11.12	FE320712	USB port with cable
11.13	FE340005	Emergency push-button
11.14	FE340004	Reset push-button
11.15	FE085006	"Bypass safety protections" selector
11.16	FM040277	Bracket
11.17	FM160488	Spacer

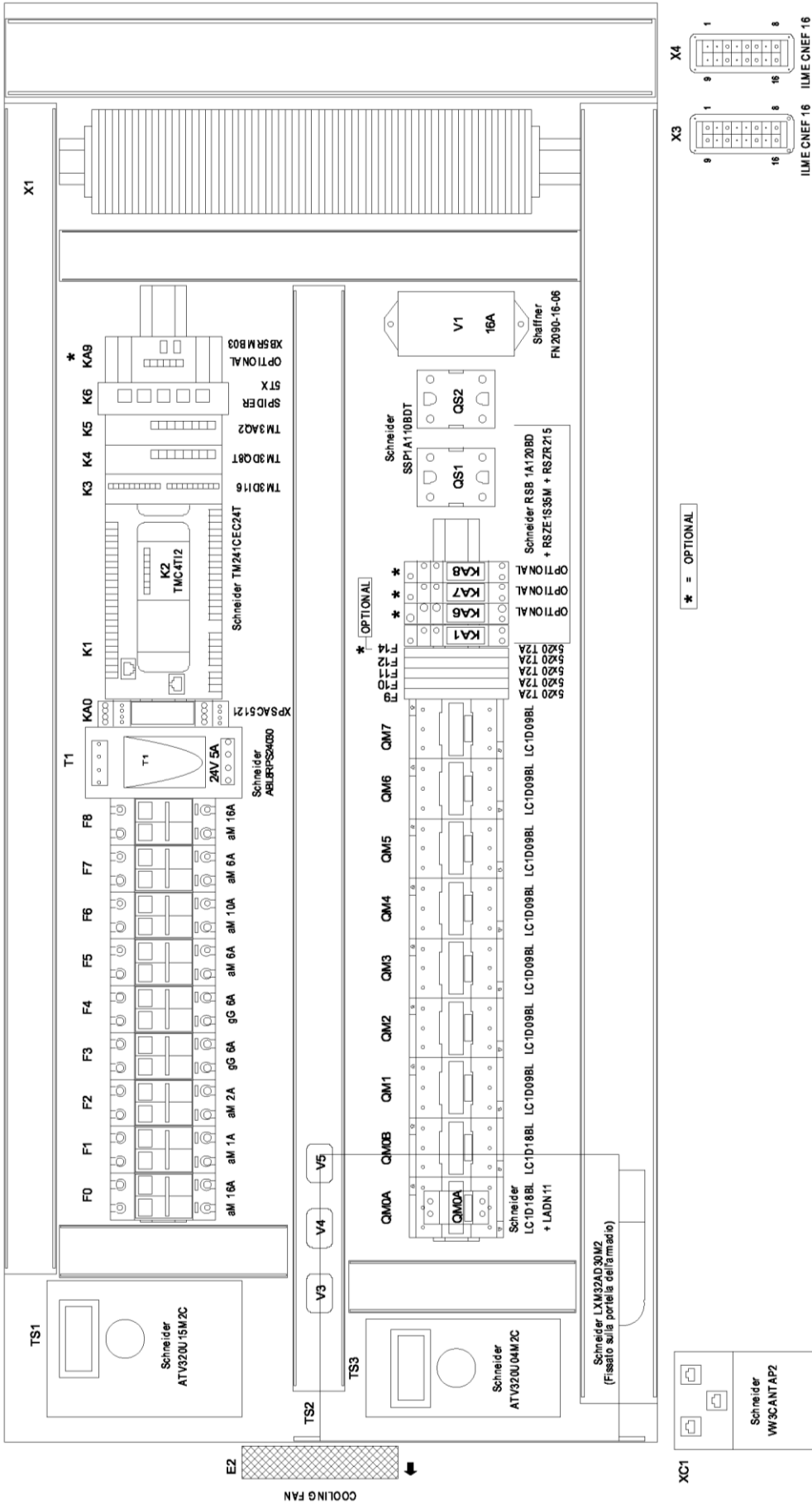


BODYWORK GROUP**12.0**

Pos.	Code	Description
12.01	FM510017	Foot
12.02	FM770551	Wheel with brake
12.03	FM770550	Wheel
12.04	FM720010	Filter
12.05	FE320713	RJ45 socket
12.06	FE340054	Socket
12.07	FE080006	Load break switch handle
12.07.01	FE080030	Switch
12.08	FM096667 FM096760	Side case RAL7035B. Side case stainless steel
12.09	FM096668 FM096758	Rear case RAL7035B. Rear case stainless steel
12.10	FM230604	Door
12.11	FM291546	Door guide
12.12	FE220118	Safety switch
12.13	FE220123	Drive
12.14	FM095160	Fender
12.15	FE260038	Fan
12.16	FM096696 FM096759	Side case RAL7035B. Side case stainless steel
12.17	P0K00599	Closing connector



Pos.	Code	Description
E2	FE260038	Fan
F0	FE290407	Fuse 10.3X38 AM 16A
F1	FE290400	Fuse 10.3X38 AM 1A
F2	FE290401	Fuse 10.3X38 AM 2A
F3	FE290454	Fuse 10.3X38 gG 6A
F4	FE290454	Fuse 10.3X38 gG 6A
F5	FE290403	Fuse 10.3X38 AM 6A
F6	FE290405	Fuse 10.3X38 AM 10A
F7	FE290403	Fuse 10.3X38 AM 6A
F8	FE290407	Fuse 10.3X38 AM 16A
F9	FE290121	Fuse 5X20 T-2A
F10	FE290121	Fuse 5X20 T-2A
F11	FE290121	Fuse 5X20 T-2A
F12	FE290121	Fuse 5X20 T-2A
F14	FE290121	Fuse 5X20 T-2A
KA0	FE370100	Safety module
KA1	FE370020	Relay 12A 24VDC
K1	KR230077	Base unit PLC M241
K2	FE122025	Cartridge expansion
K3	FE122121	16 inputs expansion
K4	FE122128	8 outputs expansion
K5	FE122137	2 outputs expansion
K6	FE122058	5 doors switch ethernet
QM0A	FE110308 + FE110650	Contactactor LC1-D18BL Contact block LADN11
QM0B	FE110308	Contactactor LC1-D18BL
QM1	FE110307	Contactactor LC1-D09BL
QM2	FE110307	Contactactor LC1-D09BL
QM3	FE110307	Contactactor LC1-D09BL
QM4	FE110307	Contactactor LC1-D09BL
QM5	FE110307	Contactactor LC1-D09BL
QM6	FE110307	Contactactor LC1-D09BL
QM7	FE110307	Contactactor LC1-D09BL
QS1	FE370040	Relay 10A
QS2	FE370040	Relay 10A
T1	FE122139	100-240V-24V 5A 120W Infeed
TS1	KR230079	Inverter ATV 320C 1,5kW 240V 1Ph
TS2	KR230082	Brushless drive
TS3	KR230083	Inverter ATV 320C 0,37kW 240V 1Ph
V1	FE330010	Network filter 1Ph 16A
V3	FE330100	Ferrite core
V4	FE330100	Ferrite core
V5	FE330100	Ferrite core



Pos.	Code	Description
E2	FE260038	Fan
F0	FE290407	Fuse 10.3X38 AM 16A
F1	FE290401	Fuse 10.3X38 AM 2A
F2	FE290401	Fuse 10.3X38 AM 2A
F3	FE290454	Fuse 10.3X38 gG 6A
F4	FE290454	Fuse 10.3X38 gG 6A
F5	FE290403	Fuse 10.3X38 AM 6A
F6	FE290405	Fuse 10.3X38 AM 10A
F7	FE290403	Fuse 10.3X38 AM 6A
F8	FE290407	Fuse 10.3X38 AM 16A
F9	FE290121	Fuse 5X20 T-2A
F10	FE290121	Fuse 5X20 T-2A
F11	FE290121	Fuse 5X20 T-2A
F12	FE290121	Fuse 5X20 T-2A
KA0	FE370100	Safety module
KA1	FE370020	Relay 12A 24VDC
KA2	FE370020	Relay 12A 24VDC
K1	FE122171	16 IN + 16 OUT CAN-OPEN module
K2	FE122171	16 IN + 16 OUT CAN-OPEN module
K3	FE122172	MODBUS analog 4 inputs module
QM0A	FE110308 + FE110650	Contacteur LC1-D18BL Contact block LADN11
QM0B	FE110308	Contacteur LC1-D18BL
QM1	FE110307	Contacteur LC1-D09BL
QM2	FE110307	Contacteur LC1-D09BL
QM3	FE110307	Contacteur LC1-D09BL
QM4	FE110307	Contacteur LC1-D09BL
QM5	FE110307	Contacteur LC1-D09BL
QM6	FE110307	Contacteur LC1-D09BL
QM7	FE110307	Contacteur LC1-D09BL
QS1	FE370040	Relay 10A
QS2	FE370040	Relay 10A
T1	FE122139	100-240V-24V 5A 120W Infeed
TS1	KR230079	Inverter ATV 320C 1,5kW 240V 1Ph
TS2	FE121064	Brushless drive
TS3	KR230083	Inverter ATV 320C 0,37kW 240V 1Ph
V1	FE330010	Network filter 1Ph 16A
V3	FE330100	Ferrite core
V4	FE330100	Ferrite core
V5	FE330100	Ferrite core

