



Minipack-torre S.p.A.
Via Provinciale, 54 - 24044 Dalmine (BG) - Italy
Tel. (035) 563525 – Fax (035) 564945
E-mail: info@minipack-torre.it
<http://www.minipack-torre.it>



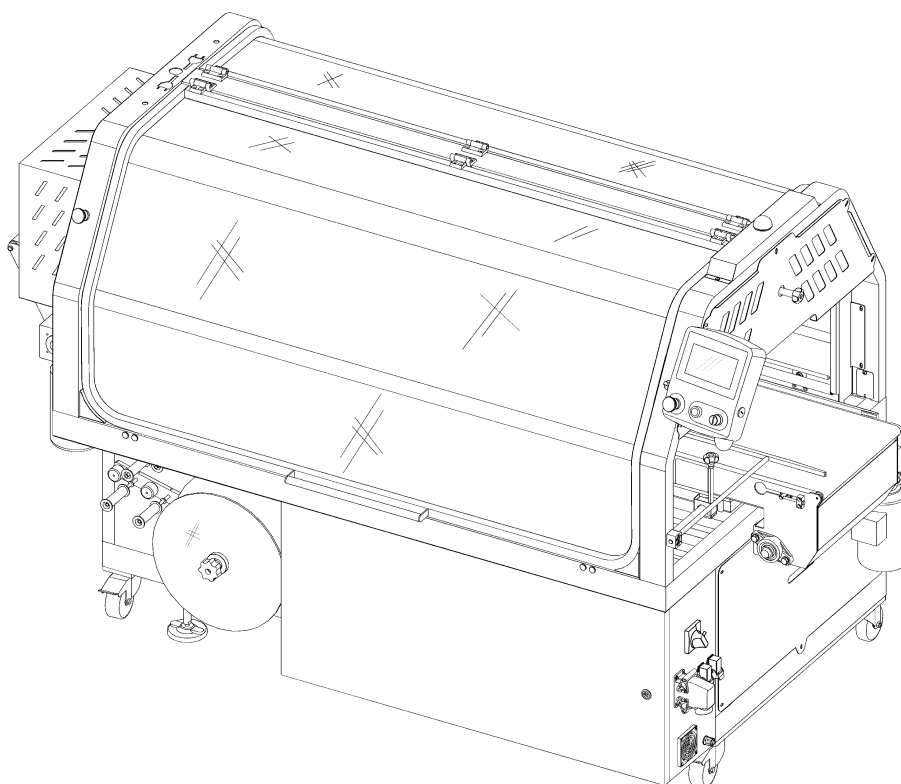
Pratika 56 MPE X2

(Machine code: **MF23BA91**)

Note: "CANopen" type connection between the automatic packaging machine and the belt (with connector).

Spare parts catalogue

(Valid from serial number 1907527 dated 10.2019 up to 2009433 dated 02.2020)



CAREFULLY READ THIS CATALOGUE BEFORE ORDERING ANY SPARE PART



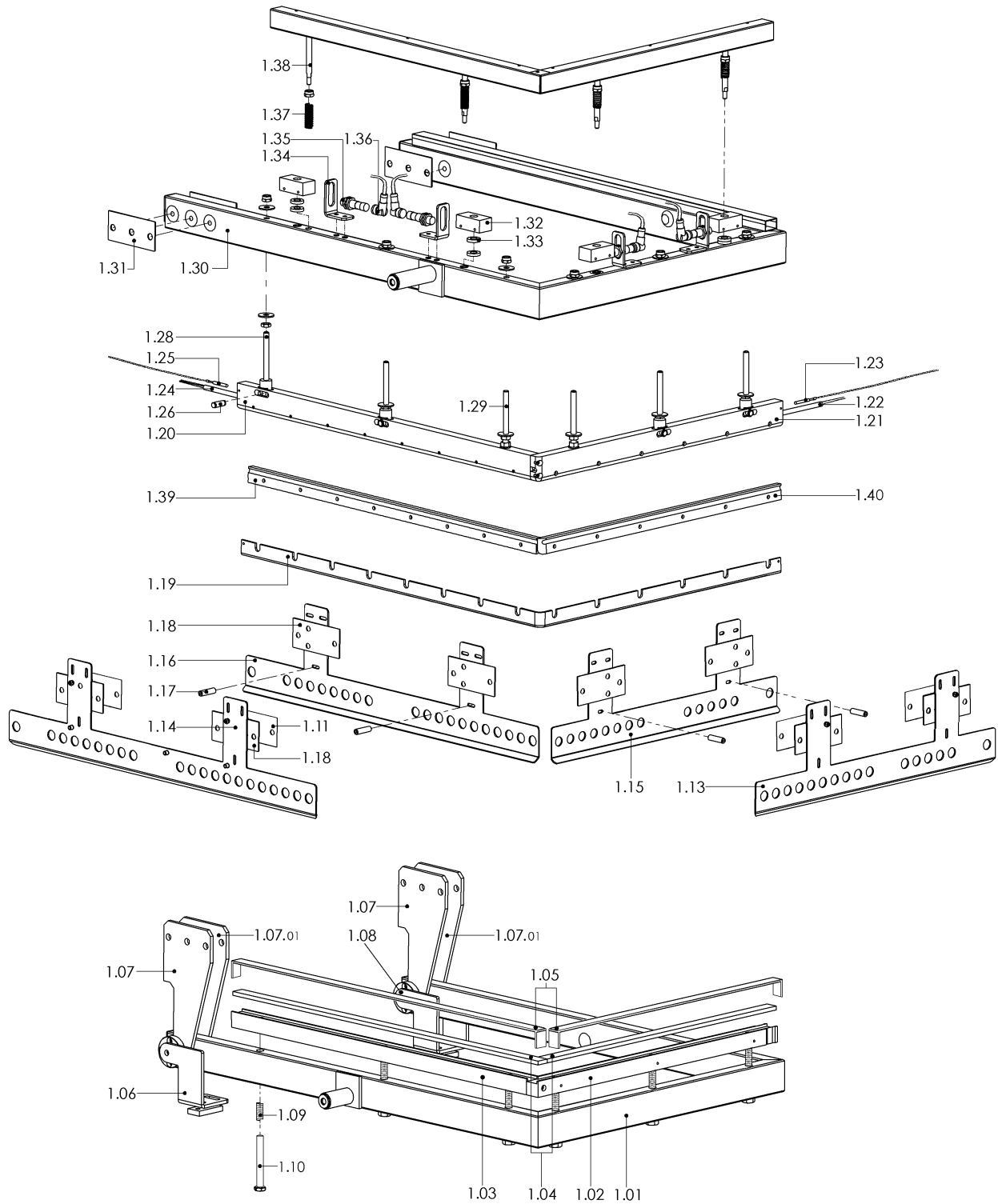
DOC. N. FM112306
REV. 0
Ed: 07.2020

SEALING BARS GROUP**1.0**

Pos.	Code	Description
1.01	FM300289	Lower frame
1.02	FM282069	Short contrast bar
1.03	FM282068	Long contrast bar
1.04	KR230002	Rubber 90 shore kit (long + short sealing bar)
1.05	KR210001	Teflon kit (long + short sealing bar)
1.06	FM282369	Right square
1.07	FM282366	Plate
1.07.01	FM282365	Plate
1.08	FM282368	Left square
1.09	FM170129	Spring
1.10	FM850001	Screw
1.11	FM282361	Thickness
1.13	FM230589	Outside fender
1.14	FM230591	Outside fender
1.15	FM230588	Inside fender
1.16	FM230590	Inside fender
1.17	FM160978	Spacer
1.18	FM283625	Plate
1.19	FE385618	Sealing blade
1.20	FM282064	Long sealing bar plate
1.21	FM282066	Short sealing bar plate
1.22	FE380073	Short sealing bar heater
1.23	FE435056	Termocouple "PT1000" Ø4x30 lg.1800mm
1.24	FE380072	Long sealing bar heater
1.25	FE435055	Termocouple "PT1000" Ø4x30 lg.3300mm
1.26	FM200152	Pin
1.28	FM851754	Tie rod
1.29	FM851755	Tie rod
1.30	FM300290	Upper frame
1.31	FM282050	Thickness
1.32	FM040436	Bracket
1.33	FM350043	Rubber washer
1.34	FM290498	Sensor square
1.35	FE220175	Inductive sensor
1.36	FE220170	Connector
1.37	FM170197	Spring
1.38	FM200318	Screw
1.39	FM282065	Long sealing bar stop
1.40	FM282067	Short sealing bar stop

SEALING BARS GROUP

1.0

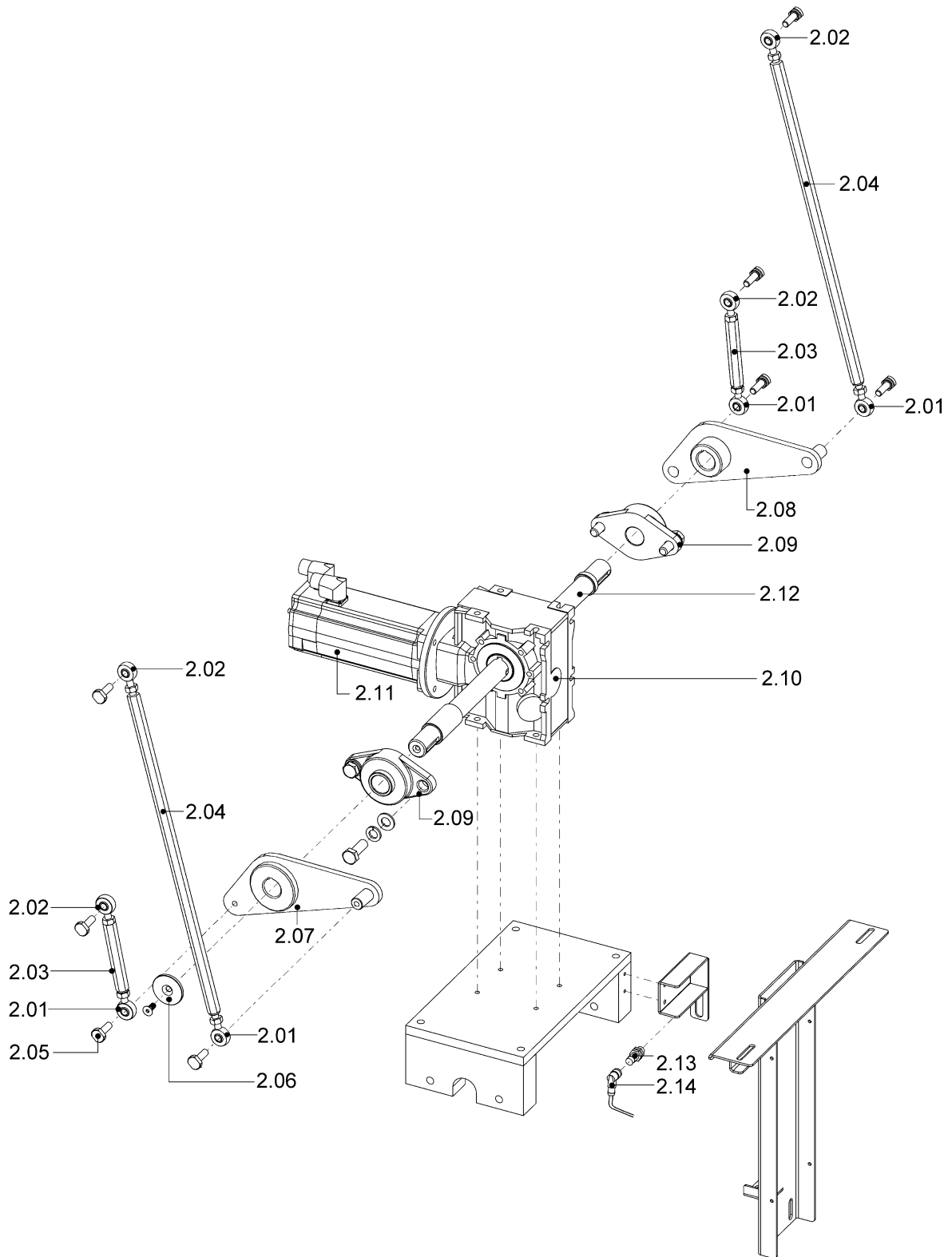


SEALING BAR LIFTING GROUP**2.0**

Pos.	Code	Description
2.01	FM640117	Rod end M10 left
2.02	FM640116	Rod end M10 right
2.03	FM160750	Short bar
2.04	FM160751	Long bar
2.05	FM160789	Pin
2.06	FM160455	Flared spacer
2.07	FM060093	Right lever
2.08	FM060094	Left lever
2.09	FM610723	Flange support
2.10	FM760027	Reduction gear
2.11	FE240014	Brushless motor
2.12	FM010188	Shaft
2.13	FE220175	Inductive sensor
2.14	FE220171	Connector

SEALING BAR LIFTING GROUP

2.0

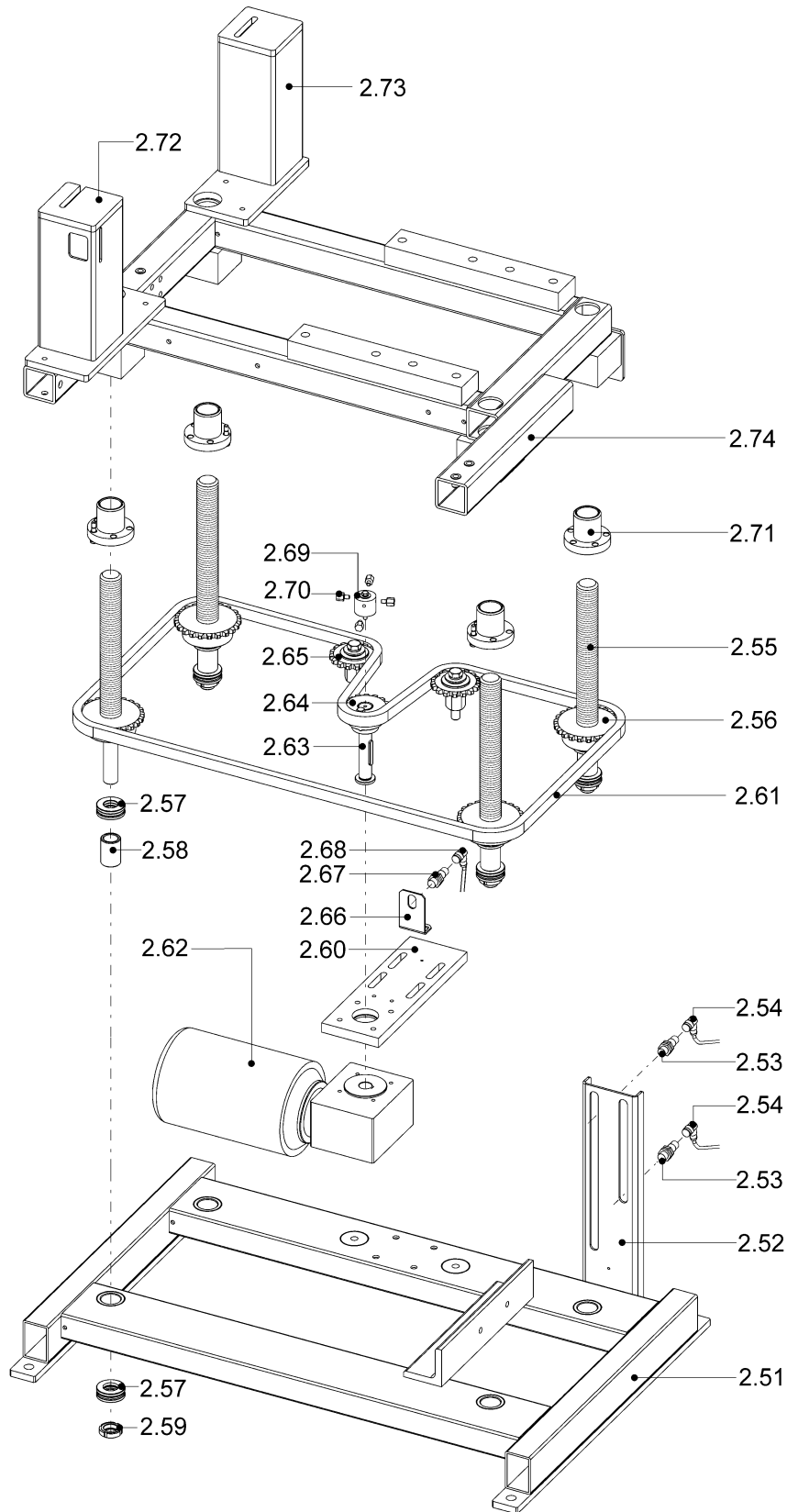


SEALING BAR LIFTING GROUP**2.1**

Pos.	Code	Description
2.51	FM300199	Lower frame
2.52	FM290179	Sensors support
2.53	FE220175	Inductive sensor
2.54	FE220171	Connector
2.55	FM200215	Adjustment bar
2.56	FM260362	Pignon
2.57	FM610201	Bearing
2.58	FM540040	Bush
2.59	FM860803	Ring nut
2.60	FM283584	Plate
2.61	KR230032	Chain kit
2.62	FE250057	Gearmotor
2.63	FM010213	Shaft
2.64	FM260094	Pignon
2.65	FM260048	Pignon
2.66	FM282139	Square
2.67	FE220175	Inductive sensor
2.68	FE220171	Connector
2.69	FM160301	Washer for readout group
2.70	FM160300	Pin for sensor readout
2.71	FM620001	Nut
2.72	FM300446	Front and rear support
2.73	FM300306	Rear support
2.74	FM300198	Upper frame

SEALING BAR LIFTING GROUP

2.1

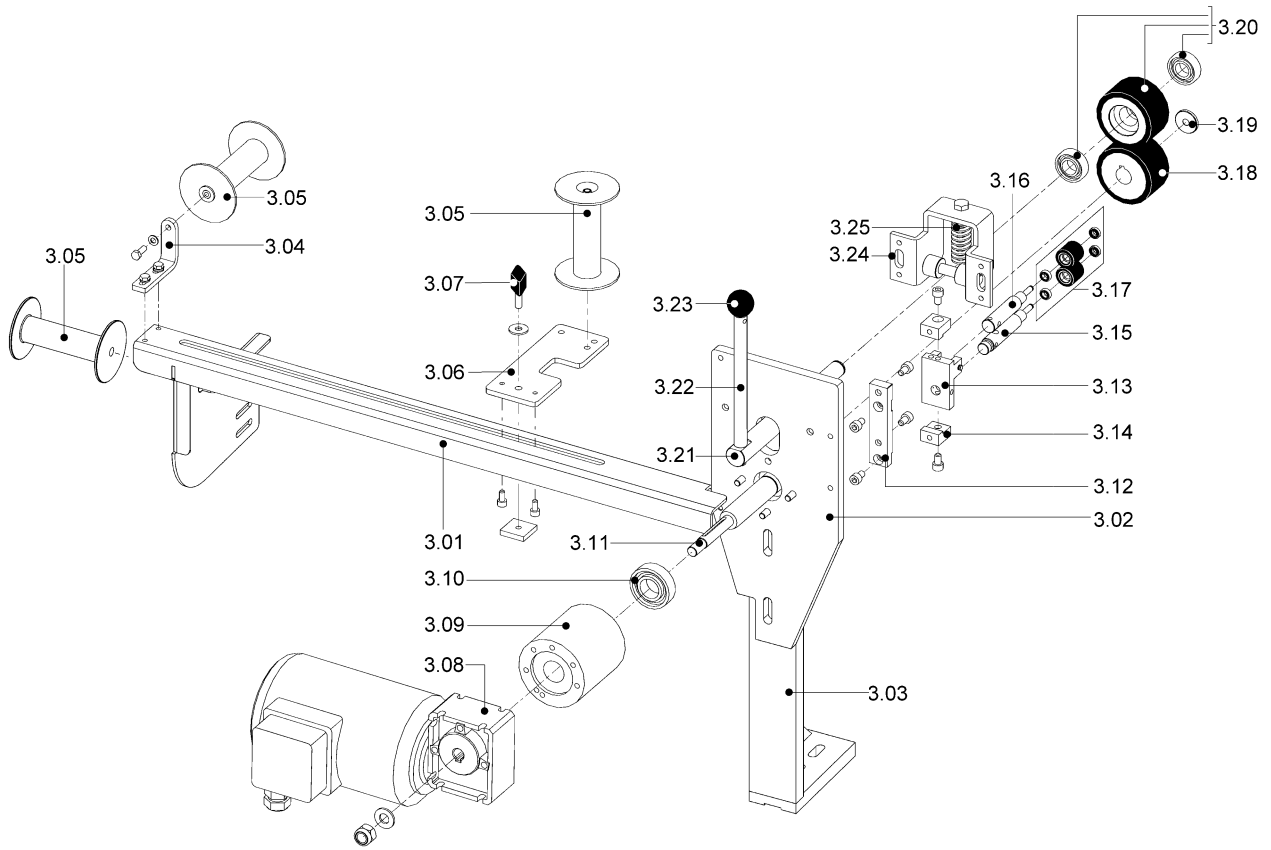


ENTRAINMENT FILM GROUP**3.0**

Pos.	Code	Description
3.01	FM291476	Rollers crosspiece
3.02	FM283574	Plate
3.03	FM282140	Square
3.04	FM291447	Square
3.05	FM250073	Transmission roller
3.06	FM291367	Roller support
3.07	FM510058	Wing knob M6X20
3.08	FE250095	Gearmotor
3.09	FM120059	Flange
3.10	FM610070	Radial bearing
3.11	FM010211	Motor shaft
3.12	FM283010	Plate
3.13	FM290362	Support
3.14	FM283009	Plate
3.15	FM200219	Lower pin
3.16	FM200216	Upper pin
3.17	KR230021	Rollers kit
3.18	FM160713	Wheel
3.19	FM160336	Spacer
3.20	KR230022	Wheel kit
3.21	FM010212	Idle shaft
3.22	FM060005	Lever
3.23	FM510034	Spheric handle
3.24	FM291158	Support
3.25	FM170157	Spring

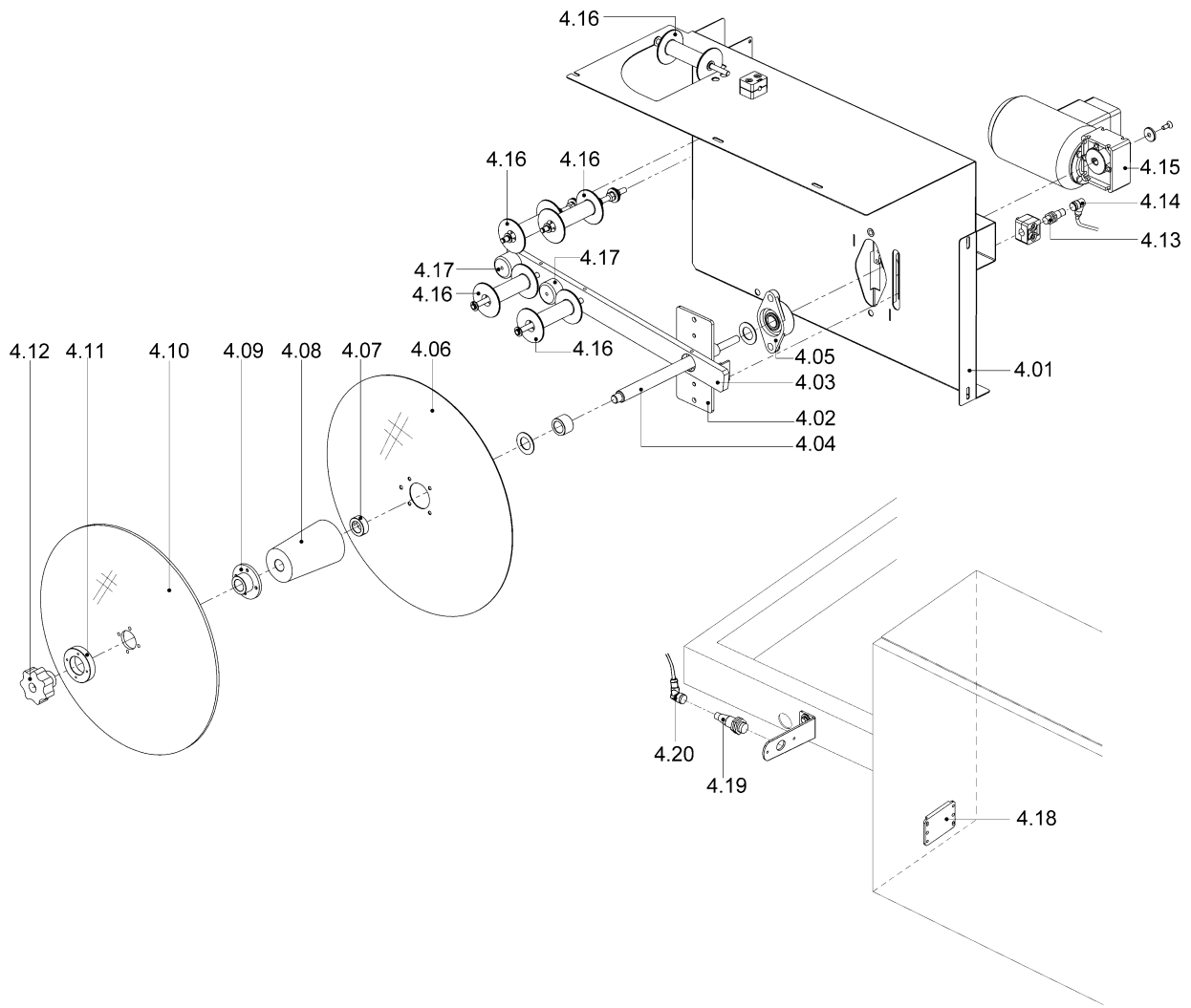
ENTRAINMENT FILM GROUP

3.0



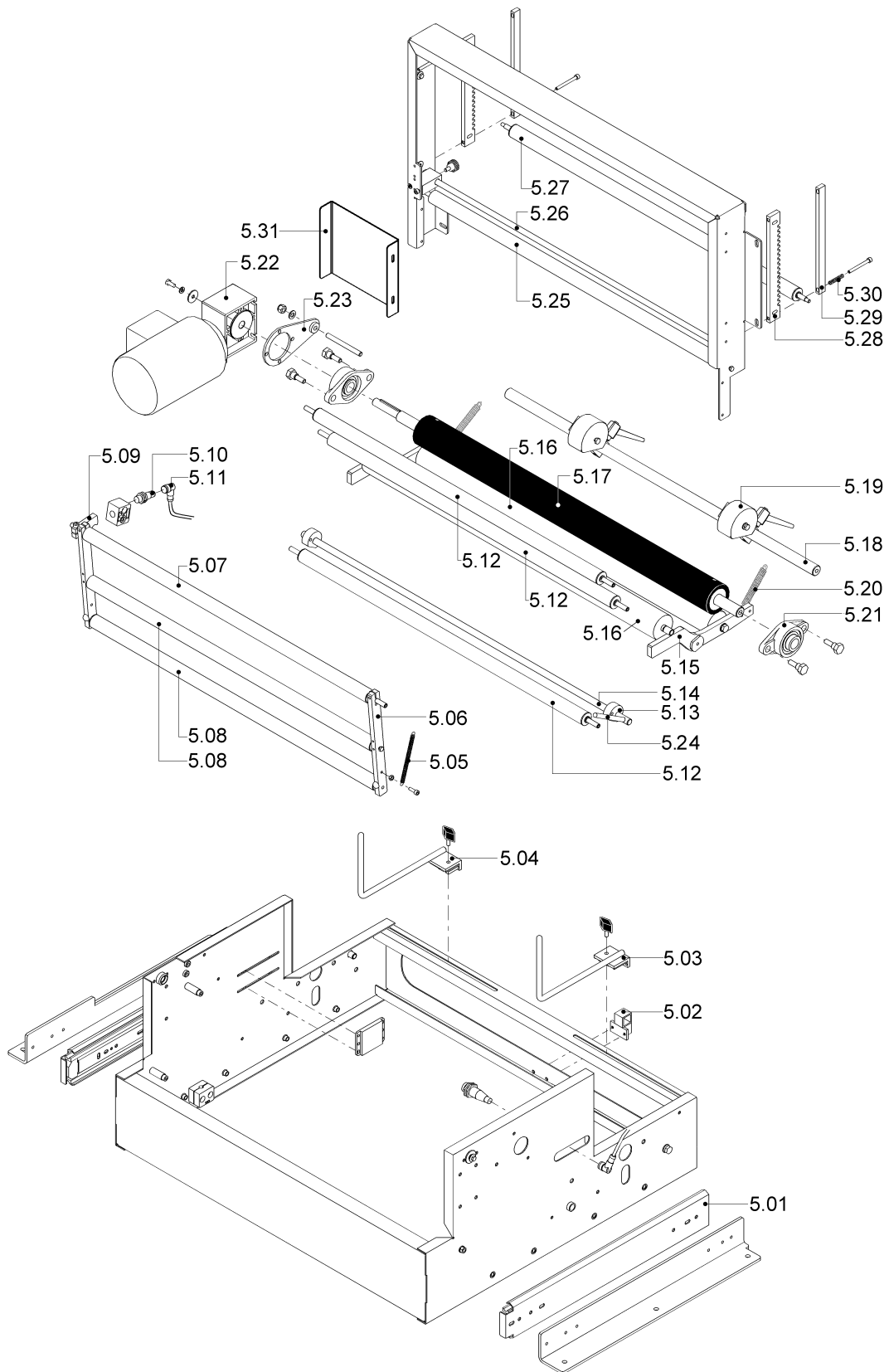
FILM SCRAP STATIONARY AND REWINDER GROUP**4.0**

Pos.	Code	Description
4.01	FM091026	Rewinder case
4.02	FM291439	Plate
4.03	FM060167	Lever
4.04	FM200488	Rewinder pin
4.05	FM610717	Flange support
4.06	FM120028	Rear flange
4.07	FM160963	Ring
4.08	FM250112	Hub
4.09	FM120060	Flange
4.10	FM120061	Front flange
4.11	FM040096	Bracket
4.12	FM510115	Handwheel
4.13	FE220175	Inductive sensor
4.14	FE220171	Connector
4.15	FE250093	Gearmotor
4.16	FM250073	Transmission roller
4.17	FM160360	Bracket
4.18	FE220164	Reflector
4.19	FE220183	Photocell
4.20	FE220171	Connector



ROLL SUPPORT AND UNWINDER FILM GROUP**5.0**

Pos.	Code	Description
5.01	FM140253	Guide couple
5.02	FM510119	Ratchet
5.03	FM140206	Guide
5.04	FM140208	Guide
5.05	FM170198	Spring
5.06	FM283545	Plate
5.07	KR230121	Rocker fulcrum roller kit
5.08	KR230101	Rocker fixed roller kit
5.09	FM283546	Plate
5.10	FE220175	Inductive sensor
5.11	FE220171	Connector
5.12	P0K00439	Roller pre-assembly
5.13	FM070033	Cam
5.14	FM010096	Shaft
5.15	FM283548	Lever
5.16	FM710386	Idle roller
5.17	FM250577	Rubber-coated roller
5.18	FM010201	Shaft
5.19	P0K00670	Microperforator with 32 needles pre-assembly
5.20	FM170186	Spring
5.21	FM610717	Flange support
5.22	FE250094	Gearmotor
5.23	FE250061	Torque arm
5.24	FM060159	Lever
5.25	P0K00439	Deviafilm fixed roller pre-assembly
5.26	FM030109	Opening film rod
5.27	P0K00459	Roller pre-assembly
5.28	FM283552	Plate
5.29	FM283551	Plate
5.30	FM170187	Spring
5.31	FM091583	Case

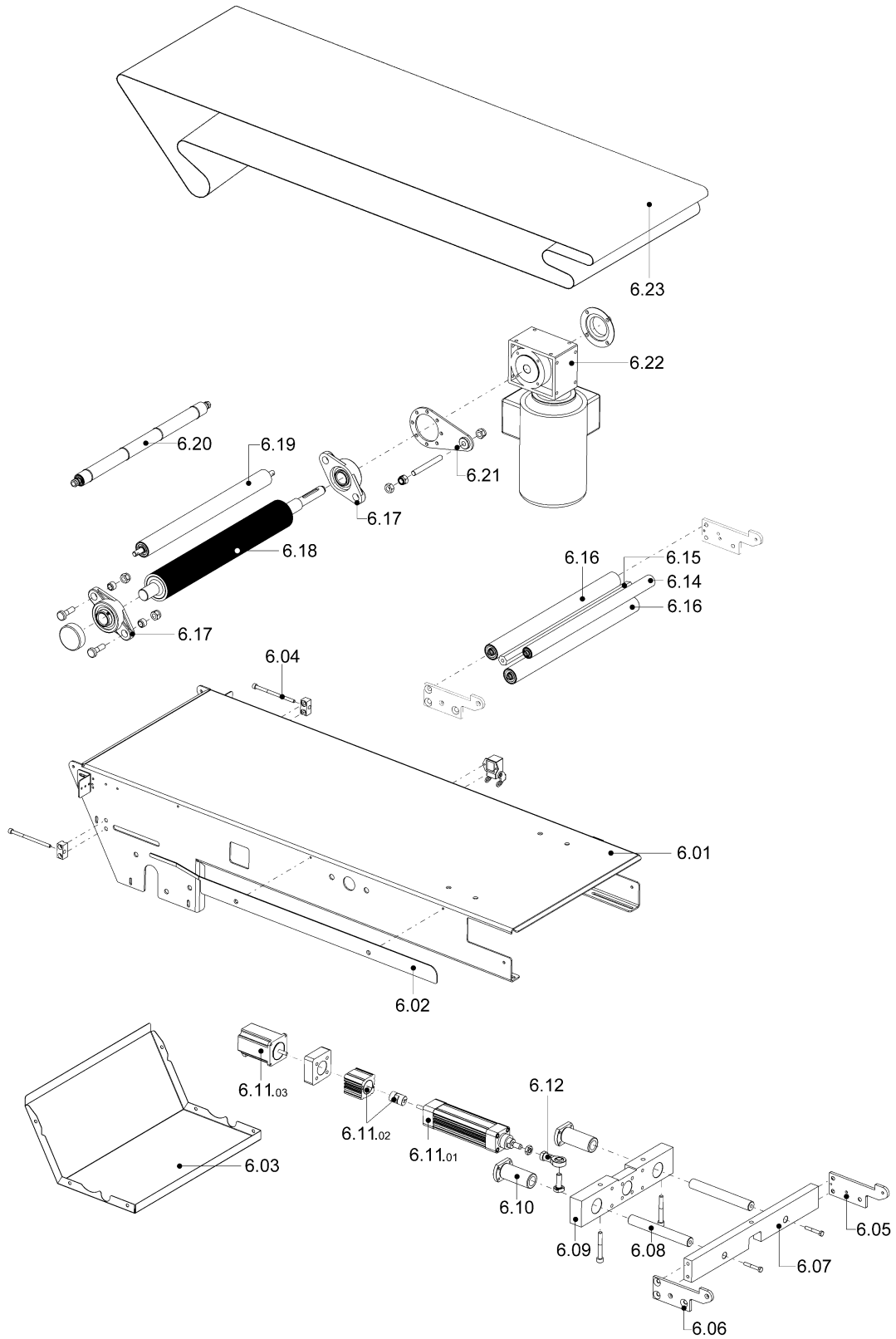


OUTFEED BELT GROUP**6.0**

Pos.	Code	Description
6.01	FM096539	Bed
6.02	FM282370	Long side
6.03	FM091288	Case
6.04	FM851227	Screw
6.05	FM291455	Left support
6.06	FM291454	Right support
6.07	FM283750	Plate
6.08	FM030261	Bar
6.09	FM291304	Support
6.10	FM540215	Bush
6.11	P0K01210	Motor+hood+joint+cylinder pre-assembly
6.11.01	FM580208	Cylinder
6.11.02	FM580209	Hood + joint
6.11.03	FE240060	Stepper motor
6.12	FM640113	Rod end
6.14	FM250248	Roller
6.15	FM160474	Spacer
6.16	FM250252	Roller
6.17	FM610715	Flange support
6.18	FM250250	Rubber-coated roller
6.19	P0K01220	Roller pre-assembly
6.20	P0K01245	Roller pre-assembly
6.21	FE250054	Reaction arm
6.22	FE250053	Gearmotor
6.23	FM710163	Belt

OUTFEED BELT GROUP

6.0

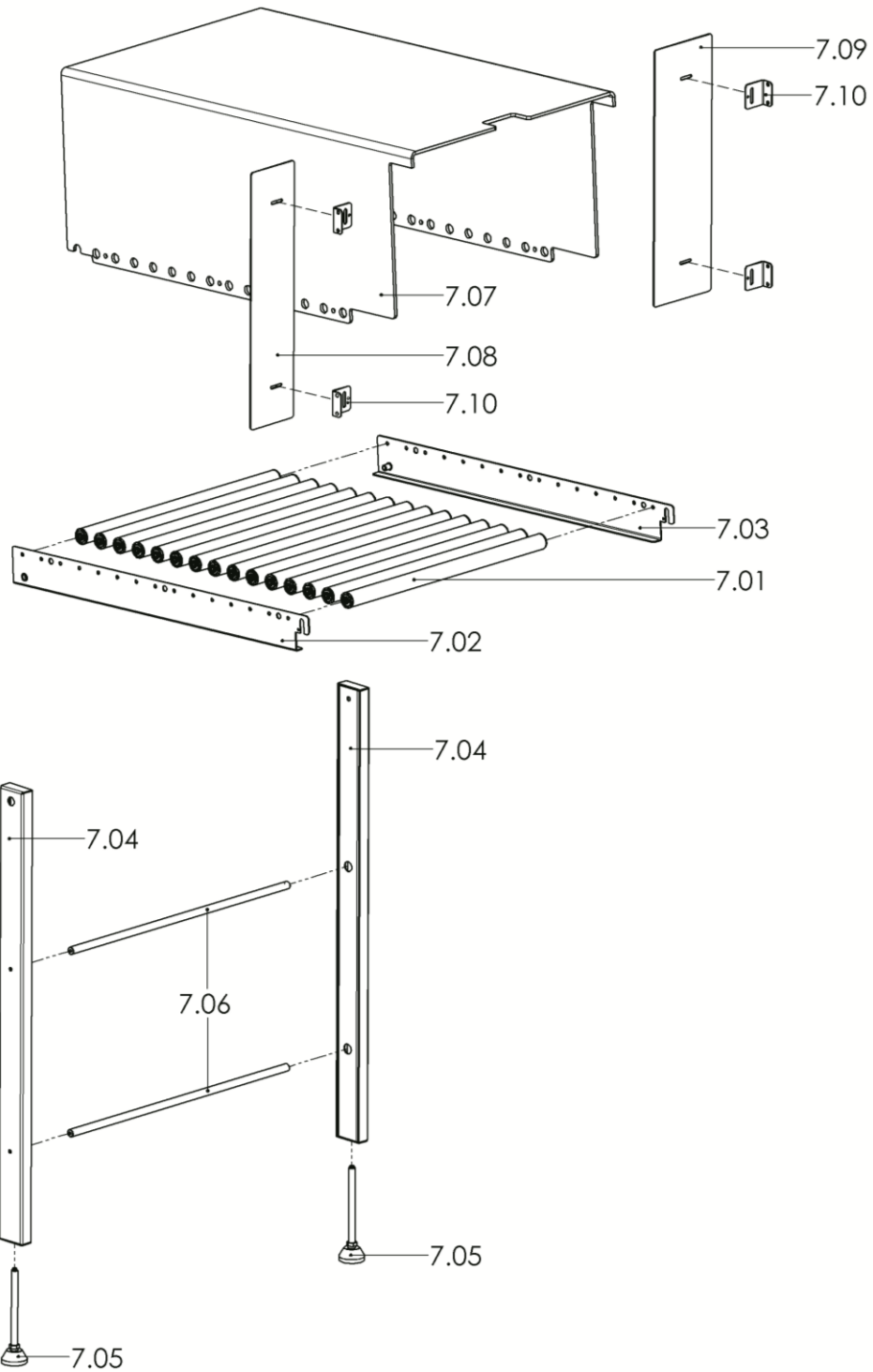


ROLLER PLATE GROUP (optional)**7.0**

Pos.	Code	Description
7.01	P0K00489	Roller pre-assembly
7.02	FM095977	Right side
7.03	FM095978	Left side
7.04	FM095979	Support
7.05	FM510068	Foot
7.06	FM160434	Spacer
7.07	FM230516	Roller protection
7.08	FM096006	Front closure sheet steel
7.09	FM096007	Rear closure sheet steel
7.10	FM290609	Square

ROLLER PLATE GROUP (optional)

7.0

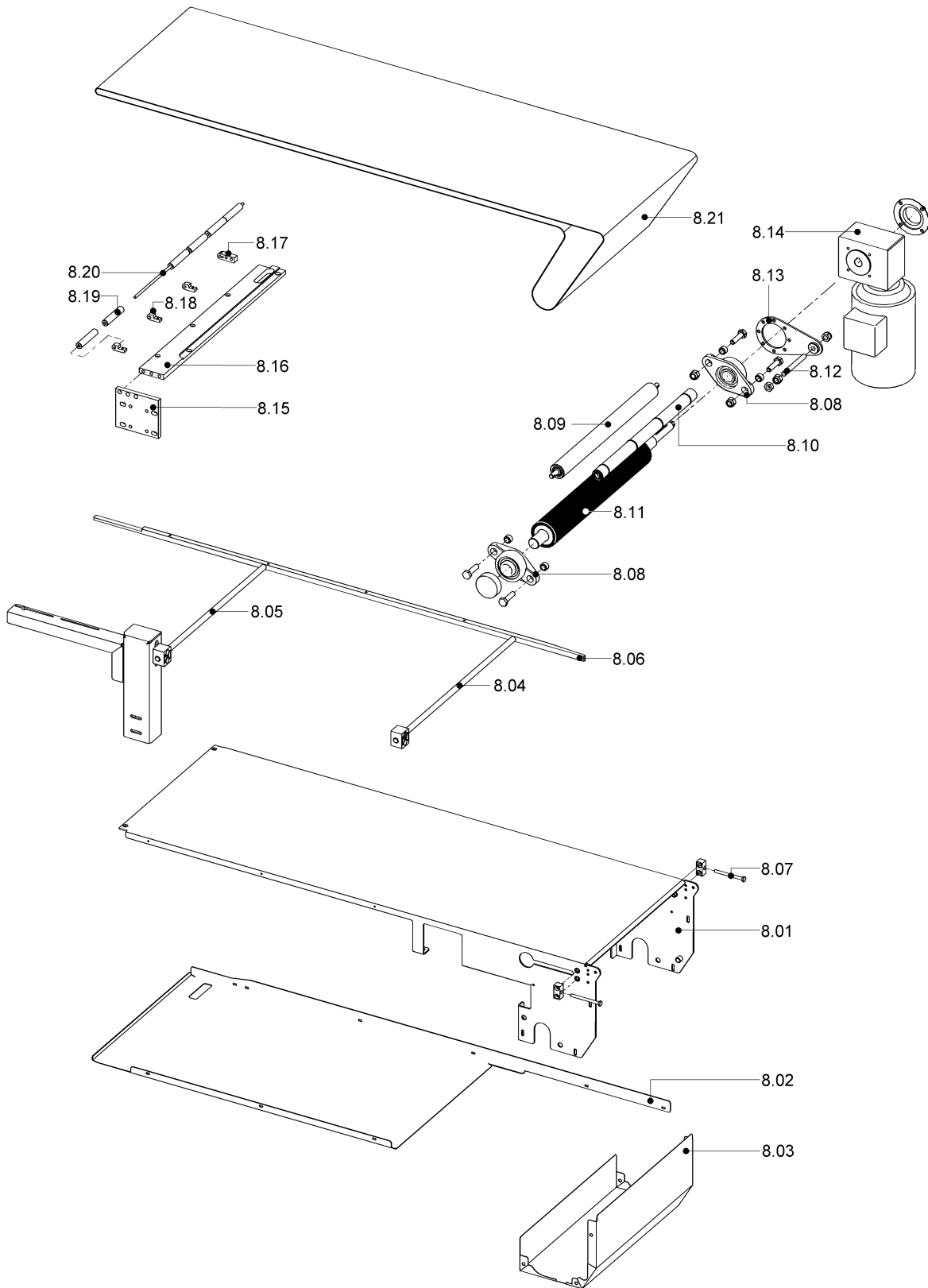


INFEED BELT GROUP**8.0**

Pos.	Code	Description
8.01	FM096538	Bed
8.02	FM096003	Case
8.03	FM091287	Case
8.04	FM030079	Rod
8.05	FM030081	Rod
8.06	FM291442	Product guide
8.07	FM851379	Screw
8.08	FM610715	Flange support
8.09	P0K01220	Roller pre-assembly
8.10	P0K01245	Roller pre-assembly
8.11	FM250250	Rubber-coated roller
8.12	FM851847	Screw
8.13	FE250054	Torque arm
8.14	FE250058	Gearmotor
8.15	FM283581	Plate
8.16	FM291456	Support
8.17	FM290606	Support
8.18	FM040417	Bracket
8.19	FM250176	Roller
8.20	FM030274	Rod
8.21	FM710163	Belt

INFEED BELT GROUP

8.0



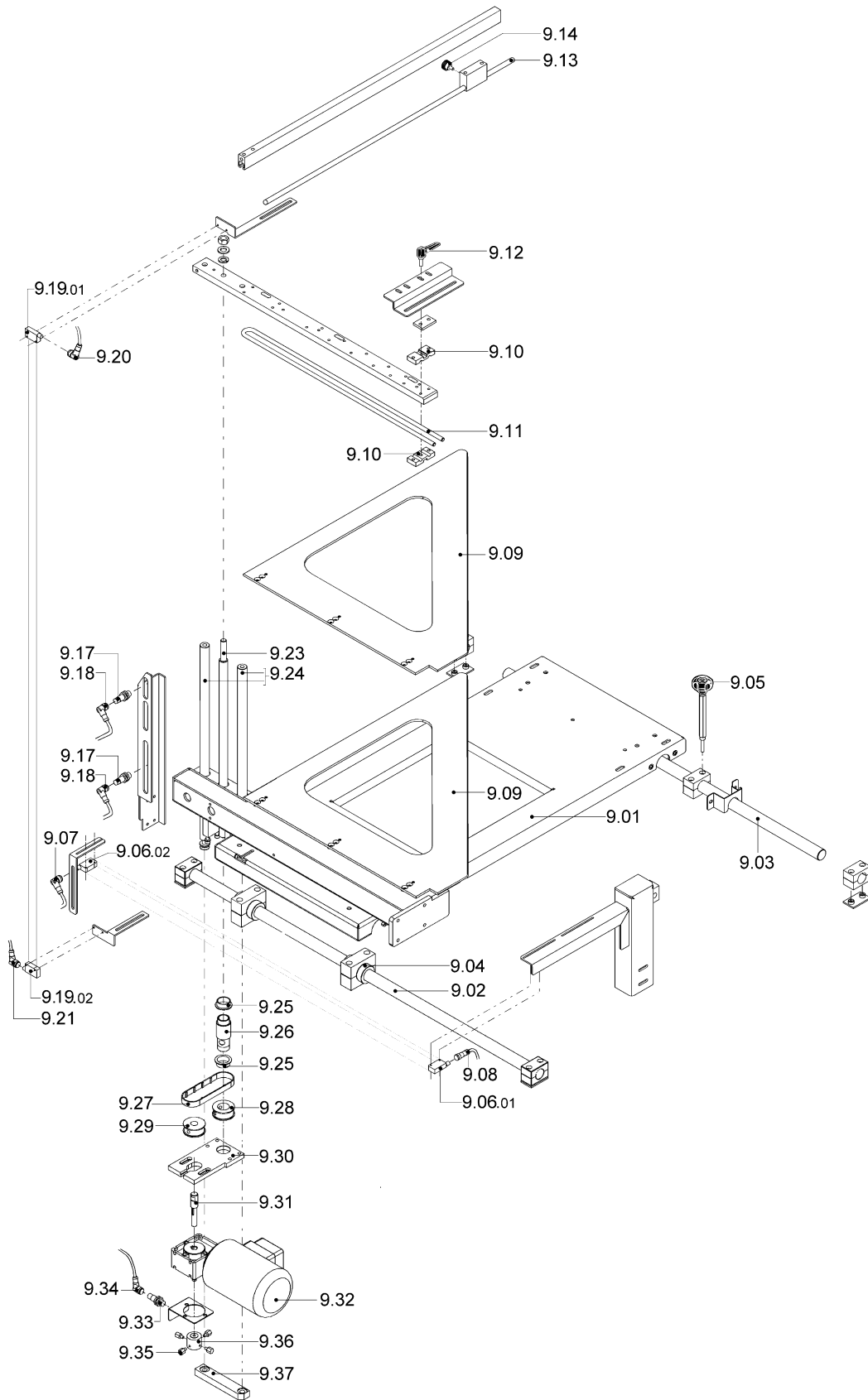
FILM OPENER GROUP

9.0

Pos.	Code	Description
9.01	FM096535	Sheet steel
9.02	FM030271	Sliding rod
9.03	FM030275	Sliding rod
9.04	FM540116	Bearing manifold
9.05	FM510052	Handwheel
9.06	FE220249	Photocell kit (transmitter +receiver)
...9.06.01	-	Transmitter
...9.06.02	-	Receiver
9.07	FE220173	Connector
9.08	FE220176	Connector
9.09	FM282146	Opening film triangle
9.10	FM040095	Rod bracket
9.11	FM030029	Rod
9.12	FM510203	Handle
9.13	FM030109	Rod
9.14	FM510035	Handwheel
9.17	FE220175	Inductive sensor
9.18	FE220171	Connector
9.19	FE220249	Photocell kit (transmitter +receiver)
...9.19.01	-	Transmitter
...9.19.02	-	Receiver
9.20	FE220173	Connector
9.21	FE220173	Connector
9.23	FM030093	Threaded rod
9.24	KR210077	Rods kit
9.25	FM540030	Bush
9.26	FM340144	Threaded bush
9.27	FM530002	Toothed belt
9.28	FM260081	Driven pulley
9.29	FM260082	Motorized pulley
9.30	FM283558	Gearmotor plate
9.31	FM010162	Gearmotor shaft
9.32	FE250056	Gearmotor
9.33	FE220175	Inductive sensor
9.34	FE220171	Connector
9.35	FM160300	Pin for Proximity readout
9.36	FM160301	Washer for sensor readout
9.37	FM290589	Rod support

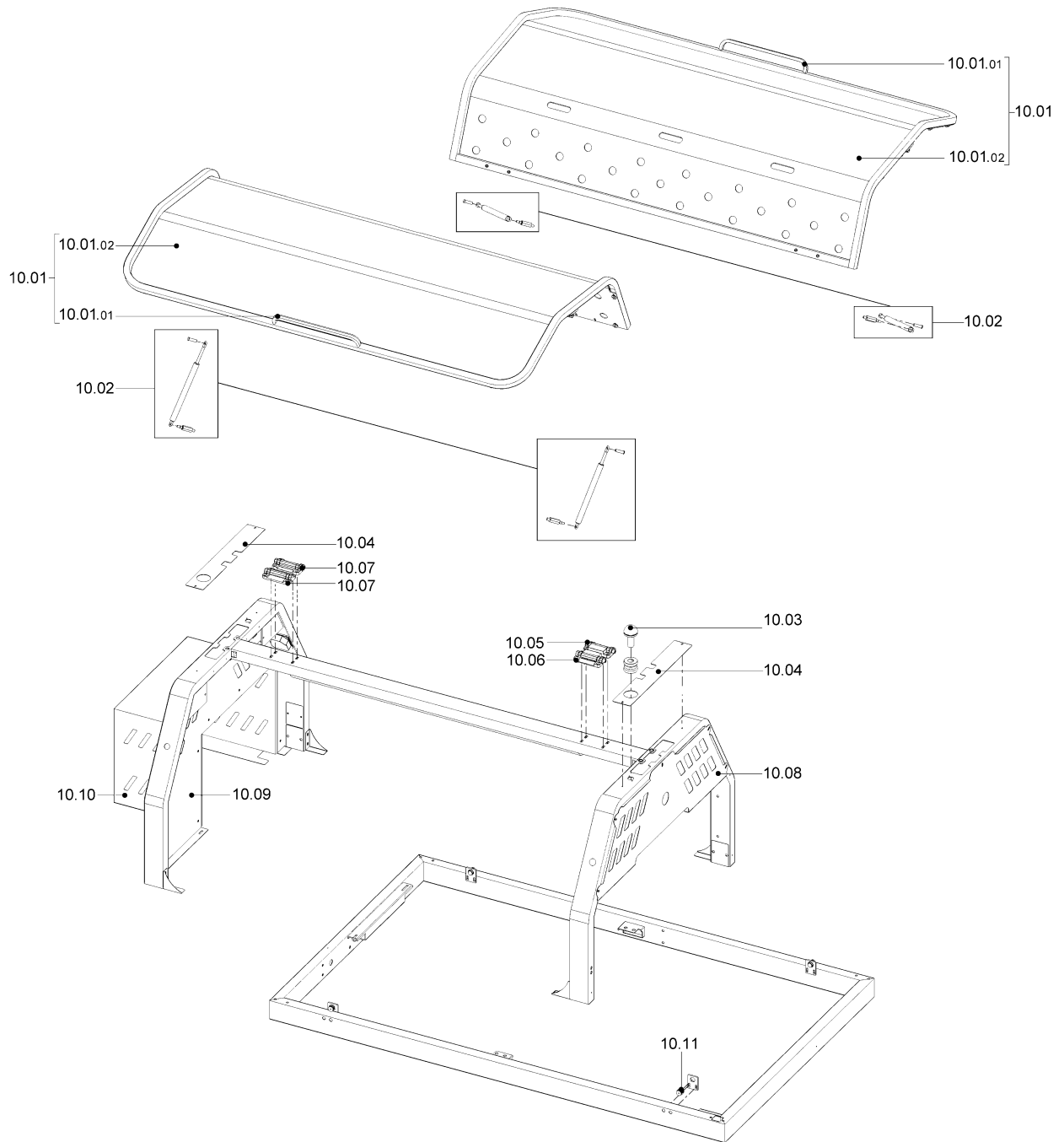
FILM OPENER GROUP

9.0



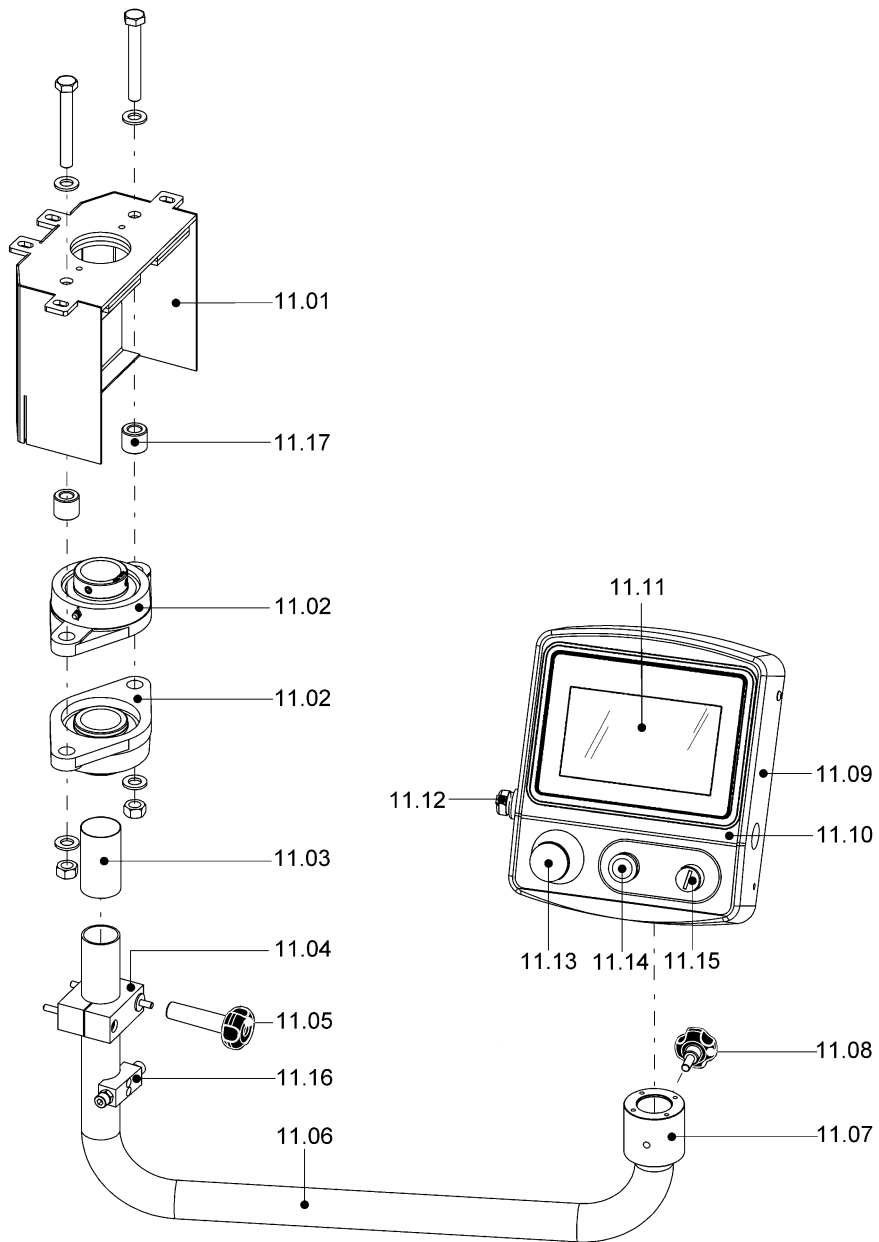
COVERAGE GROUP	10.0
-----------------------	-------------

Pos.	Code	Description
10.01	P0K01009	Door kit
10.01.01	FM510172	Handle
10.01.02	FM230598	Door fender
10.02	KR230122	2 gas springs kit
10.03	FE210044	Led
10.04	FM096547	Coverage
10.05	FE220257	Hinge
10.06	FE220258	Hinge
10.07	FM510183	Hinge
10.08	FM096674	Infeed case
10.09	FM096675	Outfeed case
10.10	FM096532	Coverage
10.11	FM630040	Magnet



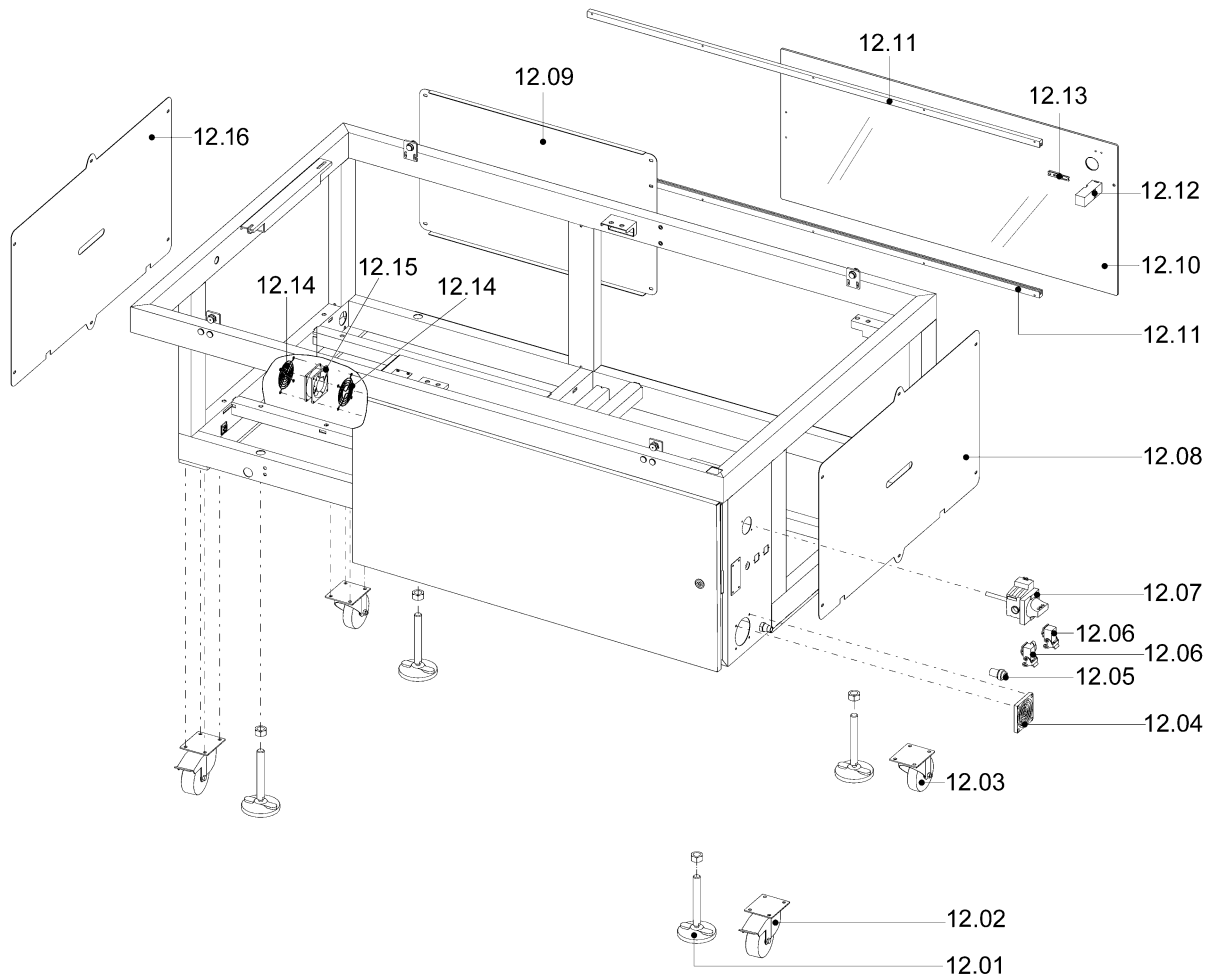
CONTROL PANEL GROUP**11.0**

Pos.	Code	Description
11.01	FM291465	Support
11.02	FM610734	Flange support
11.03	FM160475	Spacer
11.04	FM510170	Blocking collar
11.05	FM510163	Handwheel
11.06	FM300444	Swivel arm
11.07	FM120016	Flange
11.08	FM510052	Handwheel
11.09	FM081068	Control panel coverage
11.10	FM110704	Adhesive
11.11	KR230126	Touch screen
11.12	FE320712	USB port with cable
11.13	FE340005	Emergency push-button
11.14	FE340004	Reset push-button
11.15	FE085006	"Bypass safety protections" selector
11.16	FM040277	Bracket
11.17	FM160488	Spacer



BODYWORK GROUP**12.0**

Pos.	Code	Description
12.01	FM510017	Foot
12.02	FM770551	Wheel with brake
12.03	FM770550	Wheel
12.04	FM720013	Filter
12.05	FE320713	RJ45 socket
12.06	FE340054	Socket
12.07	FE190150	Rotary handle
12.08	FM096667	Side case
12.09	FM096668	Rear case
12.10	FM230599	Door
12.11	FM226016	Door guide
12.12	FE220118	Safety switch
12.13	FE220123	Drive
12.14	FM095963	Fender
12.15	FE260036	Fan
12.16	FM096696	Side case



WIRING SYSTEM GROUP
13.0

Pos.	Code	Description
E2	FE260036	Fan
F1	FE290400	Fuse 10.3X38 AM 1A
F2	FE290401	Fuse 10.3X38 AM 2A
F3	FE290454	Fuse 10.3X38 gG 6A
F4	FE290454	Fuse 10.3X38 gG 6A
F5	FE290403	Fuse 10.3X38 AM 6A
F6	FE290405	Fuse 10.3X38 AM 10A
F7	FE290401	Fuse 10.3X38 AM 2A
F8	FE290407	Fuse 10.3X38 AM 16A
F9	FE290121	Fuse 5X20 T-2A
F10	FE290121	Fuse 5X20 T-2A
F11	FE290121	Fuse 5X20 T-2A
F12	FE290121	Fuse 5X20 T-2A
F13	FE290126	Fuse 5X20 T-6,3A
F14		Optional
FQ1	FE190007	Thermal relay 1,6-2,5A
FQ2	FE190006	Thermal relay 1-1,7A
KA0	FE370100	Safety module
KA1	FE370020	Relay 12A 24VDC
KA2	FE370020	Relay 12A 24VDC
KA6		Optional
KA7		Optional
KA8		Optional
KA9		Optional
K1	KR230077	Base unit PLC M241
K2	FE122025	Expansion
K3	FE122121	16 inputs expansion
K4	FE122128	8 outputs expansion
K5	FE122058	5 doors Switch Ethernet
Q1	FE190110	Automatic switch
Q1.1	FE190150	Rotary handle
QM0A	FE110308	Contactora LC1-D18BL
QM0B	FE110308	Contactora LC1-D18BL
QM1	FE110307	Contactora LC1-D09BL
QM2	FE110307	Contactora LC1-D09BL
QM3	FE110307	Contactora LC1-D09BL
QM4	FE110307	Contactora LC1-D09BL
QM5	FE110307	Contactora LC1-D09BL
QM6	FE110307	Contactora LC1-D09BL
QM7	FE110307	Contactora LC1-D09BL
QS1	FE370040	Relay 10A 4-32 V DC
QS2	FE370040	Relay 10A 4-32 V DC
T1	FE122065	100 240V-24V 5A 120W Infeed
T2	FE122064	100 240V-48V 5A 240W Infeed
TS1	KR230078	Inverter ALTIVAR ATV312HU15M2 1,5KW
TS2	KR230067	Brushless drive
TS3	KR230068	Stepper drive
V1	FE330002	Antinoise filter
V2	FE330002	Antinoise filter
V3	FE330100	Ferrite core
V4	FE330100	Ferrite core
V5	FE330100	Ferrite core
XC1	FE122097	Canopen junction box

