



**Minipack-torre S.p.A.**

Via Provinciale, 54 - 24044 Dalmine (BG) - Italy

Tel. (035) 563525

E-mail: [info@minipack.it](mailto:info@minipack.it)

<http://www.minipack.it>

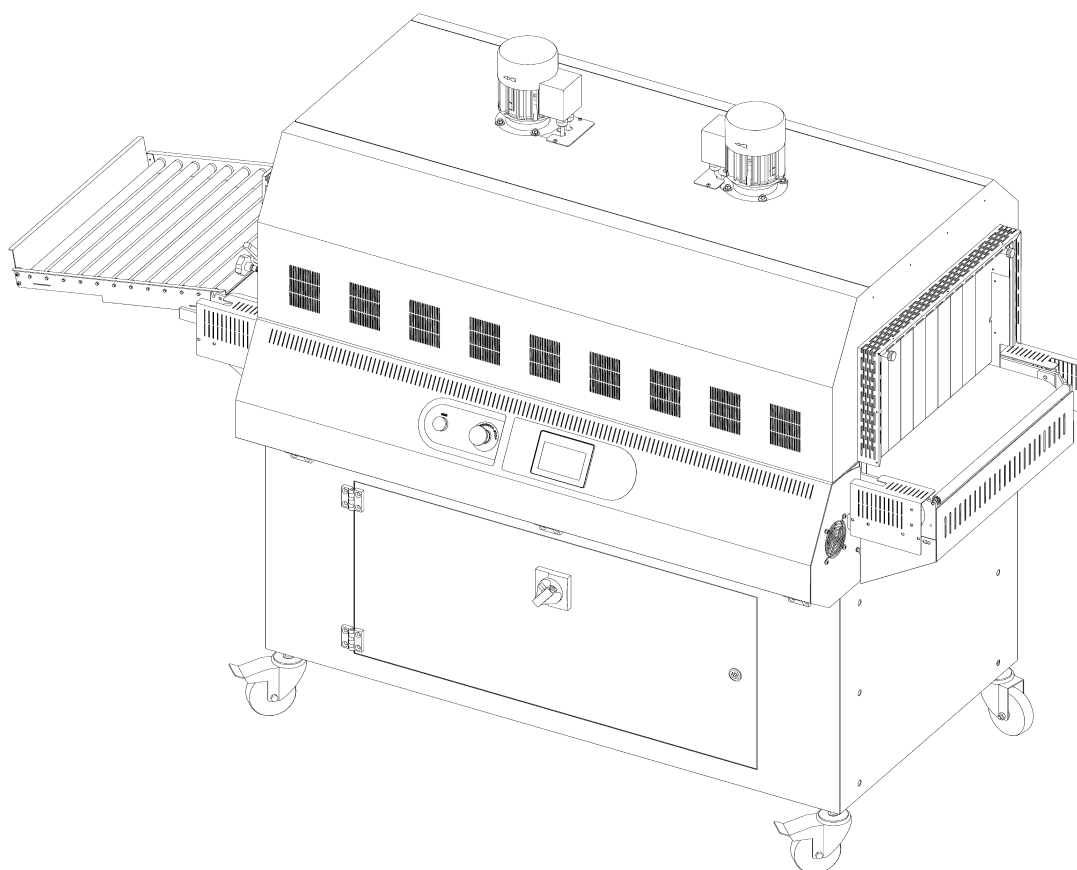


# Tunnel 50 Twin GT

Machine code: **MF25BB15 – MF25IB15**)

## Spare parts catalogue

(Valid from serial number 6801 dated 12.2016)



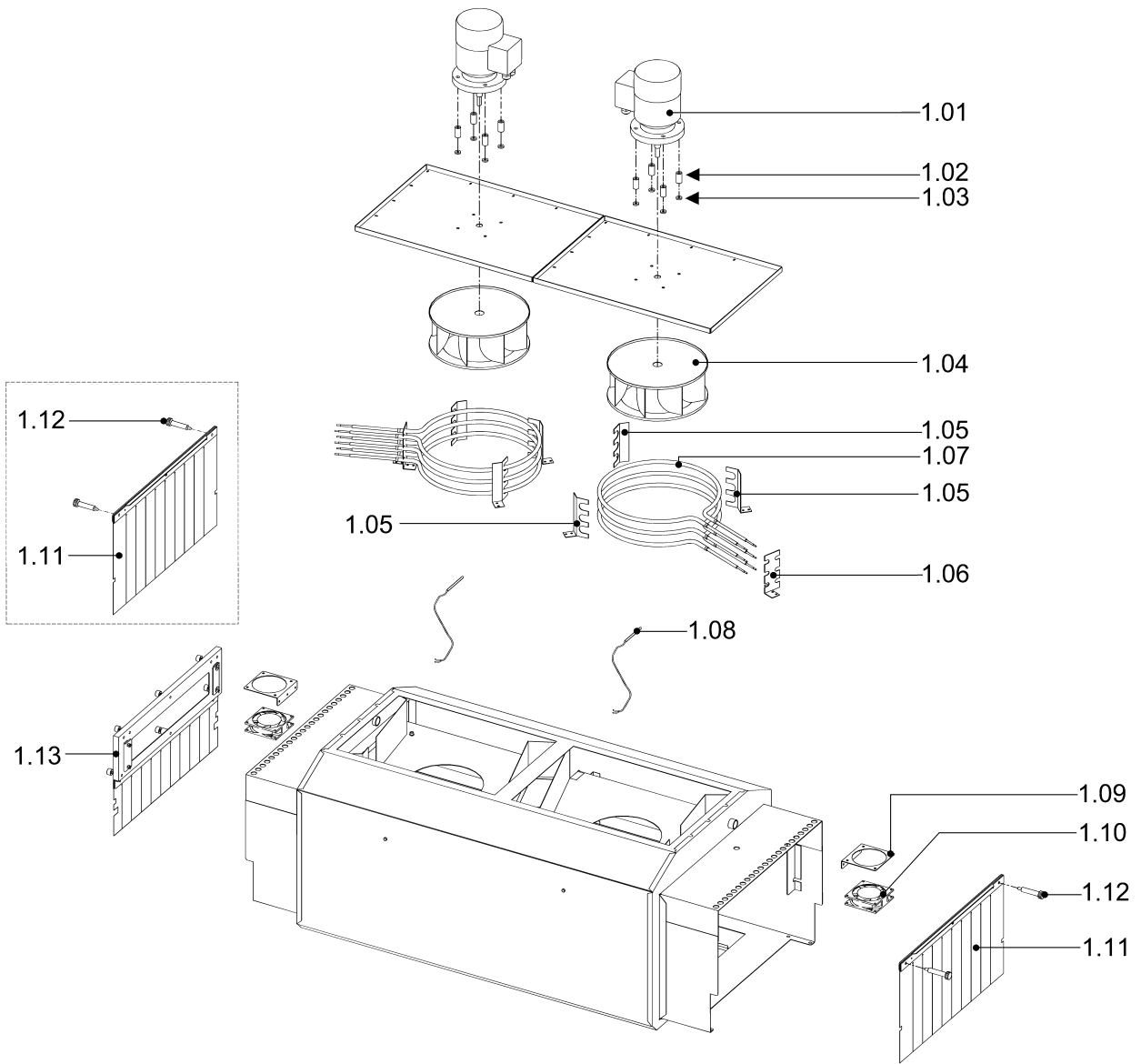
CAREFULLY READ THIS CATALOGUE BEFORE ORDERING ANY SPARE PART



DOC. N. FM112289  
REV. 0  
ED. 04.2022

<b>ITEMS DESCRIPTION</b>	<b>SCHEME 1</b>
--------------------------	-----------------

<b>Pos.</b>	<b>Code</b>	<b>Description</b>
1.01	FE240070	Motor 3 Ph V230-400
1.02	FM160004	Spacer
1.03	FM160074	Insulating washer
1.04	FM830052	Fan
1.05	FM290255	Single heaters support
1.06	FM290249	Double heaters support
1.07	FE380010	2300W resistor
1.08	FE435004	Thermocouple
1.09	FM283510	Fan support square
1.10	FE260033	Fan
1.11	P0K00591	Inlet curtain pre-assembly
	P0K01296	Stainless steel inlet curtain pre-assembly
1.12	FM150105	Curtain fastening knob
1.13	P0K00590	Outlet curtain pre-assembly
	P0K01297	Stainless steel outlet curtain pre-assembly



<b>ITEMS DESCRIPTION</b>	<b>SCHEME 2</b>
--------------------------	-----------------

Pos.	Code	Description
------	------	-------------

<b>New version (4 air deflectors)</b>
---------------------------------------

2.01	FM280289	Left air deflector
2.02	FM280288	Right air deflector

<b>Old version (2 air deflectors)</b>
---------------------------------------

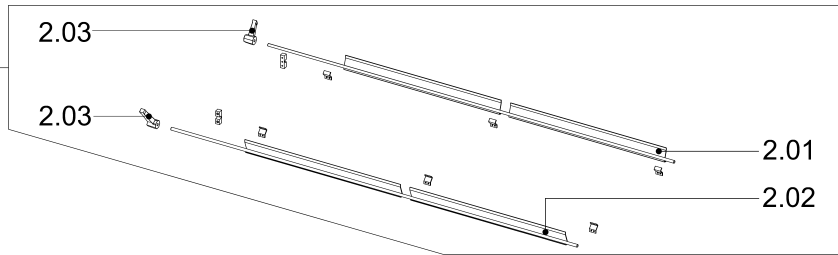
2.01	FM281667	Left air deflector
2.02	FM281666	Right air deflector

2.03	FM510037	Fixed lever
2.04	FM010319	Rod
2.05	FM150102	Handwheel
2.06	FM040533	Block
2.07	FM291347	Plate
2.08	FM010321	Shaft
2.09	FM291348	Right cam support plate
2.10	FM291358	Left cam support plate
2.11	FM710502	Belt
	KR250020	2 Links belt kit
	KR250021	5 Links belt kit
2.12	P0K01213	Fitting roll pre-assembly
2.13	FM170193	Traction spring
2.14	FM260349	Pinion
2.15	FM160965	Conveyor belt return wheel
2.16	FM610729	Flange support
	<b>FM610737</b>	Stainless steel flange support
2.17	FM096606	RRAL9005B. colour guard
	<b>FM096747</b>	Stainless steel guard
2.18	FM096607	RAL9005B. colour guard
	<b>FM096748</b>	Stainless steel guard
2.19	FE240087	Motor H63 HP0,25 220-240-380-415V
2.20	FM760022	Reduction gear RMI 28 F 1:20
2.21	RU250002	Roller conveyor 50x50
	<b>RU250003</b>	Stainless steel roller conveyor 50x50
2.21.01	FM710342	Idle roll
2.22	FM096542	RAL9005B. colour case
	<b>FM096754</b>	Stainless steel case
2.23	FM096574	RAL9005B. colour case
	<b>FM096750</b>	Stainless steel case

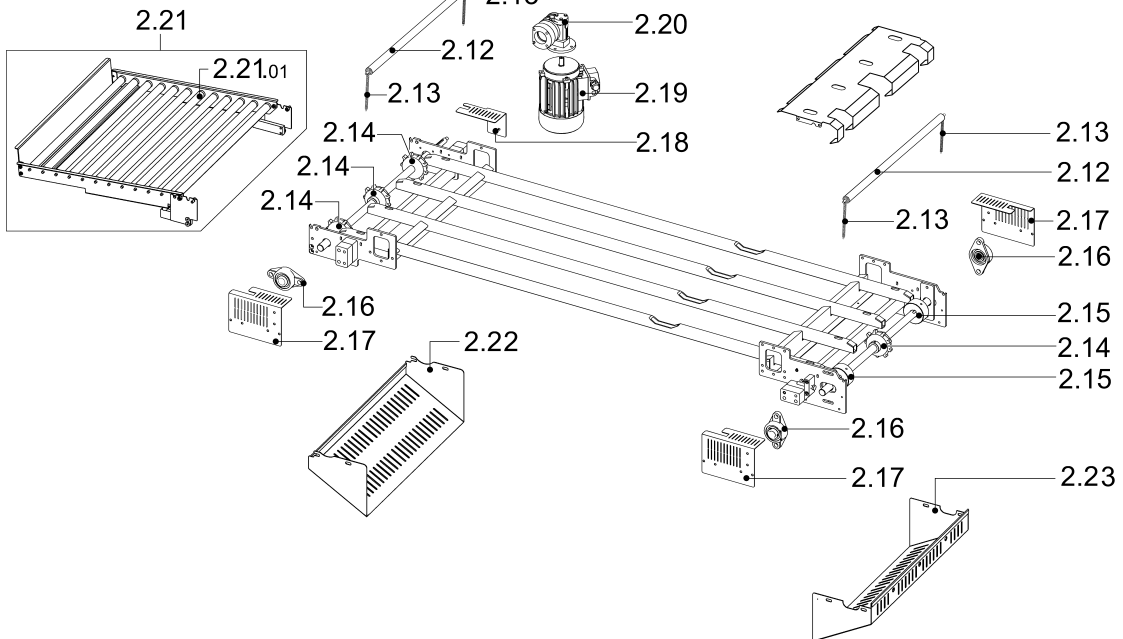
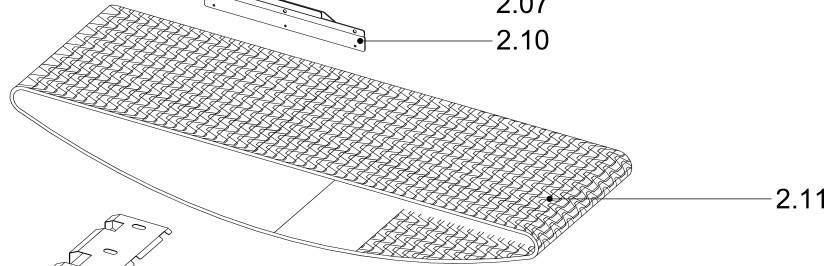
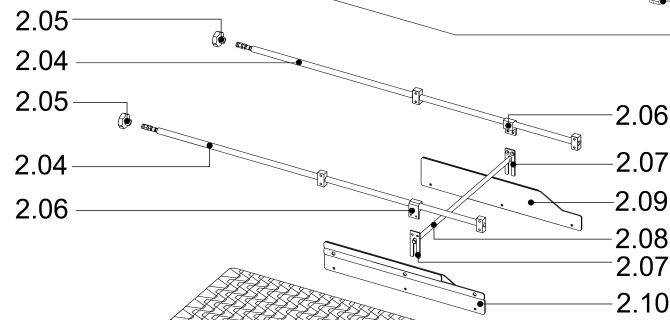
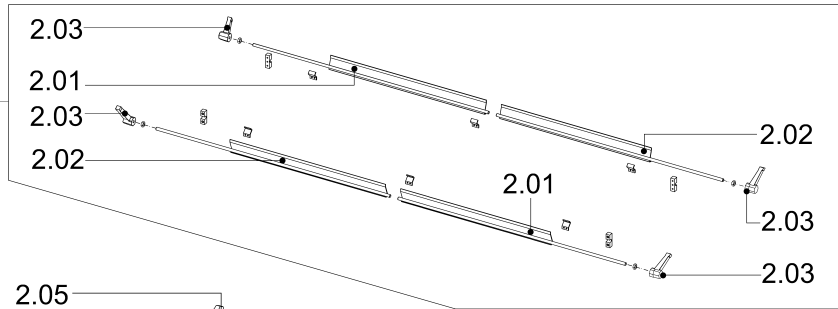
**MACHINE DETAIL DRAWING**

**SCHEME 2**

Old version  
2 air deflectors

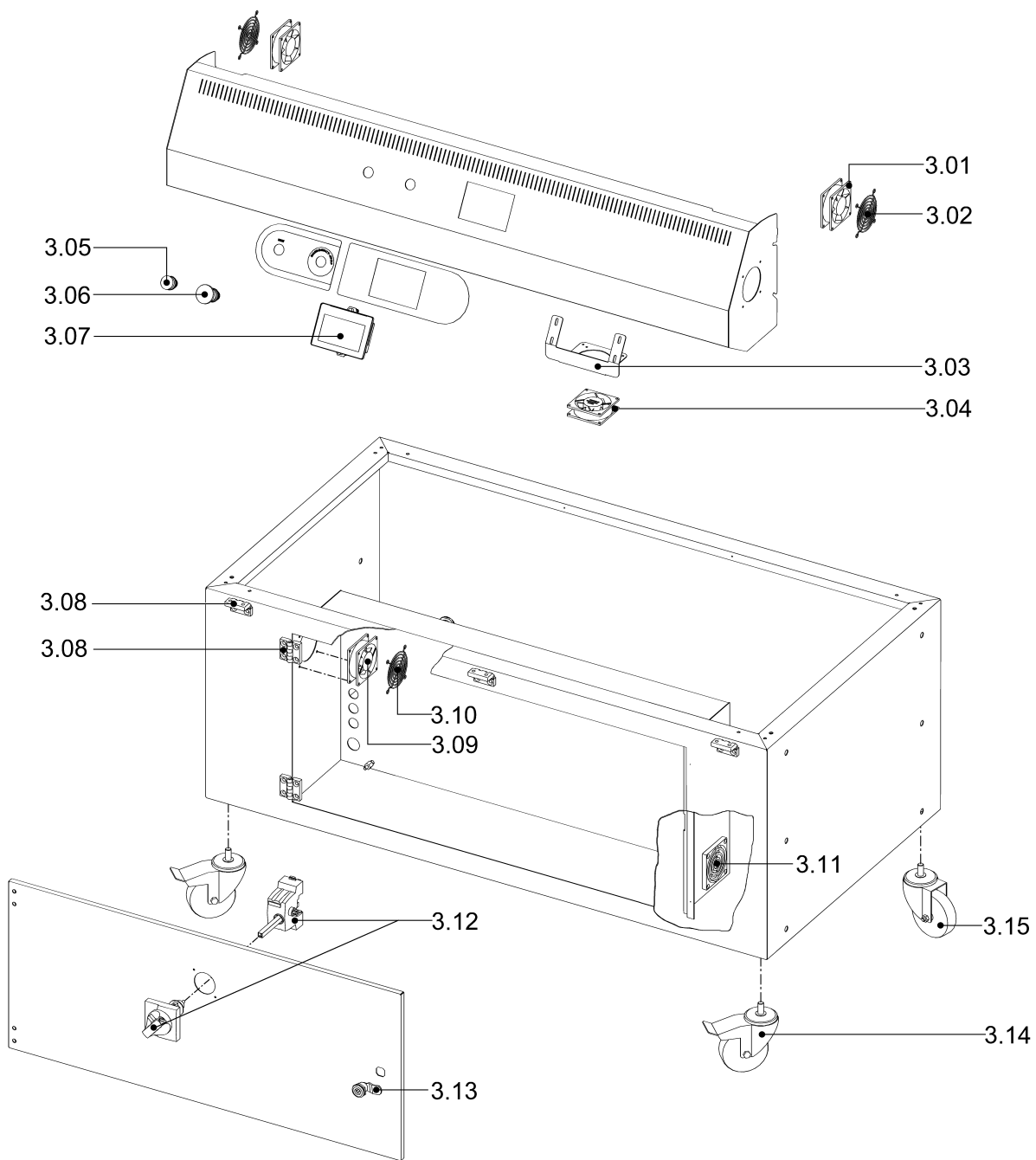


New version  
4 air deflectors



<b>ITEMS DESCRIPTION</b>	<b>SCHEME 3</b>
--------------------------	-----------------

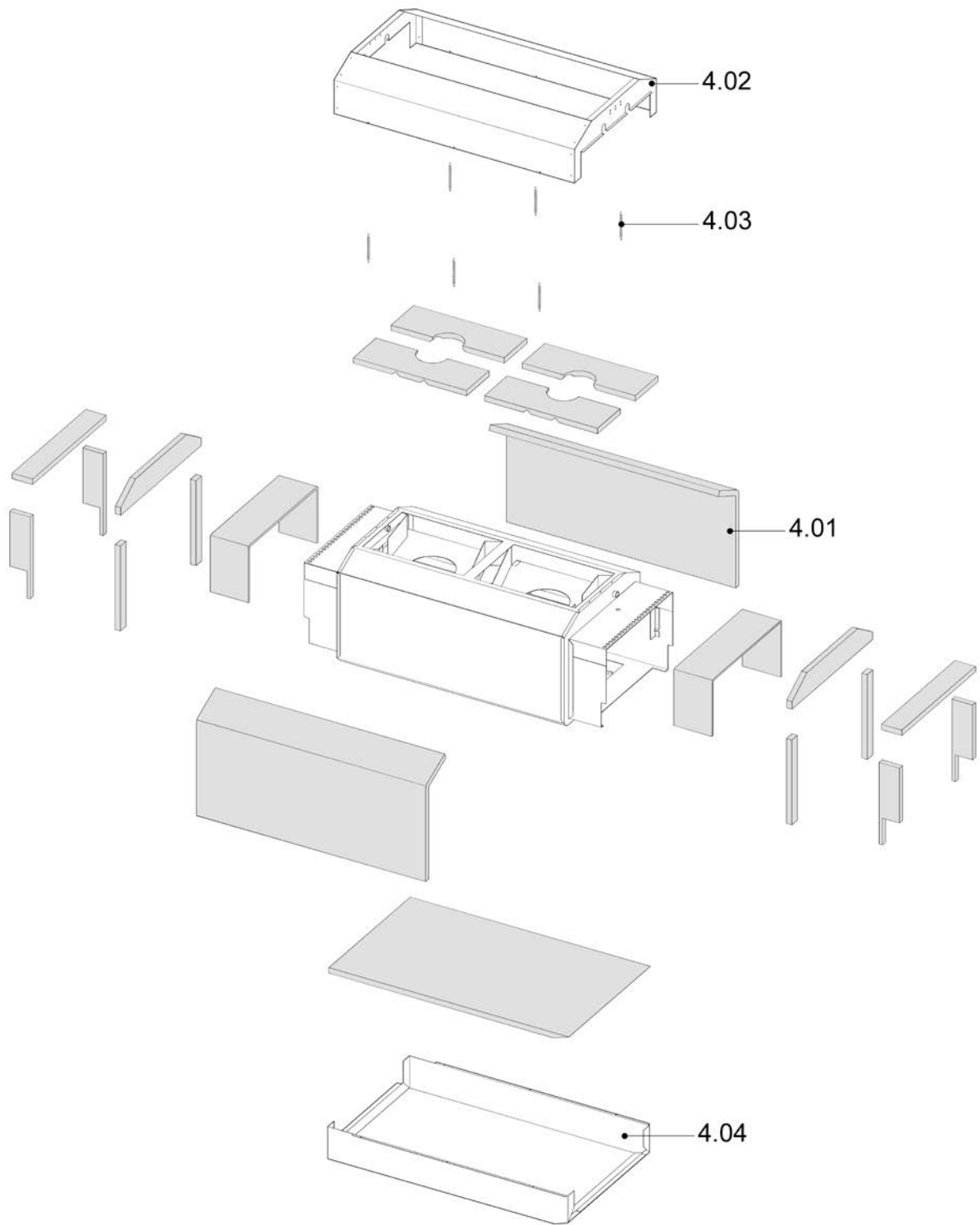
<b>Pos.</b>	<b>Code</b>	<b>Description</b>
3.01	FE260036	Fan
3.02	FM095963	Protection grid
3.03	FM092111	Support fan
3.04	FE260036	Fan
3.05	FE340004	Reset pushbutton
3.06	FE340005	Emergency pushbutton
3.07	KR250013	Touch screen
3.08	FM510084	Hinge
3.09	FE260036	Fan
3.10	FM095963	Protection grid
3.11	FM720013	Filter
3.12	FE190150	Black handle
3.13	FM510081	Lever latch
3.14	FM770512	Wheel Ø100 with brake
	FM770525	Stainless steel wheel Ø100 with brake
3.15	FM770511	Wheel Ø100
	FM770526	Stainless steel wheel Ø100



<b>ITEMS DESCRIPTION</b>	<b>SCHEME 4</b>
--------------------------	-----------------

<b>Pos.</b>	<b>Code</b>	<b>Description</b>
4.01	FM195152	Insulating panels kit
4.02	FM095653	Upper insulation case
4.03	FM170119	Spring
4.04	FM095652	Lower insulation case

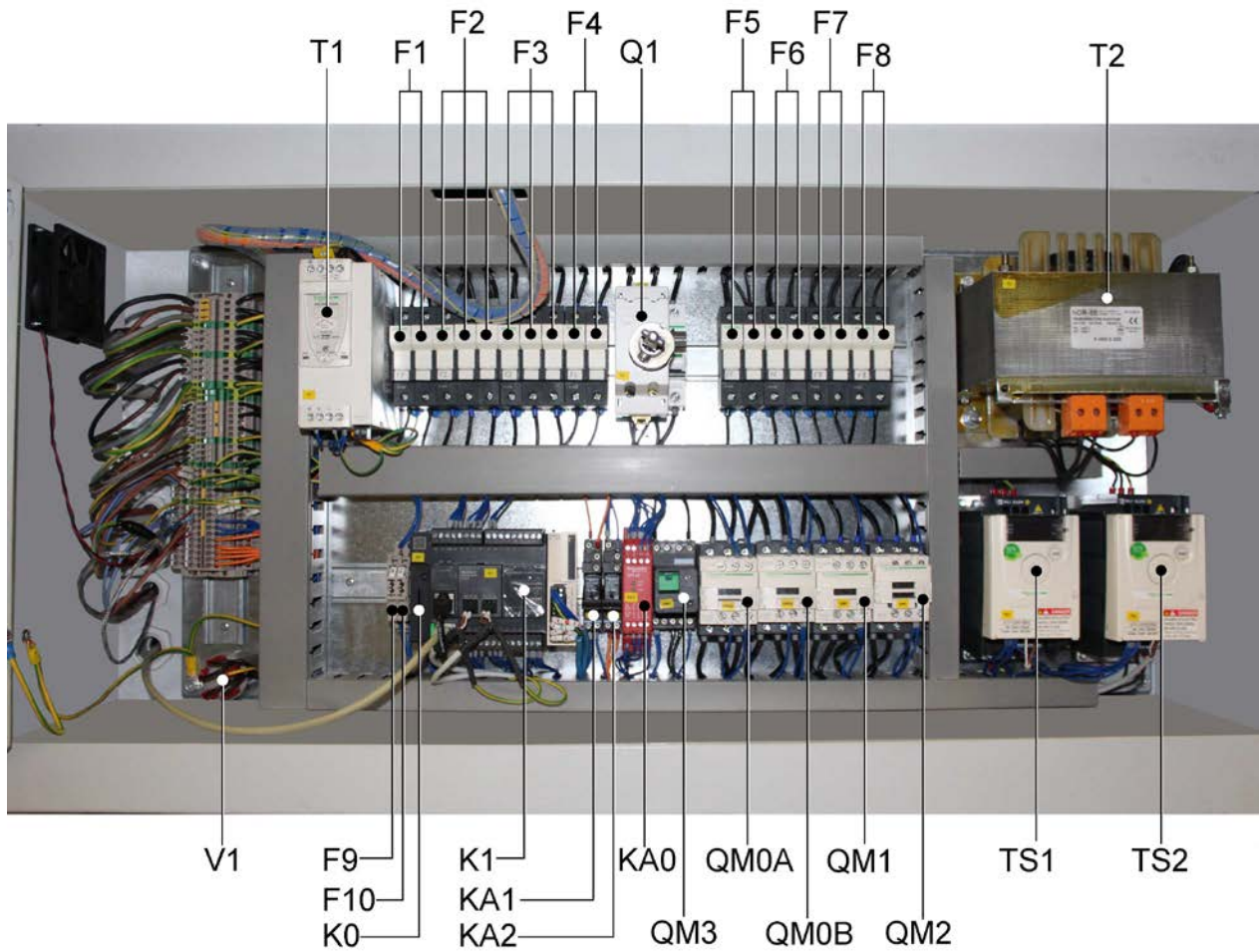




**ITEMS DESCRIPTION**
**SCHEME 5**
**CE250B15: valid from serial number 6801 up to 6820**

Pos.	Code	Description
F1	FE290410	Fuse 10.3X38 AM 0,5A (400V)
F2	FE290405	Fuse 10.3X38 AM 10A (400V)
F3	FE290405	Fuse 10.3X38 AM 10A (400V)
F4	FE290403	Fuse 10.3X38 AM 6A (400V)
F5	FE290410	Fuse 10.3X38 AM 0,5A (400V)
F6	FE290410	Fuse 10.3X38 AM 0,5A (400V)
F7	FE290402	Fuse 10.3X38 AM 4A (400V)
F8	FE290404	Fuse 10.3X38 AM 8A (400V)
F9	FE290121	Fuse 5X20 T 2A (400V)
F10	FE290121	Fuse 5X20 T 2A (400V)
K0	KR250014	PLC M221 (TM221CE24T)
K1	FE122024	Cartridge M221 - 2 analog voltage outputs
KA0	FE370100	Safety module
KA1	FE370020	Relay 12A 24VDC
KA2	FE370020	Relay 12A 24VDC
Q1	no code	Main switch
QM1	FE110307	Contacteur LC1-D09BL
QM2	FE110307	Contacteur LC1-D09BL
QM3	FE370002	Relay 24VCC
QM0A	FE110308	Contacteur LC1-D18BL
QM0B	FE110308	Contacteur LC1-D18BL
T1	FE122041	100-500V 200V 5A 120W Infeed
T2	FE440570	Transformer 1700VA (400V)
TS1	KR250015 (FE121002)	Belt inverter
TS2	KR250016 (FE121029)	Fans motors inverter
V1	FE330002	Antinoise filter

CE250B15: valid from serial number 6801 up to 6820



**ITEMS DESCRIPTION**

**SCHEME 5.1**

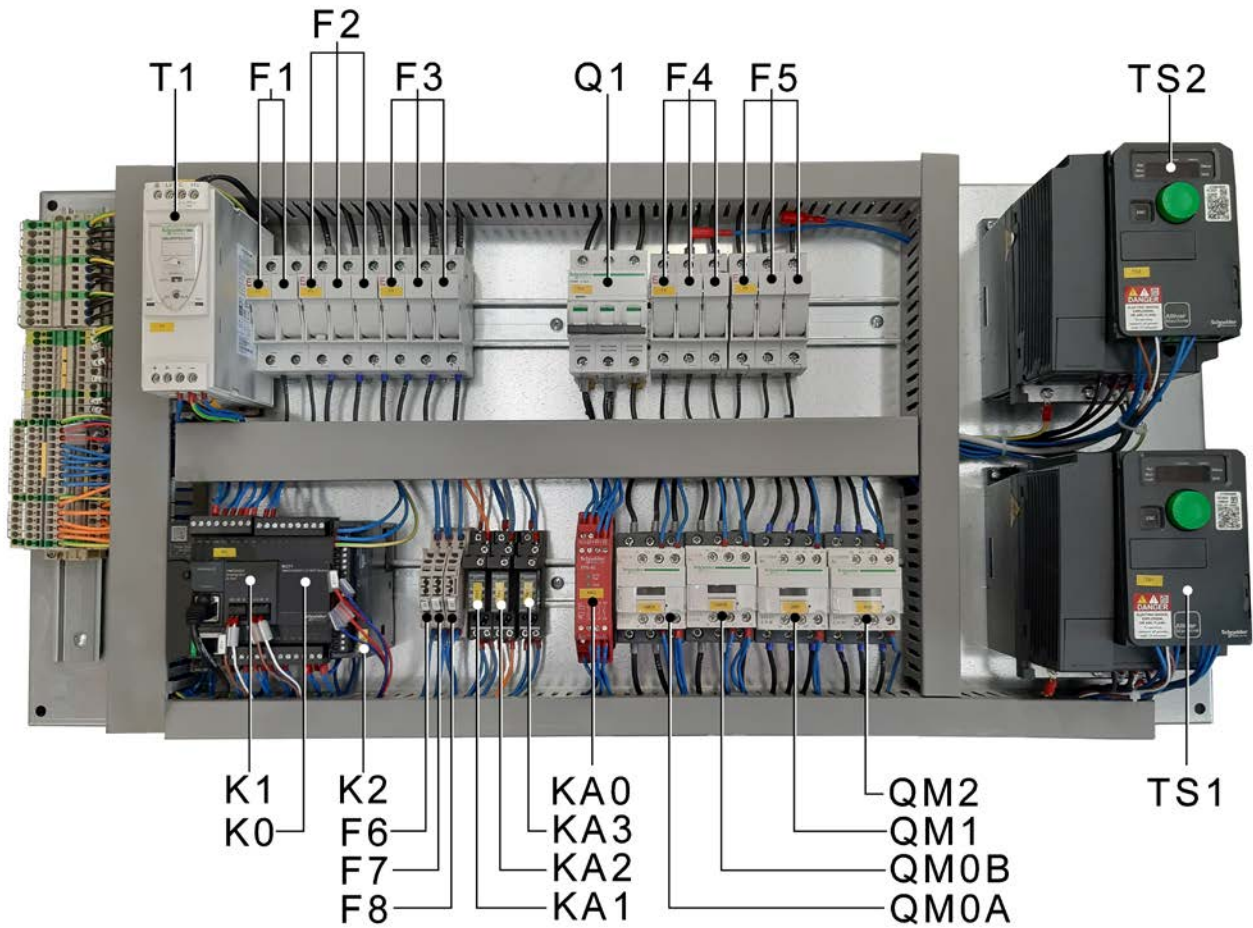
**CE250B16:** valid from serial number 6967 up to **xxxx**

Electrical system with **"Schneider"** inverter

Pos.	Code	Description
F1	FE290410	Fuse 10.3X38 AM 0,5A (400V)
F2	FE290405	Fuse 10.3X38 AM 10A (400V)
F3	FE290405	Fuse 10.3X38 AM 10A (400V)
F4	FE290401	Fuse 10.3X38 AM 2A (400V)
F5	FE290402	Fuse 10.3X38 AM 4A (400V)
F6	FE290121	Fuse 5X20 T 2A (400V)
F7	FE290121	Fuse 5X20 T 2A (400V)
F8	FE290121	Fuse 5X20 T 2A (400V)
K0	KR250014 KR250019	PLC M221 (TM221CE24T) PLC M221 (TM221CE40T)
K1	FE122024	Cartridge M221 - 2 analog voltage outputs
K2	FE122127	4 analogic inputs temperature expansion
KA0	FE370100	Safety module
KA1	FE370020	Relay 12A 24VDC
KA2	FE370020	Relay 12A 24VDC
KA3	FE370020	Relay 12A 24VDC
Q1	no code	Automatic switch
QM1	FE110307	Contacteur LC1-D09BL
QM2	FE110307	Contacteur LC1-D09BL
QM0A	FE110308	Contacteur LC1-D18BL
QM0B	FE110308	Contacteur LC1-D18BL
T1	FE122023	100-500V 24V 3A 72W Infeed
TS1	KR250025 (FE121032)	Belt inverter (0,37kW)
TS2	KR250026 (FE121033)	Fans motors inverter (0,55kW)

CE250B16: valid from serial number 6967 up to **XXXX**

Electrical system with "Schneider" inverter



**ITEMS DESCRIPTION**

**SCHEME 5.2**

**CE250B17:** valid from serial number **xxxx**

Electrical system with **“Control Techniques”** inverter

Pos.	Code	Description
F1	FE290400	Fuse 10.3X38 AM 1A (400V)
F2	FE290405	Fuse 10.3X38 AM 10A (400V)
F3	FE290405	Fuse 10.3X38 AM 10A (400V)
F4	FE290454	Fuse 10.3X38 gG 6A (400V)
F5	FE290454	Fuse 10.3X38 gG 6A (400V)
F6	FE290121	Fuse 5X20 T 2A (400V)
F7	FE290121	Fuse 5X20 T 2A (400V)
F8	FE290121	Fuse 5X20 T 2A (400V)
K0	KR250014	PLC M221 (TM221CE24T)
	KR250019	PLC M221 (TM221CE40T)
K1	FE122024	Cartridge M221 - 2 analog voltage outputs
K2	FE122127	4 analogic inputs temperature expansion
KA0	FE370100	Safety module
KA1	FE370020	Relay 12A 24VDC
KA2	FE370020	Relay 12A 24VDC
KA3	FE370020	Relay 12A 24VDC
Q1	no code	Automatic switch
QM1	FE110307	Contacteur LC1-D09BL
QM2	FE110307	Contacteur LC1-D09BL
QM0A	FE110308	Contacteur LC1-D18BL
QM0B	FE110308	Contacteur LC1-D18BL
T1	FE122023	100-500V 24V 3A 72W Infeed
TS1	KR250027 (FE121062)	Belt inverter (0,37kW)
TS2	KR250028 (FE121063)	Fans motors inverter (0,55kW)

CE250B17: valid from serial number **xxxx**

Electrical system with "Control Techniques" inverter

