



Minipack-torre S.p.A.

Via Provinciale, 54 - 24044 Dalmine (BG) - Italy

Tel. (035) 563525

E-mail: info@minipack.it

<http://www.minipack.it>

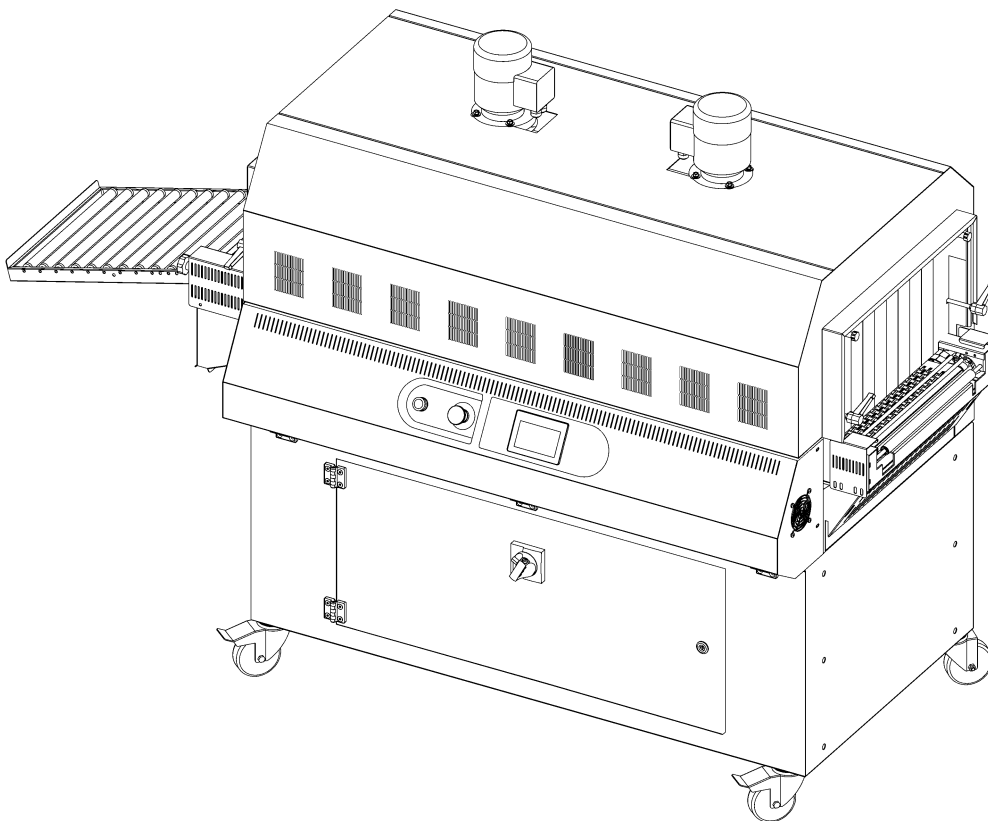


Tunnel 50 Twin GT

(Machine code: **MF25BB16**)

Spare parts catalogue

(Valid from serial number 2340487 dated 03.2023)



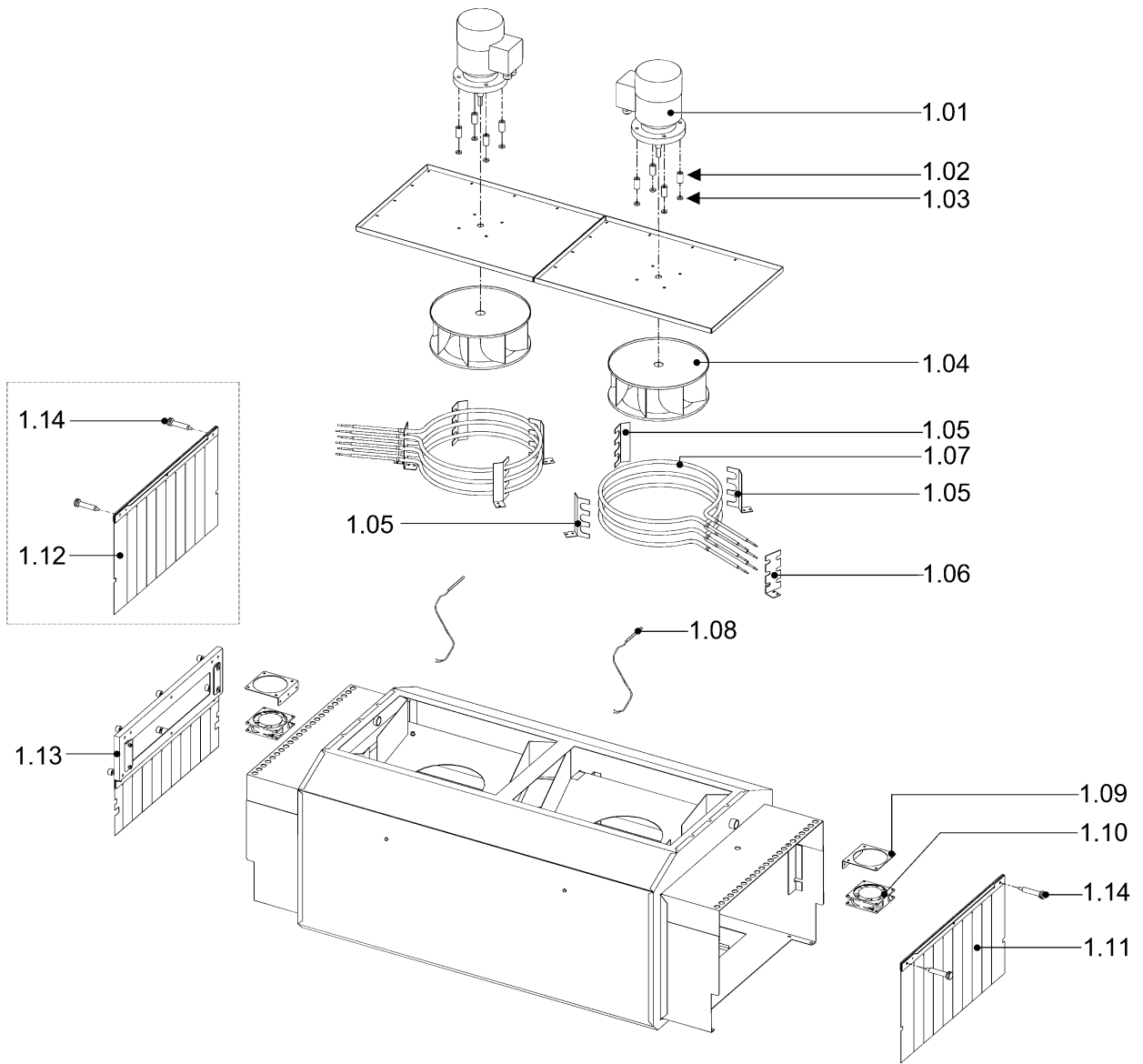
CAREFULLY READ THIS CATALOGUE BEFORE ORDERING ANY SPARE PART



DOC. N. FM112370
REV. 0
ED. 04.2023

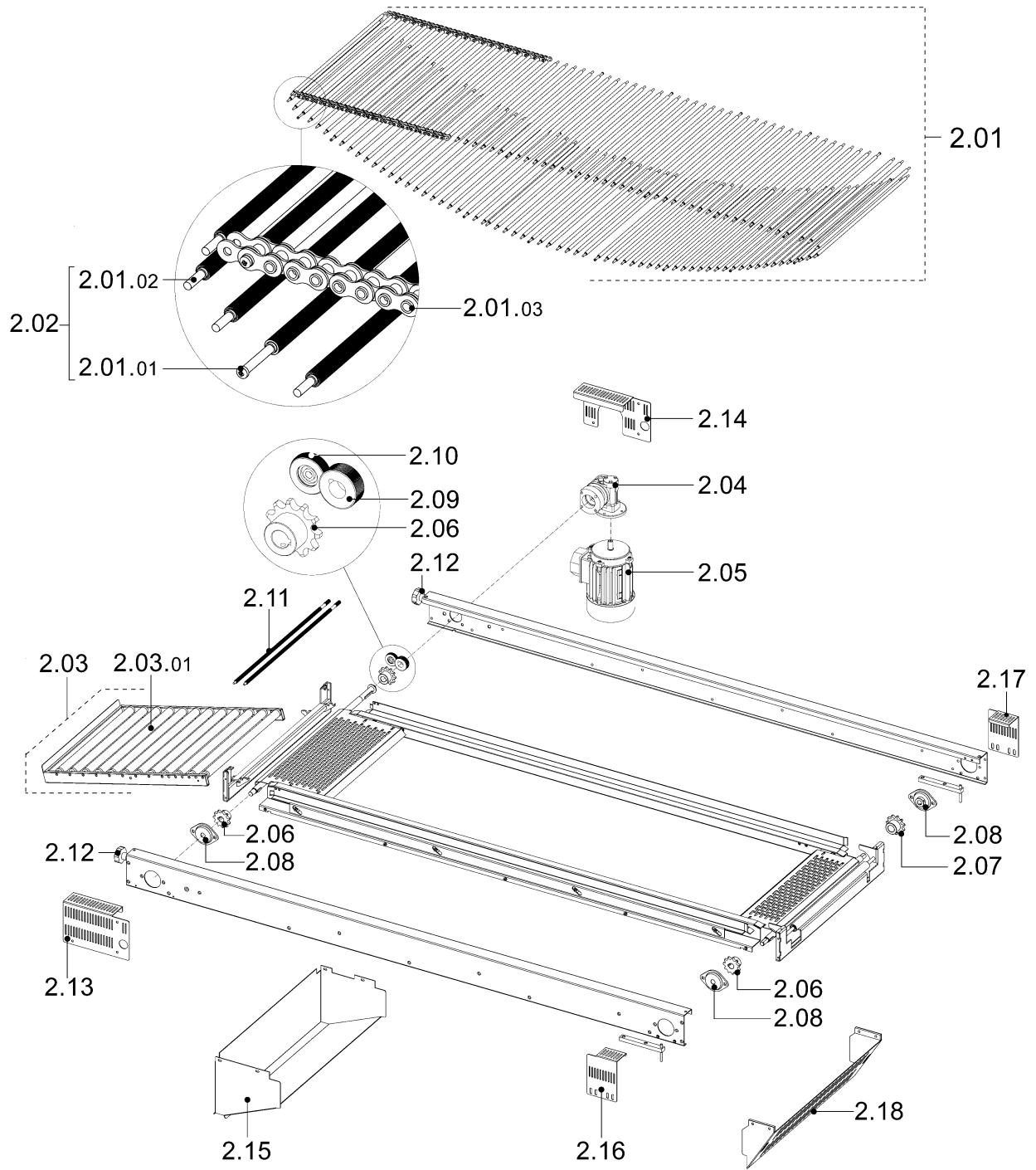
ITEMS DESCRIPTION	SCHEME 1
--------------------------	-----------------

Pos.	Code	Description
1.01	FE240070	Motor 3 Ph V230-400
1.02	FM160004	Spacer
1.03	FM160074	Insulating washer
1.04	FM830052	Fan
1.05	FM290255	Single heaters support
1.06	FM290249	Double heaters support
1.07	FE380010	2300W resistor
1.08	FE435004	Thermocouple
1.09	FM283510	Fan support square
1.10	FE260033	Fan
1.11	P0K00500	Inlet curtain pre-assembly
1.12	P0K00501	Outlet curtain pre-assembly
1.13	P0K00370	Outlet curtain pre-assembly
1.14	FM150105	Curtain fastening knob



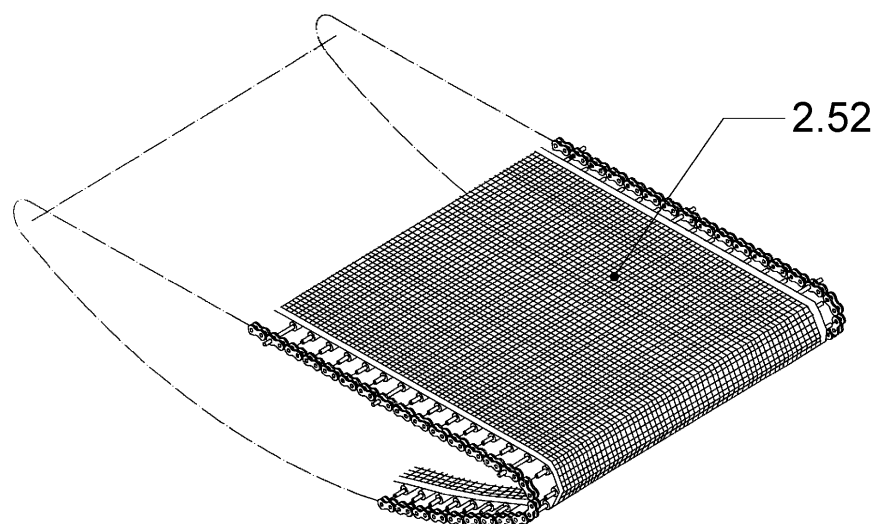
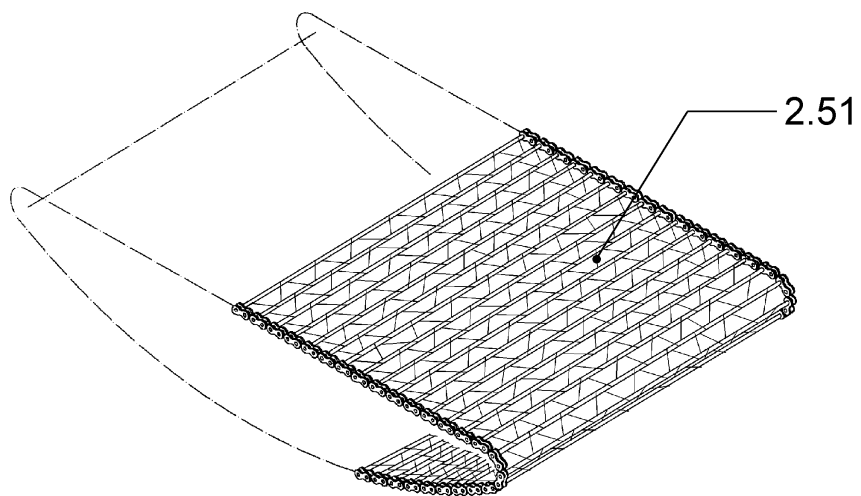
ITEMS DESCRIPTION	SCHEME 2
--------------------------	-----------------

Pos.	Code	Description
2.01	CT250003	Standard complete conveyor belt
2.01.01	AS250052	Chain fastening roll
2.01.02	AS250047	Roll for chain
2.01.03	FM100019	Chain with holed pins
2.02	KR250023	Rollers kit (110+16)
2.03	RU020000	Roller table 40x50 (standard)
	RU020001	Roller table 40x100 (optional)
2.03.01	FM710305	Idle roll
2.04	FM760022	Reduction gear RMI 28 F 1:20 56B14
2.05	FE240087	Motor H63 HP 0,25 B14
2.06	KR090023	Pinion kit
2.07	KR090011	Idle pinion kit
2.08	FM610710	SBPFL support
2.09	FM250027	Belt motor roll
2.10	KR090025	Roll with gaskets kit
2.11	AS250026	Outfeed roll
2.12	FM150102	Handwheel
2.13	FM095536	Left guard colour black
2.14	FM095534	Right guard colour black
2.15	FM095475	Outlet case colour black
2.16	FM095562	Left guard colour black
2.17	FM095532	Right guard colour black
2.18	FM095451	Inlet case colour black



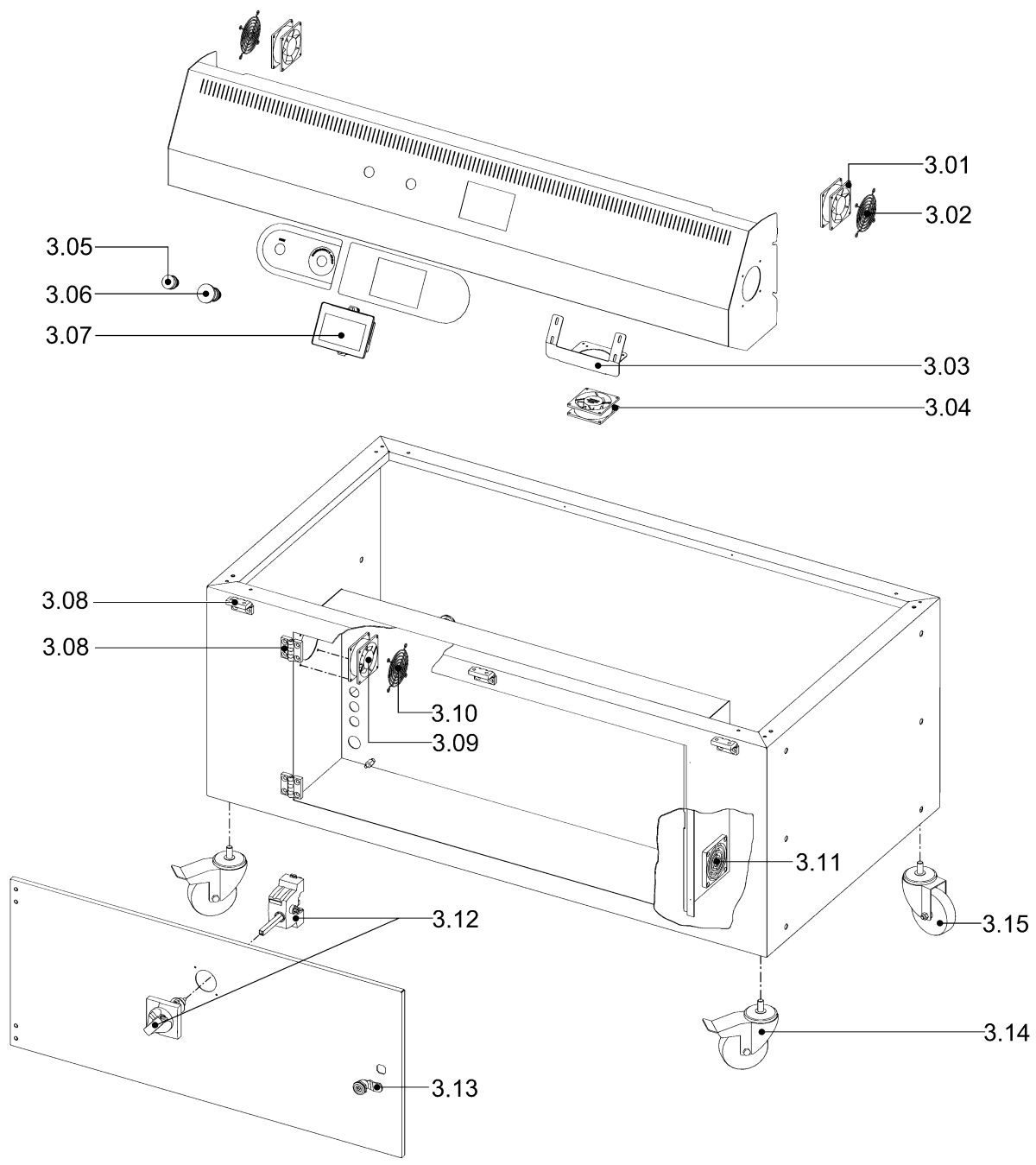
ITEMS DESCRIPTION (OPTIONAL)	SCHEME 2.1
-------------------------------------	-------------------

Pos.	Code	Description
2.51	NT250003	Complete stainless steel conveyor belt (optional)
2.52	FM710015	Teflon conveyor belt (optional)



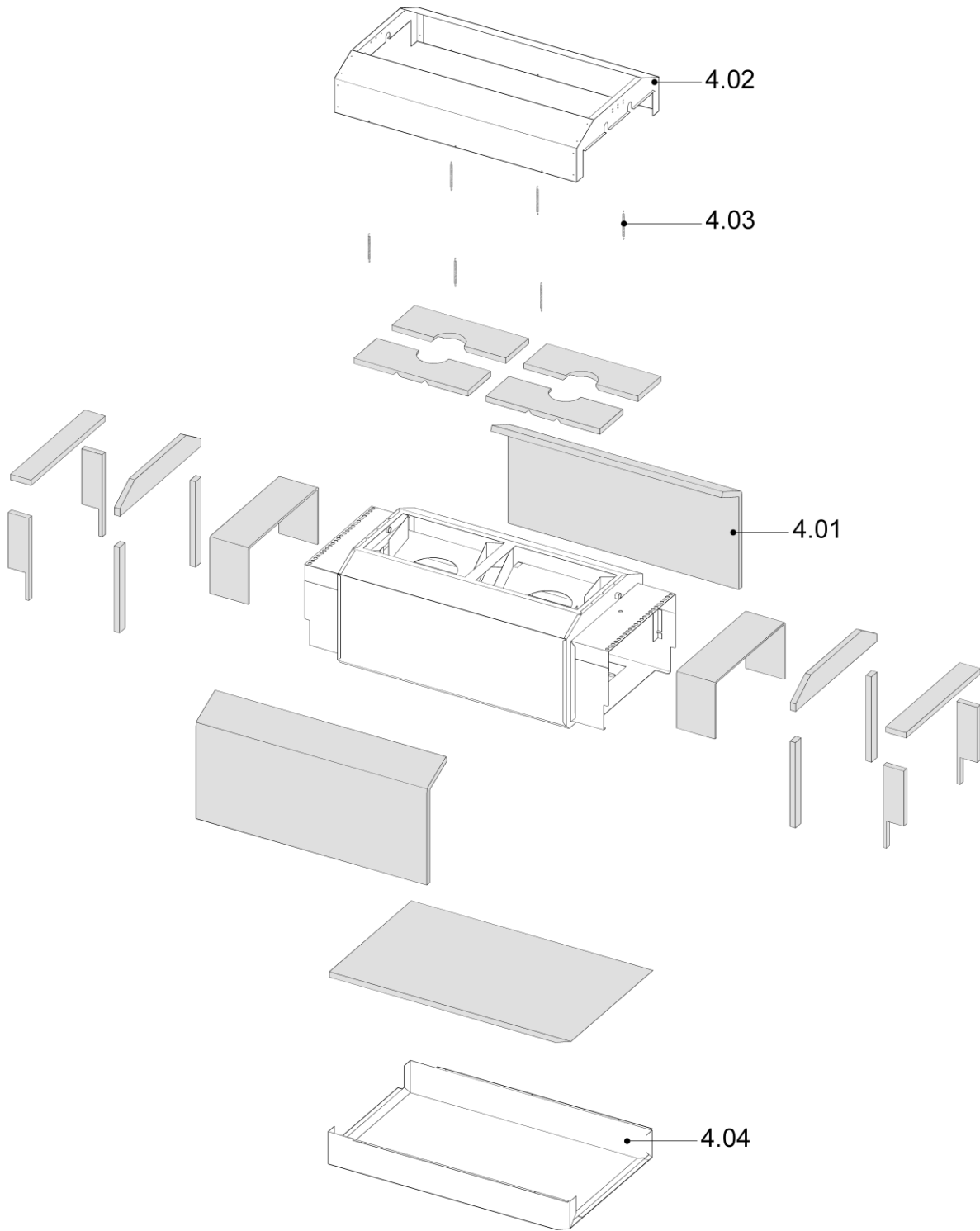
ITEMS DESCRIPTION**SCHEME 3**

Pos.	Code	Description
3.01	FE260036	Fan
3.02	FM095963	Protection grid
3.03	FM092111	Support fan
3.04	FE260036	Fan
3.05	FE340004	Reset pushbutton
3.06	FE340005	Emergency pushbutton
3.07	KR250013	Touch screen
3.08	FM510084	Hinge
3.09	FE260036	Fan
3.10	FM095963	Protection grid
3.11	FM720013	Filter
3.12	FE190150	Black handle
3.13	FM510081	Lever latch
3.14	FM770512	Wheel Ø100 with brake
3.15	FM770511	Wheel Ø100



ITEMS DESCRIPTION	SCHEME 4
--------------------------	-----------------

Pos.	Code	Description
4.01	FM195152	Insulating panels kit
4.02	FM095653	Upper insulation case
4.03	FM170119	Spring
4.04	FM095652	Lower insulation case



ITEMS DESCRIPTION

SCHEME 5.2

CE250B17: valid from serial number 2340487

Electrical system with "Control Techniques" inverter

Pos.	Code	Description
F1	FE290400	Fuse 10.3X38 AM 1A (400V)
F2	FE290405	Fuse 10.3X38 AM 10A (400V)
F3	FE290405	Fuse 10.3X38 AM 10A (400V)
F4	FE290454	Fuse 10.3X38 gG 6A (400V)
F5	FE290454	Fuse 10.3X38 gG 6A (400V)
F6	FE290121	Fuse 5X20 T 2A (400V)
F7	FE290121	Fuse 5X20 T 2A (400V)
F8	FE290121	Fuse 5X20 T 2A (400V)
K0	KR250014	PLC M221 (TM221CE24T)
	KR250019	PLC M221 (TM221CE40T)
K1	FE122024	Cartridge M221 - 2 analog voltage outputs
K2	FE122127	4 analogic inputs temperature expansion
KA0	FE370100	Safety module
KA1	FE370020	Relay 12A 24VDC
KA2	FE370020	Relay 12A 24VDC
KA3	FE370020	Relay 12A 24VDC
Q1	no code	Automatic switch
QM1	FE110307	Contacteur LC1-D09BL
QM2	FE110307	Contacteur LC1-D09BL
QM0A	FE110308	Contacteur LC1-D18BL
QM0B	FE110308	Contacteur LC1-D18BL
T1	FE122023	100-500V 24V 3A 72W Infeed
TS1	KR250027 (FE121062)	Belt inverter (0,37kW)
TS2	KR250028 (FE121063)	Fans motors inverter (0,55kW)

CE250B17: valid from serial number 2340487

Electrical system with "Control Techniques" inverter

